

YAMAHA SINGLE KEYBOARD ORGAN  
with Playcard System

# CN-1000



*Owner's Manual*

*Bedienungsanleitung*

*Manuel de L'utilisateur*

*Manual del Propietario*

---

**T**hank you for purchasing a Yamaha CN-1000. It's a revolutionary product which lets you enjoy playing and learning keyboard music in a variety of ways. You can quickly learn melodies and chords with the Playcard system. And with the Auto Bass Chord system you can start playing professional-like accompaniments — using just one finger — today! You can also use your CN-1000 as a 49-note single keyboard organ — an organ which gives you multiple choices of instrument voices and rhythm accompaniments, too. CN-1000, with its broad range of great features, introduces

you to a new world of musical fun and pleasure. To be sure you get maximum satisfaction, we suggest you follow the steps in this manual carefully while actually playing the instrument.

---

**W**ir bedanken uns für den Kauf der einmanualigen Yamaha CN-1000. Es handelt sich hier um ein vollkommen neues Produkt, das mit einer Vielfalt von interessanten Spielmöglichkeiten ausgestattet ist und mit dem Sie mühelos lernen, auf einer Tastatur zu spielen. Zum schnellen Erlernen von Melodien ist ein "Playcard"-System vorgesehen, und dank der Baßakkord-Automatik können Sie gleich vom ersten Tag an mit einem einzigen Finger professionell klingende Musik spielen — sogar mit Begleitung! Weiterhin können Sie das CN-1000 auch als 49-Töne-Tastatur verwenden — mit

verschiedenen Instrumentalstimmen und mit Rhythmus-Begleitung.

Sie werden sicher bald an den vielen Sonderfunktionen Freude finden. Um alle gebotenen Spielmöglichkeiten ausschöpfen zu können, gehen Sie zunächst die Anleitung sorgfältig durch. Probieren Sie dabei gleich alle Punkte direkt aus, um sich mit dem Instrument vertraut zu machen.

---

**T**out d'abord merci pour la confiance que vous témoignez à Yamaha pour son orgue à clavier unique CN-1000. Il s'agit d'un modèle révolutionnaire qui vous permet d'apprécier la musique et d'en jouer, au clavier, de bien des manières.

Vous pouvez — dès aujourd'hui — apprendre rapidement des mélodies grâce au Système de carte musicale "Playcard". Quant au Système Basses/Accords Automatique, il vous permet — sur la pression d'un seul doigt — d'exécuter des accompagnements professionnels. Enfin, vous pouvez

utiliser toutes les ressources de votre CN-1000 comme orgue à clavier unique à 49 notes offrant un choix étendu de sonorités d'instruments et d'accompagnements rythmés.

Le CN-1000 — grâce à sa riche gamme de possibilités — vous ouvre un champ étendu de divertissements musicaux, en fait un nouveau monde fertile en sensations musicales. Afin d'utiliser pleinement les ressources de votre CN-1000, nous vous conseillons vivement de suivre scrupuleusement les instructions du Manuel, au cours de l'utilisation de votre instrument.

---

**G**racias por haber adquirido un CN-1000 de Yamaha. Es un producto revolucionario que le permite disfrutar tocando y aprendiendo música de teclado en una diversidad de maneras. Puede aprender melodías rápidamente con el sistema Playcard (tarjetas musicales), y con el sistema de Acorde y Bajo Automático puede empezar a tocar con acompañamiento profesionalizado — utilizando un solo dedo — ¡Hoy mismo! También puede utilizar su CN-1000 como teclado de 49 notas — un teclado que le ofrece múltiples selecciones de voces instrumentales y acompañamientos de ritmo también.

El CN-1000, con su amplia gama de posibilidades, le introduce a un nuevo mundo de placer y diversión musical. Para sacar el máximo provecho, le sugerimos que siga las indicaciones del Manual de Instrucciones, cuando toque el instrumento.

---

**ORCHESTRA PAGE (5)**

**RHYTHM PAGE (9)**

Volume

Volume

Voice Selectors

Tempo

Sustain

Start & Syncro Start

Orchestra On/Off

Selectors

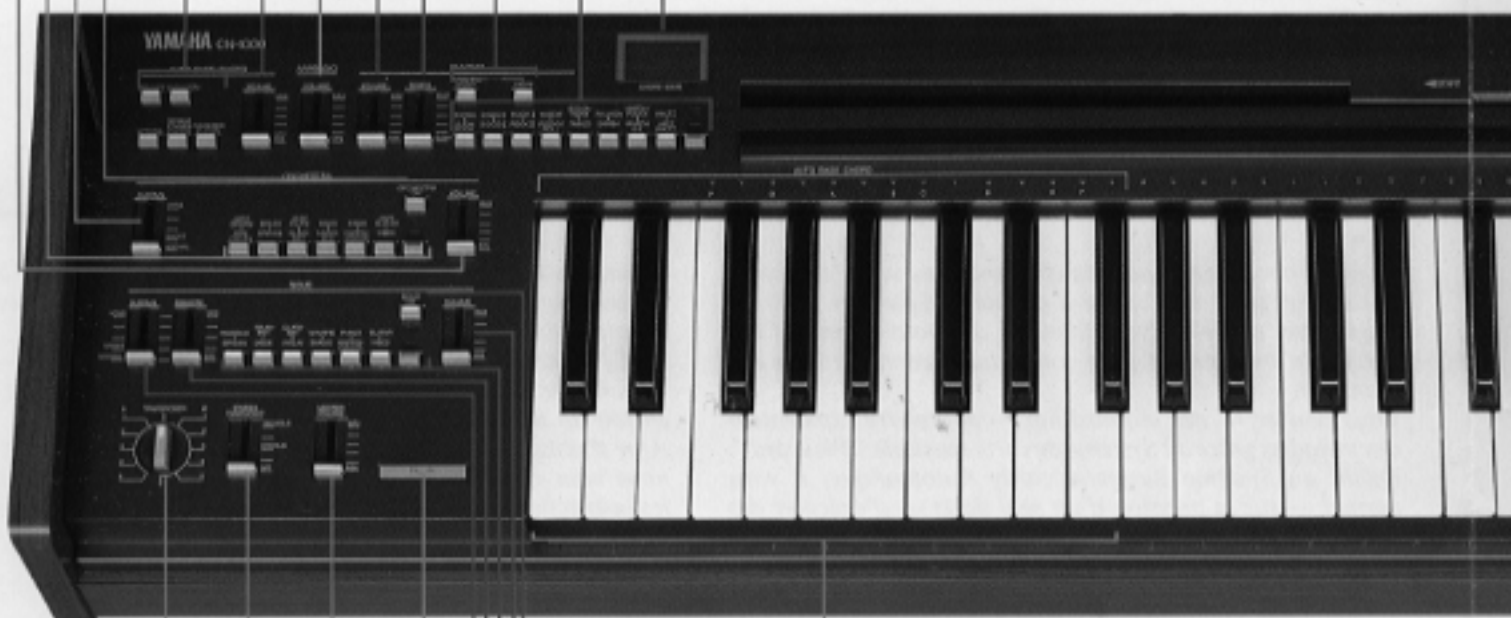
**Arpeggio PAGE (14)**

**AUTO BASS  
CHORD PAGE (11)**

**Chord Name Display PAGE (2)**

Selectors

Volume



Transposer

**Stereo Symphonic  
PAGE (6)**

Master Volume

Fill In

Solo On/Off

Volume

Voice Selectors

Celeste

Sustain

**SOLO PAGE (7)**

Auto Bass Chord Key Section

**PLAYCARD SYSTEM PAGE (1)**

- Preset Balance Cancel
- Instrumental Sequencer
- Phrase Repeat
- Stop
- Chord Cancel
- Chord Lesson
- Melody Cancel
- Sing Along
- Auto Play
- Free Tempo



Power Switch

**CONTENTS**

Page

<input type="checkbox"/> <i>Playcard</i>	
Playcard System .....	1
<input type="checkbox"/> <i>How To Use All Other Features</i>	
Orchestra Section .....	5
Solo Section .....	7
Rhythm Section .....	9
Auto Bass Chord .....	11
Useful Information About Using the CN-1000 .....	15
<input type="checkbox"/> <i>Assembly Procedure</i> .....	17
Specifications .....	24

**INHALSVERZEICHNIS**

Seite

<input type="checkbox"/> <i>Playcard</i>	
"Playcard"-System .....	1
<input type="checkbox"/> <i>Verwendung der anderen Funktionen</i>	
Orchestra (Orchester)-Teil .....	5
Solo-Teil .....	7
Rhythm (Rhythmus)-Teil .....	9
Auto Bass Chord (Baßakkord-Automatik) .....	11
Praktische Informationen über den Gebrauch Ihrer CN-1000 .....	15
<input type="checkbox"/> <i>Aufstellungsanleitung</i> .....	17
Technische Daten .....	24

**TABLE DES MATIERES**

Page

<input type="checkbox"/> <i>Playcard (Carte musicale)</i>	
Système De Carte Musicale .....	1
<input type="checkbox"/> <i>Exploitation des autres caractéristiques</i>	
Section Orchestra (Orchestrale) .....	5
Section Solo .....	7
Section Rhythm (Rythme) .....	9
Auto Bass Chord (Basses/Accords Automatiques) ..	11
Conseils pratiques à l'usage de l'CN-1000 .....	15
<input type="checkbox"/> <i>Manuel de Montage</i> .....	17
Caractéristiques techniques .....	24

**INDICE**

Página

<input type="checkbox"/> <i>Playcard (Tarjetas)</i>	
Sistema De Tarjetas .....	1
<input type="checkbox"/> <i>Utilización de las demás funciones</i>	
Sección De Orchestra (Orquesta) .....	5
Sección De Solo .....	7
Sección De Rhythm (ritmo) .....	9
Auto Bass Chord (Acorde y Bajo Automático) .....	11
Información útil para el manejo del CN-1000 .....	15
<input type="checkbox"/> <i>Manual de Montaje</i> .....	17
Especificaciones .....	24

## Preliminary Settings for Sound Production

First of all, make sure that the plug is firmly connected to a wall outlet, and then —

## Voreinstellungen für Tonwiedergabe

Überzeugen Sie sich zuerst davon, ob der Netzstecker fest in Steckdose steckt, —

## Réglages préliminaires à la production sonore

En premier lieu, s'assurer que la fiche est fermement insérée dans une prise secteur.

## Ajustes preliminares

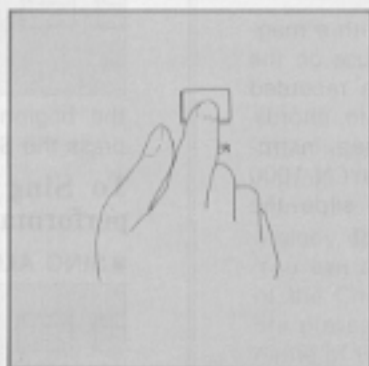
En primer lugar cerciórese de enchufar seguramente el cable de alimentación a una toma de la red, y —

### 1) Turn on the POWER.

The power indicator lamp will light up.

### 1) Schalten Sie dann den Netzschalter ein.

Die Anzeigelampe leuchtet nun auf.



### 1) Mettre ensuite l'instrument sous tension.

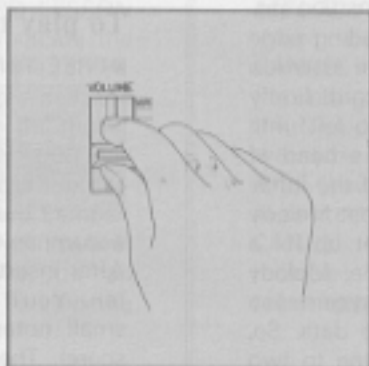
Le voyant indicateur s'allume.

### 1) Ponga el interruptor en ON.

Se encenderá el indicador de alimentación.

### 2) Slide the MASTER VOLUME control to the desired position.

### 2) Schieben Sie den Hauptlautstärke-regler (MASTER VOLUME) auf die gewünschte Stellung.



### 2) Faire glisser le réglage de Volume Principal (MASTER VOLUME) sur la position de son choix.

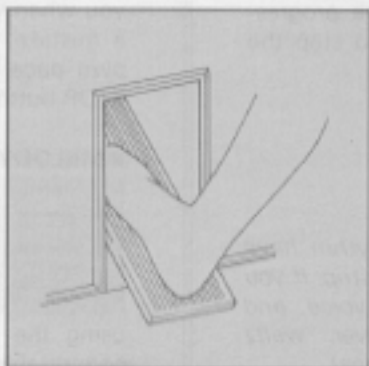
### 2) Deslice el control de volumen maestro (MASTER VOLUME) hasta la posición deseada.

### 3) Depress the Expression Pedal.

The Expression Pedal is used to control volume during performance.

### 3) Drücken Sie den Fußschweller herunter.

Der Fußschweller dient dazu, die Lautstärke während der Darbietung zu regeln.



### 3) Enfoncer la pédale d'Expression.

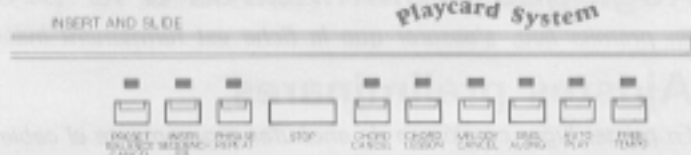
La pédale d'Expression permet de régler l'intensité du volume pendant une performance musicale.

### 3) Pise el pedal de volumen global.

El pedal de volumen global sirve para regular el volumen durante las actuaciones.

# Playcard System

In addition to its full functions of expression, the CN-1000 provides the Playcard System which enables you to listen to and sing along with a piece of music, or to practice playing the melody or accompanying the chords all by yourself.



## For Automatic playing

### ■ Playcards

Each Playcard has a music score together with a magnetic strip on one side, and instructions for use on the other. The magnetic strip has musical data recorded on it. This data comprises a melody, obbligato, chords, rhythm accompaniment, drum fill-ins, bass line, instrument voices, and program instructions. The CN-1000 memorizes all this information when you slide the Playcard across the instrument's reading head.

### ■ Insert a Playcard



Select a Playcard, remove it from the protective envelope, and place it in groove so that its leading edge becomes level with the arrow designating the insertion position (see figure). Then slide the Playcard firmly along the groove in one action from right to left until it reaches the end of the groove. When the head of the CN-1000, located in the groove, has read the information on the magnetic strip correctly, the last Melody Lamp on the right of the keyboard will light up for a few seconds. Repeat the procedure if the Melody Lamp does not illuminate. Sliding the Playcard too slowly will cause the head not to read the data. So, the sliding action should be performed in one to two seconds. Try several times to familiarize yourself with the correct speed.

When reading of the Playcard is completed, your CN-1000 will immediately start playing the Playcard music automatically. At the same time, the Melody and the Chord Lamps will light up to show you the progression of the melody and the chord notes. To stop the music at any time, press the STOP button.



- ★ The suggested instrument voice and rhythm have been preset on the Playcard's magnetic strip. If you wish, you can change the melody voice and rhythm during a performance. However, waltz music should not be switched to a 4/4 beat.
- ★ Once the CN-1000 has memorized the Playcard data, you can remove the Playcard if you wish; for safety's sake, return it to its protective envelope.

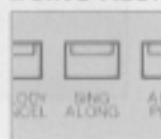
### ■ AUTO PLAY



When the Playcard music has finished or has been interrupted by pressing the STOP button midway and you wish to play it again, press the AUTO PLAY button. The music will be played from the beginning. To stop the music at any time, just press the STOP button.

### To Sing (Or Perform) with the Playcard performance in the background

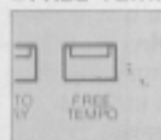
### ■ SING ALONG



After inserting a Playcard, press the SING ALONG button. The Playcard music will be reproduced with the volume of the melody suppressed. This feature is convenient when you wish to sing the song with the Playcard music in the background or to play the melody with another instrument. To stop the music at any time, press the STOP button.

### To play the melody by yourself

### ■ FREE TEMPO



The FREE TEMPO function helps you learn melodies at your own playing speed. There's no need to search hurriedly for the correct keys to keep up with the accompaniment, because the accompaniment will always wait for you to lead it.

After inserting a Playcard, press the FREE TEMPO button. You'll hear the introductory music phrase (the small notes at the beginning of the Playcard music score). Then the Melody Lamp corresponding to the first note of the melody (large notes on the music score) will light up. The CN-1000 will wait until you start playing the melodies. As you speed up or slow down your melody playing, the accompaniment will stay right with you. Because the CN-1000 waits for you when you can't find the next note to play or make a mistake, you can learn the correct melody at your own pace. To stop the music at any time, press the STOP button.

### ■ MELODY CANCEL



Press the MELODY CANCEL button and you will hear only the accompaniment. You can then play the melody, following the sequence of the Melody Lamps. If the tempo is too fast, slow it down using the TEMPO control so that you can practice comfortably. As with the automatic playing, you can select the instrument and rhythm of your choice. To stop the music at any time, press the STOP button.

- ★ When the **FREE TEMPO** or **MELODY CANCEL** button is pressed, the melody will be produced in both **Solo** and **Orchestra** sounds.

## To play the chord by yourself

### ■ CHORD LESSON



By using the **CHORD LESSON** function, you can practice playing chords. The CN-1000 will always stop playing the music and wait for you till you press the correct chord keys. So, you can take time in searching for the right chord.

After inserting a Playcard, press the **CHORD LESSON** button. The Chord Lamps will light up to indicate the positions of the notes which make up the chord. When the correct keys for the chord are pressed, the play will start until another chord is used in the music. When it encounters a new chord, the CN-1000 will stop the play again and wait for you to press the correct keys for the chord indicated by the Chord Lamps. As the CN-1000 will stop playing when you cannot find the next chord to play or make a mistake, you can learn the correct chord at your own pace. To stop the music at any time, press the **STOP** button.

- ★ Once it starts playing the music with a certain chord, the CN-1000 will keep playing in a normal speed until it reaches the next chord.

### CHORD NAME DISPLAY



**CHORD NAME DISPLAY** indicates the name of the chord you play to help you learn the chord names.

- ★ The name of a chord whose root is one of the black keys of the keyboard is displayed by  $D^{\flat}$ ,  $E^{\flat}$ ,  $F^{\sharp}$ ,  $A^{\flat}$ , and  $B^{\flat}$  (in other words,  $C^{\sharp}$ ,  $D^{\sharp}$ ,  $G^{\flat}$ ,  $G^{\sharp}$ , and  $A^{\sharp}$  are not used).
- ★ Even if one or more keys besides the correct keys indicated by the Chord Lamps are pressed, the play will start as long as the correct keys are pressed.

### ■ CHORD CANCEL



After inserting a Playcard, press the **CHORD CANCEL** button. The chord accompaniment will be excluded from the Playcard music performance, and only the melody, obbligato, rhythm and bass will be reproduced. You can then play the chords, following the sequence of the Chord Lamp indication. When the correct keys are pressed, **CHORD NAME DISPLAY** will indicate the name of the chord played.

Unlike the case under the **CHORD LESSON** mode, the music will continue to be played under this mode. Therefore, adjust the **TEMPO** control so that you can practice comfortably.

### MELODY CANCEL and CHORD CANCEL

When both the **MELODY CANCEL** and **CHORD CANCEL** buttons are pressed at the same time, only the obbligato, rhythm and bass will be reproduced, and the Melody and Chord Lamps will light up to indicate the notes for the melody and the chord.

After you have learned the melodies and chords separately using the **MELODY CANCEL** and **CHORD CANCEL**, then go ahead and practice how to play the melodies and chords together with both hands by pressing both buttons simultaneously.



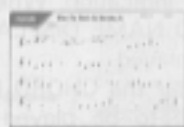
## Learning through repetition

### ■ PHRASE REPEAT

The best way to learn playing is to practice repeatedly, and the CN-1000 has a very convenient feature for this purpose.

During the Playcard performance, a phrase, phrases, or an entire music selection can be repeatedly produced using the PHRASE REPEAT function.

1) On the score attached with a Playcard, each phrase is indicated with a number. So, please choose the phrase or phrases you wish to repeat.



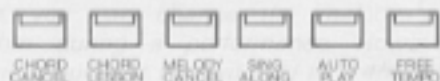
2) The keys with the numbers 1~20 are located just below the keyboard of the CN-1000.

After inserting a Playcard, press the first and the last number of the portion which you wish to repeat while depressing the PHRASE REPEAT button. For example, if you wish to repeat phrase 3 through phrase 8, press keys 3 and 8 while depressing the PHRASE REPEAT button. When you wish to repeat the entire selection, press the rightmost key with the (+) mark, while depressing the PHRASE REPEAT button. (When the (+) key is pressed, the introduction of the music will not be repeated.)



3) Press one of the play buttons FREE TEMPO, AUTO PLAY, SING ALONG, MELODY CANCEL, CHORD LESSON, and CHORD CANCEL which you have selected. The play will start.

To cancel the PHRASE REPEAT, first press the STOP button to interrupt the play, and then press the PHRASE REPEAT button once again. The PHRASE REPEAT lamp will go out and the PHRASE REPEAT will be cancelled.



## To Perform playcard music with the registration of your choice

### ■ INSTRUMENTAL SEQUENCER

By using the INSTRUMENTAL SEQUENCER function, the tones of melody or obbligato which have been preset in the data on a Playcard can be changed, phrase by phrase, into the tones of your choice.

- 1) After inserting a Playcard, while depressing the INSTRUMENTAL SEQUENCER button, press a select button or buttons of your choice for the ORCHESTRA voice (controlling the tone for obbligato), and for the SOLO voice (controlling the tone for melody).
- 2) While depressing the INSTRUMENTAL SEQUENCER button, press the key with the number of the phrase where you wish to change the tone. The tone of the subsequent phrases will be altered.



- 3) To change tones at several phrases, repeat steps 1) and 2).

At this time, be sure not to let your finger go off from the INSTRUMENTAL SEQUENCER button. If you release your finger from the button and then press it again, all the tones which have been set will be cancelled.

- 4) After your setting is completed, press one of the AUTO PLAY, SING ALONG, FREE TEMPO, MELODY CANCEL, CHORD LESSON, and CHORD CANCEL buttons which you have selected. The play will start.

When you wish to return to the original tones preset in the card, press the INSTRUMENTAL SEQUENCER button again. The INSTRUMENTAL SEQUENCER lamp will go out and the original tones will be restored:



# Orchestra Section Starting to play

In the Orchestra Section, you can choose from 13 different voices: JAZZ ORGAN, PIPE ORGAN, BRASS, STRING, JAZZ FLUTE, CLARINET, REED MUSIC, BOX PIANO, HARP/CHORD, JAZZ GUITAR and VIOLS.

## ■ PRESET BALANCE CANCEL

The volume balance and tempo of the melody, obbligato, and rhythm for the Playcard performance have been preset in the card, regardless of the positions where you may set the VOLUME controls or the TEMPO controls on the CN-1000. By using the PRESET BALANCE CANCEL button, however, you can change the volume balance and tempo setting to the actual positions of the levers, or return to the original preset setting.

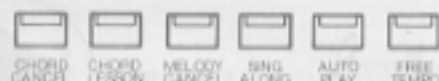
1) After inserting a Playcard, press the PRESET BALANCE CANCEL button.

The PRESET BALANCE CANCEL lamp will light up, and the volume balance and tempo can be controlled with the levers on the CN-1000 organ. Adjust the VOLUME and TEMPO controls for the ORCHESTRA tones (controlling the obbligato tones), SOLO tones (controlling the melody tones), and RHYTHM to suit the balance of your choice.



2) Press one of the play buttons which you have selected.

The Playcard music will be produced with the balance set with the levers on the organ.



3) When the PRESET BALANCE CANCEL button is pressed again, the PRESET BALANCE CANCEL lamp will go off, and the music will be played with the original balance preset in the card.

★ If the VOLUME control lever or TEMPO control lever is moved during the Playcard performance, the PRESET BALANCE CANCEL lamp will light up and the balance will be shifted from the preset setting to the setting on the organ, as far as the portion governed by the lever which have been moved is concerned.

## ■ TRANSPOSER

With the TRANSPOSER function, you can adjust the pitch of the CN-1000 to suit either a singing voice — so anyone can sing along as you play — or an instrument such as a B<sup>b</sup> trumpet, clarinet or saxophone. Turn the dial to the right to increase the pitch up to half an octave, and to the left to decrease to half an octave.



## ■ ERASING THE CN-1000's PLAYCARD MEMORY

The memory will be erased whenever you switch off the CN-1000. Also, if you change from one Playcard to another the CN-1000 automatically wipes the memory clean and records the fresh data.

# How to use all other features

Various tones and rhythms can be freely selected by simply depressing buttons. With the **AUTO BASS CHORD** function, accompaniments of your music can be performed with just a single finger. Now, play the CN-1000 all by yourself without using a Playcard.

## Orchestra Section Starting to play

In the Orchestra Section, you can choose from 12 different voices: **JAZZ ORGAN, PIPE ORGAN, BRASS, STRING, JAZZ FLUTE, CLARINET, REED, MUSIC BOX, PIANO, HARPISCHORD, JAZZ GUITAR** and **VIBES**.

- 1) First depress the ORCHESTRA ON/OFF selector.

ORCHESTRA  
ON

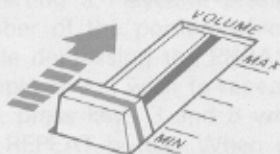


- 2) Press the selector corresponding to the instrument voice you want to hear.

When the selector with the red tab is up, you can select voices in the top row; when it is down, you can select voices in the bottom row.



- 3) Adjust the volume level by sliding the ORCHESTRA VOLUME control.



- 4) Press a key on the keyboard.



You will hear the instrument voice you have selected. Try playing a simple melody which suits the voice.

- ★ Even if the ORCHESTRA ON/OFF Selector is in the "up" position, the ORCHESTRA voice can be heard when the SOLO ON/OFF selector is not depressed.
- ★ When two or more voice selectors are pressed simultaneously, the right-hand selector always has priority.
- ★ When no selector is depressed, the JAZZ ORGAN voice will be automatically selected.
- ★ Be sure to press the NORMAL selector in the AUTO BASS CHORD section. If the SINGLE FINGER CHORD or FINGERED CHORD selector is depressed, the keys in the Auto Bass Chord key section cannot be used for playing melodies.

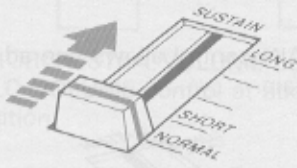
# Advanced class: Obtaining more voice variety for a more accomplished performance

Here's how you can enjoy an ensemble of voices that are more varied and independent of the orchestra. In addition to 12 solo voices (PIANO, HARP, GUITAR, BASS, DRUMS, TRUMPET, TROMBONE, CLARINET, VIOLIN, VIOLA, CELLO, CONTRABASS) and 12 orchestra voices (PIPE ORGAN, STRING, WOODWIND, BRASS, REED, HORN, GUITAR, BASS, DRUMS, TRUMPET, TROMBONE, CLARINET, VIOLIN, VIOLA, CELLO, CONTRABASS).

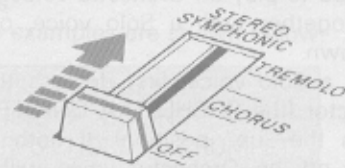


## ■ Sustain

The Sustain function gives the notes a natural or gradual fade-out after the keys have been released. A Sustain effect can be obtained by sliding the SUSTAIN control.



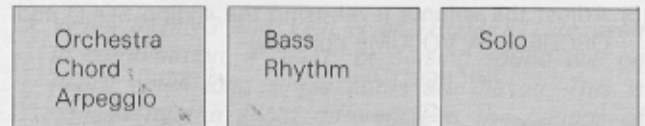
## ■ Stereo Symphonic



The Stereo Symphonic function produces an orchestra-like presence of sound by separating the sound stereophonically to the speakers.

When the STEREO SYMPHONIC control is set to the OFF position, no stereophonic effect will be produced. As you slide the lever, the sound will be separated to the left and right; at the CHORUS position the sound will be expanded and have a majestic effect; at the TREMOLLO position the sound will swell and have an effect as if obtained by rotary speakers.

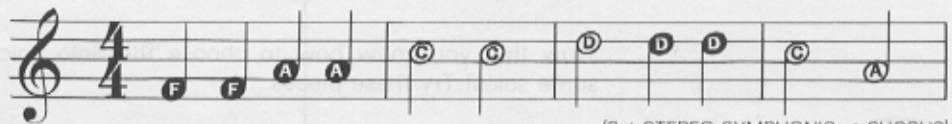
The voices are separated into three distinct groups, as shown in the figure, when the STEREO SYMPHONIC control is set between the positions OFF and CHORUS.



Try playing the following melodies, changing the ORCHESTRA voice each time to suit the music.



PIPE ORGAN



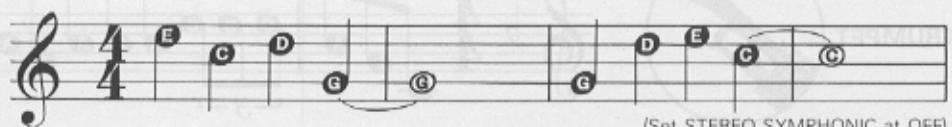
(Set STEREO SYMPHONIC at CHORUS)

CLARINET



(Set STEREO SYMPHONIC at OFF)

VIBES



(Set STEREO SYMPHONIC at OFF)

# Solo Section *Other features*

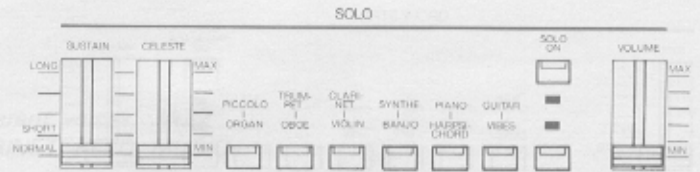
## Obtaining more voice variety

In addition to, and independent of the Orchestra voices described so far, there are 12 Solo voices (PICCOLO, ORGAN, TRUMPET, OBOE, CLARINET, VIOLIN, SYNTH, BANJO, PIANO, HARPSICHORD, GUITAR, VIBES).

# Orchestra Section

## Starting to play

In the Orchestra Section, you can choose from 12 different voices: ORGAN, PIPE ORGAN, BRASS, STRING, JAZZ FLUTE, CLARINET, SAXOPHONE, BOB WHISTLE, BOX, PIANO, HARPSICHORD, JAZZ GUITAR and VIBES.



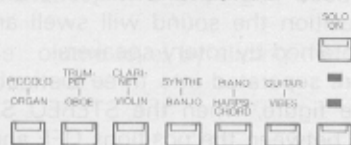
- 1) The ORCHESTRA ON/OFF and SOLO ON/OFF selectors enable you to play an Orchestra voice either on its own or together with a Solo voice, or a Solo voice on its own.

To play only a Solo voice, first depress the SOLO ON/OFF selector (the ORCHESTRA ON/OFF selector should be in the "up" position). If both of these selectors are off, an Orchestra voice will be produced.

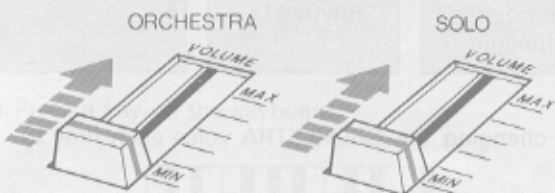


- 2) Select the desired voice by pressing one of the SOLO voice selectors.

Press the red button on the right-hand side to select a voice in the lower row.



- 3) Adjust the volume level using the sliding SOLO and ORCHESTRA VOLUME controls.

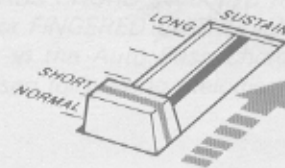


★ When two or more voice selectors are pressed simultaneously, the right-hand selector always has priority.

★ When no selector is depressed, the PICCOLO voice will be automatically selected.

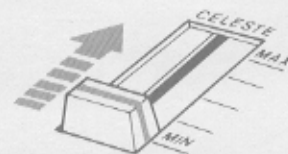
### ■ Sustain

The sliding SUSTAIN control allows fine adjustment of the degree of sustain.



### ■ Celeste

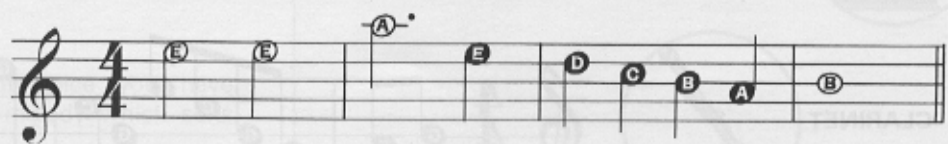
The CELESTE control enhances Solo voices by thickening them.



Now that you know how to choose the Solo voices, you are ready to play some solos! Try these pieces.



VIOLIN



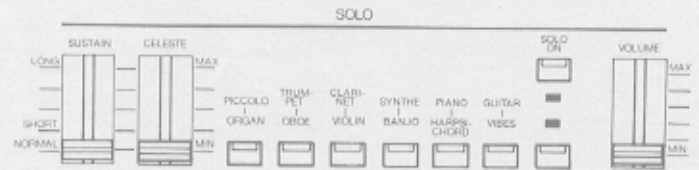
TRUMPET



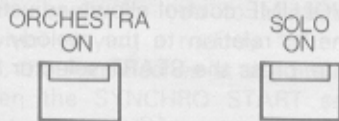
★ When two or more keys are pressed, only the highest one will produce a sound because the Solo voices are monophonic.

# Advanced class: Time for a more accomplished performance

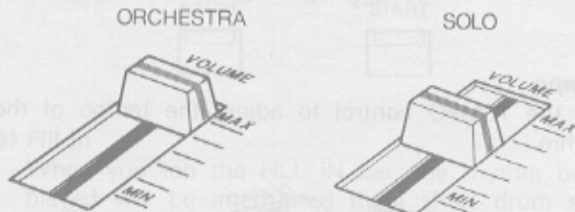
Here's how you can enjoy an ensemble performance featuring a combination of Solo and Orchestra voices.



- 1) Press the ORCHESTRA ON/OFF and SOLO ON/OFF selectors.



- 2) Set the ORCHESTRA VOLUME control at MAX and the SOLO VOLUME control at about the three-quarters position.



- 3) Decide on your combination of Orchestra and Solo voices.

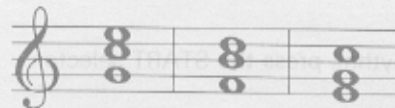
Some examples are shown below:

BRASS + TRUMPET  
STRING + VIOLIN  
HARPSICHORD + TRUMPET  
JAZZ ORGAN + GUITAR

- 4) Now, when a chord is played, a Solo voice is added to the highest note of the chord, resulting in a beautiful ensemble effect. Try playing a chord!

(Example)

(ORCHESTRA) STRING + (SOLO) VIOLIN



- ★ When STRING and VIOLIN or TRUMPET are used in combination, a "beat" or pulsing sound will be heard when long single notes are played. This is caused by the slight difference in the periods of the built-in String vibrato and the Violin vibrato. The sound becomes more beautiful when a chord is played.