

Waves Tune



Tuning Correction Plug-in for Vocals and Monophonic Sound Sources.

Software Users Guide

Introduction and Overview

Waves Tune is a software audio processor which allows for correction and manipulation of pitch in vocals and monophonic instruments. When Tune is inserted into a track of your audio sequencer or editor, it detects the signal's pitch and corrects to the nearest "clean" (in-tune) note. You can perform straightforward pitch clean-ups of a track, meticulous, nuanced touch-ups or complete manipulation of the melody, depending on your settings choices. Tune delivers excellent results in any form of music, even non-Western. Vocalists, producers and engineers facing complicated pitch-correction problems will benefit from the extraordinary quality and flexibility which Waves Tune offers.

Tune operates in perfect sync with the host timeline. It even takes charge of transport functions and region playback in host applications using ReWire technology by Propellerhead Software.

Tune offers natural sounding results while maintaining tight pitch correction by using formant corrected pitch shifting, combined with smoothing of note transitions as well as detection and editing of natural vibrato. Now, pitch shift with a synthetic sounding quantized effect is a choice rather than artifact.

A piano roll interface makes pitch curve editing familiar and comfortable, much like editing MIDI notes on a sequencer track. The pitch correction curve is a WYSIWYG (What You See Is what You Get) display. Changes to a selection's correction parameters can be viewed and auditioned in real time.

The process is streamlined and scalable, so that you can start from a purely default tuning scheme, then intervene after an initial scan to fine-tune sections needing further attention using the graphical and parametric correction tools. The controls are laid out in a way that makes the workflow clear, intuitive and efficient.

Please note!

- Tune must scan the audio before any correction will take place.
- Tune will display the intended correction during the scan but the sound correction will be bypassed until the scan is complete.
- When using ProTools, a Waves ReWire plug-in must be inserted in order to work in sync with the host transport and timeline.

Quick Start

INSERTING THE PLUG-IN

To get started, insert Tune onto your vocal track (or monophonic instrument track.) It is important that Tune precedes any effects processing on the source. We recommend that Tune is your first insert on the track.

Important note to ProTools users!

For proper operation of Tune you need to first insert the Waves ReWire plug-in into your session. Since the Waves ReWire plug-in has no audio output you should insert it into an auxiliary track so that it doesn't use a valuable voice.

Other host applications automatically launch the Waves ReWire device. ReWire technology is made by Propellerhead software.

Once inserted on a track, Tune is ready to scan an incoming signal. To keep memory usage reasonable and to offer you an extremely stable work environment, Tune can track pitches for a duration of ten consecutive minutes. If you need to scan more than ten minutes, you can clear the memory and use the Session Start Time dialogue to start a new scan at a later specific location.

Tune fully syncs with the host editor's time line, so that you will not have to leave the plug-in during your session. The following transport functions can be performed from within Tune:

1. Play start time.
2. Mark and playback loop regions.
3. Stop playback.
4. Start playback.
5. Set session start time.
6. Snap marker to host's grid option.

All this is done using ReWire technology licensed from Propellerhead Software.

Before you begin scanning your track, you can set global parameters and segmentation parameters such as Scale and Root. These can be modified later, but the modifications will affect only the selected notes. Reference Pitch should be adjusted before the scan, as any changes made after the scan will require clearing the graph and re-scanning.

SCANNING AND PITCH TRACKING

When you send audio through the plug-in, Tune will perform a scan and create the following displays:

- Waveform overview - displayed at the top.
- Detected pitch curve - displayed in orange on the piano roll pitch editing graph.
- Correction pitch curve - displayed in green on the piano roll pitch editing graph.
- Note segments - displayed as light white blocks around segments of the pitch correction curve.

An orange highlight on the top waveform overview indicates that Tune is scanning audio. During the scan, you will not hear any changes in the original audio.

There's no need to scan the entire track at once. Whenever Tune detects signal in a section where it hasn't yet established a pitch curve or where the pitch curve has been

cleared, it will automatically begin scanning. The sound output will remain uncorrected during the scan, but an orange highlight will appear to indicate that scanning is in progress.

PITCH CORRECTION AND PITCH CURVE EDITING

After a section is scanned and its correction curve and note segmentation are created, you can play back the section to apply and hear the correction. Audition through the track's assigned output. You can now select notes, sections or the entire piece and begin adjusting the correction curves.

Use the default Note tool to make a selection in the Tune graph. Select a single note by clicking on it or select multiple notes by clicking outside and dragging over the area you would like to select. The **Select All** button allows you to quickly select the entire curve with all its notes.

During the scan, Tune scans the track and applies default correction parameters for the construction of the correction graph. Choosing **Select All** is a convenient way to choose your own custom parameters rather than the automatic defaults. Once all segments are selected you can change the Segmentation and Correction Parameters. Increasing Note Tolerance in the Segmentation section, for example, will reduce the amount of false note transitions in places where the singer went off key momentarily.

When you are satisfied with the segmentation settings, you can increase or decrease any of the Correction Parameters for tighter or more relaxed correction. The results are animated and auditioned in real time. Once you are happy with the overall correction, you can make local adjustments to sections or individual notes using the Correction Parameters and Graphic Tools.

SO MUCH FOR THE QUICK START

The Tune interface is logical and intuitive, so with a bit of trial and error and a good pair of ears you should quickly be able to achieve quality results. But to get the most from the product, please read the rest of this manual.

The next chapter will take you through Tune's interface and describe each control. After that, in the chapter "Working with Tune," you'll find comprehensive instructions describing how to control Tune in greater detail.

Tune Interface Reference

The Tune Interface is divided into the following sections –

- Global Correction section
- Segmentation section
- Correction Parameters section
- Graphic Editing Tools section
- Vibrato section
- Main Pitch Editing Graph

GLOBAL CORRECTION SECTION:



The Global Correction section, the first section of the Tune work flow, offers four global tune parameters which are critical for pitch detection:

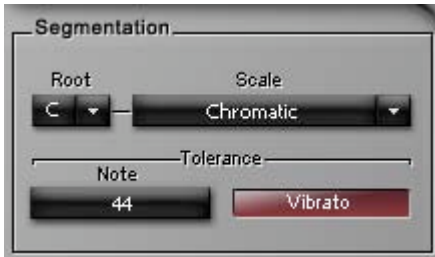
Reference Pitch - This is similar to the calibration adjustment on a standard guitar/instrument tuner. It allows adjusting the overall tuning offset for any scale. Reference Pitch should be adjusted before the scan. Changing Reference Pitch later will require clearing the graph and re-scanning.
Default: A = 440hz; Range: +/- 2 octaves (220hz-880hz.)

Global Pitch Shift - Here you will define the global pitch shift which you want to perform on all scanned material. Global shift defines a constant shift in equal tempered semitones (half steps.)
Default = 0 ; +/- 12 half-steps (semitones.)

Formant Correction - The correction type can be set to Formant corrected or Non Formant corrected. For vocals we recommend formant correction to avoid unnatural pitch shifts. You may change this setting at any time and the note shift method will adjust accordingly.

Range - This parameter will narrow Tune's detection area to a certain range (bass, baritone, tenor, soprano etc.) making detection in that range more precise. You can change the range of detection simply by narrowing or enlarging the grayed out area on the Piano Roll. This is done by placing the mouse over the current range border until the pointer changes into a resize tool. Click-dragging will adjust the detection range boundary.

SEGMENTATION SECTION:



The Segmentation section allows you to select conditions by which Tune will segment the correction curve into notes. These conditions set the “rules” of the Correction Grid in determining whether or not a note is “legal.” This section has two main parts: Scale Selection and Tolerance Parameters.

Root and Scale (pop up menu items):

The Root pop-up defines the root note for the selected scale. The default scale is a 12 semitone (half-step) equal tempered chromatic scale. Since the notes in a scale will define the correction grid, a selected scale preset will adjust the number of notes, as well as the Note Status (legal vs. illegal.) The grid serves as a table of possible “correct to” pitch values which are designated according to the detected input pitch.

Default Scale: Chromatic.

Default Root: Grayed out - will become available when scale is changed.

Clicking on the **Edit Scale** button allows you to further change and manipulate the scale.

Tolerance:

The **Tolerance** control works between the detection and the assignment of target notes (segments.) It sets a couple of rules, making the target note hold to the current target unless the change lasts for more then the Tolerance time, or is steeper then a defined Slope. This allows marginal detunes and small “getaways” to maintain the same target and move to a new note only when the change is more significant than the Tolerance value.

Vibrato Segmentation Button:

The **Vibrato** button enables detection of natural vibrato in the track. Tune will segment a section with detected vibrato so that the target note of the selection is the average pitch of the vibrato. A red highlight will appear over segments in which natural vibrato was detected.

On/Off, default off.

The detection of natural vibrato is not always perfect and some false detection might occur. If you apply vibrato re-segmentation onto a section that does not have natural vibrato, it might cause artifacts or clicks. Try using Natural Vibrato for selections in which you think there is vibrato to detect and see whether Tune’s vibrato segmentation is helpful. Working with vibrato is as much an art as a science.

Natural Vibrato has separate controls for segmentation in the Segmentation section and manipulation control in the Vibrato section. Although these two applications both rely on the same type of vibrato detection processes, You will only have the option to use the

natural vibrato manipulation after you turned the segmentation on and natural vibrato was detected, in other words only the segmentation button will perform Natural vibrato detection and only on detected section you will be able to use the manipulation parameters.

CORRECTION PARAMETERS SECTION:



This section is located in the bottom center of the plug-in under the Graphic Tools section. In this section, Tune offers the three most important correction parameters: speed, note transition and ratio. We recommend starting with the default values for a moderate correction and lowering the values for a more rapid correction. All parameters in the section are applied in real time and will strongly influence the correction curve.

Speed:

Speed sets the correction speed in milliseconds, from 0.1ms to 800 ms, in 0.1 ms steps. Lower values result in rapid corrections that will flatten most of the pitch contours from the original take. With longer values, Tune will take a little longer to adjust the tune to the target note.

Note Transition:

Note Transition defines a correction speed for events where the pitch changes from one note to another. Its range is from 0.1ms to 800ms, in 0.1 ms steps. A low value or fast Note Transition will make the pitch change between notes sound jumpy and quantized, while a higher value will allow for more of the original glide.

Ratio:

Ratio sets how much of the designed correction curve will be applied on the detected audio.

Its range is from 0%-100% in 0.1% steps.

0%= no correction is applied.

100%= maximum correction is applied.

GRAPHIC TOOLS SECTION:



A graphic tool can be selected from a right click menu or by clicking its icon.

To select the **Zoom** tool, use the command/control modifier key.

To zoom out use option (Mac) or alt (Windows).

For the **Navigation** tool use the command+option/control+alt key.

The default tool is the **Note** tool.

The **Note** tool allows you to select a note or multiple notes in the Edit Window and perform various actions on anything within the selection. Select single notes by clicking them or select multiple notes by click-dragging in the Edit Window. Now you can edit the selected notes in the pitch correction curve using any of the correction parameters. In addition to these selection functions, each of the tools offer specialized graphical editing functions.

The Graphic Tools are:

Note Tool – With the **Note** tool you can select a single note by clicking on it, or a region of notes by click-dragging over the area. Selected notes can be moved to different targets within the correction grid. Point the mouse at the borders of a note and the cursor will change to a Trim tool icon, allowing you to extend or trim the length of a note. This tool is useful for fixing note transition points or fine-tuning segmentation and will be available only if there is no unvoiced section between the trimmed notes.

Zoom Tool – Select the **Zoom** tool and your cursor will become a magnifying glass with a “+” inside. When using the **Zoom** tool, click-drag to a desired area of the Edit to zoom in accordingly. The number of zoom-in stages that you make will be equal the amount of zoom-out stages needed to go back to full zoom.

Slice Tool – This tool allows you to separate a note into two or more notes, thus allowing you to drag a part of the note to a different pitch.

Glue Tool – Click on a note with the **Glue** tool it will connect to the next note. Both notes will become one selected note. If the next note is different, the clicked note will tune to its new mate. When there are no notes near the one clicked, no action will occur. If you have selected a range of notes, clicking with the **Glue** tool on any of the note segments will bring all notes within the selection to that target.

Pencil Tool – This tool allows you to draw your own pitch curve, overriding existing smoothing parameters.

Curve Tool – Click-dragging on the **Curve** tool allows you to move the selected pitch correction curve up or down in a continuous motion. If you want to create or correct a “slide” between notes while preserving all detail within the notes, you can click near the edge of the selection, enabling you to move the curve in diagonal manner. The corrected tune graph will interpolate with a smoothing factor related to the speed value.

Line Tool – This tool is similar to the **Draw** tool, but allows drawing straight lines by defining dots using a single click and ending the line with double click. This process overrides any smoothing parameters.

Navigation Tool – With this tool you can easily navigate through the entire Edit Window (up, down, left, right, diagonal, etc.)

The corrected tune graph is a “What You See Is What You Get” graph containing the smoothing derived from the specified Speed and/or Note Transition parameters (or the equivalent smoothing faders.) When the graph is constructed, the default correction parameters are always initially used.

PITCH EDIT GRAPH:

The Pitch Edit Graph fills the largest part of the Tune interface. There are four main parts to the Pitch Edit Graph:

- Waveform Overview
- Timeline Ruler
- Piano Roll
- Pitch Editor

Waveform Overview

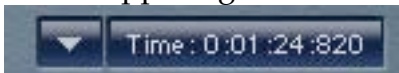
At the top of Tune Editor is the Waveform Overview.



It shows an overview of the waveform in two possible modes:

- Global Overview (currently called track overview) - shows the overall waveform, highlighting the current view of the Edit Window. The Global Overview allows for fast navigation to anywhere in the song.
- Edit Window Overview (currently called field of view) - shows the waveform corresponding to the horizontal zoom set in the Edit Window.

You can change between the two modes using the preferences pull down menu located on the upper right corner of the Tune interface, next to the time display,

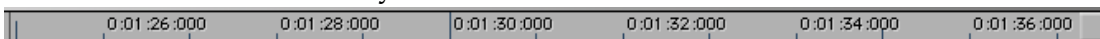


or by right clicking inside the Waveform Overview.

Clicking in the Waveform Overview area will center the view in the Edit Window to a clicked location on the timeline. Click-dragging in the Waveform Overview area will set the view of the Edit Window.

The Timeline Ruler

The Timeline Ruler is located between the Waveform Overview and the Edit Window. The Timeline Ruler is always tied to the Edit Window zoom.



Whereas selections in the Edit area allow curve editing, selection in the Timeline ruler create looped playback sections. When you click-drag on the timeline, two playback locators will appear on the Timeline Ruler to mark the beginning and end of the selection.

The Timeline Ruler has three modes:

Bars/Beats - In this mode the timeline is displayed in Bars/Beats. Use this option to snap to the host's timeline from the "time bar" pull-down menu. This will lock Tune's grid to the host's grid resolution.

Please note that Tune does not support tempo changes. You may encounter unexpected results if used within a tempo changed timeline. Remember, the timeline will be limited to ten minutes, after which pitch detection will stop.

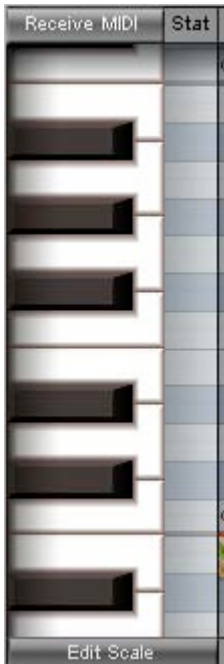
Minutes/Sec - Here, the timeline is displayed display in Minutes/Seconds. The timeline will be limited to ten minutes, after which pitch detection will stop.

Samples - This mode shows the timeline in samples. Again, the maximum length is ten minutes, after which pitch detection will stop.

When Tune reaches the ten minute limit, you will see a message in the Waveform Display Window, "Outside Session Limits."

Pitch Editor

Piano Roll



The Piano Roll allows the user to establish his own rules concerning scales, "legal and illegal" notes, and the status of each note in a desired scale. You can play reference notes by pressing the appropriate piano key or set range boundaries by dragging the edges of the scale to a desired key.

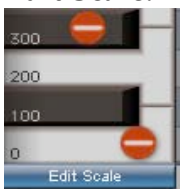
Tune offers a variety of musical scales as well as the option to create custom scales, bypass correction for certain notes and exclude certain notes so that the correction will not tune to those marked notes but to the next closest note above or below within the scale. All of this is done in the Piano Roll section.

By default, Tune has a 12 semitone grid. Each semitone quantization is subject to a tune adjuster (in cents) and a global tune value which defaults to 440Hz, but can be adjusted to any desired reference pitch. Tune allows you to select scales with different numbers of notes within each octave, plus microtonal tunings to accommodate microtonal and non-Western scales.

The Notes Grid:

The Notes Grid allows dividing octave intervals into a certain number (n) of notes. Scale Selection choice determines how many notes are available within an octave. By default, the grid consists of 12 semitones, but many more options are available within the Scale pop-up menu. Tuning of each scale note is defined in cents, and the user can offset the tune or temper use the Edit Scale feature of the Piano Roll.

Edit Scale:



The **Edit Scale** button provides an easy way to view and manipulate notes on the grid. When **Edit Scale** is not selected, the view may become too congested to accurately adjust note-specific parameters. When **Edit Scale** is selected, the Tune Notes Graph will become a single octave zoom and allow faster and clearer adjustment of per-note correction properties.

Note Tune:

When the **Edit Scale** button is on, each of the 12 notes will show its temperament, in cents. Tune can be adjusted to perfect the notes' intonation. The adjustment is in cents but allows inserting sub-decimal fractions, for maximum resolution.

Note Status:

The Note Grid assigns a status to each note in the selected grid. For instance, a major scale in a 12-note grid will have eight "legal" notes. Special status options help the automatic process to better aim to the desired target note while keeping the user informed as to what is happening.

There are five status possibilities:

Legal Note - Correct to this note.



= Illegal Note - Corrects to nearest grid note. This means that the note is illegal and the output should be tuned to the nearest legal note.



= Illegal Note - Corrects to nearest grid note above this note.



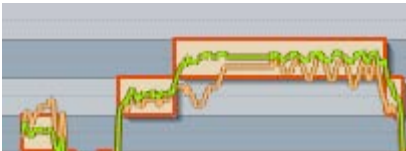
= Illegal Note - Corrects to nearest grid note below this note.

Bypass Note = Legal Note - Bypasses the fix (doesn't fix the tuning.) Here, when the input note is detected to be closest to this note, no pitch correction will take place. However, if the input note is illegal and the legal note is the nearest grid note, then correction will be applied to that note according to the other correction parameters. (For instance, if D natural is bypassed and the singer sings a few cents above an illegal C#, then the C# will be corrected to a D, even though D is bypassed.)

Just to the right of the Piano Roll is the Edit Window area.

Pitch Edit Area

This area offers continuous horizontal and vertical zoom. When Tune processes a selection for the first time, three graphs appear in the Edit Window:



The Detection Graph (light orange) - The original pitch detection of the input audio.

The Correction Graph (green) - This is a display of the automatic pitch correction as determined by the current parameters settings in the Segmentation and Correction sections.

The Note Segments - Portions of the pitch graph will be outlined by note segment blocks which resemble MIDI notes. Selected notes are highlighted in light orange for clarity. Anytime you edit the correction curve, Tune will automatically re-segment the notes to accommodate your changes.

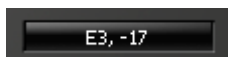
The corrected pitch graph may be further edited using a few simple tools that change the appearance of the mouse pointer in context with its current function.

Undo/Redo



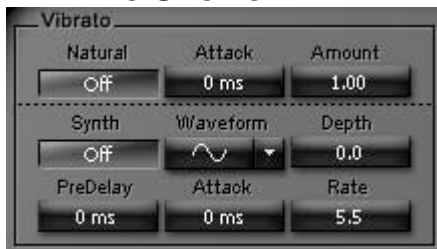
Next to the Graphic Tools section are the **Undo/Redo** buttons. These pull-down menus allow you to view and access any point of the Undo/Redo history, up to 32 levels deep.

Position window



The Position Window, located at the bottom-right of the Pitch Graph, shows you the note and cents of the note at the current cursor location.

VIBRATO SECTION



On the lower-right corner of the Tune interface is the Vibrato Section. Two vibrato types are available: Synthetic and Natural.

The *Natural Vibrato section* has the following controls:

On/Off - Turns Natural Vibrato manipulation on/off (Please note that in order to manipulate natural vibrato you first need to detect it by turning vibrato segmentation to on in places where you suspect there is a natural vib.

When selected, you will be able to manipulate the Natural vibrato in places where it was detected. The Natural Vibrato will perform a new segmentation only when the Vibrato button in the segmentation section is turned on.

Amount: 0% to 200%; Default: 100%

This is a ratio multiplier for the detected natural vibrato. At 0, the Tune will flatten the Natural Vibrato and at 200% it will double the amount of the natural vibrato.

Attack: This is the time it will take the natural vibrato modulation to build to its full assigned amount.

The *Synthetic Vibrato section* has the following controls:

On/Off button (in the Vibrato section) - Turns Synthetic Vibrato on/off.

Waveform: Waveform defines the shape of the synthetic vibrato which will be applied to a selection. Choices are: sine, triangle, square, saw up, saw down.
Default: Sine.

Pre-delay: 0 to 2000 ms; Default 0ms

This is the time it will take from the start of a new note until the synthetic vibrato commences.

Rate: 1 to 20Hz, Default: 5.0Hz

This defines the rate of the synthetic vibrato waveform modulation.

Depth: +/-0 to 400 cents; Default: 0

This value sets the amount of vibrato (or pitch deviation from the original note.) At the full synthetic vibrato setting of 400 cents, pitch will deviate by a whole step above and below the original note.

Attack: 0 to 1000ms; Default: 0ms.

This is the time it will take the synthetic vibrato modulation to build from no vibrato to its full depth.

MIDI

Each Tune instance creates a MIDI port through which it receives and sends MIDI information. The configuration varies depending on the host application. Operation of Waves Tune is possible without MIDI, but a few features are lost.

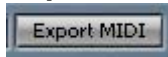
There are two applications specifically for MIDI note I/O:

Receive MIDI - Tune to MIDI Notes: On/Off button



This allows designating the current pitch according to a MIDI note, so you can actually retune to a designated note by playing it on a keyboard. This mode overrides the Notes grid (and all other modes) while MIDI notes are being played. Normal functioning resumes when no MIDI note input is sensed. MIDI note targeting overrides the speed and note transition, which can be adjusted later.

Export MIDI - Exports Correction Curve to MIDI.



You can export your completed corrections to a MIDI file which can be played by any MIDI instrument. Designated notes in the Edit Window can be translated to MIDI notes and delivered as MIDI output. Create a MIDI file simply by pressing the **Export MIDI** button located on the Waves Menu Bar. The exported MIDI file will contain the pitch contours as pitch bend control, calibrated to +/- two semitones. 127=+200 cents; 0=-200 cents. Don't forget to correctly set the pitch bend range on your synth.

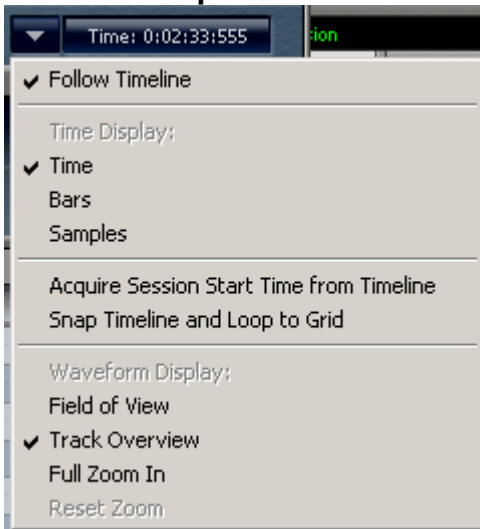
General Purpose Buttons:

If you wish to redo the automatic tuning of a selection or of an entire song after the detected and corrected Pitch Curve is established, use one of the following buttons located beneath the Edit Window, between the Piano Roll and the Re-Segment section:

Clear Graph – Clears the Detection and Correction curves from the selected area, clearing all analysis for that region. During subsequent playback, Tune will scan cleared regions as though they had never been scanned.

Select All – Selects all detected notes on the timeline and makes them ready for editing. This is convenient for making global changes to the Segmentation or Correction parameters which apply to the entire scanned take.

Preferences pull down menu



Follow Timeline- When checked, the timeline cursor will follow playback, updating the view as the cursor leaves the window. Unchecked, the current window will remain in place, regardless of playback location. Default is checked.

Time Display- Lets you choose the display format in the timeline ruler: time, bars or samples.

Acquire Session Start Time from Timeline- Tune limits the scan duration to ten minutes. If you need to correct a track which is longer than ten minutes, you must first scan the first ten minutes, perform all corrections to the graph, and re-record the finished track onto the host application. Afterwards, you can **Select All** and clear the entire graph to be prepared to scan the continuation of the song. Locate the cursor where you want to begin your new scan. When **Acquire Start Time from Timeline** is selected, Tune creates a new start time at the current cursor location, then scans the next ten minutes of material.

Snap Timeline and Loop to grid- this will snap the timeline cursor to the grid of the host application.

Field of View/ Track Overview – You can choose a Waveform overview which shows the current field in sync with the piano roll area or reveals the entire track overview.

WAVESYSTEM

The WaveSystem Toolbar provides standard functions such as preset **Save/Load** handling, **Help** button etc. This is common to all Waves Plug-ins. However, with Tune there are some special considerations which require a few unique implementations as follows:

Setup A/B - The Tune plug-in does not have Setup A/B.

Presets - Tune presets will have two separate pre-set parameters blocks: Scale and Global.

Load/Save:

Tune will load and save presets normally. When saving presets, all parameters will be saved. When loading a preset, you will be able to load the entire preset or just the scale saved in a preset so that the rest of the parameters remain unaffected.

Export MIDI - This button enables the user to export the corrected notes as a MIDI file so you can assign it to any instrument that will receive MIDI.

Using Tune

Waves Tune is designed for an intuitive and smooth workflow. Tune offers a very simple assortment of pre-sets for beginners, but allows advanced users to tailor their work with a rich collection of controls.

You'll find the Tune plug-in to be most effective if you "guide" it to the correct key and scale, based on the musical passage you are working on. With that in mind, we recommend the following workflow for ease and efficiency.

Part 1: Global parameters and preparation for scanning

We first set global parameters for optimizing the pitch detection process. The default parameters of Tune are generalized, so specifying some pre-scan preferences may make the initial auto-generated correction more useful, saving you work down the line.

- 1) **Session Start Time** - In most cases when working on songs, the default session start time is the 00:00.000. However Tune's memory management allocates memory for 10 minutes of pitch analysis. It's best you study the song before you begin the pitch analysis, to get the most out of those ten minutes. If, for example, you are working on a long session which begins at zero and there is a vocal take starting at 14:24.122, Tune's memory will be full before this vocal begins, so Tune will not track its pitch. If the vocals do not start at the beginning of a song, but instead after a lengthy introduction, begin pitch analysis at that point. Place your cursor at the start of the vocal take and select **Acquire Session Start Time from Timeline** from the preferences pull down menu.
- 2) **Reference pitch** -The first step is to define the reference pitch of your material or the music to which the vocalist sings. You'll see this control in the upper left corner of the Tune interface. The default pitch for modern Western music is middle A=440Hz. Some special Asian and European orchestras use alternate reference

tunes such as 443. Music transferred from analogue tape can exhibit pitch variances due to playback speed inconsistencies. However you determine the reference pitch, it is very important to get this right for correct targeting of the pitch correction operation.

- 3) **Global Pitch Shift-** Here you define any global pitch shift you want to perform on all scanned signal. You would use this, for example, if you have an existing vocal take that was recorded before the song was transposed.
- 4) **Formant Correction-** Choose whether or not you want formant correction. Normally you will choose formant correction for human vocals, as well as instruments with a similar resonance (woodwinds, some brass, etc.,) as this will give you much more natural pitch shift results than without formant correction. There may be times you will want to work without formant correction, but you run the risk of the familiar “Chipmunk” sound often associated with pitch shifters.
- 5) **Range-** Setting Tune’s detection range according to the singer’s range will help detection process by narrowing frequency range scanned. While Tune’s pitch detector is designed to detect the exact pitch of the fundamental frequency of the input, some cases are challenging. Since we can’t foresee the range in which your talent sings, we assign a wide, inhuman range as default. However, narrowing the Range to the singer’s expected vocal range can reduce the risk of false detection.
- 6) **Scale and Root -** While these can be changed at a later point, setting them before the initial scan will provide results that are more immediately usable.

Part 2: Scanning – pitch detecting and initial correction curve creation.

Press **Play** to scan the audio from the track where Tune plug-in is inserted. Tune will automatically scan previously un-scanned segments within the ten minute limit. During the scan, the waveform display area will highlight in orange and display a “Scanning...” message. Tune is scanning the audio and preparing the initial correction curve, however the sound output is not yet corrected, so you will hear the track in its original form.

We strongly suggest that you scan an entire song or logical segment of music before you begin correcting the track. Whereas it’s possible to scan a section of a song, work on that section’s corrections, and then scan new sections, the fact that Tune will automatically switch into Scan mode when playing un-scanned regions may prove confusing. With study and experience you will develop your own way of working with Tune, but for starters we suggest you work in a methodical manner, beginning with a complete scan of the song, followed by corrections and fine-tuning.

While scanning, Tune creates the initial suggested correction curve using a set of default correction values. Speed-15ms, Note Transition-120ms and Ratio-100% are hard coded into the initial correction graph creation but can be easily edited after the scan, even before auditioning the initial correction curve.

Once you have scanned a segment of music and made your corrections, changing the underlying audio will not automatically update the graph. If you make editorial changes to a piece or re-record a segment and drop it into your audio, you will likely need to re-scan and re-adjust the graph for that section. Select and clear graph segments to refresh them. After clearing segments, Tune will relate to them as un-scanned and will scan them on the next pass.

Part 3: Post Scan – General corrections

After performing the scan, Tune constructs the detected pitch curve and correction curve. From this point on, any audio you play on this track will be affected by the correction curve pitch adjustment, with all changes happening in real time. Remember, to modify the curves you must select something – whether an individual note or a wider selection. Changes will not affect unselected areas.

Since the correction curve is constructed by a set of defaults, now is the time to set your own general correction parameters. If you locate a small section of a track whose problems are representative of the entire scanned passage, you can experiment with the small section and then apply those parameters to the entire passage.

Segmentation Tolerance and Scale Settings

Increasing Tolerance will generally make smoother segmentation where short note glitches and slight marginal detunes will stick to the longer and more solid note in that area. Some find it convenient to use the **Select All** button to select all notes in the scanned passage and then manipulate the Tolerance parameter to see how it affects the note segmentation of the correction curve.

Vibrato segments have a tendency to create over-segmentation, in which one vibrato note may be segmented into two or three different note segments. The Tolerance parameter can reduce this over-segmentation, but it may result in an over-tolerant setting for other parts of the performance.

Tune offers a Vibrato segmentation control which will detect natural vibrato segments, then target the note closest to the average pitch of the vibrato segment while maintaining the natural vibrato. Vibrato detection is not perfect for all applications, so it is recommended to reserve the vibrato segmentation for those specific selections where your intuition tells you it should apply.

Oftentimes you will begin a project without knowing the scale or other general trends of the music. It's often easier to identify the scale after the first scan creates a suggested segmentation. Now, too, you can more easily spot a general bias in the singer's performance, such as a tendency to be flat or sharp on a certain note, and make global corrections. You can additionally "second guess" the notes grid and force the correction to the legal note above or below or even experiment with scales to see if you achieve better results.

General Correction Parameters settings

When you are satisfied with the segmentation, you can begin to adjust the general correction parameters. The three controls, located below the graphic tools, default to the settings embedded in the initial correction curve. Here's how to adjust these settings for a more personalized general correction:

Speed: Determines the speed of the correction within a note. Lower values will flatten the pitch contours into a straight line, forcing the note's pitch to the target note pitch. Higher values will make a more relaxed correction, preserving more of the original pitch contours while still correcting towards the target note.

Note Transition: This control sets how quickly or steeply a note "slides" into the next note. Very low values tend to make a note jump to the next note in an unnatural way.

This can cause an artifact which has become a creative effect occasionally (incorrectly) referred to as the “Cher Effect.”

Ratio: Here, you determine how strongly to apply the correction. Ratio defines how tight the correction should be, over the entire timeline of the correction. The default of 100% will maintain the speed and note transition values as they are in the original track. Lower values will morph the correction curve towards the detected pitch curve and a ratio of 0% will effectively bypass the correction. Think of it as a “More Correction/Less Correction” control.

Once you have manipulated all of the above controls to your liking, your song should be in good shape. In fact, you may be finished with the job. However, there likely remain some problem areas of the track which need more attention. For surgical fine-tuning and detailed vibrato corrections, Tune offers a complete set of tools to control each nuance of the pitch curve.

Part 4: Surgical Graphic Curve Editing

One size doesn't always fit all, so Tune allows you to make meticulous local modifications to all parameters. Select a note or a segment and modify the curve to meet your needs. Tune remembers the parameters applied to each segment.

The best tools for perfecting your track are your ears and your experience with sound. Since Tune synchronizes perfectly with the host timeline, you can play all the elements of your mix while making adjustments to the pitch correction. You can play or loop the smallest of sections and make adjustments in real time. It's no harder than adjusting an EQ.

First, identify a section which requires further work and define a loop around that area. You can create the loop in the host application, or you can define a loop within the Tune plug-in. Most will find it easier to set-up the loop within Tune, thus avoiding leaving and re-entering the plug-in. Dragging the cursor over Tune's Timeline ruler will define a loop playback section. Pressing **Play** will start a looped playback. While your loop is playing, the default **Note** tool allows you to select specific notes which require further correction. Zoom in on the suspect notes by holding the Command (Apple Mac) or Control (Windows PC) while dragging around the suspect area.

By zooming in closely, you should be able to locate the offensive event and start correcting it. Only selected segments will be affected by your adjustments, leaving the rest of the curve unaltered. This includes Segmentation as well as Correction parameters. Certain manipulations with the graphic editing tools (such as the **Glue** or **Slice** tools) will alter your selection in a logical manner. Until you get used to this, pay attention to the resulting selections.

Let's say that you identify an incorrect note. The singer got out of key enough so that Tune assumed the singer sang the next semitone, but actually should have gone to the full tone. Here, the first step would be to grab the note and drag it to the correct target note. Similarly, imagine the singer tried, unsuccessfully, to sing the same note twice. If Tune interpreted the second of the notes to be a different pitch, you can click on the note before the “stray ” with the **Glue** tool to merge them into one note segment, thus eliminating the note transition between them.

In the opposite case, Tune might remain at the same note, although the singer was supposed to go to the next one. Here the **Slice** tool allows segmenting the single note into separate ones by clicking on the point at which you want to slice. Click-drag to splice a whole segment. Use the **Note** tool to drag the note or segment to its correct place. By selecting specific segments, you can adjust the Correction parameters of everything within the selection, yet protect the rest of the track.

If this isn't giving you the results you desire, you can use **Line** or **Pencil** tools to draw a correction line which forces the pitch of an event to anything you desire. The **Line** and **Pencil** tools will override any correction parameters and draw the curve as you design it. After this you can still select and smooth your edit using the correction parameters.

Part 5: Vibrato Editing

Vibrato is an important part of many vocal performances. Vibrant pitch and amplitude modulations add "feel" to a vocal take but ultimately conflict with a brute force pitch correcting process. Tune allows you to achieve the kind of vibrato results you want by offering two types of vibrato editing, Natural and Synthetic.

Natural Vibrato editing relies on the detection of natural vibrato in the singer's original take. The detection can serve two different applications:

Segmentation - In the Segmentation section at the bottom left part of the plug-in is the Vibrato segmentation button. Turning it on will highlight the detected natural vibrato with a red highlight. It will eliminate over-segmentation often caused by detecting the vibrato as separate target notes. The vibrato will target it to the note closest to the average pitch of the vibrato segment.

Manipulation (depends on previously detected vibrato) - If you have a passage which is well sung, but you want to increase or decrease the amount of vibrato, use the Amount control. You can adjust up to twice the original, or down to none. If you feel the natural vibrato is not good and you want to replace it with synthetic vibrato, you can use the Amount control to flatten the natural vibrato, making way for synthetic vibrato in its place.

The natural vibrato attack control will define how quickly the manipulation attacks.

Synthetic Vibrato editing requires no detection other than the normal pitch detection and can be applied over any selection using the controls at the bottom part of the vibrato section.

The manipulations will be applied across selected segments only, so it's important to identify and select the part of the correction curve where you want to detect and manipulate the vibrato.

Part 6: Additional useful features

If you've followed the steps in parts 1-5 of this chapter, you should have a very well tuned track. Some of the processes may need to be repeated, either over previously unprocessed sections, or "on top" of existing processing, to achieve perfect results.

Undo/Redo

Tune offers a multi-level Undo/Redo. **Undo** allows you to back-up through 32 steps of history. You can jump to a specific point in history by clicking the Undo History pop-up menu, next to the **Undo** button. Each undo will create a Redo History that will allow

stepping forward until you make a change and the Undo History is broken. In this case the **Redo** button becomes grayed out and isn't available. Remember, in worst case you can always select the troublesome or overworked segment, clear it then scan it again to start from the beginning.

MIDI Receive/Export

Tune allows easy use of MIDI functions such as correcting to notes that come in real time through MIDI, or exporting a pitch curve to a MIDI file.

Receive MIDI – In this mode, Tune will “listen” for MIDI input. When Tune receives a MIDI note, it will set that note as the target note, overriding the scale and root logic parameters. This is useful if you prefer to “teach” Tune the correct note by playing it on a MIDI keyboard.

Consult the user's manual of your host application to learn how to send MIDI to a plug-in.

Export MIDI – Is located on the top left toolbar. Clicking this will prompt you for a location and filename and will generate a standard MIDI file which you can import back into your favorite MIDI sequencer. This will allow playing a MIDI instrument in unison with your vocal track, for example. You can also use Export MIDI to tune the pitch of another track against the newly exported, pitch-corrected vocal which you exported as a MIDI file. Tune can be used as a straightforward pitch to MIDI converter.