

MIDI Devices



# CUBASE STUDIO<sub>4</sub>

Music Production System



Revision and Quality Control:

Cristina Bachmann, Marion Bröer, Heiko Bischoff, Sabine Pfeifer

The information in this document is subject to change without notice and does not represent a commitment on the part of Steinberg Media Technologies GmbH. The software described by this document is subject to a License Agreement and may not be copied to other media except as specifically allowed in the License Agreement. No part of this publication may be copied, reproduced or otherwise transmitted or recorded, for any purpose, without prior written permission by Steinberg Media Technologies GmbH.

All product and company names are <sup>™</sup> or <sup>®</sup> trademarks of their respective owners. Windows XP is a trademark of Microsoft Corporation. Windows Vista is either a registered trademark or trademark of Microsoft Corporation in the United States and/or other countries. The Mac logo is a trademark used under license. Macintosh and Power Macintosh are registered trademarks.

Release Date: October 19, 2007

© Steinberg Media Technologies GmbH, 2007.

All rights reserved.

## **Table of Contents**

<b>5</b>	<b>MIDI devices</b>
6	Background
6	MIDI devices – general settings and patch handling
14	About Device panels (Cubase only)
14	Overview (Cubase only)
17	The main edit windows (Cubase only)
20	Operations in the Edit Panel window (Cubase only)
23	Building a control panel – a tutorial (Cubase only)
29	Advanced Panel handling
33	Building panels for VST Instruments
34	Exporting and importing device setups (Cubase only)
34	SysEx messages (Cubase only)
39	Defining a SysEx device – a tutorial (Cubase only)
44	Important files
47	About Studio Connections (Cubase only)
<b>49</b>	<b>Index</b>

**MIDI devices**

## Background

The MIDI Device Manager allows you to specify and set up your MIDI devices, making global control and patch selection easy.

But the MIDI Device Manager also features powerful editing functions that can be used to create MIDI device panels (Cubase only). MIDI device panels are internal representations of external MIDI hardware, complete with graphics. The MIDI device panel editor provides all the tools you need to create device maps where every parameter of an external device (and even an internal device like a VST instrument) can be controlled and automated from inside Cubase.

For descriptions of how to create device maps and the powerful device panel editing features, see [“About Device panels \(Cubase only\)”](#) on page 14. For additional information on how to create panels for VST instruments, see [“Building panels for VST Instruments”](#) on page 33.

## MIDI devices – general settings and patch handling

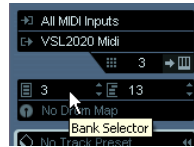
On the following pages, we will describe how to install and set up preset MIDI devices, and how to select patches by name from within Cubase. This section also describes how to create a MIDI device from scratch.

### About program change and bank select

To instruct a MIDI instrument to select a certain patch (sound), you send a MIDI Program Change message to the instrument. Program Change messages can be recorded or entered in a MIDI part like other events, but you can also enter a value in the Program (prg) field in the Inspector for a MIDI track. This way, you can quickly set each MIDI track to play a different sound.

With Program Change messages, you are able to select between 128 different patches in your MIDI device. However, many MIDI instruments contain a larger number of patch locations. To make these available from within Cubase, you need to use Bank Select messages, a system in which the programs in a MIDI instrument are divided into

banks, each bank containing 128 programs. If your instruments support MIDI Bank Select, you can use the Bank field (Bank Selector) in the Inspector to select a bank, and then the Program field to select a program in this bank.



Unfortunately, different instrument manufacturers use different schemes for how Bank Select messages should be constructed, which can lead to some confusion and make it hard to select the correct sound. Also, selecting patches by numbers this way seems unnecessarily cumbersome, when most instruments use names for their patches nowadays.

To help with this, you can use the MIDI Device Manager to specify which MIDI instruments you have connected by selecting from a vast list of existing devices or by specifying the details yourself. Once you have specified which MIDI devices you're using, you can select to which particular device each MIDI track should be routed. It is then possible to select patches by name in the track list or Inspector.

### Opening the MIDI Device Manager

Select MIDI Device Manager from the Devices menu to bring up the following window:

#### Cubase:

This is the list of MIDI devices you have connected. The first time you open the MIDI Device Manager, this list will be empty.

This button opens a selected device.

These buttons let you manage the list of installed devices.

The MIDI Device Manager window is shown with several annotations. On the left, a list of installed devices includes 'Virus A', 'V6575', and 'Audity 2000'. Below this list is a dropdown menu currently showing 'Virus A'. To the right of the list are buttons for 'Install Device', 'Open Device', 'Remove Device', 'Export Setup', 'Import Setup', and 'Import Mixmap'. At the bottom of the window, there is a section for the selected device, 'Virus A', with a dropdown menu showing 'VSL2020 Midi' and an 'Output' field.

Here you specify to which MIDI output the selected device is connected.

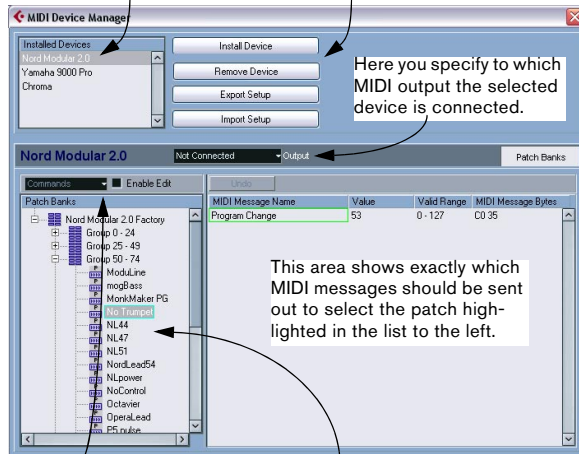
These buttons are used to import/export XML Device setups.

This button allows you to import Mixmaps.

## Cubase Studio:

This is the list of MIDI devices you have connected. The first time you open the MIDI Device Manager, this list will be empty.

These buttons let you manage the list of installed devices.



Here you specify to which MIDI output the selected device is connected.

This area shows exactly which MIDI messages should be sent out to select the patch highlighted in the list to the left.

This pop-up menu lets you edit the selected device (provided that "Enable Edit" is ticked).

Here, the patch structure is shown for the device selected above.

When you open the MIDI Device Manager for the first time, it will be empty (because you haven't installed any devices yet). On the following pages we describe how to add a pre-configured MIDI device to the list, how to edit the settings and how to define a device from scratch.

⇒ Note that there is an important difference between installing a preset MIDI device ("Install Device") and importing a MIDI device setup ("Import Setup"):

- The presets do not include any device mapping of parameters and controls and no graphic panels. They are simply patch name scripts. When you install a preset MIDI device, it is added to the Installed Devices list. For more information about patch name scripts, see ["Patch name script text files"](#) on [page 46](#).
- A device setup can include device mapping, panels and/or patch information. Device setups are also added to the list of installed devices when imported. For more information about setups and device panels, see ["About Device panels \(Cubase only\)"](#) on [page 14](#).

## Installing a MIDI device

To install a preset MIDI device, proceed as follows:

1. Click the Install Device button. A dialog appears listing all pre-configured MIDI devices. For now we assume that your MIDI device is included in this list.

2. Locate and select the device in the list and click OK.
  - If your MIDI device isn't included in the list but is compatible with the GM (General MIDI) or XG standards, you can select the generic GM or XG Device options at the top of the list.

When you select one of these options, a name dialog will appear. Enter a name for the instrument and click OK.

Now the device appears in the Installed Devices list to the left.

3. Make sure that the new device is selected in the list and pull down the Output pop-up menu.

4. Select the MIDI output that is connected to the device.

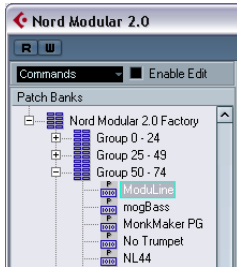
5. If you are using Cubase, click the Open Device Panels button.

Now a separate window opens for the selected device, showing a node structure in the left half of the window. At the top of this structure is the device itself, and below it the MIDI channels used by the device. For more information about the Device window, see ["The main edit windows \(Cubase only\)"](#) on [page 17](#).

6. Select Patch Banks from the pop-up at the top of the window.



The Patch Banks list in the left half of the window shows the patch structure of the device. This could simply be a list of patches, but it's usually one or several layers of banks or groups containing the patches (much like a folder structure on a hard disk for example).

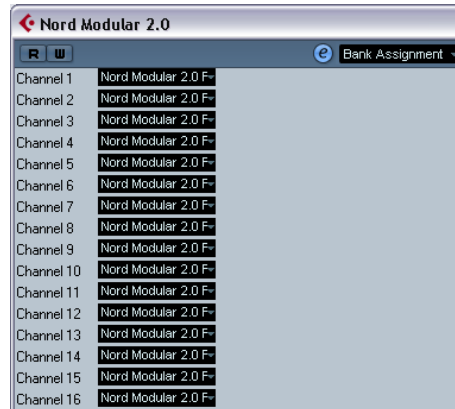


- You can rename a device in the Installed Devices list by double-clicking and typing – this is useful if you have several devices of the same model, and want to separate them by name instead of by number.
  - To remove a device from the Installed Devices list, select it and click Remove Device. The device will be deleted immediately.
- ⇒ Note that if there already exists a panel for the device, opening the device might open this panel first. In this case, click on the Edit (“e”) button to open the Device window.

## About Patch Banks

Depending on the selected device, you may find that the Patch Banks list is divided in two or more main banks. Typically, these are called Patches, Performances, Drums etc. The reason for having several patch banks is that different “types” of patches are handled differently in the instruments. For example, while “patches” typically are “regular” programs that you play one at the time, “performances” may be combinations of patches, which could e.g. be split across the keyboard, layered or used for multitimbral playback.

For devices with several banks, you will find an additional item labeled “Bank Assignment” in the pop-up at the top of the window. Selecting this opens a window in which you can specify for each MIDI channel which bank it should use.



The selection here will affect which bank is displayed when you select programs by name for the device in the track list or Inspector. For example, many instruments use MIDI channel 10 as an exclusive drum channel, in which case you would want to select the “Drums” (or “Rhythm Set”, “Percussion”, etc.) bank for channel 10 in this list. This would then let you select between different drum kits in the track list or Inspector.

## Limitations

There is no easy way to import a patch name script into an existing MIDI device. For a complex workaround based on XML editing, see [“Editing the device setup XML files directly”](#) on [page 45](#).



## Selecting a patch for an installed device

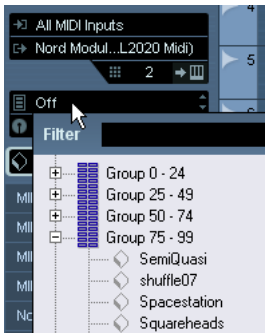
If you return to the Project window at this point, you will find that the installed device has been added to the MIDI Output menus (in the track list and the Inspector). Now you can select patches by name, in the following way:

1. Pull down the Output menu (in the track list or Inspector) for a track that you want to play the installed device, and select the device.

This directs the track to the MIDI output specified for the device in the MIDI Device Manager. The bank and program fields in the track list and Inspector are replaced by a single Programs field that currently reads "Off".

2. Click the Programs field to display a pop-up menu, hierarchically listing all the patches in the device.

The list is similar to the one displayed in the MIDI Device Manager. You can scroll the list up and down (if required), click the plus/minus signs to show or hide subgroups, etc.



You can also use a filter function here. For this, enter the search term in the Filter field, e.g. "drum", and press [Return] to display all sounds with "drum" in the name.

3. Click a patch in the list to select it.

This sends the appropriate MIDI message to the device. You can also scroll the program selection up or down, as with any value.

## Renaming patches in a device

The pre-configured devices list is based on the factory-preset patches, i.e. the patches included in the device when you first bought it. If you have replaced some of the factory presets with your own patches, you need to modify the device so that the patch name list matches the actual device:

1. In the MIDI Device Manager, select the device in the Installed Devices list.

2. If you are using Cubase, click Open Device.

Make sure that Patch Banks is selected on the pop-up at the top of the window.

3. Activate the Enable Edit checkbox.

When this is turned off (default), you cannot edit the pre-configured devices.

4. Use the Patch Banks display to locate and select the patch you want to rename.

In many instruments, the user-editable patches are located in a separate group or bank.

5. Click on the selected patch in the Patch Banks list to edit its name.

6. Type in the new name and click OK.

7. Rename the desired patches in this way, and finish by deactivating Enable Edit again (to avoid modifying the device by accident).

⇒ You can also make more radical changes to the patch structure in a device (adding or deleting patches, groups or banks), see below.

For example, this would be useful if you expanded your MIDI device by adding extra storage media such as RAM cards, etc.

## Patch Structure

Patches are structured as follows:

- Banks are the main categories of sounds – typically patches, performances and drums, as described above.
- Each bank can contain any number of groups, represented by folders in the list.
- The individual patches, performances or drum kits are represented by presets in the list.

The Commands pop-up menu contains the following items:

### Create Bank

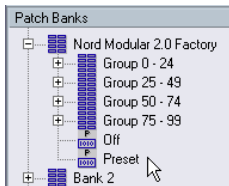
Creates a new bank at the highest hierarchical level of the Patch Banks list. You can rename this by clicking on it and typing a new name.

### New Folder

Creates a new subfolder in the selected bank or folder. This could correspond to a group of patches in the MIDI device, or just be a way for you to categorize sounds, etc. When you select this item, a name dialog will appear, allowing you to name the folder. You can also rename the folder afterwards by clicking it and typing in the list.

### New Preset

This adds a new preset in the selected bank or folder.



You can rename the preset by clicking it and typing a new name.

When the preset is selected, its corresponding MIDI events (Program Change, Bank Select, etc.) are shown in the event display to the right. The default setting for a new preset is Program Change 0 – to change this, use the following procedures:

- ⚠ For details on which MIDI events are used for selecting patches in the MIDI device, consult its documentation.

- To change which Program Change value should be sent out to select the patch, adjust the number in the Value column for the Program Change event.
- To add another MIDI event (e.g. Bank Select) click directly below the last event in the list and select a new event from the pop-up menu that appears. After adding a new event, you need to set its value in the Value column, as with Program Change.
- To replace an event, click on it and select another event from the pop-up menu.

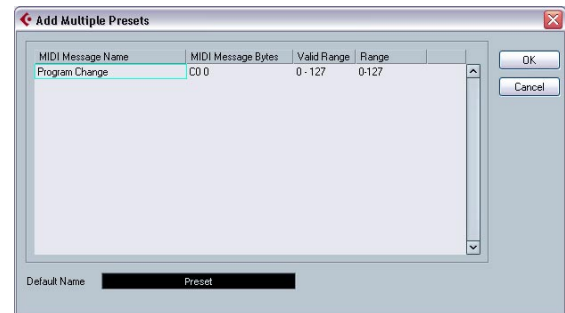
For example, a MIDI device may require that a Bank Select message is sent first, followed by a Program Change message, in which case you would need to replace the default Program Change message with a Bank Select message and add a new Program Change after that.

- To remove an event, select it and press [Delete] or [Backspace].

- ⚠ Different devices use different schemes for Bank Select. When you insert a Bank Select event, you should check the device's documentation to find whether to choose "CC: BankSelect MSB", "Bank Select 14 Bit", "Bank Select 14 Bit MSB-LSB Swapped" or possibly some other option.

### Add Multiple Presets

This opens a dialog, allowing you to set up a range of presets to be added in the selected bank or folder.



Proceed as follows:

1. Add the event types required for selecting a patch in the MIDI device. This is done just as when editing the settings for a single event: clicking in the event display brings up a pop-up menu from which you can select an event type.

2. Use the Range column to set up either a fixed value or a range of values for each event type in the list.

This requires some explanation:

If you specify a single value in the Range column (e.g. 3, 15 or 127), all added presets will have an event of this type set to the same value.

If you instead specify a value range (a start value and an end value, separated by a dash, e.g. 0-63), the first added preset will have an event set to the start value, the next value will be incrementally raised by one and so on, up to and including the end value.

⇒ The number of added presets depends on the Range setting.

MIDI Message Name	MIDI Message Bytes	Valid Range	Range
Program Change	C0 0	0 - 127	0-7
CC: BankSelect MSB	B0 0 0	0 - 127	2

This will generate eight presets, each with a Bank Select event set to 2, but with different Program Change events (ranging from 0 to 7).

3. Specify a Default Name below the event display.

The added events will get this name, followed by a number. You can rename presets manually in the Patch Banks list later.

4. Click OK.

A number of new presets are now added in the selected bank or folder, according to your settings.

### Other editing functions

- You can move presets between banks and folders by dragging them in the Patch Banks list.
- You can remove a bank, folder or preset by selecting it in the Patch Banks list and pressing [Backspace].
- If you specify more than one bank, a Bank Assignment item will be added to the pop-up menu at the top of the window. Use this to assign banks to the different MIDI channels (see [“About Patch Banks”](#) on page 8).

## Defining a new MIDI device

This section describes how to define a new MIDI device.

If your MIDI device is not included in the list of pre-configured devices (and is not a “plain” GM or XG device), you need to define it manually to make it possible to select patches by name. This is handled slightly differently for Cubase and Cubase Studio.

### Cubase:

1. In the MIDI Device Manager, click the Install Device button.

The Add MIDI Device dialog appears.

2. Select “Define New...” and click OK.

The “Create New MIDI Device” dialog appears. For a description of all the options in this list, see [“The Create New MIDI Device dialog”](#) on page 12.

3. Activate the MIDI channels you would like the device to use in the Identical Channels list.

This means that the device will receive Program Change over any MIDI channel. For a description of Identical and Individual channels, see the section [“The Create New MIDI Device dialog”](#) on page 12.

4. Enter a name for the device at the top of the dialog, click [Enter] and then OK.

The device appears in the Installed Devices list, and the device node structure for the device is shown automatically in a new window.

5. Select Patch Banks from the pop-up at the top of the window.

As you can see, the list is currently empty.

6. Make sure the Enable Edit checkbox is activated.

Now you can use the functions on the Commands pop-up menu to the left to organize the patch structure of the new device.

### Cubase Studio:

1. In the MIDI Device Manager, click the Install Device button.

The Add MIDI Device dialog appears.

2. Select “Define New...” and click OK.

A dialog appears.

3. Enter the name of the device and the MIDI channels you would like the device to use and click OK.

The device appears in the Installed Devices list.

4. Select the device in the list.

As you can see, it currently contains only an Empty Bank item.

5. Make sure the Enable Edit checkbox is activated.

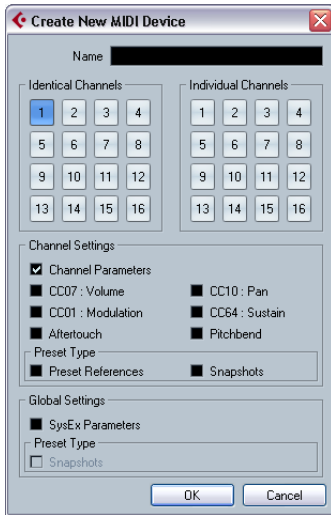
Now you can use the functions on the Commands pop-up menu to the left to organize the patch structure of the new device.

## The Create New MIDI Device dialog

When you select “Define New” in the Add MIDI Device dialog, the Create New MIDI Device dialog opens.

⇒ If you are using Cubase Studio, this is where you can enter a name for the new device and specify which MIDI channels you want the device to use.

⇒ If you are using Cubase, the dialog contains the following settings:



Item	Description
Identical/ Individual Channels	Here you can specify which MIDI channels you wish the device to use. Identical channels share channel settings and parameters, whereas Individual channels are “exclusive”. An example for this are GM/XG devices – in these devices, the channels are all identical, except channel 10, which is always the drum channel.
Channel Settings	This specifies which MIDI messages should be supported by the MIDI device (for each Identical channel).
Preset Type	Preset References contain the patch name and a corresponding MIDI message (typically Program Change/ Bank Select). Snapshots also contain a patch name but in addition complete parameter settings, which are reset when such a preset patch is recalled. For more information about snapshots, see <a href="#">“Working with snapshots”</a> on page 32.

Item	Description
Global Settings SysEx Parameters	Activate this checkbox if you wish the device to use System Exclusive messages. For more information about SysEx messages, see <a href="#">“SysEx messages (Cubase only)”</a> on page 34.
Global Settings Snapshots	This specifies whether the device supports global snapshots, which memorize all parameters in a device. For more about snapshots, see <a href="#">“Working with snapshots”</a> on page 32.

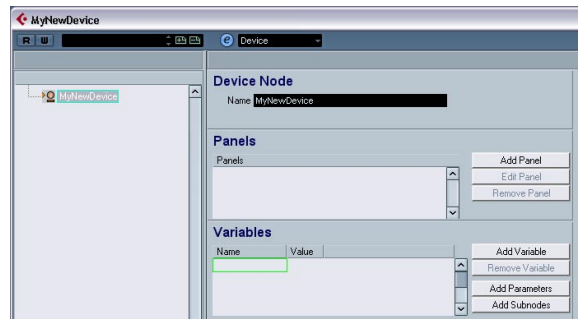
⚠ Once you set the attributes (identical/individual channels, snapshots) here, changes can only be applied with major effort like direct editing in XML, see [“Editing the device setup XML files directly”](#) on page 45. However, there is a little workaround for channel settings, see below.

⇒ If you create identical channels with the Channels setting “Snapshot” and delete one of them and create a new channel instead, this channel will be individual and without the snapshot ability! For more information about the Snapshot options, see [“Working with snapshots”](#) on page 32.

### Creating a new MIDI device without channels/subnodes

It is possible to create a new device without any channels/subnodes. For this, deselect all channels in the Create New MIDI Device dialog. (If you want, you can activate the options SysEx Parameters and Snapshots in the Global Settings section.)

The Device window is opened.



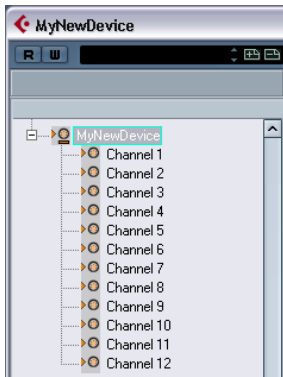
You can now add sets of identical MIDI channels/subnodes via the Add Subnodes button. However, if subnodes are added directly to the device node, the MIDI connections are not automatically created. (In this case, the variables column remains empty for the new channel and the Device panel will not send data to the MIDI device.)

To build the MIDI connection, you have to activate the Create Multiple option in the Add Subnodes dialog.

Proceed like in our following example:

1. Select the device in the list to the left.
2. Click on the Add Subnodes button.
3. Enter a name for the Subnodes, e.g. "Channel", and activate the Create Multiple option.
4. Enter the Variable Name "channel", the Variable Range, e.g. "1-12", and click OK.

This way, 12 channels with identical settings are generated.

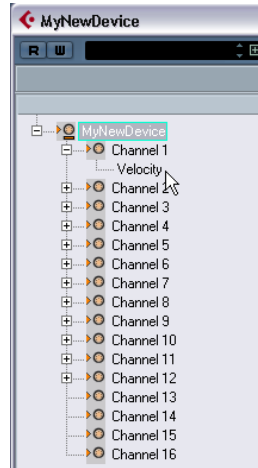


⇒ If you want to create only one MIDI channel, e.g. Channel 9, simply enter "9" as range.

5. Add more multiple subnodes, e.g. "channel B" and a range from "13-16", with the Create Multiple option activated.

This way, you will generate a second set of four subnodes with identical settings.

6. You can now test the resulting configuration by adding a parameter to channel 1. The parameter will appear in every channel from 1-12, because of their identical setting, but not in the channels 13-16.



For a practical example of this approach, see ["Defining a SysEx device – a tutorial \(Cubase only\)"](#) on [page 39](#).

If you want to give the subnode "Channel 5" an individual setting now, you have to delete "Channel 5" and add it as a new subnode (with the Create Multiple option activated).

⇒ A drawback of the approach described here is that you can never activate the Snapshot option for Channels, see ["Working with snapshots"](#) on [page 32](#).

## About Device panels (Cubase only)



On the following pages we will describe how to use MIDI Device panels and the powerful MIDI device panel editing features of the MIDI Device Manager.

⇒ We recommend that you first configure the patch banks, then export the device setup before editing the panels. This way, most of your settings will be saved in case of panel configuration problems.

The panels are saved in XML format. For more information, see [“Panel XML files”](#) on [page 45](#).

### Basic concept

The panel editing features in the MIDI Device Manager can be seen as a separate application or entity within Cubase. It allows you to build device maps complete with control panels, with all parameters controllable from within Cubase. Building more complex device maps requires that you are familiar with SysEx programming (see [“SysEx messages \(Cubase only\)”](#) on [page 34](#)). But you can also create simpler panels by assigning MIDI Control Change messages to control objects, which does not require any programming skills.

Although these powerful editing features are there if you need them, you do not have to use them to use MIDI devices.

Seasoned Cubase users may recall the MIDI Mixer, which allowed you to create similar control setups, called Mixer maps. Third-party developers created Mixer Maps for hundreds of popular devices at that time.

But in Cubase, this concept has been taken to a higher level, offering a much deeper and more intuitive integration of the control features in the program.

## Overview (Cubase only)

### Device panels in the program

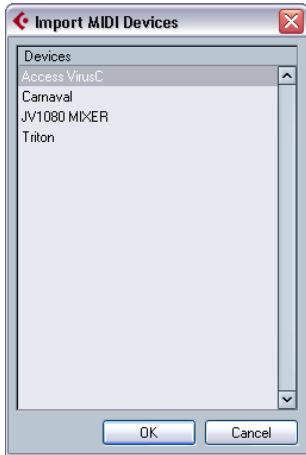
In this section we shall take a look at a pre-configured MIDI device panel to illustrate how it can be used in Cubase. Several device setups complete with panels are included with the program. These are located in the “Device Maps” folder inside the application folder.

### Opening a device setup

Proceed as follows to open a MIDI device setup:

1. Open the MIDI Device Manager from the Devices menu.
2. Click the “Import Setup” button.  
A file dialog opens.
3. Select a device setup file for import by navigating to the Device Maps folder (see above).  
The Device setup files are saved in XML format; for more information about them, see the section [“Device setup XML files”](#) on [page 44](#).

4. Click Open. The Import MIDI Devices dialog appears where you can select one or several devices for import. A device setup file can contain one or several MIDI devices.



5. Select a device and click OK.

The device is added to the list of installed devices in the MIDI Device Manager.

6. Select the correct MIDI output from the Output pop-up menu, select the device in the list and click the Open Device button.

The device control panel opens in a separate window. The Edit ("e") button at the top opens the Edit Panel window, the main edit window, see ["The Edit Panel window"](#) on page 19.



A device control panel representing an Access Virus synth.

7. Close the Device panel and return to the Project window.

8. Select the device from the "Out" pop-up menu for a MIDI track.

Note that for some devices, you may have to set the MIDI channel to "ANY".

Now the Device panel can be opened by clicking the Open Device Panels button in the Inspector or in the channel strip for the corresponding track in the Mixer.

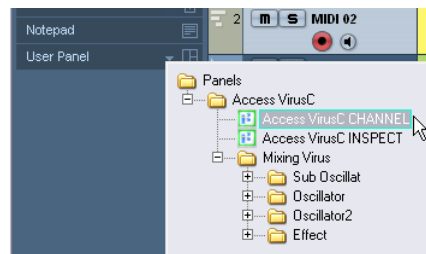


⇒ Note that [Ctrl]/[Command]-clicking the Open Device Panels button allows you to open a subpanel via the panel browser pop-up menu.

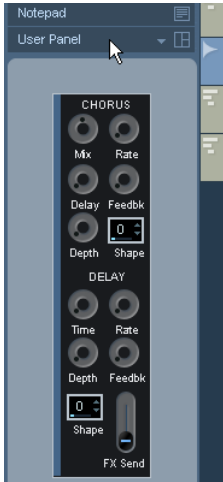
### Showing panels in the Inspector

1. In the Inspector, open the User Panel tab and click on the arrow to the right.

A "Panels" folder is shown with the selected device in a node structure below it. If you open all the folders, you can select any individual panel from the device that "fits" into the User Panel space.



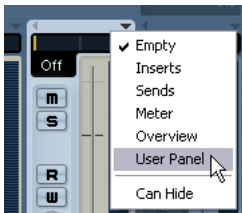
2. Select a panel by double-clicking it in the list. The panel opens in the Inspector.



⇒ If you can't see any panels in the "Panels" folder, although you have successfully set up a MIDI device with several panels, make sure you selected the correct channel from the Channel pop-up menu, preferably "Any" to see all device panels. Also make sure that the panels fit into the space, otherwise they will not be available in the "Panels" folder.

### Showing panels in the Mixer

1. Open the Mixer and make sure the extended channel view is shown.
2. Open the View options pop-up for the MIDI channel connected to the device and select "User Panel".

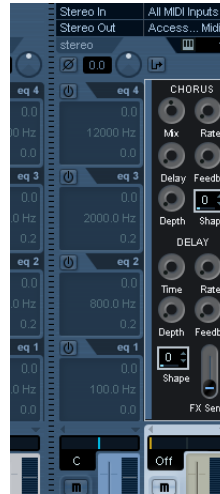


3. Click the arrow next to the label "user" at the top of the extended section of the channel strip.

The Panels folder is displayed like in the Inspector, but with different available panels. Just like in the Inspector, the panel has to "fit" into the available space to be selectable.

4. Double-click to select a panel.

The panel is now shown in the extended section of the channel strip.



### Automating device parameters

Automation works just like for normal audio and MIDI tracks:

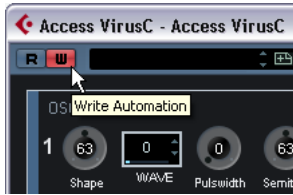
1. Open the device control panel by clicking the Open Device Panels button in the Inspector.





## 2. Activate Write automation on the device panel.

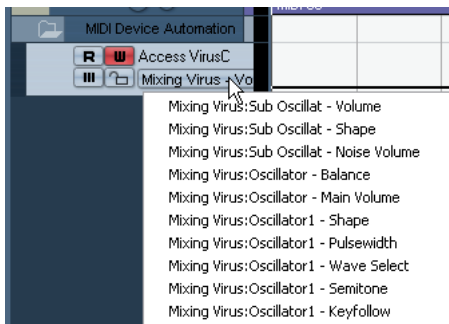
You can automate the device by either moving knobs and sliders on the control panel or by drawing curves on the automation track for a selected parameter.



## 3. If you now go back to the Project window, there will be a MIDI Device Automation track in the Track list.

If the track is hidden, select "Show Used Automation" on the Track Folding submenu of the Project menu.

If you click in the name field, all parameters in the device are shown and can be selected for automation.



- To open another automation track for the next parameter on the pop-up menu, click the + button ("Append automation track") at the bottom left of the automation track.

⇒ If you wrote automation but your MIDI device is not yet connected, the panel will not display any parameter changes when playing back the track with the Read button activated.

# The main edit windows (Cubase only)

To edit device panels you use two main windows; the Device and the Edit Panel window. In this section we will describe the main working areas of these edit windows and what they are used for.

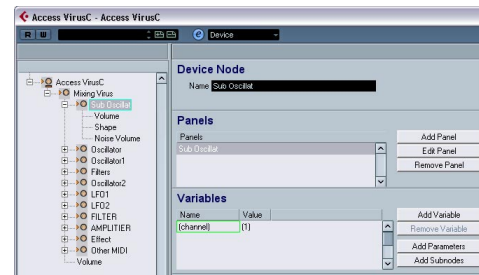
## The Device window

### 1. Select a device in the Installed Devices list in the MIDI Device Manager and click Open Device.

The Device window opens with a node structure in the left half of the window. In this example, the top node represents the device and the subnodes the MIDI channels used by the device.

### 2. Click on a node.

Now three areas appear to the right of the node structure: Device Node, Panels and Variables.



The Device window.

## Device structure

On the left is a hierarchical view of the device's structure, which can consist of nodes, subnodes, and parameters. By default, the structure of a newly created device (or a device with no panels added yet) will either be based on the MIDI channels that have been activated in the Create New Device dialog (see "The Create New MIDI Device dialog" on page 12) or, as in this case, on one of the preset devices, which all have the same structure (all 16 MIDI channels activated).

In the Device structure, you can easily move parameters between nodes by clicking and dragging them to the other node. This is very handy if you want to restructure your parameters for the panel assignments.

You can also delete empty nodes and parameters by selecting them and pressing [Delete] or [Backspace].

## Device node

This shows the name of the selected node. You can rename some or all nodes, for example if the device is a typical GM-compatible synth you may want to rename “Channel 10” to “Drums”.

## Panels

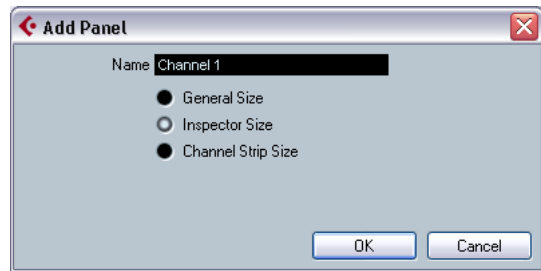
In the Panels window area a list of panels assigned to the selected node will be shown (currently no panels are assigned).

- The “Add Panel” button opens the Add Panel dialog, see [“The Add Panel Dialog”](#) on page 18.
- When an existing panel is selected in the Panels window area, the “Edit Panel” button will open the panel for editing in the Edit Panel window, see [“The Edit Panel window”](#) on page 19.

## Variables

- The “Add Variables” button lets you define variables. Variables are useful when you’re working with multiple instances of the same panel. A typical example is when you have a multi-timbral synthesizer with 16 parts, where each part is identical in terms of features and functions, and all that distinguishes them are the MIDI channel numbers. So you create multiple subnodes where the variable is named “part” and the variable range is 1–16. This way you can repeat the same objects and parameters across all parts.
- The “Add Parameters” button opens the “Add Parameter” dialog where you define the parameters that will be used in the Panel. A parameter defines how the setting of the connected device can be modified, what the valid range is and what the current state of the parameter is. Parameters are assigned to objects (see [“Control to parameter assignment area \(bottom middle\)”](#) on page 20), i.e. knobs, faders, switches or data entry fields on a panel.
- The “Add Subnodes” button lets you create subsidiary nodes. This is useful when you wish to create multiple panels for one node. When you build a device panel you may want to break it up in several parts, or “subpanels” – e.g. one for the Envelope section, one for the Filter section and so forth. By creating all panel sections under separate subnodes, you can show the different sections in the Inspector or channel strip. From these subpanels you can later build a large main panel using the subpanels, see [“Creating complex panels”](#) on page 30.

## The Add Panel Dialog

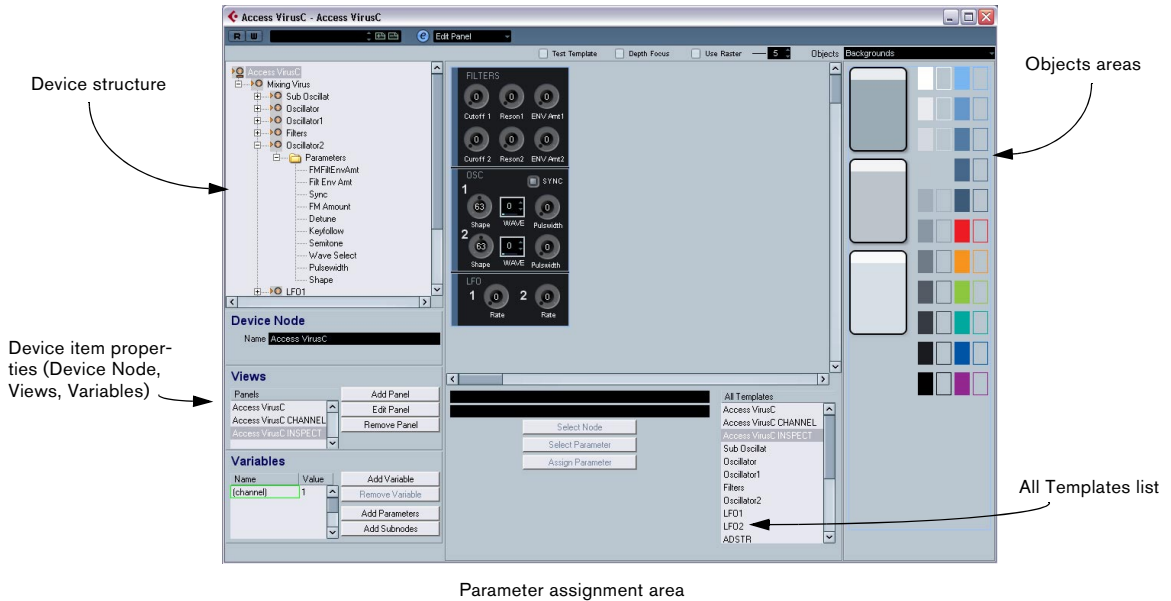


Clicking the “Add Panel” button in the Device window opens a dialog where you select the size and enter a name for the new panel. You have three default sizes to choose from:

- **General Size (352\*352 pixels by default).**  
This is the largest view, which is to be used in a separate Panel window. The size is customizable, as you often need more than 352 by 352 pixels to fit all controls of an entire instrument into one screen.
- **Inspector Size (157\*342 pixels).**  
The standard size for a Panel to be used in the Inspector.
- **Channel Strip Size (84\*322 pixels).**  
The standard size for a panel to be used in a Mixer channel strip.

# The Edit Panel window

Edit area



After selecting a name and a panel size in the Add Panel dialog, click OK to open the Edit Panel dialog. When a panel has been added, you can switch between all edit windows (Device/Edit Panel/Patch Banks) by using the pop-up menu at the top of the window.

The Edit Panel window contains the following areas:

## Device structure (top left)

This is the device “tree” where you can navigate the device structure and its nodes, subnodes and parameters. It is the same as shown in the Devices window, but without the possibility to move or delete nodes or parameters.

## Edit area (top middle)

This is the “stage” where you build the panel from various object components. Above the edit area are the Panel Edit settings which affect the operations you perform in the edit area.

## Objects area (right)

This area contains the predefined objects which can be dragged and dropped into the edit area. At the top of this area there is a pop-up menu where you can select Object categories; backgrounds, faders, knobs, data entry, switches and labels, see “[The available objects](#)” on [page 20](#).

## Properties area (bottom left)

This contains all data and options pertaining to the currently selected node, subnode or parameter.

- When a node or subnode is selected in the device structure, you can rename it and add or remove parameters or variables and add subnodes. (Subnodes can only be removed in the Device window.)
- When a parameter is selected in the device structure, you can edit its name, value and transmission type (Control Change or SysEx messages).

At the top you can see and edit the node name. In the Views area, you see the list of panels assigned to the current node. Using the buttons to the right of the list, you can add a new (blank) panel to a node and edit or remove an existing panel.

The way to reach a particular panel or subpanel is to select a node in the device structure area, and then select the desired panel in the Views window area. If you click the Edit Panel button, the panel will open in the edit area.

Alternatively, you can click on an entry in the All Templates list (see below), which directly opens the respective panel.

- It is also possible to drag a subnode's panel from the "Views" area into the panel of a parent node, see ["Creating complex panels"](#) on [page 30](#).

### Control to parameter assignment area (bottom middle)

This area has two functions:

- You can link parameters with controls, see ["Assigning parameters"](#) on [page 21](#).
- You can see to which node a panel element belongs, see ["Identifying the nodes and templates"](#) on [page 31](#).

### All Templates list (bottom right)

As panels are created, they are added to the All Templates list.

- You can switch between templates, copy objects that you need, switch back to the panel you're currently editing and paste the objects into that panel.

### The available objects

On the Objects pop-up in the top right corner you can select between object categories. Faders, knobs, data entry and switches are control objects, i.e. you have to define a parameter assignment to them when inserted into the edit area, whereas labels and backgrounds are only graphic elements. The object categories are as follows:

Object category	Description
Backgrounds	Here you can select various background colors and borders.
Faders	There are four basic horizontal and vertical fader/slider types, each with three options: basic, with title field, and with title field and min-max values.
Knobs	Various types of knobs, with and without title fields and min-max values.

Object category	Description
Data entry	Various types of data entry fields for entering values. There are data entry fields for direct entry, and data entry types for using up/down arrows or sliders (or both) to set values.
Switches	Switches can only send two values. There are three basic types of switches: on/off, momentary and one shot. Momentary switches change to the second value as long as the switch is pressed and revert back when released. One shot switches activate a command, e.g. resetting a value to a default value.
Labels	Labels of various sizes and styles.

## Operations in the Edit Panel window (Cubase only)

On the following pages, we will describe the basic operations in the Edit Panel window. For a more "hands on" description of how to create panels, see ["Building a control panel – a tutorial \(Cubase only\)"](#) on [page 23](#).

### Creating a panel

1. Either create a new MIDI Device (see ["Defining a new MIDI device"](#) on [page 11](#)), or select a preset device from the Add MIDI Device dialog, see ["Panels"](#) on [page 18](#).

2. In the MIDI Device Manager dialog, select the device in the Installed Devices list and click the Open Device Panels button.

Now the Devices window opens with the Device structure to the left.

3. Select the node, subnode or parameter you wish to add a panel to.

4. Click the Add Panel button, and select a name and size for the panel, see ["The Add Panel Dialog"](#) on [page 18](#). The Edit Panel window opens.

When you have created a new panel you will see a light blue rectangle which defines the size of the panel. When you click on the rectangle, resize handles will appear. These allow you to customize the Panel size.

⇒ If you are creating a specific Inspector or Channel Strip panel you should not resize the panel.

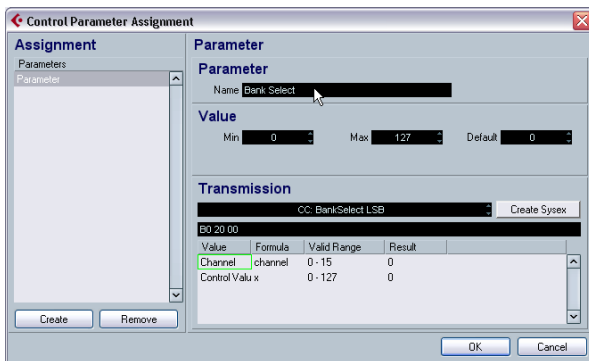
## Adding objects

You build a panel by dragging objects from the Objects area on the right hand side of the window into the rectangle in the edit area.

## Assigning parameters

Parameters can be assigned to control elements (switches, faders, etc.). This is done in the Control Parameter Assignment dialog. This dialog is opened automatically when you add a control object, but you can also open it later to change the assignment for existing objects.

- When you add control objects, the Control Parameter Assignment dialog is opened:



In this dialog you can create and define a name for the parameter and set the parameter value range and a transmission message (see below). On the left, you can also select any parameters that were defined for this subnode. When you have set up the parameters as desired, click OK to close the dialog.

- To open the Control Parameter Assignment dialog for an already existing control object, double-click on the element.

If you want to assign an already defined parameter from another node, proceed as follows:

1. Click on the control object.
2. Select a parameter in the device structure area on the left.  
The parameter data is displayed on the bottom left.
3. Click on the Assign Parameter button in the Control Assignment area (below the Edit area).

## Editing parameters

You can either edit parameters in the Control Parameter Assignment dialog or you click on the Parameter in the Device structure on the left to display its Parameter data (see “[Properties area \(bottom left\)](#)” on [page 19](#)) and edit them in the following sections:

### Parameter name

Here you can enter or edit the parameter name.

### Parameter value

In the “Min” and “Max” fields you can set the value range for the parameter. The Default value determines what the value will be when you open the device.

### Transmission

Here you set the parameter assignment. Clicking in the value field opens the Transmission pop-up menu where you can select either “Channel Messages”, i.e. MIDI Control Change messages, or SysEx messages.

If you wish to create custom SysEx messages, click the “Create SysEx” button to open the respective dialog.

For information on SysEx and SysEx editing, see “[SysEx messages \(Cubase only\)](#)” on [page 34](#) and “Working with System exclusive messages” in the Operation Manual.

## Object handling

### Selecting objects

You select an individual object by clicking on it.

- Select multiple objects by pressing [Shift] and clicking on each object in turn.
- You can also click in an empty area and drag a selection rectangle around one or more objects to select them.
- To select the complete panel, press [Ctrl]/[Command]+[A]. This way, the panel items also “remember” their place in the panel arrangement.

### Moving objects

Simply click-drag an object to a new location and drop it.

- You can also use the arrow keys to move a selected object one pixel horizontally or vertically.
- If you press [Shift], the arrow keys will move the object in steps of 10 pixels.

## Using cut/copy/paste

You can use standard key commands ([Ctrl]/[Command] + [X], [Ctrl]/[Command]+[C], [Ctrl]/[Command]+[V]) or the corresponding Edit menu items to cut, copy and paste selected objects.

## Deleting objects

Select any object(s) and hit [Backspace] or [Delete] or select “Delete” from the context menu.

## Resizing objects

Click on any object to make resize handles appear. Click and move the handles to resize the object.

## Sending objects to front/background

Select an object and right-click (Win)/[Ctrl]-click (Mac) to bring up the context menu.

- Choose “To Front” to make the selected object the topmost one.
- Choose “To Background” to place the object behind all other objects.

## Editing text

Double-click on any text (text object or text label on a control object) and enter the text.

## Aligning objects horizontally/vertically

Select multiple objects, then right-click (Win)/[Ctrl]-click (Mac) to open the context menu.

- For horizontal alignment, your options are Left, Centre and Right.
- For vertical alignment, you can choose Top, Middle and Bottom.

## Spacing objects evenly

Select multiple Objects and open the context menu. Select “Space Evenly Horizontally” or “Space Evenly Vertically” to place the objects in a row or column with identical distances between the objects.

## Making objects the same size

Select multiple Objects and resize one of them. All selected Objects will be resized in accordance with the source Object.

## Import Bitmap

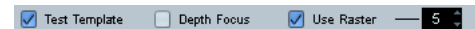
You can use bitmaps (pictures) as backgrounds as well. Open the context menu and select “Import Bitmap...”. You can import custom bitmaps in the following formats: PNG (Portable Network Graphics), PSD (Photoshop) or BMP (Windows bitmap).

⇒ To change an imported bitmap in the panel, double-click on the bitmap. The Select Resource dialog opens, where you can choose a bitmap from the list of already imported bitmaps or import a new one.

## Edit object parameter

Double-click on a control object (knob, fader, data entry, switch) to open the Control Parameter Assignment window, see “Editing parameters” on [page 21](#).

## Panel edit settings

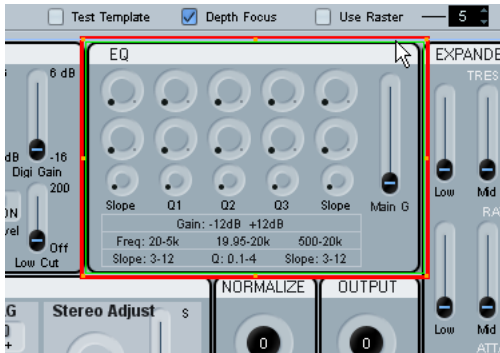


## Test Template

Puts the currently edited panel into live test mode. All controls will be fully functional, transmitting MIDI data to the device when an output is set. Activate this mode when you want to try out the panel to make sure that all parameters are set up correctly or if you want to take snapshots of your settings (see “Working with snapshots” on [page 32](#)).

⇒ You cannot edit objects while in test mode.

## Depth Focus



This is useful when editing very complex panels, or panels featuring nested views (subpanels). By enabling Depth Focus, you get a red rectangle around the area whose level is currently in edit focus. By double-clicking inside a subpanel, the red rectangle will mark the boundaries of the subpanel and you can only edit objects inside the focus area. For each double click, you go down one level. To go up one level, press [Return].

## Use Raster

This activates an invisible grid that objects will snap to when moved. The value (5 by default) dictates the resolution of the grid. With a value of 20, the raster will be made up of squares of 20\*20 pixels in size. The raster is anchored in the top left corner of the actual panel (not in the edit area).

## Building a control panel – a tutorial (Cubase only)

In this tutorial we will create a simple control panel for a device in the following steps:

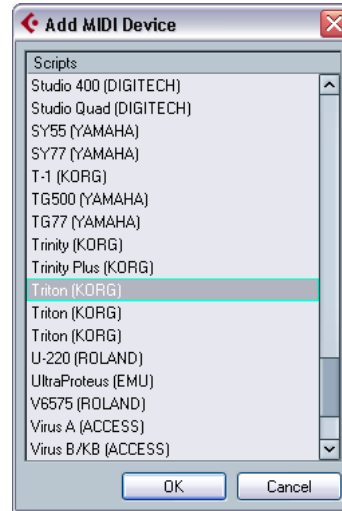
- “Installing a Device” on page 23
- “Adding a panel” on page 24
- “Adding a background” on page 24
- “Adding control objects” on page 25
- “Copying control objects” on page 25
- “Aligning control objects” on page 26
- “Defining parameters for control objects” on page 26
- “Adding more background elements” on page 27
- “Adding control objects – faders” on page 28
- “Adding control objects – switches” on page 28

- “Testing the template and exiting the panel dialog” on page 29
- “Using the new device panel in the Inspector” on page 29

## Installing a Device

1. Open the MIDI Device Manager window, and click the Install Device button.

Here you can choose from a list of pre-defined devices, or define a custom device. In this example we will use a Triton (Korg) preset.



2. Once you have installed the Triton (Korg) device, select it by clicking on its name in the Installed Devices list and click Open Device.

Now you will see the Device structure to the left of the window.

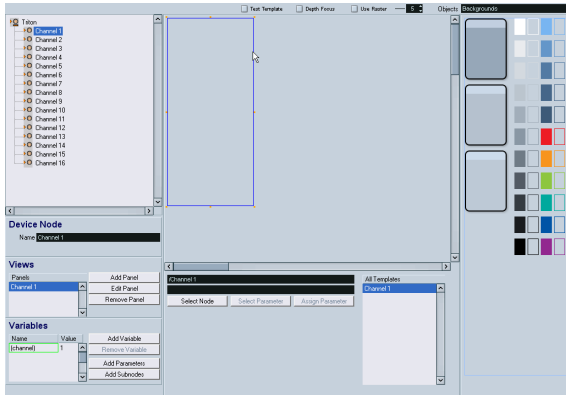
## Adding a panel

In this example, we will select Channel 1 to add the panel.

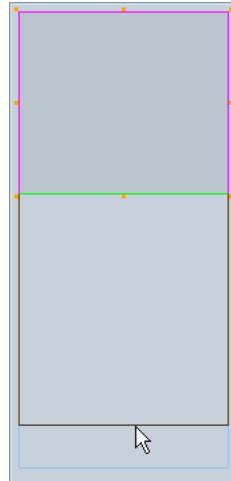
1. Select the Channel 1 node and click the Add Panel button.

Now you can set a size for the panel – see [“The Add Panel Dialog” on page 18](#) for details.

2. For this tutorial, select “Inspector size” and click OK. The main Panel Edit window will now open. The blue rectangle is the panel edit area.



2. Stretch this background so that it covers the entire panel area.



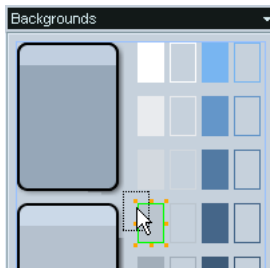
All objects, both backgrounds and other, can overlap. By right-clicking (Win)/[Ctrl]-clicking (Mac) the object you can bring up a context menu with the items “To Front” and “To Background”. If you select an object and then select “To Front”, it will become the foremost object (while “To Background” results in the opposite). This is useful when you’re dealing with backgrounds, labels and controls sharing the same panel space.

Now that the panel has a background, we can move on to control objects.

## Adding a background

Now you can begin adding objects to the panel. Let’s start with a suitable background. Backgrounds are selected from the area to the right of the edit area.

1. Drag a background object into the blue rectangle (in the edit area) and release the mouse button.

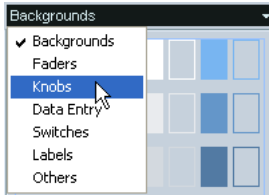


Once an object is selected you can adjust its size to your liking using the resize handles.



## Adding control objects

1. Select “Knobs” from the Objects pop-up menu. This brings up an assortment of rotary knobs.



2. Select one and drag it into the panel.

Once you have dropped a control into the edit area, the Control Parameter Assignment dialog will open. In this window you can define the parameters and other data pertaining to the control.

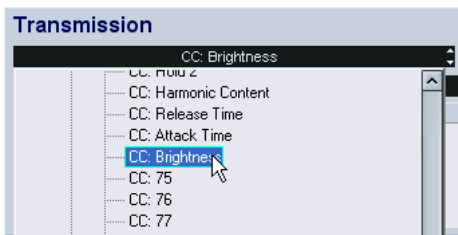
3. Click the Create button in the bottom left corner.
4. Enter a name.

Note that this is not the name of the control object itself, but the name of the actual parameter, an item which exists independently from objects. A logical and intuitive naming convention will help!

Now it's time to select the control change (CC) number in the Transmission field. At this point it may be required to consult the MIDI Implementation Chart of the device you're creating the panel for.

In the case of Korg Triton, we find that LPF Cutoff corresponds to control change 74, “CC: Brightness”.

5. Select Brightness from the Transmission pop-up menu.



6. At this point we're done with the Parameter window, so just click OK.

7. If the knob type you have chosen has a text label, you can edit this by double-clicking on the label under the knob. Enter an appropriate title in the window that appears.



Now the knob is finished, and we can use it as a starting point for additional knobs.

## Copying control objects

1. Select the knob and select Copy from the Edit menu.
2. Select Paste from the Edit menu to paste in another instance of the knob.

A pasted object will be placed at the same coordinates as the original object. Use the arrow keys or the mouse to move the new knob to an empty space.

Since the new knob needs a different name and a different parameter assigned to it, we need to do some editing:

3. Double-click on the copied knob to open the Parameter window.

Here you will notice that the assigned parameter is LPF Cutoff (the only parameter we've created so far).

4. Click the Create button again to define a new parameter, “Resonance”.
5. Enter this name in the Parameter name field.

According to the Triton MIDI Implementation Chart, Resonance corresponds to controller 71 (CC: Harmonic Content).

6. Select controller 71 (CC: Harmonic Content) from the Transmission pop-up menu and click OK.

7. Double-click on the name label to edit the label text.

8. Enter “Resonance” and click OK.

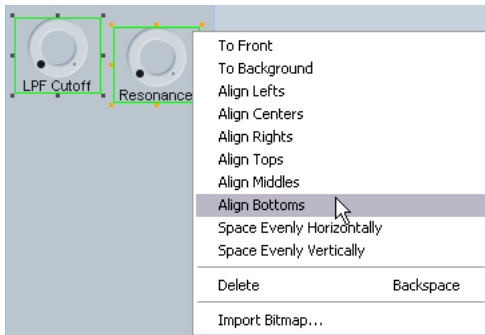
Done! Now you have two knob controls with different parameters assigned to them.

## Aligning control objects

You may find that the knobs aren't properly aligned, horizontally and/or vertically. The Panel Editor can assist you with this.

1. Press [Shift] and click on both knobs to select them.
2. Right-click (Win)/[Ctrl]-click (Mac) to open the context menu, and you will see a range of alignment and spacing commands.

In this case we're interested in vertical alignment, so we'll choose Align Bottoms.



Now the bottom edges of the two objects are aligned vertically.



## Defining parameters for control objects

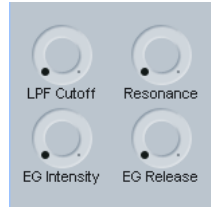
We're going to create two more control knobs, but this time we'll define the parameters first. As stated earlier, parameters exist independently from objects and can be created in a separate process, which is useful when you have the MIDI Implementation Chart in front of you anyway.

In the main window of the Editor, below the Device "tree" (known as the Device structure), you'll see an area called Variables. In this area you'll find the Add Parameters button.

1. Click the Add Parameters button to open the Parameter window and create two new parameters, "EG Intensity" (CC 79) and "EG Release" (CC 72).

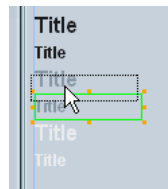
2. When you're done, duplicate the two existing knobs and place the copies in an empty space. Double-click on the title to enter the correct parameter name, then double-click on the control to assign the parameters that you created before.

You can select multiple knobs and use the alignment and spacing commands to get all the controls in neat and tidy rows and columns.



These four knobs are known as "Realtime Controls A" on the Korg Triton. It might be a good idea to add a title object to this group, for easy identification.

3. Switch to Labels on the Objects menu, pick a title object and drag it to the edit area.



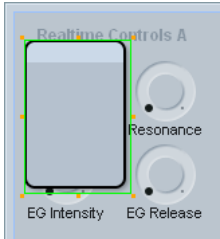
4. Double-click on it, enter "Realtime Controls A" in the text dialog and click OK.



It's starting to look good, but perhaps we should add some kind of frame around this group of controls to distinguish them from others.

## Adding more background elements

1. Go back to Backgrounds on the Objects menu and drag one of the backgrounds to the edit area. Since the most recently added object automatically ends up on top of all others, we must rearrange the order here.

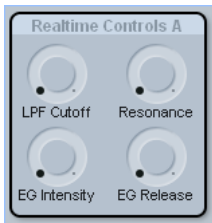


2. Select the object you just added, then right-click (Win)/[Ctrl]-click (Mac) to open the context menu.
3. Choose "To Background" – this will send the object to the back.

At this point the object is no longer visible, simply because it ended up behind the large grey Background that we added in the beginning.

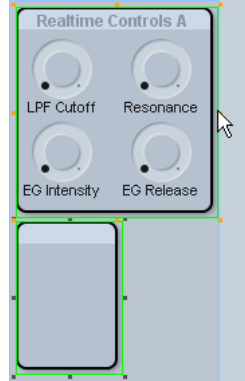
4. To solve this problem, click on the grey background to select it, then open the context menu again and select "To Background" once more.

Now the objects are in the correct order, and you can go on to resize the additional background so that it encompasses the title and the knobs.

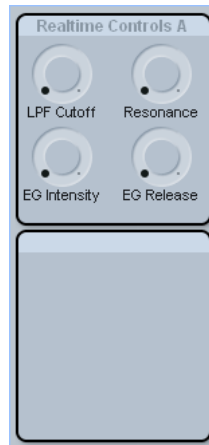


Now let's create a second group of controls.

5. Drag another background like the one we just added and drop it in the empty space below the existing group.



6. To make the new background the same size as the first one, press [Shift], select both objects and then use the resize handles of the original object. The second object will assume the same height and width as the first.



The obvious thing to do now is to make the second group "Realtime Controls B", but since we've gone over rotary knobs already let's try a few other Korg Triton controls.

## Adding control objects – faders

The Triton has a slider called “Value” (commonly known as a data entry slider), whose function is doubled by two buttons, increase and decrease. To mimic these controls we need a Fader and a Data Entry object.

1. Switch to Faders on the Objects menu, then drag and drop a vertical fader into the edit area. The Parameter window appears.

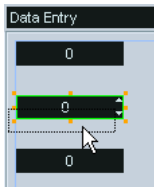
2. Create a new parameter called “Value” (CC 18, General Purpose 3).

To edit the “min” and “max” labels on the fader, double-click on each label and enter “0” and “127”, respectively.



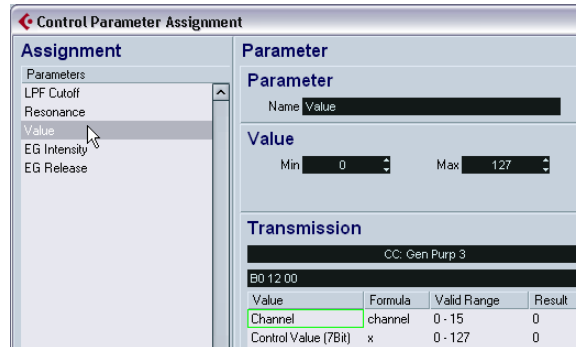
3. Select Data Entry from the Objects menu.

4. Pick one of the objects featuring up/down arrows and drag it to your panel.

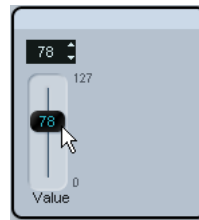


In the Parameter window that pops up, don't create a new parameter.

5. Instead, click on the previously defined parameter “Value” in the list and then click OK.



When the same parameter is assigned to two or more controls, the controls become linked so that when you move one of them, they all follow.



We're almost done. Let's add a couple of switches as well.

## Adding control objects – switches

1. Select Switches from the Objects Menu and drag a switch from the On/Off subcategory to the edit area.

Unlike faders, knobs and data entry objects, switches can only send two values. Normally, hardware controls that function like switches only respond to 0 and 127, or 0 and 64. The Min and Max values in the Parameter window correspond to the two alternate states (on/off) of the switch.

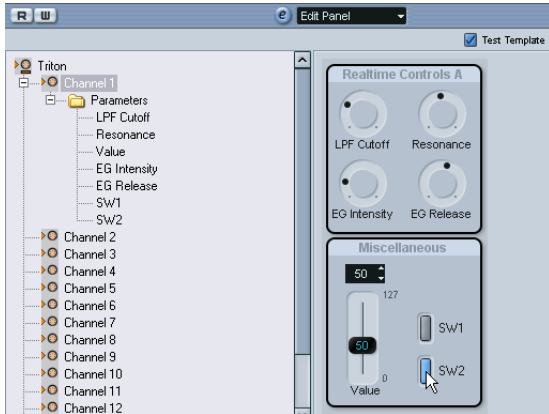
The Korg Triton's realtime controls SW1 and SW2 respond to CC 80 (General Purpose 5) and CC 81 (General Purpose 6), respectively.

2. Define the two parameters and assign them to the switches, SW1 and SW2.

Now we're nearly there, but before we might want to test it.

## Testing the template and exiting the panel dialog

1. Activate the test mode by checking the “Test Template” option at the top of the edit area.  
This will make the panel “go live” and transmit MIDI data over the output port when you move the controls.

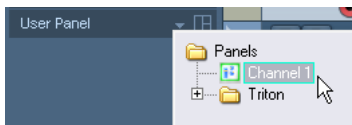


If everything appears to be functioning OK, we can consider the panel completed, and it's time to start using it!

2. Click the Exit button on the Panel Edit window, and click Save in the dialog that appears.

## Using the new device panel in the Inspector

1. To use the new panel in the Inspector, go back to the main Project window, create a MIDI track and assign its output to the device the panel was made for, i.e. Triton.
2. Now click the User Panel tab at the bottom of the Inspector. Click the button to open the device structure and choose the desired panel.



Done! Now the device panel is displayed in the Inspector and ready for automation recording.



## Advanced Panel handling

In the following section, basic knowledge of the Device and Panel windows is assumed. We also assume that you have followed the tutorial.

⇒ We highly recommend that you export the current device setup as a backup before moving on to advanced panel editing.

### Copying panel elements

Copying panel elements only copies the graphic panel elements, but not the parameters. This way, you can quickly copy a pre-designed panel to various subnodes and define the parameters afterwards.

⇒ There is one exception to the rule: If the panels belong to the same level of subnodes in the same device, the parameters will not get lost during the copy and paste.

Panel elements can be copied from the same device or from different devices.

Proceed as follows:

1. In the All Templates list, select the template (panel) you want to copy.

2. Select the panel elements that you want to copy and press [Ctrl]/[Command]+[C].

When selecting various elements with the mouse, it can happen that the order of the elements gets lost. To avoid this, select the complete panel with [Ctrl]/[Command]+[A] to preserve this information during copying.

3. Open another template (or add a new panel) for this or another device.

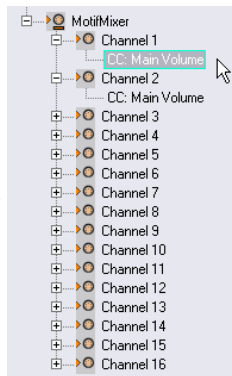
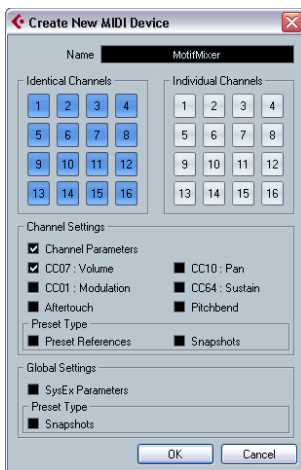
4. Paste the copied elements into the new template. Only the graphic elements are transferred. If you click on an element, the message "Not Assigned" will be displayed in the second text line below the Edit area.

## Creating complex panels

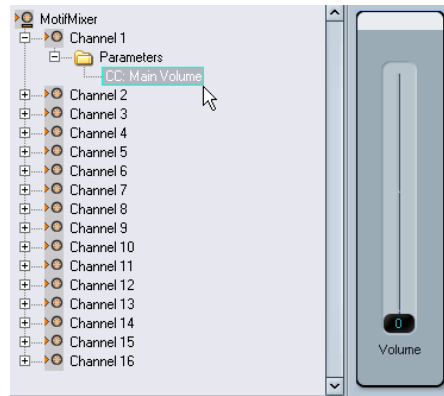
If you want to create a complex panel, it is useful to set up panels and parameters at channel (subnode) levels and then combine them in one large panel, instead of simply putting all parameters in one panel. (The parameters can always be moved to another subnode in the Device window, if necessary.)

## Creating subpanels

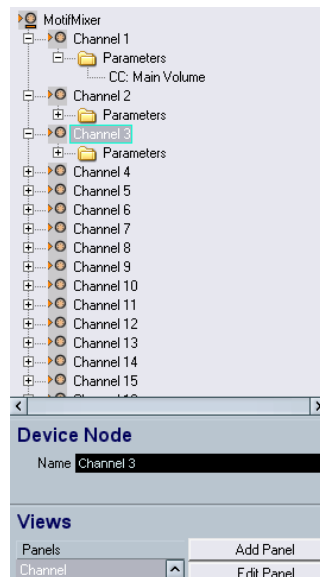
1. Let's start with a device called e.g. "MotifMixer" with 16 identical channels and the main volume as parameter.



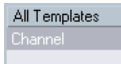
2. Add a channel strip panel with the name "Channel" to the first channel. To this, add a background and a volume slider and assign the parameter CC: Main Volume to the latter.



Since you have 16 identical channels, the panel now exists for every channel of the MIDI device, with the respective parameter assigned. To see this, click on the respective channel node – you will find that the Channel panel is available in the Views area of all channels.



The Channel panel is also listed under “All Templates”.

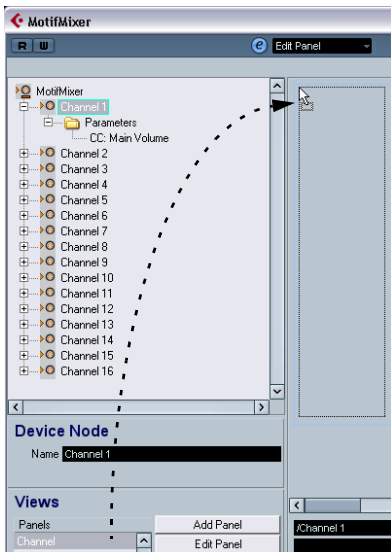


## Combining subpanels

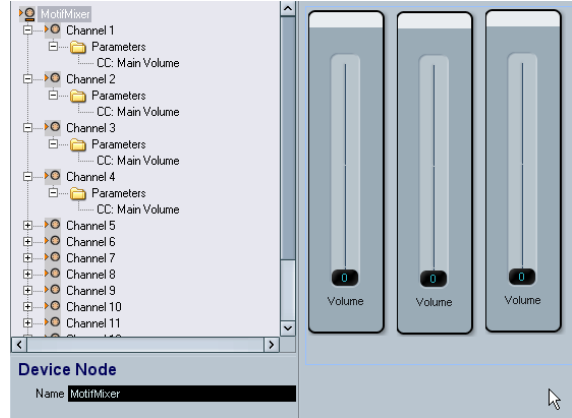
It is now possible to drag a subnode's panel from the Views area into the panel of a parent node, thus assembling a complex panel by referencing the subpanels.

1. Click on the node “MotifMixer” and add a new panel in general size.

Click on the node “Channel 1”, so that the Channel panel appears in the Views area. Click on this entry and drag it into the Edit area.



2. Repeat this for Channel 2 and 3 by dragging and dropping the Channel panel into the MotifMixer panel. This results in the following arrangement for the MotifMixer panel:



The MotifMixer panel now consists of three panels with volume faders for Channels 1-3. You can prove that the volume faders will work independently by activating “Test Template” and moving the sliders.

However, when you edit the parameters or the design of the Channel panel, these changes will be mirrored in all panels in the MotifMixer panel. Therefore, in contrast to “Copying panel elements” on page 29, combining subpanels preserves the panel design and all assigned parameters.

## Identifying the nodes and templates

- Click on a group of elements (green border) in the Edit area to see the assigned node, e.g. “/MotifMixer/ Channel 2” in the first text line below the Edit area.



- Click on a single element to see the name of the parameter, e.g. “CC: Main Volume”, in the second text line.

⇒ Editing complex panels is easier when you use the Depth Focus option, see “Depth Focus” on page 23.

## Combining subpanels of individual channels

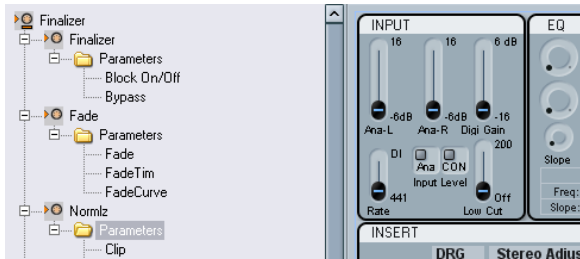
In the example above, we assembled a MIDI device panel by building only one panel for 16 identical channels. However, you often may want individual channels (nodes), each coming with its own panels and parameters.

A good example for this would be the TC Electronics Finalizer, which can be found in the factory panel configurations.

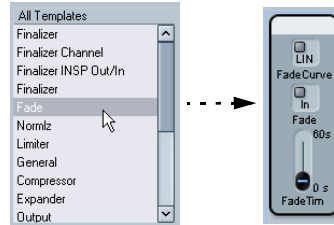


The Finalizer MIDI device panel.

Import the device and open it by clicking on the Edit (“e”) button. You can see that it consists of various nodes with different parameters.



The nodes correspond to templates (panels) of the same name. For example, click on “Fade” in the All Templates list to see only the Fade panel.



The main panel was again built by dragging and dropping the subpanels into the panel area of the main node, as explained above.

## Working with snapshots

### Choosing the right snapshot option

When you set up a new device as described under [“Defining a new MIDI device”](#) on page 11, there are two possibilities to set up snapshots.

- If the Snapshots option in the Channel Settings is selected, you can take a snapshot of every single channel. To verify if you can take snapshots of a single channel, select the MIDI device as output in the Inspector, choose a channel and click on the Open Device Panels button. If the snapshot list is not shown in the device panel window, the Snapshot option was deactivated.
- If the Snapshots option in the Global Settings is selected, you can take snapshots for all parameters (including Sysex messages and all channel settings, but only in one snapshot).

In this case, the Snapshot field is visible in the Device and Panel windows.

Examples:

- Global Snapshots on / Channel Snapshots off – you can take snapshots of the whole device, but not of a single channel.
- Global Snapshots on / Channel Snapshots on – you can take snapshots of the whole device and of each channel.

⇒ Both snapshots options can only be set during the first device setup, see [“The Create New MIDI Device dialog”](#) on page 12.



⇒ Therefore, even if you set up e.g. ten channels at first with the Snapshots option activated in the Channel Settings, once you manually add new channels, the Channel Snapshots option is always deactivated for those new channels.

If in doubt, select both snapshot options.

### Using snapshots

If you activated a “Snapshots” option during the setup of a new device (see [“Defining a new MIDI device”](#) on [page 11](#)), an additional list field appears on top of the Device and Panel windows, to the right of the Read/Write buttons.



Snapshots are much like presets but include the complete parameter settings.

- To store snapshots, click on the Plus button.
- To select snapshots, simply click the field to open the list of all available snapshots.
- To delete snapshots, click on the Minus button.

A useful case for snapshots is if you have a MIDI device with internal presets that cannot be changed from the outside. In this case, you can use snapshots to emulate the preset settings. Proceed as follows:

1. Define the parameters that are changed in the device presets within the program.
2. Build the corresponding panel in the Panel Editor and add the controls and parameters.
3. Activate the option “Test Template” so that you can set the controls to different values.
4. Set the controls according to the settings in the device presets.
5. Store the snapshot for every setting with a name corresponding to the preset in the device.

It is possible to arrange the snapshots so that you get a folder structure, see [“Snapshot XML files”](#) on [page 46](#).

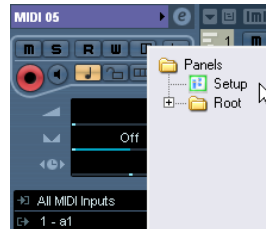
## Building panels for VST Instruments

It is also possible to build panels for internal VST instruments. The advantage of this is that instead of having an extra window for your VST instrument, you can custom-build panels for it and integrate them in the Inspector (see [“Device panels in the program”](#) on [page 14](#)).

You can edit your panel as usual, see [“About Device panels \(Cubase only\)”](#) on [page 14](#). The main difference is how to open the Panel window, as you can't simply install or import the VST instrument as a device. Instead, you have to start from the Inspector.

Proceed as follows:

1. In the Project window, add a new MIDI track.
2. Select a VST instrument as output, e.g. “a-1”. If there are no VST instruments available, open the Devices menu, choose the VST Instruments option and install an instrument.
3. Now, instead of a simple click on the Open Device Panels button to open the VST panel, press [Ctrl]/[Command] and click the Open Device Panels button. A “Panels” folder similar to the one described under [“Showing panels in the Inspector”](#) on [page 15](#) opens.



4. Select “Setup”.
- This opens a window similar to the Device window – however, no Device structure is displayed on the left side and only buttons for panel editing are available.
5. Click the Add Panel button to add a new panel.
- This opens a window similar to the Panel window. However, as the VST instrument and its parameters are pre-defined, you can only edit the panels, but can't add any new parameters or subnodes.
6. Now you can proceed with building a custom panel and assigning the existing parameters of the VST instrument as described in [“Assigning parameters”](#) on [page 21](#).

(Existing snapshots/presets for the VST instrument are also available from the pop-up list on top of the window.)

## Exporting and importing device setups (Cubase only)

Clicking the Export Setup button allows you to export your complete MIDI device setup as a separate XML file. The file can then be imported using the Import Setup button. This is useful if you move to another studio, install the program on a new computer, etc.

⇒ Exporting the setup will produce one XML file that includes all of your installed devices.

On how to export a single device, see [“Exporting a single device” on page 44](#).

⇒ When you import a stored setup with the Import Setup function, a dialog will appear, listing all devices included in the stored setup.

Select the device(s) you wish to import and click OK.

⇒ Importing will not overwrite any currently installed devices.

If the current list contains a device with the same name as a device to be imported, a number will be added to the name of the imported device.

## SysEx messages (Cubase only)

SysEx (System Exclusive) messages are model-specific messages for setting various parameters of the synth engine. This way, it is possible to address device parameters that would not be available via normal MIDI syntax.

SysEx messages are written in hexadecimal notation and have the following structure:

```
F0 31 20 2A ... F7
```

with F0 signalling the start and F7 signalling the end of the SysEx message, a number of arbitrary bytes in between. The second byte is the unique manufacturer ID as defined by the MIDI Manufacturers Association, while the next bytes often indicate the device and model ID.

If you want to define SysEx messages for a device, it is vital that you have the manual for the hardware device, which describes its MIDI definitions. Usually, these settings are described on the last few pages of the manual. If the MIDI definitions are not provided in the manual for your device, please see the manufacturer’s website for the necessary documentation or contact the manufacturer.

At various points it is necessary to convert hexadecimal numbers to decimals and vice versa, so you may need a translation-table or a calculator that is able to make this conversion. Under Windows, you can use the calculator found under Start/Programs/Accessories.

For information on how to dump SysEx messages as input from your MIDI device, please refer to the chapter “Working with System exclusive messages” in the Operation Manual. However, while the SysEx messages of your device can be recorded there, they can’t be transferred to the MIDI Device window, which is designed for MIDI output. There is no function like “midi learn” or “read all SysEx messages” in the MIDI Device window.

## How to set up SysEx messages in the program

There are two ways to set up SysEx messages:

- You can enter one SysEx message parameter per SysEx message given in the manual of your device. This might lead to a large number of parameters, e.g. 300.

- You can enter one SysEx message parameter per one common SysEx string by using definable values, see below. This will lead to less SysEx parameters and a more flexible design, but is a bit trickier to set up.

For more information, see [“Using definable values to set up a more flexible SysEx design” on page 36](#).

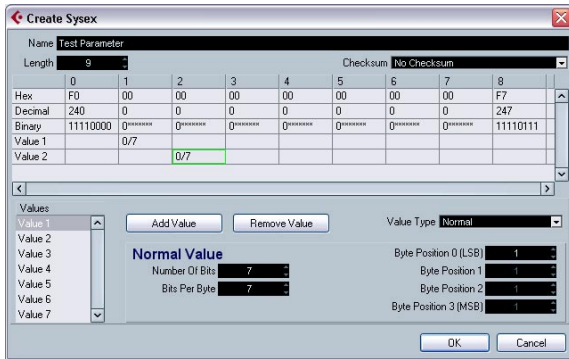
### Entering SysEx messages for devices

SysEx messages need to be entered as parameters in the Device window as follows:

1. Open the MIDI Device Manager.
2. Install the device JV-1080 Roland, for example.
3. Stay in the device mode, click on the root and then click on Add Parameter.

The Add Parameter window opens.

4. In the Transmission area, click on the Create SysEx button on the right of the Transmission list.



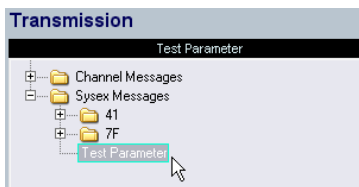
The Create SysEx window opens. As you can see, you can edit each byte on its own, in hexadecimal, decimal or binary – or assign a value to it.

5. Enter a new name for the parameter, for example “Test Parameter”, and click OK to return to the Add Parameter window.

In principle, this is how SysEx messages are set up. The tricky part is how to enter the correct values (see [“Input data for SysEx messages”](#) on page 35).

### Assigning SysEx messages to parameters

The available SysEx messages can be found on the bottom of the Transmission list in the SysEx messages section.



### Editing SysEx messages

It is not possible to edit SysEx messages once defined in the Device window of the program (only their definable values can be edited).

Unused SysEx messages will automatically be deleted when leaving the program.

## Input data for SysEx messages

Let’s have a closer look at the Create SysEx window.

- The Length is the length of the SysEx message in Bytes (counting each pair of numbers), for example 9:

F0 23 12 6B 10 02 11 0B F7

In this case, the bytes are numbered from 0 to 8 in the table. Of those 9 bytes, the first and the last are pre-defined by the MIDI protocol – this is why in the list of values on the lower left, only Value 1 to Value 7 are available for user definition instead of the nine expected ones.

- The Checksum option can usually be left at “No Checksum” except for Roland devices, where the C5 value is used as checksum. If you select this, only Value 1 to Value 6 will be left for user definition.

- Values that are in the list on the lower left are definable, e.g. can be used as variables. You can rename these values by double-clicking on them and entering a new name.

⇒ The important thing about values is that you can’t simply edit the white fields in the table, because the values are “definable” per default. This means that you can’t set them to static values unless you select a value and remove it from the list by clicking “Remove Value”. After this, you can edit the respective field in the table and enter a number.

If you want to enter a SysEx message with one variable, remove all values but one and enter the fixed values in the table according to the manual of your device.

After clicking OK, the remaining definable values will appear in the Value column of the Add Parameter window.

### A word about the Value Type

The Value Type can be “Normal” or “Generic”. In general, just leave it at “Normal”, which means that you are working with bytes. You will find an example for defining a double byte SysEx message in the section [“Using normal values \(Example\)”](#) on page 37. However, there are specific problems for which you need to manipulate the bits settings. This can be done with the Value Type “Generic”. For an example on how to define two values in one byte using generic values, please see the section [“Using generic values \(Example\)”](#) on page 37.

## Definable values as variables

The definable values (Var 1 and Var 2 in this example) are just that – definable as you like. This is done in the Formula column of the Add Parameter window.

Value	Formula	Valid Range	Result
Var 1	0	0 - 127	0
Var 2	x	0 - 127	0

You can enter parameters, mathematical formulas with or without parameters, and static values.

The allowed mathematical operations are

- “+” (addition)
- “-” (subtraction)
- “\*” (multiplication)
- “()” (parentheses, for small calculations)

⇒ Note that the values in the Formula column have to be entered as decimals!

Some examples for formula entries:

- “(2\*para5)”, where para5 is a parameter defined in the subnode.

The parameter definition can also be done after using it in the formula, you just have to ignore the error message at this point.

- “(1+P)”, where P is a multiple parameter defined in the Variable area of the Add Parameter dialog.

For this, check the Create Multiple Option, define a Variable Name “P” and a range from e.g. “1-10” and click OK. This way, you have a multiple parameter in your formula, which is helpful e.g. if you want to use the same basic SysEx message with variance in the parts (MIDI channels), see below.

- “11” as the decimal value of the “0B” function given in the manual of your device.

When you enter a decimal value as formula, check the resulting hexadecimal string above the table to make sure the entry is correct.

## Using definable values to set up a more flexible SysEx design

Using definable values with formulas allows for a more flexible SysEx definition because you can set up one common SysEx string for a whole set of SysEx messages. For this, look out for SysEx strings with minor differences in only a few bytes in your manual to define a common SysEx string.

Example:

F0 23 12 rr zz PT Fn XX F7

is a common SysEx string with

rr and zz = address map

PT = part (sometimes midi channel), 1-16 as decimals

Fn = function code, e.g. filter

XX = actual value x to be sent to the panel control

When you now keep these five bytes as definable and set the others to static values in the Create SysEx window, you can play around with the definable values in the Add Parameter window.

For example, as we learned above, it is possible to define the PT value as a formula like “(1+P)”, including a multiple parameter that allows for sending the same message to several MIDI channels at once.

However, if you want to send the message only to one channel, you can simply enter a defined value “P” for the PT value in the Formula column.

Therefore, while SysEx messages can't be edited after the first set up, definable variables allow for trial-and-error and can still be set to a defined value any time. This makes handling SysEx messages a lot easier.

## Using normal values (Example)

Sometimes, values higher than one byte are necessary to address something, e.g. sample numbers (Sample NR) from 0-255 (0000 xxxx to 0000 yyyy in binary).

In this case, the value x effectively consists of two bytes, called XX and YY here:

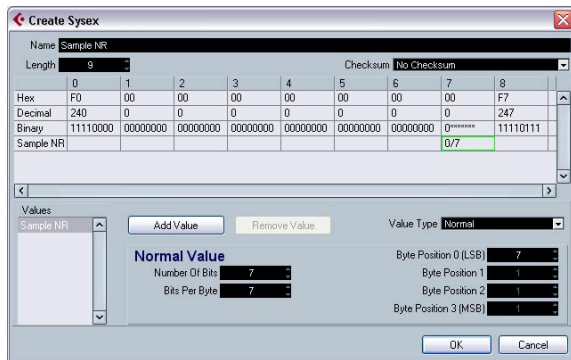
F0 23 12 6B PT Fn XX YY F7

These two bytes need to be set up so that they result in one value. For this, you have to change the settings for the Normal Value. Proceed as follows:

1. Define a new SysEx message for "Sample NR" with a length of 9.

This leaves us with initially 7 definable values.

2. Remove all values from the list except Value 7. (Byte 6 will be set up as a kind of swap byte to 7). Rename Value 7 to "Sample NR".



Let's take a look at the settings "Number of Bits" and "Bits per Byte" for byte 7.

The default is 7 "Number of Bits" to 7 "Bits per Byte".

This results in:

- 0/7 for byte 7 and a binary display of 0xxx xxxx

6	7
00	00
0	0
00000000	01111011
	0/7

When you change the "Number of Bits" to 8, you have a superfluous bit which cannot be put into this byte. Therefore, it is "swapped" to the byte in front of it.

This results in:

- 1/7 and a binary display of 0000 000x for byte 6
- 0/7 and a binary display of 0xxx xxxx for byte 7

6	7
00	00
0	0
00000000	01111011
1/7	0/7

In our example, we need the setting 0000 xxxx for both byte 6 and 7. Therefore, the correct settings are 8 for "Number of Bits" and 4 for "Bits per Byte".

This results in:

- 1/4 for byte 6 and a binary display of 0000 xxxx
- 0/4 for byte 7 and a binary display of 0000 xxxx

6	7
00	00
0	0
0000xxxx	0000xxxx
1/4	0/4

Since we set up the bytes in the correct sequence of XX YY, the resulting sequence of values is also correct, with byte 6 for the higher numbers XX and byte 7 for the lower numbers on the right. (If you wanted to change this sequence, you would have to change the Byte Positions values.)

When you return to the Add Parameters window, you can see "Sample NR" as a definable value with a range of 0-255 (as compared to the usual 0-127).

Transmission			
Sample NR			
F0 00 00 00 00 00 00 00 F7			
Value	Formula	Valid Range	Result
Sample NR	x	0 - 255	0

## Using generic values (Example)

Sometimes, a byte is used for two or more different messages, e.g. "0001 1111" with the last five bits used as on/off signal for five different, independent switches.

For this, you would have to use the option "Generic" as Value Type, with which you can define the usage of specific bits.

In the following example we want to define two independent values in byte 6:

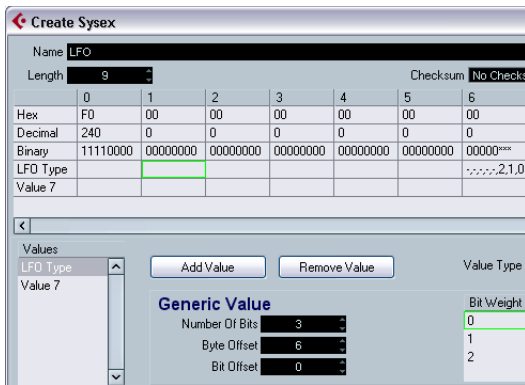
- The first value is "LFO Type" and uses the first three bits (the very first bit of every byte is 0 per definition, except for the start and end byte of the SysEx message).
- The second value is "LFO Phase" and uses four bits of the byte.

This has to result in a byte 6 structure of "0xxx xxxx".

Proceed as follows:

1. Create a new Sysex message of length 9. Remove all values besides 6 and 7.
2. Click on Value 6, rename it to "LFO Type" and set it to "Generic" as Value Type.  
So far, we have "0xxx xxxx" in the binary field, which corresponds to the "7" as Number of Bits. The Byte Offset is automatically set to "1".
3. To move the bits to the correct byte 6, set the Byte Offset to "6".
4. Since we want to use only three bits, set the Number of Bits to "3".

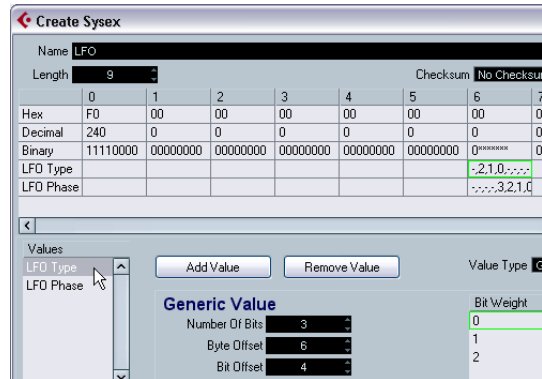
As you can see in the binary field, so far we have edited the second half of the byte.



5. Now proceed with Value 7. Rename it to "LFO Phase", set it to "Generic" as Value Type, reduce the Number of Bits to "4" and set the Byte Offset to "6" to shift the value to the same byte.

The two values now take up the same bits in the byte, as visible from the exclamation points in the binary field. Therefore, we have to move one of the values, e.g. "LFO Type".

6. Click on the Bit Offset and go up to "4".  
Now the byte has the binary content "0xxx xxxx" defined with two values.



7. When you click OK and return to the Add Parameters window, you can see that the variable "LFO Type" has a range of 0-7 (as available with three bits) and "LFO Phase" has a range of 0-15 (for four bits).

Transmission			
LFO			
F0 00 00 00 00 00 00 00 F7			
Value	Formula	Valid Range	Result
LFO Type	0	0 - 7	0
LFO Phase	0	0 - 15	0

⇒ Remember that you can edit the settings of a Sysex message only in the Create Sysex window. Afterwards, you can only edit the variables, but not the static bytes.

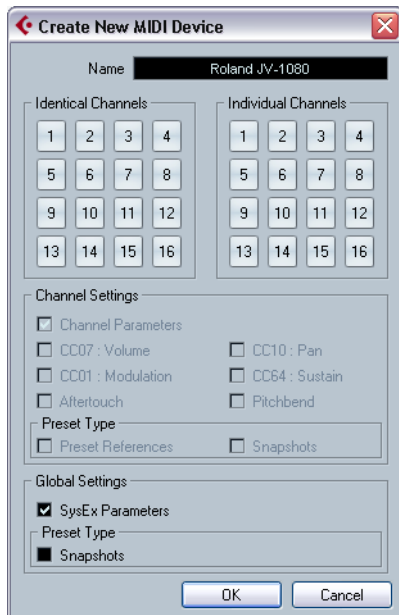
## Defining a SysEx device – a tutorial (Cubase only)

In this tutorial, we will define a new MIDI device that provides access to the parameters of a Roland JV-1080 in the following steps:

- “Creating a new MIDI device” on page 39
- “Creating subnodes” on page 39
- “Creating several subnodes at once” on page 40
- “Adding parameters” on page 40
- “Defining SysEx messages” on page 41
- “Editing the Formula” on page 42
- “Editing Scale Tune 1” on page 43
- “Adding parameters to another node” on page 43

### Creating a new MIDI device

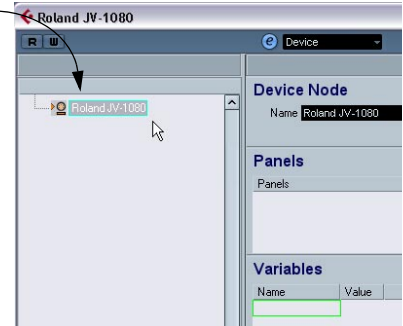
1. To create a new MIDI device, pull down the Devices menu, open the MIDI Device Manager and click on “Install Device”.
2. In the dialog that appears, select “Define New...” and click OK.
3. The Create New MIDI Device dialog appears. Set it up as shown in the following picture:



4. Click OK.

Now, the Device window will open with an empty Roland JV-1080 device displayed to the left.

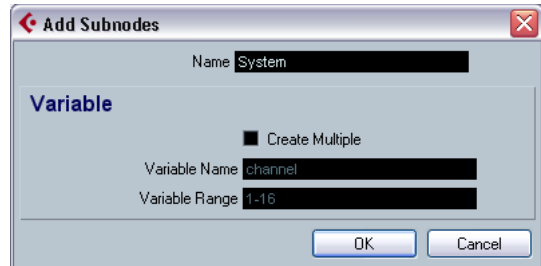
This is the “root” of the device, which stands for the device as a whole.



### Creating subnodes

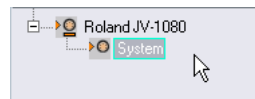
Now, you need to create subnodes (subsections) for the device.

1. Click the “Add Subnodes” button, and in the dialog that appears, enter “System” in the Name field.

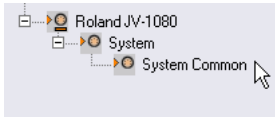


- “System” can be found as a separate table in the MIDI definition part of the JV-1080 manual. It’s almost always a good idea to create a separate device node for each table in the MIDI definition of a device.

2. When you click OK, the new subnode is added in the Device window.



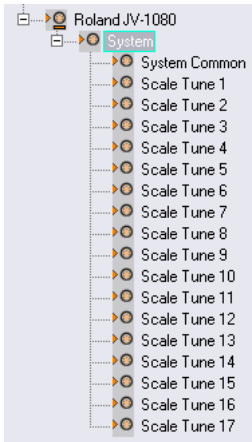
3. Repeat the two steps above to create the subnode “System Common”, which is also a separate table in the MIDI Definition section in the JV-1080 manual and is referenced by the “System” table.



### Creating several subnodes at once

The “System” table contains 17 references to another table called “Scale Tune”. So we need to add 17 more subnodes, but this time, we will proceed differently: we’ll create 17 similar subnodes at once.

1. Click the “Add Subnodes” button again. In the dialog that appears, enter Scale Tune as name, check the Create Multiple checkbox, enter “Part” as Variable name and set the Variable range to 1–17. When you click OK, 17 new subnodes are created:



The added subnodes all have a variable called “Part”, set to different “Values”.

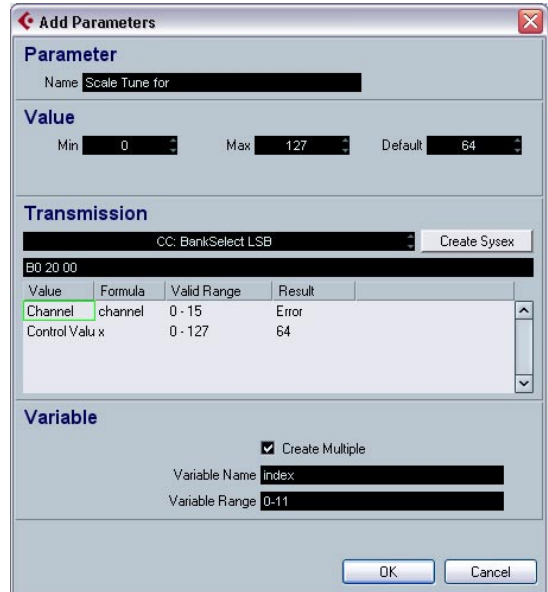
2. Rename the subnode Scale Tune 17 to “Scale Tune Patch Mode” (according to the System table) by selecting the node and entering the new name in the Name field. All of these “Scale Tune” nodes behave like alias copies in many aspects (this is described later).

### Adding parameters

1. Now you’ll create parameters for the “Scale Tune” nodes. Click the “Add Parameters” button.

The “Add Parameters” dialog appears.

2. According to the MIDI definition, the “Scale Tune” table contains 12 parameters. All of them are named “Scale Tune for XX”, where XX stands for the different notes in an octave. The parameter range of these parameters is from 0 to 127 and all are set to the default value 64. Fill in the Name, Min, Max and Default fields accordingly. Next, activate the “Create Multiple” checkbox and set the Variable Range to “0-11”, which is the address range of the 12 parameters.

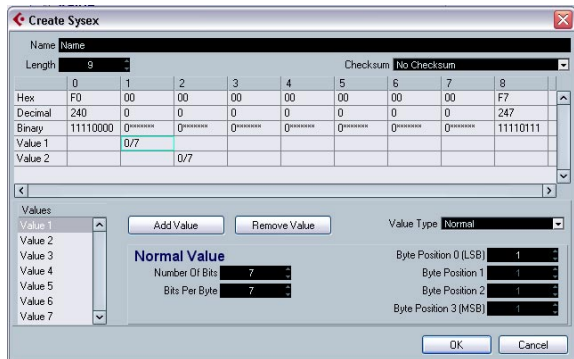




## Defining SysEx messages

Some devices can be edited by MIDI channel messages like Control Change, RPNs or NRPNs. In that case you'd only have to select the desired message by clicking in the MIDI message field next to the Create SysEx button and browse for it. But that is not true for the JV-1080. You need to define the MIDI sysex message that allows you to access these parameters, therefore:

1. Click the Create Sysyex button.



The Create Sysyex dialog.

In the MIDI definition part of the MIDI device's manual, you should be able to find sysex message definitions. Look out for messages that allow you to set individual parameters according to the tables mentioned earlier. In case of the JV-1080, you'll find this definition 1 or 2 pages before the tables. The message is called "Data Set1 (DT1)", which is a message that is used by many, if not all, of Roland's MIDI devices.

The next step is to translate this definition to the Create Sysyex dialog.

2. Type in "Roland JV-1080 DataSet1 7Bit" in the Name field and select "C5 Roland Checksum" from the Checksum pop-up menu.

Now the number of bytes necessary for this message have to be evaluated. Looking at the table in the JV-1080 manual, do not be confused by the entry "...". It means that it is possible to transfer more than one MIDI byte (7bit) in the message in one go by sending multiple data bytes. But right now you don't need this because about 99% of the

device's parameters are in the range of up to 128 states, which can be transmitted with one data byte. So if you count the bytes, when using only one data byte you get a count of 12.

3. Enter "12" in the Length value box.



⇒ It is important to set "Length" and "Checksum" at the beginning, otherwise you may need to do the additional steps again.

If you look at a sysex definition table, you'll notice upper and lower case letters in the Status column. Upper case letters stand for static hexadecimal numbers (indicated by the suffix "H"). Lower case letters stand for variable numbers that depend on the context. In the Create Sysyex dialog, "Values" are used for these variable numbers. For the static ones, there is no need for values, so you can enter the respective number.

All SysEx messages always begin with F0H and end with F7H, with an arbitrary number of bytes in between. This cannot be changed.

4. In our example, the first byte after that is "41H", which is static. Therefore, delete "Value 1" by selecting it and clicking on "Remove Value" and click in the position 1 field in the "Hex" row.

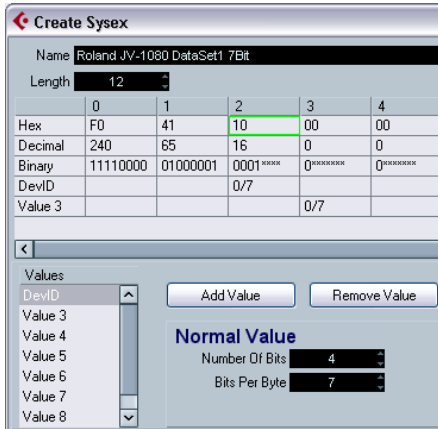
5. Enter "41".

You see that the number is automatically converted to decimal and binary format. You can also enter decimal or binary numbers by clicking into the appropriate rows.

	0	1	2
Hex	F0	41	00
Decimal	240	65	0
Binary	11110000	01000001	00000000
Value 1		0/7	

6. Next is the "device ID" which is a dynamic value (depending on what is set as the "device ID" in the receiving JV-1080). Double-click on "Value 2" in the Values list and rename it to "DevID".

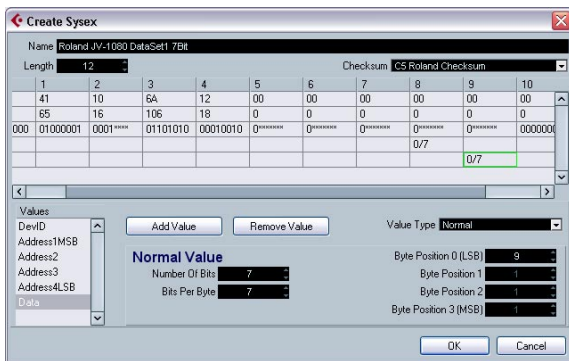
7. Reduce the number of bits to “4” and enter “10” in the Hex row at position 2, because the device ID ranges from 10H to 1FH.



8. Next, remove Value 3 and Value 4 and enter the right values (6A and 12) in the Hex row.

9. Finally, rename Values 5 to 9 according to the Sysex definition table. For this, double-click on each value name and enter the new name.

The dialog should now be set up like this:

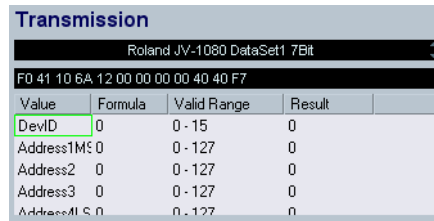


10. Click OK.

All the values that have been defined now appear in the Add Parameters dialog and can be assigned to a so called “Formula”.

## Editing the Formula

1. Click in the Formula column for the DevID and enter “DevID”, to set this value to a variable called “DevID”.

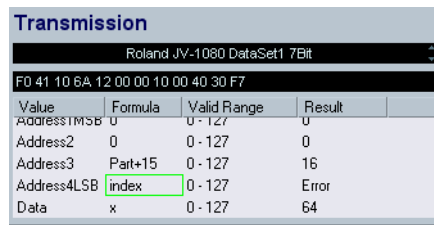


As there is no “DevID” variable defined yet, you get “error” as a result. For now, this can be ignored. We will define the “DevID” variable later.

2. Now you need to set the right addresses. In the Scale Tune table of the manual, “Address1MSB” and “Address2” are set to 0 for all parameters of the “Scale Tune” nodes. Therefore, leave them as they are: already set to 0. “Address3” indicates the part which is affected by each Scale Tune and ranges from 10H to 20H. Remember: you created the 17 Scale Tune nodes by using a variable called “Part” which ranged from 1–17, so if you add 15 to this “Part” variable, you get the desired range of 10H–20H, which is 16–32 in decimal. To achieve this, simply type in “Part+15” in the “Formula” column for “Address3”.

3. Finally, enter “index” in the Formula column for “Address4LSB” because this variable will be used to create multiple (12) parameters at once, as set in the “Variable” section of the “Add Parameters” dialog. Again, “error” is displayed in the Result field, because there is no such variable defined yet. In fact “index” is no real variable, because it simply will be replaced by each of the values in the defined range after completion of the dialog.

The dialog should now be set up as follows:



As you may have noticed, the variable “x” is automatically assigned to the “Data” value. “x” stands for the value that is represented by this parameter and is always defined individually by each parameter. If you later assign a control like a fader to this parameter, this fader will control and modify “x”. “x” is automatically assigned to the last value of the message, but can be freely assigned to any other value.

4. Click OK to close the dialog.

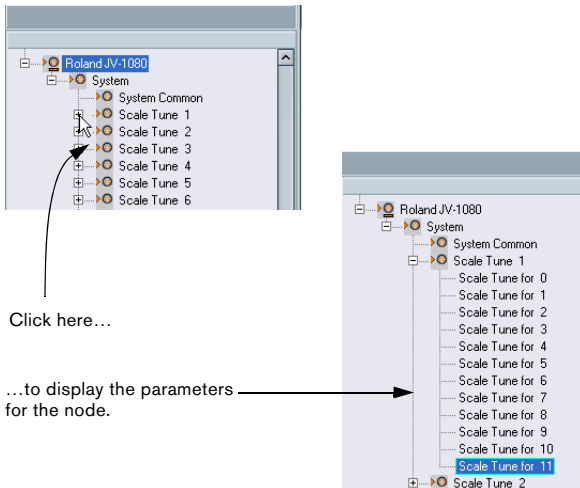
In the Device window, small plus symbols are now displayed next to the Scale Tune nodes, indicating further content.

Before looking into these nodes, you should add the missing “DevID” variable to the root of the device, because this is a global value that affects the device as a whole.

5. Select the “Roland JV-1080” node, click the “Add Variable” button and rename it to “DevID”. Normally, you can keep the default value setting of “0”, except if your hardware device is set to another value.

## Editing Scale Tune 1

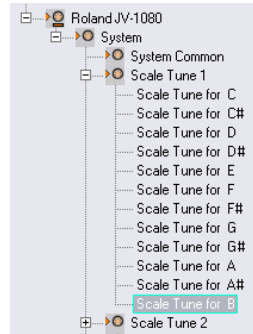
1. Let’s look into the Scale Tune 1 node by clicking its plus symbol.



You can now browse the parameters to verify that the correct MIDI messages are transmitted. You can of course also do this for any of the other nodes.

2. The next step is to rename the parameters according to the “Scale Tune” table of the device’s manual by selecting each of the 12 parameters and entering their correct name in the “Name” field.

Now, the parameters should be displayed as follows:

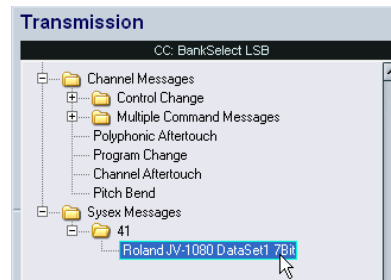


▪ If you open any of the other Scale Tune nodes now, you’ll see that the names of the parameters have also changed. This is what was meant by “alias copies” in the beginning. Furthermore, you will notice that if you add a panel to one of the Scale Tune nodes (see “About Device panels (Cubase only)” on page 14), it will be added to all of them, making it much easier to create panels with repeating sections.

## Adding parameters to another node

1. Now you need to add parameters to another node, “System Common”. In the list to the left, select “System Common”.

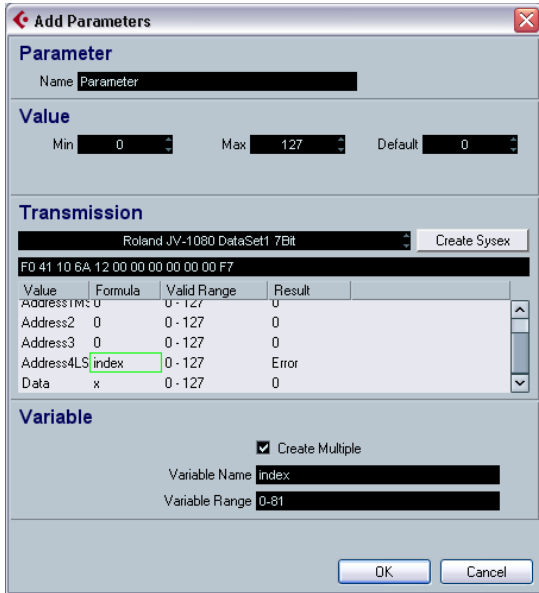
2. Click the Add Parameters button and select the Sysex message “Roland JV-1080 DataSet1 7 Bit” you created earlier.



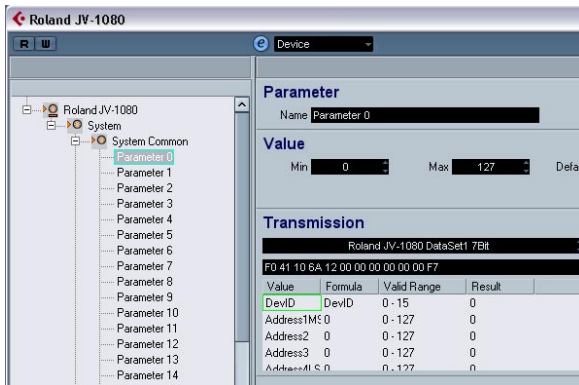
3. Now set up the DevID as described before.

4. Activate the Create Multiple checkbox and enter a range of 0–81, because the System Common table in the manual of the JV-1080 contains 82 parameters, starting with an index of “0”.

Address1MSB, Address2 and Address 3 are all 0 for all System Common parameters, so leave them as they are. Enter “index” in the Formula column for Address4LSB to address each of the 82 parameters separately. The dialog should now look like this:



When you click OK, you will notice that 82 new parameters have been added to the System Common node.



You can now set the Names, Min, Max and Default values for each of the parameters according to the specifications in the System Common table, as described earlier.

You should now be familiar enough with the basic procedures to continue with other parameter settings and adjustments and to finally create your own specific devices.

## Important files

⇒ For information about in which folders the files are stored, see the section “Where are the settings stored” in the Customizing chapter of the Operation Manual.

## Device setup XML files

Device setup files as well as panel definitions and other configuration files are saved as XML. These XML files can be opened in text editors or some browsers, e.g. the Internet Explorer.

Device setup files can be imported and exported by using the corresponding buttons in the MIDI Device Manager.

## Exporting a single device

As the button “Export Setup” generates an XML file over all installed devices, you have to use a little workaround to export a single device setup:

1. Export all installed devices as backup.
2. Remove all installed devices that you don’t want to export right now.
3. Export the last device again under another file name. This creates a file for this device only.
4. Import the first backup again to get back all installed devices.

## Excerpt from a Device XML file

Yamaha XG Drum FX.xml

```
- <MidiDevices>
- <list name="Devices" type="obj">
- <obj class="PMidiParameterDevice" ID="235085448">
  <string name="DeviceNode Name" value="XG Drum FX" />
  <string name="ClassName" value="Midi Device" />
  <string name="IDString" value="XG Drum FX" />
- <list name="Children" type="obj">
  - <obj class="PMidiDeviceNode" ID="237690088">

</list>
<bin name="Mask">F0FF43FF10FF4CFF02FF01FF2BFF0080F7FF</bin>
</obj>
</MidiDevices>
```

The code has to end with `</MidiDevices>`, otherwise it is incomplete and cannot be imported.

The value of the variable "DeviceNode Name" is the name of the device given in the Installed Devices List.

Object classes have unique IDs, which are important in case you want to merge XML files (see below).

### Editing the device setup XML files directly

It is possible to "merge" XML files, e.g. in these cases:

- You have created a panel for a device and now want to add the patch banks from another patch name script.
- You have created a MIDI Device from a patch name script. Then you want to add a panel, but new parameters appear only in one channel node and not across all 16 channels, because the default setup during import is set to individual channels.

The general approach is:

- Generate two device setups that differ mainly in one aspect (e.g. patch bank details).
- Compare the two files.
- Create a combination of the two device setups.

For example, what you would have to do for the second case is the following:

1. Open the original device (without identical channels), note down the patch banks and their structure, and export the device setup.

2. Create a new device with 16 identical channels, rebuild the main patch bank structure and export the device setup.

This leaves you with two files, so that you can copy the patch banks from the original file into the new file.

3. Compare the files and copy all original patch bank contents into the new file. Take care that you use the unique IDs from the new file, not the ones from the old file.

## Panel XML files

Panels are saved as an XML file of their own, with a name consisting of:

`<device name><unique combination of letters and numbers>.xml`

To save the panel file, you need to leave the Panel Editor, at which point you will be asked if you want to save the panel file.

⇒ Note that the panel file can't be saved under another name.

### Excerpt from a panel XML File

```
<template name="[0E8A23DBEA1611D898A1000A95B6C58A]Access VirusC" size=
<decor size="-54,-1,815,463" style="solidirect" bgcolor="#191B1
<view name="[0E8A235EEA1611D898A1000A95B6C58A,0]" [0E8A3845EA161:
<view name="[0E8A235EEA1611D898A1000A95B6C58A,0]" [0E8AA448EA161:
<decor size="289,11,70,287" style="framerect" bgcolor="#EBC5CE
<control class="Specificknob" look="C" size="312,40,33,33" sty
<control class="Specificknob" look="C" size="312,103,33,33" st;
<control class="Specificknob" look="C" size="312,166,33,33" st;
<control class="Specificknob" look="C" size="312,229,33,33" st;
<view name="Group" size="311,76,54,12">
  <font name="tinylabel" size="12" color="#E9EBEE">
    <label size="0,0,54,12" title="osc BAL"/>
  </font>
</view>

  <control class="Specificknob" look="A" size="9,0,3:
  <label size="0,35,50,8" title="Panorama" just="cer
</view>
</template>

<resources>
<bitmap name="Virus Logo" path="Virus Logo.bmp"/>
</resources>
<header/>
<scheme/>
<scripts/>
```

The device name is given in the first row.

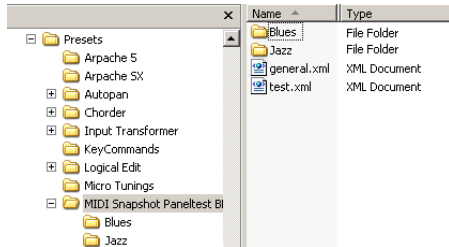
Bitmaps are included with the tag <resources>, in this example the Bitmap "virus LOGO.bmp".

Controls have their own tags <control class>. Templates are encoded in sections that are tagged with <template>.

## Snapshot XML files

Snapshots are saved as separate XML files under the specified name, e.g. "Blues.xml".

You can arrange the snapshot files in subfolders.



Example for Windows

This way it is possible to e.g. rebuild the preset structure of your device, which results in a corresponding folder structure in the snapshot list.



⇒ To make this structure visible in the Snapshot list, you have to restart the program.

## Patch name script text files

Patch name scripts are .txt files that e.g. are generated by the additional tool "Steinberg Scriptmaker". In them, the banks and patches of a device are encoded.

Excerpt:

```
[cubase parse file]
|[parser version 0001]
|[comment]                                created by PatchEdit

|[creators first name] Henryk
|[creators last name] Jaenisch
|[device manufacturer] Access
|[device name] Virus A
|[script name] Virus-A
|[script version] Version 1.00

|[define patchnames]
|[g1] Multi-Bank
|[p2, 0, -1, -1] Sequenzer
|[p2, 1, -1, -1] Play K
|[p2, 2, -1, -1] Scream RP
|[p2, 3, -1, -1] Arpeggi RP
|[p2, 4, -1, -1] AnnoSwe RP
```

⇒ The variable "device name" is the one that will show up in the list of devices (with the manufacturer in brackets behind it).

Patch name scripts are the files that are installed when you choose "Install Device" in the MIDI Device manager.

If you want to make new patch name scripts / devices available, you have to copy the files into the right folder, so that the program will find them (see the section "Where are the settings stored" in the Customizing chapter of the Operation Manual).

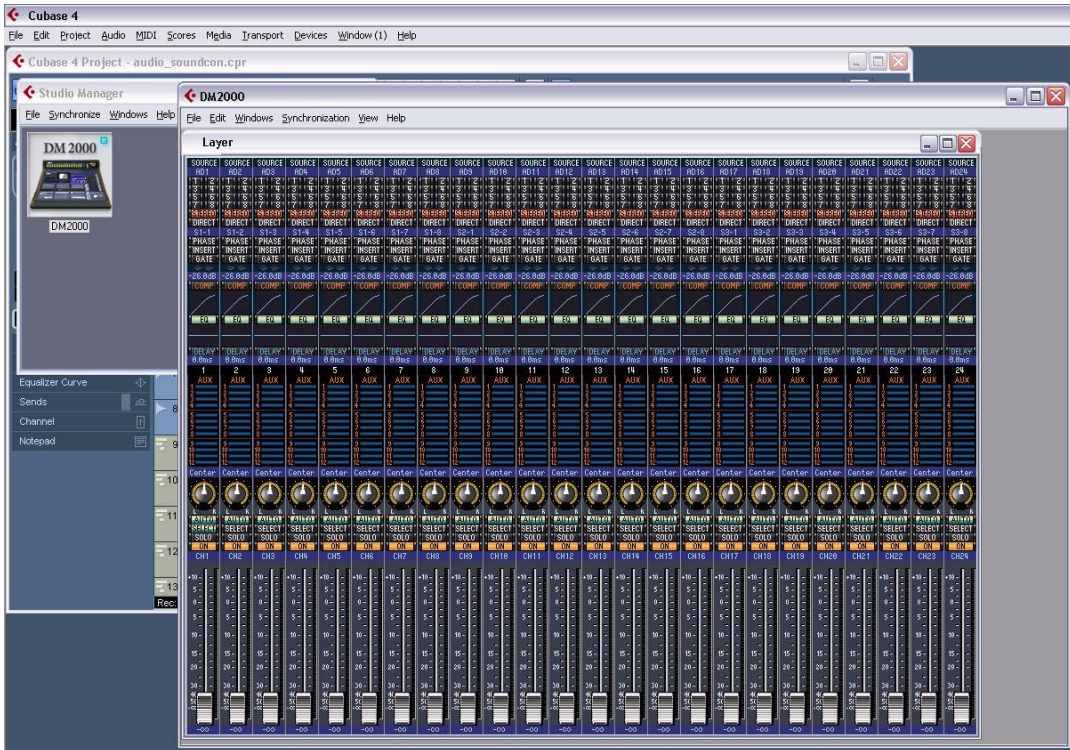
For better overview, the patch names scripts delivered with the software are sorted in folders by manufacturer.

For further information about the patch name script structure, check out the file "script documentation.txt" in the Patchnames folder.

⇒ Note that once a patch name script is installed as a new device, manual changes in the original text file will not be reflected in the installed device within the program. You have to install the script again to update the device information.



# About Studio Connections (Cubase only)

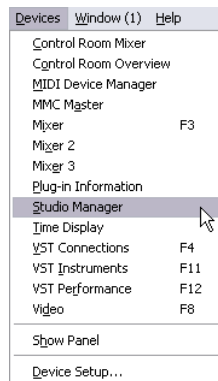


Studio Connections is the name of an initiative led by Steinberg and Yamaha. The initiative intends to create industry standards for totally integrated system environments using software and hardware products.

First implementation stage of the Studio Connections open standard is the integration and support of Yamaha's Studio Manager 2 (SM2) and Total Recall for compatible hardware devices.

For further information about Studio Connections, please visit the website <http://www.studioconnections.org>.

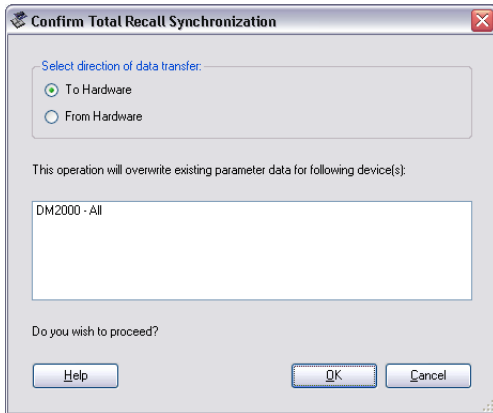
If you have a SM2 component installed, there is an additional menu item in the Devices menu.



## Total Recall

Total Recall means that you can save and recall all settings of your hardware and software products by opening one integrated file in a DAW such as Cubase or Nuendo. Also you will have instant and organized access to hardware editors.

When you load a project or switch to another active project that contains SM2 data, the Total Recall Synchronization dialog appears:



This dialog can also be opened any time from the Studio Manager's Synchronize menu. Click OK for the Dump to start.

## Virtual MIDI Devices

If you have a new OPT component (e.g. the DM2000) which uses a new special interface, you can access these components as virtual MIDI Devices in the MIDI track's output routing (if the output of the OPT is configured).

When a MIDI Track is routed to such a device, the “Open Device Panels” button becomes available.



Click the Open Device Panels button...



...to open the editor window for the device.

⇒ Please also refer to the separate documentation for the Studio Manager 2 and the OPT components.



**Index**

## B

Bank Assignments [8](#)  
Bank Select [6](#)

## C

Control Parameter Assignment [21](#)  
Copy  
    Panel elements [29](#)  
Create Multiple option [13](#)  
Create new MIDI channel [13](#)

## D

Definable values [36](#)  
Device panels  
    About [14](#)  
    Edit windows [17](#)  
    Editing [20](#)  
Device Setup XML File [44](#)  
Device structure [17](#)  
Device window [17](#)  
Double value Sysex message [37](#)

## F

Formula [36](#)

## I

Identifying nodes in panels [31](#)  
Import bitmap [22](#)

## M

Mathematical operations in formulas  
[36](#)  
MIDI Device Manager [6](#)  
    Device window [17](#)  
MIDI devices  
    Defining new for patch selection  
        [11](#)  
    Editing patches [9](#)  
    Installing [7](#)  
    Selecting patches [9](#)

## N

New MIDI channel  
    Create Multiple [13](#)

## P

Panel  
    Creating [20](#)  
Panel XML File [45](#)  
Panels  
    Complex editing [30](#)  
    For VST Instruments [33](#)  
Patch Banks [8](#)  
Prg field [9](#)  
Program Change [6](#)

## S

Snapshots [32](#)  
Studio Connections [47](#)  
Studio Manager [47](#)  
Subpanels  
    Combining [31](#)  
    Creating [30](#)  
Sysex  
    Assign message [35](#)  
    Double value message [37](#)  
    Edit message [35](#)  
    Value type [35](#)  
Sysex device  
    Creating [34](#), [39](#)  
Sysex Messages [34](#)

## T

Transmission [21](#)

## V

Variables [18](#)

## X

XML files  
    Device Setup [44](#)  
    Panel [45](#)