



Main Features

- This is an electronic percussion pad that you can strike with drumsticks or your hand, or step on with your foot.
- Even beginners can easily modify sounds just by intuitively turning knobs.
- The compact design won't get in your way, and you can attach the unit to a commercially available percussion holder for use.

Panel Descriptions

Top Panel

Sounds knob

Selects sounds. Turn the knob to switch sounds. Press the [INST VARIATION] button to select a variation for each sound.

For details, refer to "Sound List."

- * Sound is not heard while you're switching sounds (while the indicator is blinking).
- * Sounds knob position "12" lets you import and play an original sound that you created. For details, refer to the "Supplementary" manual at the following URL.
<http://www.roland.com/manuals/>

[TUNING] knob

Adjusts the tuning (pitch) of the sound.

Turning left	Lowers the pitch.
Turning right	Raises the pitch.

[FX] knob

Two types of effect can be applied depending on the position of the knob.

ELECTRO (SPD-1E) / PERCUSSION (SPD-1P)	
Turning left	Increases the amount of reverb.
Turning right	Increases the amount of delay.
Center	No effect is applied.

KICK (SPD-1K)

Turning left	Increases the amount of reverb.
Turning right	Increases the amount of distortion.
Center	No effect is applied.

[VOLUME] knob

Adjusts the volume that's output from the OUTPUT (MONO) jack and PHONES jack.

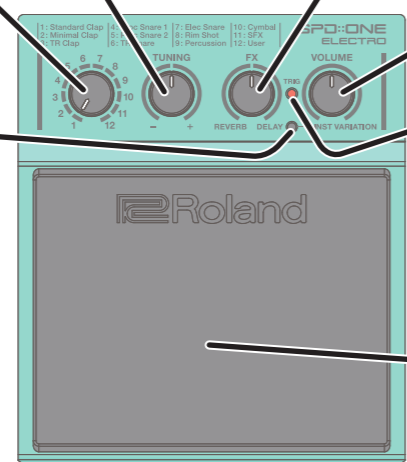
[INST VARIATION] button

Selects a variation for each sounds.

- * The way in which the TRIG indicator blinks when you press the [INST VARIATION] button shows whether the normal sound or the variation sound is selected.

Number of blinks	Sounds
Once	Normal
Twice	Variation

- * Pressing the [INST VARIATION] button stops the sound.
- * Pressing the [INST VARIATION] button does not change the sound for the user sample that you imported into the "12" position of the sounds knob.



TRIG indicator

The indicator lights when you strike the pad, and also shows the power on/off status and the remaining battery capacity.

When power turns on	Blinking → Dimly lit
When power is on	Dimly lit
When switching sounds (busy)	Blinking
Pad strike	Lights when struck
Low battery	Remains blinking

Pad

To produce sound, use drumsticks or your hand to strike this, or step on it with your foot.

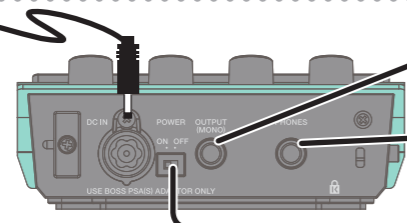
* The illustration shows the ELECTRO (SPD-1E).

Rear Panel

DC IN jack

Accepts connection of an AC Adaptor (PSA-S series; sold separately). By using it, you can play without being concerned about how much battery power you have left.

- * Use only the specified AC adaptor (PSA-S series; sold separately), and connect it to an AC outlet of the correct voltage. Do not use any other AC adaptor, since this may cause malfunction.
- * Insert the tip of the plug all the way into the jack.
- * If the AC adaptor is connected while a battery is installed, the power supply is drawn from the AC adaptor.
- * We recommend that you keep batteries installed in the unit even though you'll be powering it with the AC adaptor. That way, you'll be able to continue a performance even if the cord of the AC adaptor gets accidentally disconnected from the unit.



OUTPUT (MONO) jack

Connect your amplified speakers or mixer.

PHONES jack

Connect stereo headphones.

[POWER] switch

Turns the power on/off.

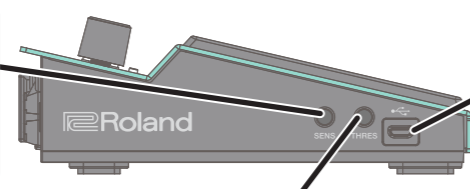
- * Before turning the unit on/off, always be sure to turn the volume down. Even with the volume turned down, you might hear some sound when switching the unit on/off. However, this is normal and does not indicate a malfunction.

Side Panel

[SENS] knob

Adjusts the sensitivity of the pad.

Turning left	Lowers the sensitivity.
Turning right	Raises the sensitivity. (Even soft strikes produce loud sound)



[THRES] knob

Adjusts the minimum sensitivity (THRESHOLD) of the pad so that it responds only when struck with at least a certain amount of force.

- * For details on how to adjust this, refer to "Tips for Use."

Turning left	Lowers the minimum sensitivity.
Turning right	Raises the minimum sensitivity. (Responds only when struck strongly)

USB cable (micro-B type)

You can use a micro-USB cable to connect this unit to your computer, and send and receive MIDI data.

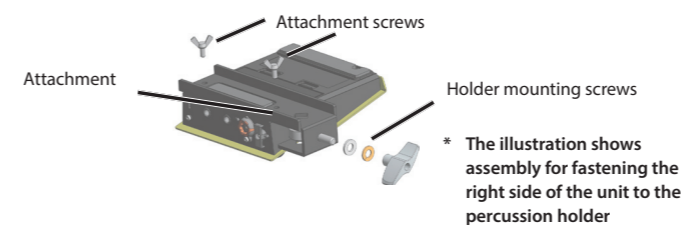
- * Take care that your strikes do not damage the cable.
- * Do not use a micro USB cable that is designed only for charging a device. Charge-only cables cannot transmit data.

Mounting This Unit on the Stand

If you want to mount this unit on a cymbal stand etc. for use, install the included attachment and then secure it to a commercially available percussion holder.

1. Install the included attachment on this unit.

You can orient the attachment so that the unit can be installed on either side of the percussion holder. Attach the holder mounting screws (nut, bolt, washers) to the attachment, and use the two included attachment screws to secure it.



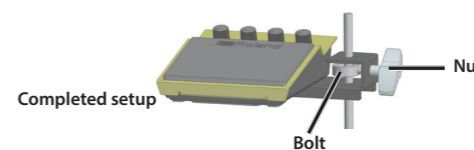
* The illustration shows assembly for fastening the right side of the unit to the percussion holder

2. Attach a commercially available percussion holder where you want to mount the unit (e.g., on a cymbal stand).

- * Acceptable rod diameters: 8.0–12.7 mm (3/8–1/2 inch)

3. Secure the unit to the percussion holder.

Pass the rod of the percussion holder through the hole in the bolt, and secure it with the nut.



Using the Cord Hook

As shown in the illustration, use the cord hook to secure the AC adaptor. This prevents the plug from being inadvertently disconnected by contact with a drumstick or by an impact.



Tips for Use

- If you switch between striking the pad with drumsticks and striking it with your hand or foot, you'll need to adjust the pad's sensitivity.

Striking with a drumstick	Lower the sensitivity
Using your hand or foot	Raises the sensitivity

- In an environment where there is high-volume sound, such as if you're using acoustic drums, sound or vibration from an external source might make the this unit produce sound even if it's not struck. The measures below can help prevent false triggering.

- Adjust the position and angle at which the percussion holder is mounted so that the unit is kept at a distance from the source of the vibration.
- Raises the minimum sensitivity (THRESHOLD) of the pad.

About Batteries

If using the unit on batteries, install four batteries, taking care to orient the batteries correctly.

- * If the TRIG indicator stays blinking, the batteries are low. Install new batteries.
- * If you handle batteries improperly, you risk explosion and fluid leakage. Make sure that you carefully observe all of the items related to batteries that are listed in the leaflet "USING THE UNIT SAFELY" and "IMPORTANT NOTES."

Sounds List

• ELECTRO (SPD-1E)

No.	Sounds Name	Normal	Variation
1	Standard Clap	Clap	Ambience Clap
2	Minimal Clap	Trio Clap	Finger Snap
3	TR Clap	TR-808 Clap	TR-909 Clap
4	Proc Snare 1	Deep Fat Snare	Dub Step Snare
5	Proc Snare 2	Tight Snare	Lo-Fi Snare
6	TR Snare	TR-909 Snare w/ Clap	TR-808 Snare
7	Elec Snare	Analog Snare 1	Analog Snare 2
8	Rim Shot	TR-909 Rim Shot	Cross Stick
9	Percussion	TR-808 Cowbell	TR-808 Maracas
10	Cymbal	TR-909 Hi-Hat Close/Open	TR-808 Cymbal
11	SFX	Super Low	Air Horn
12	User	–	–

• KICK (SPD-1K)

No.	Sounds Name	Normal	Variation
1	Std Kick	Studio Kick	Mellow Kick
2	Hard Kick	Heavy Kick	Impact Kick
3	Perc Kick	Cjan Bass	Djembe Bass
4	Stomp Box	Stomp Box 1	Stomp Box 2
5	TR Kick	Modified TR-909 Kick	Modified TR-808 Kick
6	Jingles	Jingles	Sleigh Bells
7	Cabasa/Guero	Cabasa	Guero
8	Ankle Bracelet	Chafchas	African Bracelet
9	Cowbell/Claves	Cowbell	Claves
10	Clap/X-Stick	DR-110 Clap	Cross Stick
11	Cymbal	Splash Cymbal	Pedal Hi-Hat
12	User	–	–

• PERCUSSION (SPD-1P)

No.	Sounds Name	Normal	Variation
1	Tamb/Bells	Tambourine	Sleigh Bells
2	Shaker/Guero	Shaker	Guero Hit/Scrape
3	Cowbell	Cowbell	Plastick Block
4	HH/Ride	Hi-Hat Close/Open	Ride Cymbal Bow/Bell
5	Crash Cym	Crash Cymbal	Pair Cymbal
6	EFX Cym	Chaina Cymbal	Stacked Cymbal
7	Snare/X-Stick	Wood Snare	Cross Stick
8	Conga/Bongo	Conga Open/Slap	Bongo Open/Slap
9	Timb/V.Slap	Timbales Open/Rim	Vibraslap
10	T.Chime/Tri	Tree Chime Short/Long	Triangle Mute/Open
11	Gong/Timp	Gong	Timpani
12	User	–	–

Main Specifications

Roland SPD::ONE ELECTRO (SPD-1E) / KICK (SPD-1K) / PERCUSSION (SPD-1P): Electronic Percussion Pad

Expected battery life under continuous use	Rechargeable Ni-MH battery (AA, HR6)	Approx. 7 hours (Normal use) Approx. 4 hours (Maximum load use)
	Alkaline battery (AA, LR6)	Approx. 6 hours (Normal use) Approx. 3 hours (Maximum load use)
Dimensions	140 (W) x 160 (D) x 56 (H) mm 5-9/16 (W) x 6-5/16 (D) x 2-1/4 (H) inches (excluding attachment)	
Weight	900 g 2 lb (including batteries, excluding attachment)	
Accessories	Owner's manual (this document), Leaflet "USING THE UNIT SAFELY," Attachment, Attachment screws x 2, Holder mounting screws (nut x 1, bolt x 1, washers x 2), Alkaline batteries (AA, LR6) x 4	
Options (sold separately)	AC adaptor (PSA-S series), USB cable (micro-B type)	

* This document explains the specifications of the product at the time that the document was issued. For the latest information, refer to the Roland website.