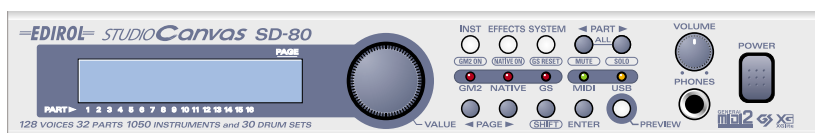


# STUDIO Canvas SD-80

## Getting Started

Thank you, and congratulations on your choice of the STUDIO Canvas SD-80.

Before using this unit, carefully read the sections entitled: “IMPORTANT SAFETY INSTRUCTIONS” (Owner’s manual p. 2), “USING THE UNIT SAFELY” (Owner’s manual pp. 3–4), and “IMPORTANT NOTES” (Owner’s manual p. 5). These sections provide important information concerning the proper operation of the unit. Additionally, in order to feel assured that you have gained a good grasp of every feature provided by your new unit, Getting started and Owner’s manual should be read in its entirety. The manual should be saved and kept on hand as a convenient reference.



Copyright © 2002 ROLAND CORPORATION

All rights reserved. No part of this publication may be reproduced in any form without the written permission of ROLAND CORPORATION.

## **For 230 V (English)**

This box contains continental and British power cables. Please select the correct type for your country.

## **Für 230 V (Deutsch)**

Diese Packung beinhaltet europäische und britische Netzkabel. Bitte suchen Sie sich die richtige Variante für Ihr Land aus.

## **Pour 230 V (Français)**

Cette boîte contient des alimentations anglaises ou continentales. Merci de choisir l'alimentation appropriée de votre pays.

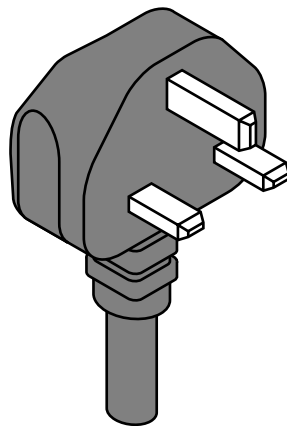
## **Per 230 V (Italiano)**

La confezione contiene alimentatori con spina europea e Inglese. Scegliete quella adatta alla Vostra nazione.

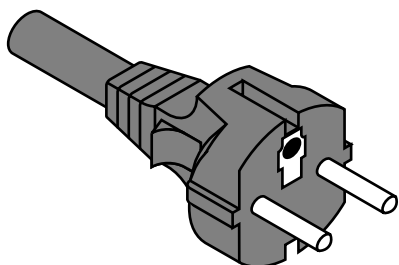
## **Para 230 V (Español)**

Esta caja contiene cables de corriente continentales y británicos. Por favor seleccione el tipo correcto para su país.

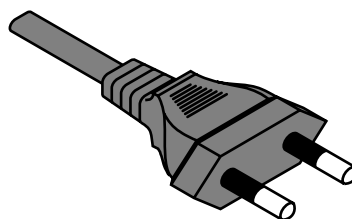
### **Application of AC230 V Power Cord**



for UK



or



except for UK

# Contents

<b>Contents .....</b>	<b>3</b>
<b>Contents of the Package .....</b>	<b>4</b>
<b>Connections with audio equipment .....</b>	<b>6</b>
<b>Installing &amp; Setting Up the Driver (Windows).....</b>	<b>7</b>
Driver Installation.....	7
Settings .....	19
Check whether there is sound.....	22
<b>Installing &amp; Setting Up the Driver (Macintosh).....</b>	<b>23</b>
Connecting your Macintosh.....	23
Installing the SD-80 driver (OMS).....	24
Installing the SD-80 driver (FreeMIDI).....	28
<b>Troubleshooting.....</b>	<b>30</b>
Problems related to the USB driver.....	30
Problems when using the SD-80.....	34
Deleting the driver.....	37

\* Microsoft and Windows are registered trademarks of Microsoft Corporation.

\* Screen shots in this documents are reprinted with permission from Microsoft Corporation.

\* Windows® XP is known officially as: "Microsoft® Windows® XP operating system."

\* Windows® 2000 is known officially as: "Microsoft® Windows® 2000 operating system."

\* Windows® Me is known officially as: "Microsoft® Windows® Millennium Edition operating system."

\* Windows® 98 is known officially as: "Microsoft® Windows® 98 operating system."

\* Apple and Macintosh are registered trademark of Apple Computer, Inc.

\* MacOS is a trademark of Apple Computer, Inc.

\* GS () is a registered trademark of Roland Corporation.

\* XG () and XGlite () are trademarks of YAMAHA Corporation.

\* OMS is a registered trademark of Opcode Systems, Inc.

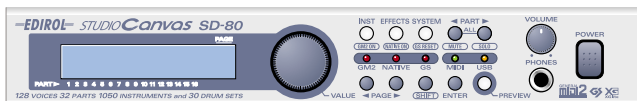
\* FreeMIDI is a trademark of Mark of the Unicorn, Inc.

\* All product names mentioned in this document are trademarks or registered trademarks of their respective owners.

# Contents of the Package

The box in which the SD-80 was shipped should contain the following items. After opening the box, first check to make sure that all the items are included. If any items are missing, please contact the store where you purchased the SD-80.

## ●SD-80



## ●AC cable

This is the only AC cable you should use with the SD-80.

Do not use any AC cable other than the supplied one, since doing so may cause malfunction.

## ●USB Cable

## ●CD-ROM

This contains drivers used by the SD-80, and demo songs.

\* *Avoid touching or scratching the shiny underside (encoded surface) of the disc. Damaged or dirty CD-ROM discs may not be read properly. Keep your discs clean using a commercially available CD cleaner.*



*DO NOT play a CD-ROM disc on a conventional audio CD player. The resulting sound may be of a level that could cause permanent hearing loss. Damage to speakers or other system components may result.*



## ●Getting Started

This is the manual you are holding. Please read this first.

This manual explains how to install the drivers and make the settings required in order to use the SD-80. Starting at the beginning, please read the sections that are relevant to your system.

## ●Owner's Manual

This is the owner's manual for the SD-80.

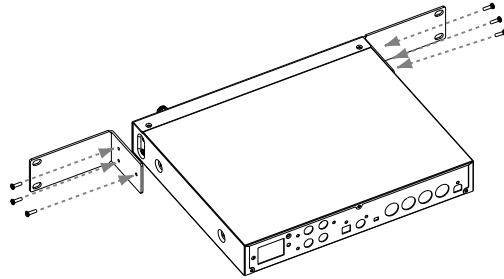
Read this to gain in-depth information concerning the use of the SD-80, and the numerous functions it offers.

## ● Rack-mount adaptor

Use this when you want to install the SD-80 in an audio rack. Two rack ears are included.

### Attaching the rack-mount adaptor

1. Remove three screws (on each side) from the right and left panels of the SD-80.
2. Using the screws you removed in **step 1**, attach the rack-mount brackets to the SD-80.



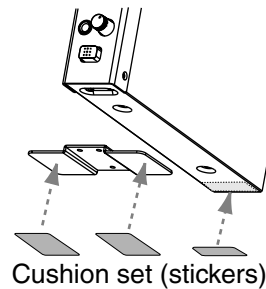
\* You must use the screws that you removed.  
Do not use any other screws.

## ● Desk-stand mount

Use this when you want to place the SD-80 vertically. (with Cushion sets)

### Attaching the desk-stand mount

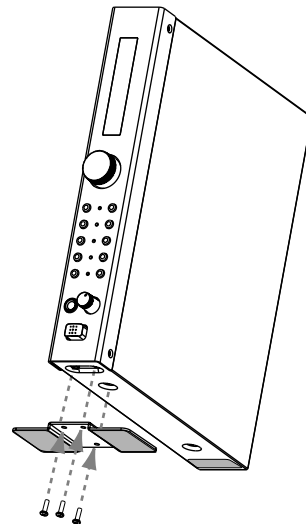
1. Remove three screws from the right panel of the SD-80.
2. Affix the cushion set (stickers) to the locations shown in the diagram at right.



3. Using the screws you removed in **step 1**, attach the desk-stand mount to the SD-80.

\* You must use the screws that you removed. Do not use any other screws.

**When standing the SD-80 on its side, make sure to position it so the power switch is at the bottom.**



# Connections with audio equipment

You will not hear any sound from the SD-80 unless you connect headphones to the Headphones jack, or connect the audio outputs (analog) of the SD-80 to your audio playback equipment as shown below. You will need the following items.

- SD-80
- Audio cables
- Audio playback equipment such as an amp and speakers, or a stereo system

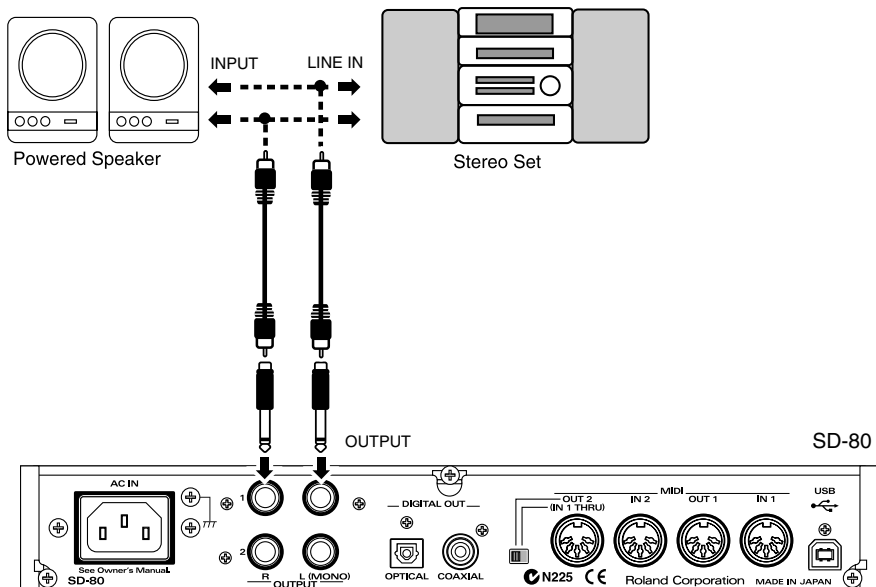
\* Before making connections to other equipment, you must turn down the volume of all equipment to avoid malfunctions or speaker damage.

\* To avoid short circuits or broken connections, grasp the plug when disconnecting a cable.

\* Some connection cables contain a resistor. Do not use a cable with a built-in resistor to connect with the SD-80. Doing so may make the sound extremely weak, or inaudible. For details on your cable, please contact its manufacturer.

**1** Lower the volume of your audio playback equipment.

**2** Connect the SD-80's **OUTPUT1 jacks** to the input jacks of your audio playback equipment. If you are using headphones, connect them to the **Headphone jack** located on the front panel of the SD-80.



# Installing & Setting Up the Driver (Windows)

The following items are required for connections and installation. Remove them from the SD-80 package, and have them ready.

- SD-80
- USB cable
- AC cable
- CD-ROM

In order to use the SD-80, you must first install the USB MIDI driver. The installation procedure will differ depending on your system. Please proceed to one of the following sections, depending on the system you use.

- Windows XP users ..... (p. 7)
- Windows 2000 users..... (p. 13)
- Windows Me/98 users ..... (p. 17)
- Macintosh users ..... (p. 23)

## Driver Installation

### ■ Windows XP users

**1**

With the SD-80 disconnected, start up Windows.

Disconnect all USB cables except for a USB keyboard and USB mouse (if used).

**2**

Open the **System Properties** dialog box.

1. Click the Windows **Start** menu, and from the menu, select **Control Panel**.
2. In “**Pick a category**”, click “**Performance and Maintenance**”.
3. In “**or pick a Control Panel icon**”, click the **System** icon.

### MEMO

#### What is a driver?

A “driver” is software that transfers data between the SD-80 and application software running on your computer, when your computer and the SD-80 are connected by a USB cable.

The driver sends data from your application to the SD-80, and from the SD-80 to your application.

### NOTE

If you are using Windows XP Professional, you must log on using a user name with an administrative account type (e.g., Administrator). For details on user accounts, please consult the system administrator of your computer.

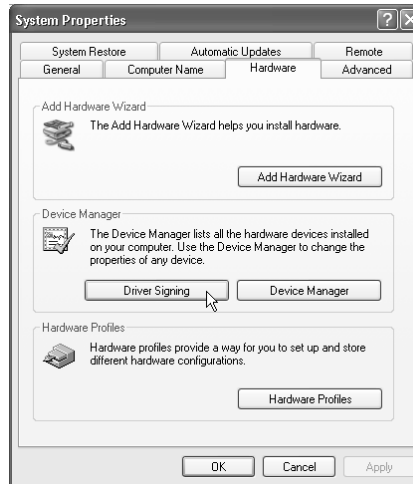
### MEMO

Depending on how your system is set up, the **System** icon may be displayed directly in the **Control Panel** (the Classic display). In this case, double-click the **System** icon.

**3**

Open the **Driver Signing Options** dialog box.

Click the **Hardware** tab, and then click **[Driver Signing]**.

**4**

Make sure that “**What action do you want Windows to take?**” is set to “**Ignore**”.

If it is set to “**Ignore**”, simply click **[OK]**.

If it is not set to “**Ignore**”, make a note of the current setting (“**Warn**” or “**Block**”). Then change the setting to “**Ignore**” and click **[OK]**.

**5**

Close the **System Properties** dialog box.

Click **[OK]**.

**6**

Exit all currently running software (applications).

Also close any open windows. If you are using virus checking or similar software, be sure to exit it as well.

**7**

Prepare the CD-ROM.

Insert the CD-ROM into the CD-ROM drive of your computer.

**8**

Open the “**Run...**” dialog box.

Click the Windows **start** button. From the menu that appears, select “**Run...**”.

**MEMO**

If you changed “**What action do you want Windows to take?**” in **step 4**, you must restore the previous setting after you have installed the driver. (->**If you changed “What action do you want Windows to take?”** (p. 12))

**MEMO**

If “**Windows can perform the same action each time you insert a disk or connect a device with this kind of file**” appears, click **[Cancel]**.

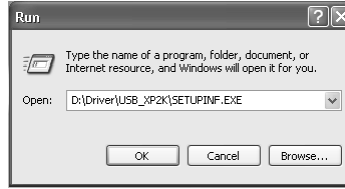


9

In the dialog box that appears, input the following into the “Open” field, and click [OK].

**D:\Driver\USB\_XP2K\SETUPINF.EXE**

\* The drive name “D:” may be different for your system. Specify the drive name of your CD-ROM drive.



10

The **SetupInf** dialog box will appear.

You are now ready to install the driver.



11

Use the **USB cable** to connect the **SD-80** to your **computer**.

1. With the power switch turned **OFF**, connect the **AC cable** to the **SD-80**.
2. Connect the **AC cable** to an electrical outlet.
3. Use the **USB cable** to connect the **SD-80** to your **computer**.

12

Set the SD-80's **power switch** to the **ON** position.

Near the task bar, your computer will indicate “**Found New Hardware**”. Please wait.

13

The **Found New Hardware Wizard** will appear.

Make sure that the screen indicates “**EDIROL SD-80**”, select “**Install from a list or specific location (Advanced)**”, and click [Next].



## MEMO

In this manual, the location of folders and files is given in terms of the file path, using \ as the delimiter. For example, **USB\_XP2K\SETUPINF.EXE** indicates the **SETUPINF.EXE** file found in the **USB\_XP2K** folder.

## MEMO

If “**Do you want to reinstall the driver after uninstalling the driver that is already installed?**” appears, click [Yes].

## MEMO

Once the connections have been completed, turn on power to your various devices in the order specified. By turning on devices in the wrong order, you risk causing malfunction and/or damage to speakers and other devices.

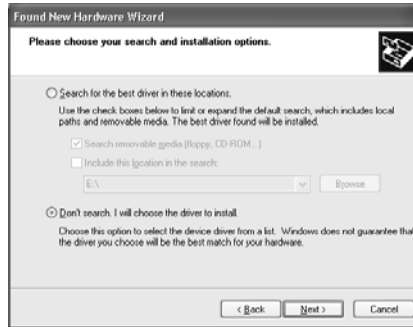
## MEMO

Always make sure to have the volume level turned down before switching on power. Even with the volume all the way down, you may still hear some sound when the power is switched on, but this is normal, and does not indicate a malfunction.

**14**

The screen will indicate **“Please choose your search and installation options”**.

Select **“Don’t search. I will choose the driver to install”**, and click **[Next]**.

**15**

Make sure that the **“Model”** field indicates **“EDIROL SD-80”**, and click **[Next]**. Driver installation will begin.



If the **“What action do you want Windows to take?”** setting was not set to **“Ignore”**, a **“Hardware Installation”** dialog box will appear.

If **“What action do you want Windows to take?”** is set to **“Warn,”**

1. Click **[Continue Anyway]**.
2. Continue the installation.



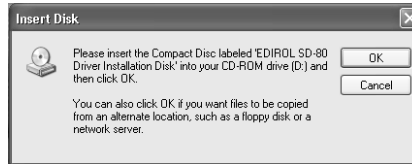
If **“What action do you want Windows to take?”** is set to **“Block”**

1. Click **[OK]**.
2. When the **“Found New Hardware Wizard”** appears, click **[Finish]**.
3. Perform the installation as described in the **“Troubleshooting”** section on **Device Manager** shows **“?”**, **“!”**, or **“USB Composite Device”** (p. 33).



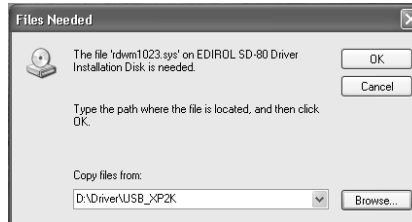
**16** The **Insert Disk** dialog box will appear.

Click **[OK]**.



**17** The **Files Needed** dialog box will appear. Input the following into the “**Copy files from**” field, and click **[OK]**.

**D:\Driver\USB\_XP2K**

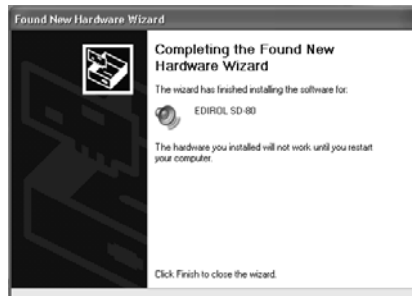


\* The drive name “**D:**” may be different for your system. Specify the drive name of your CD-ROM drive.

**18** The **Found New Hardware Wizard** will appear.

Make sure that the display indicates “**EDIROL SD-80**”, and click **[Finish]**.

Wait until “**Found New Hardware**” appears near the taskbar.



**19** When driver installation has been completed, the **System Setting Change** dialog box will appear.

Click **[Yes]**. Windows will restart automatically.



The **Insert Disk** dialog may not appear. In that case, proceed to **step 17**.

### If you changed “What action do you want Windows to take?”

If you changed the **What action do you want Windows to take?** setting, restore the original setting after Windows restarts.

1. If you are using **Windows XP Professional**, log on to Windows using the user name of an **administrative account** (e.g., Administrator).
2. Click the Windows **start** menu, and from the menu, select **Control Panel**.
3. In “**Pick a category**”, click “**Performance and Maintenance**”.
4. In “**or pick a Control Panel icon**”, click the **System** icon. The System Properties dialog box will appear.
5. Click the **Hardware** tab, and then click [**Driver Signing**]. The **Driver Signing Options** dialog box will appear.
6. Return the **What action do you want Windows to take?** setting to the original setting (either “Warn” or “Block”), and click [**OK**].
7. Click [**OK**]. The **System properties** dialog box will close.

Next, you need to make the driver settings.

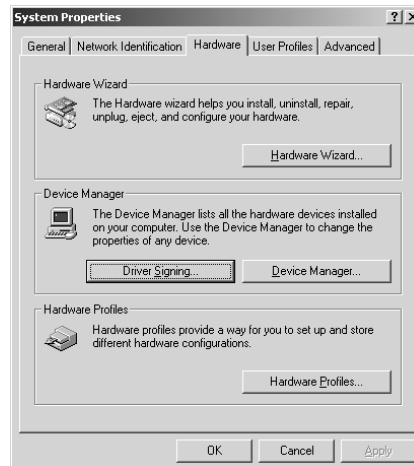
(-> **MIDI input and output destinations** (p. 19))



Depending on how your system is set up, the **System** icon may be displayed directly in the **Control Panel** (the Classic display). In this case, double-click the System icon.

## ■ Windows 2000 users

- 1 With the SD-80 disconnected, start up Windows.  
Disconnect all USB cables except for a USB keyboard and USB mouse (if used).
- 2 Log on to Windows as a **user with administrative privileges** (such as Administrator).
- 3 Open the **System Properties** dialog box.  
Click the Windows **Start** button, and from the menu that appears, select **Settings | Control Panel**. In **Control Panel**, double-click the **System** icon.
- 4 Open the **Driver Signing Options** dialog box.  
Click the **Hardware** tab, and then click **[Driver Signing]**.



- 5 Make sure that “**File signature verification**” is set to “**Ignore**”.  
If it is set to “**Ignore**”, simply click **[OK]**.  
If it is not set to “**Ignore**”, make a note of the current setting (“**Warn**” or “**Block**”). Then change the setting to “**Ignore**” and click **[OK]**.



- 6 Close the **System Properties** dialog box.  
Click **[OK]**.



If you have already connected the SD-80 to your computer but the “**Add New Hardware Wizard**” appears, refer to “**You attempted to install using the above procedure, but were not able to**” in the **Troubleshooting** section of the **Readme\_e** file included in the **DriverUSB\_XP2K** folder on the CD-ROM.



If you changed the “**File signature verification**” setting in **step 5**, restore the original setting after Windows restarts. (->If you changed “**File signature verification**” (p. 16))

**7**

Exit all currently running software (applications).

Also close any open windows. If you are using virus checking or similar software, be sure to exit it as well.

**8**

Prepare the CD-ROM.

Insert the CD-ROM into the CD-ROM drive of your computer.

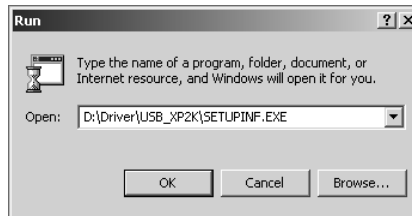
**9**

Open the “Run...” dialog box.

Click the Windows **Start** button. From the menu that appears, select “Run...”.

**10**

In the dialog box that appears, input the following into the “Open” field, and click [OK].



**D:\Driver\USB\_XP2K\SETUPINF.EXE**

\* The drive name “**D:**” may be different for your system. Specify the drive name of your CD-ROM drive.

**11**

The **SetupInf** dialog box will appear.

You are now ready to install the driver.

**12**

Use the **USB cable** to connect the **SD-80** to your **computer**.

1. With the power switch turned **OFF**, connect the **AC cable** to the **SD-80**.
2. Connect the **AC cable** to an electrical outlet.
3. Use the **USB cable** to connect the **SD-80** to your **computer**.

**MEMO**

In this manual, the location of folders and files is given in terms of the file path, using \ as the delimiter. For example, **USB\_XP2K\SETUPINF.EXE** indicates the **SETUPINF.EXE** file found in the **USB\_XP2K** folder.

**MEMO**

If a message of “**The driver is already installed**” appears, you can connect the SD-80 to your computer and use it.

**MEMO**

Once the connections have been completed, turn on power to your various devices in the order specified. By turning on devices in the wrong order, you risk causing malfunction and/or damage to speakers and other devices.

**MEMO**

Always make sure to have the volume level turned down before switching on power. Even with the volume all the way down, you may still hear some sound when the power is switched on, but this is normal, and does not indicate a malfunction.

**13**

Set the SD-80's **power switch** to the **ON** position.

If the “**File signature verification**” setting was not set to “**Ignore**”, a “**Digital Signature Not Found**” dialog box will appear.

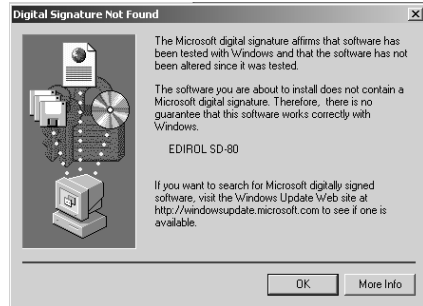
If “**File signature verification**” is set to “**Warn**,”

1. Click [**Yes**].
2. Continue the installation.



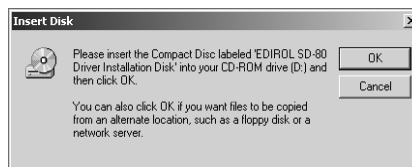
If “**File signature verification**” is set to “**Block**”

1. Click [**OK**].
2. When the “**Found New Hardware Wizard**” appears, click [**Finish**].
3. Perform the installation as described in the “**Troubleshooting**” section on **Device Manager** shows “**?**”, “**!**”, or “**USB Composite Device**” (p. 33).

**14**

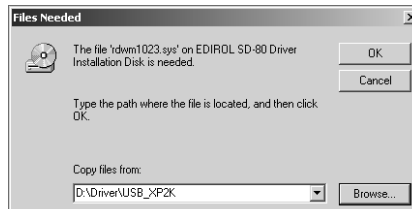
The **Insert Disk** dialog box will appear.

Click [**OK**].

**15**

The **Files Needed** dialog box will appear.

Input the following into the “**Copy files from**” field, and click [**OK**].



**D:\Drivers\USB\_XP2K**

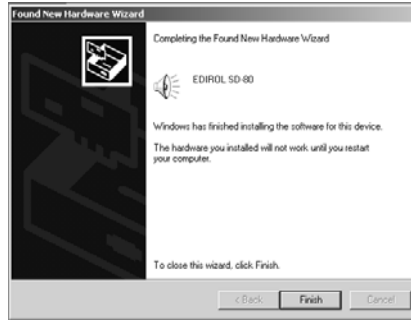
\* The drive name “**D:**” may be different for your system. Specify the drive name of your CD-ROM drive.

**16** The “**Found New Hardware Wizard**” may be displayed.

Verify that “**EDIROL SD-80**” is displayed, and click [**Finish**].

**17** Restart Windows.

The **System Settings Change** dialog box may appear. Click [**Yes**]. Windows will restart automatically.



### **If you changed “File signature verification”**

If you changed the “File signature verification” setting, restore the original setting after Windows restarts.

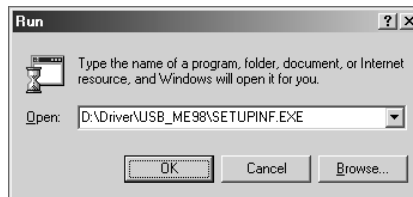
- 1.** After Windows restarts, log in to Windows as a user with **administrative privileges**, (such as Administrator).
- 2.** In the Windows desktop, right-click the **My Computer** icon, and from the menu that appears, select **Properties**. The **System Properties** dialog box will appear.
- 3.** Click the **Hardware** tab, and then click [**Driver signature**]. The **Driver Signing Options** dialog box will appear.
- 4.** Return the “**File signature verification**” setting to the original setting (either “**Warn**” or “**Block**”), and click [**OK**].
- 5.** Click [**OK**]. The **System properties** dialog box will close.

Next, you need to make the driver settings.  
(-> **MIDI input and output destinations** (p. 19)



## ■ Windows Me/98 users

- 1 With the SD-80 disconnected, start up Windows.  
Disconnect all USB cables except for a USB keyboard and USB mouse (if used).
- 2 Exit all currently running software (applications).  
Also close any open windows. If you are using virus checking or similar software, be sure to exit it as well.
- 3 Prepare the CD-ROM.  
Insert the CD-ROM into the CD-ROM drive of your computer.
- 4 Open the “Run...” dialog box.  
Click the Windows **Start** button.  
From the menu that appears, select “Run...”.
- 5 In the dialog box that appears, input the following into the “Open” field, and click [OK].



**D:\Driver\USB\_ME98\SETUPINF.EXE**

\* The drive name “D:” may be different for your system. Specify the drive name of your CD-ROM drive.

- 6 The **SetupInf** dialog box will appear.  
You are now ready to install the driver.  
\* Do not click [OK] at this time.



### MEMO

If you have already connected the SD-80 to your computer but the “Add New Hardware Wizard” appears, refer to “You attempted to install using the above procedure, but were not able to” in the **Troubleshooting** section of the **Readme\_e** file included in the **DriverUSB\_ME98** folder on the CD-ROM.

### MEMO

In this manual, the location of folders and files is given in terms of the file path, using \ as the delimiter. For example, **USB\_ME98\SETUPINF.EXE** indicates the **SETUPINF.EXE** file found in the **USB\_ME98** folder.

### MEMO

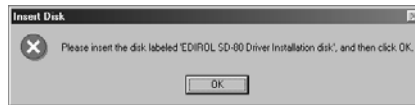
If a message of “The driver is already installed” appears, you can connect the SD-80 to your computer and use it.

**7** Use the **USB cable** to connect the **SD-80** to your **computer**.

1. With the power switch turned **OFF**, connect the **AC cable** to the **SD-80**.
2. Connect the **AC cable** to an electrical outlet.
3. Use the **USB cable** to connect the **SD-80** to your **computer**.

**8** Set the SD-80's **power switch** to the **ON** position.

**9** If you are using Windows 98, an **Insert Disk** dialog box will appear. Click **[OK]**.

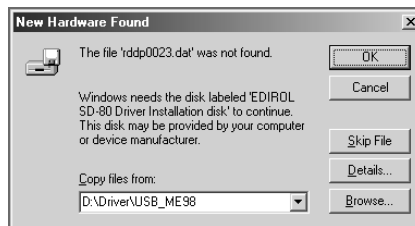


**10** The **New Hardware Found** dialog box will appear.

Input the following into the **“Copy files from”** field, and click **[OK]**.

**D:\Driver\USB\_ME98**

*\* The drive name **“D:”** may be different for your system. Specify the drive name of your CD-ROM drive.*



**11** Once the driver has been installed, **New Hardware Found** dialog box will close.

In the **SetupInf** dialog box, click **[OK]**. The **SETUPINF** dialog box will close.

Next, you need to make the driver settings.  
(-> **MIDI input and output destinations** (p. 19))

If you were not able to install the SD-80 driver according to the procedure, or if you are unable to use the SD-80 even after installing the driver, you must delete the driver. For details on how to delete the driver, refer to **Deleting the driver** (p. 37).  
After deleting the driver, use the procedure described in **“Installing & Setting Up the Driver (Windows)”** (p. 7) to re-install the driver.

**NOTE**

Once the connections have been completed, turn on power to your various devices in the order specified. By turning on devices in the wrong order, you risk causing malfunction and/or damage to speakers and other devices.

**MEMO**

Always make sure to have the volume level turned down before switching on power. Even with the volume all the way down, you may still hear some sound when the power is switched on, but this is normal, and does not indicate a malfunction.

**NOTE**

If you are using Windows 98 and the **Insert Disk** dialog box does not appear, please read **The “Insert Disk” dialog box does not appear** (p. 33).

**NOTE**

If the **New Hardware Found** dialog box does not appear, re-install the driver using the same procedure as described in **The “Insert Disk” dialog box does not appear** (p. 33).

# Settings

## ■ MIDI input and output destinations

### Windows XP/2000/Me users

**1**

Open **Control Panel**.

Click the Windows **Start** button, and from the menu that appears, select **Settings | Control Panel**.

#### **Windows XP**

Click the Windows **start** button, and from the menu that appears, select **Control Panel**.

**2**

Open the **Sounds and Audio Devices Properties** dialog box (or in Windows 2000/Me, **Sounds and Multimedia Properties**).

#### **Windows XP**

In “**Pick a category**”, click “**Sound, Speech, and Audio Devices**”. Next, in “**or pick a Control Panel icon**”, click the **sounds and Audio Devices** icon.

#### **Windows 2000/Me**

In **Control Panel**, double-click the **Sounds and Multimedia** icon to open the “**Sounds and Multimedia Properties**” dialog box.

**3**

Click the **Audio** tab.

**4**

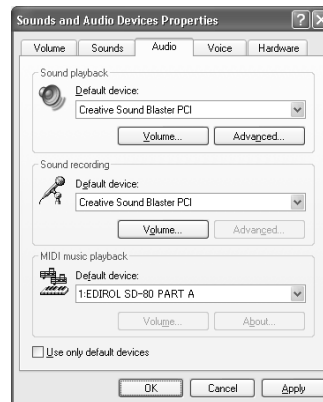
For **MIDI music playback**, click the ▼ located at the right of [**Default device**] (or in Windows 2000/Me, [**Preferred device**]), and select the following from the list that appears.

#### **1:EDIROL SD-80 PARTA**

**5**

Close the **Sounds and Audio Devices Properties** dialog box.

Click **OK** to complete the settings.



Proceed to the next section.

- Windows XP users ..... p. 21
- Windows 2000/Me users ..... p. 22

### **MEMO**

Depending on how your system is set up, the **Sounds and Audio Devices** icon may be displayed directly in the **Control Panel** (the Classic display). In this case, double-click the **Sounds and Audio Devices** icon.

### **MEMO**

**Additional information about the ports**

**SD-80 MIDI OUT1:**  
Sends/receives data from the SD-80's MIDI OUT 1 connectors

**SD-80 MIDI OUT2:**  
Sends/receives data from the SD-80's MIDI OUT 2 connectors

**SD-80 PART A:**  
Sends/receives data for SD-80 part group A

**SD-80 PART B:**  
Sends/receives data for SD-80 part group B

## Windows 98 users

1

Open **Control Panel**.

Click the Windows **Start** button, and from the menu that appears, select **Settings | Control Panel**.

2

Open the **Multimedia Properties** dialog box.

In **Control Panel**, double-click the **Multimedia** icon to open the “**Multimedia Properties**” dialog box.

3

Click the **MIDI** tab.

4

Set “**MIDI output**”.

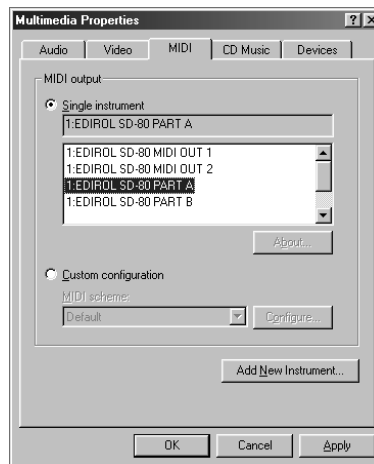
Select [**Single instrument**], and choose one of the following from the list that appears.

**1:EDIROL SD-80 PART A**

5

Close the **Multimedia Properties** dialog box.

Click **OK** to complete the settings.



### MEMO

**Additional information about the ports**

#### SD-80 MIDI OUT1:

Sends/receives data from the SD-80's MIDI OUT 1 connectors

#### SD-80 MIDI OUT2:

Sends/receives data from the SD-80's MIDI OUT 2 connectors

#### SD-80 PART A:

Sends/receives data for SD-80 part group A

#### SD-80 PART B:

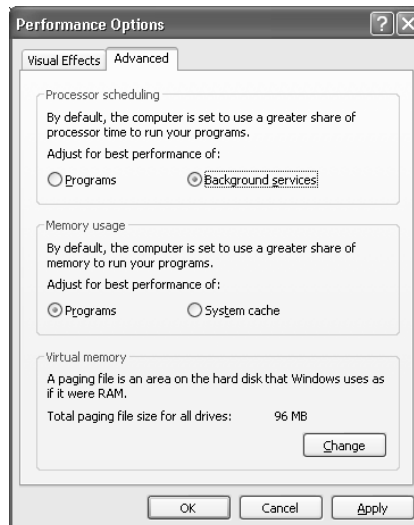
Sends/receives data for SD-80 part group B

Proceed to the next section. -> **Check whether there is sound** (p. 22)

## ■ Enabling background services

In Windows XP, perform these settings to make MIDI processing occur more smoothly. These settings are unavailable in Windows 2000/Me/98.

- 1 Click the Windows **start** button, and from the menu that appears, select **Control Panel**.
- 2 In “**Pick a category**”, click “**Performance and Maintenance**”.
- 3 In “**or pick a Control Panel icon**”, click the **System** icon.
- 4 Click the **Advanced** tab.
- 5 At the right of the Performance field, click [**Settings**]. The Performance Options dialog box will appear.
- 6 Click the **Advanced** tab.
- 7 In the **Processor Scheduling** field, select “**Background services**”, and click [**OK**].
- 8 In the **System Properties** dialog box, click [**OK**].  
The **System Properties** dialog box will close.



### MEMO

Depending on how your system is set up, the **System** icon may be displayed directly in the **Control Panel** (the Classic display). In this case, double-click the **System** icon.

# Check whether there is sound

Next, play back the sample data to verify that the driver installation and settings were performed correctly.

## ■ Playing back the sample data (MIDI)

Here we will use standard Windows functionality to play back the sample data (MIDI). The sample data is found on the CD-ROM.

1

Prepare the CD-ROM.

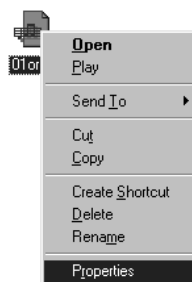
Insert the CD-ROM into the CD-ROM drive of your computer.

2

From the **DemoSong\Additional** folder of the CD-ROM, drag **01ORCH(.MID)** to your desktop to copy it.


3

Right-click the copied file **01ORCH(.MID)**, and select **Properties (Play for Windows XP/2000/Me)**.



4

Play back the sample data.

Click the **Preview** tab, and then click the  button.



### Was the sample data played back?

If it was played back correctly, this means that the computer and the SD-80 are connected correctly, and that the drivers have been installed correctly.



Use of the demo song supplied with this product for any purpose other than private, personal enjoyment without the permission of the copyright holder is prohibited by law. Additionally, this data must not be copied, nor used in a secondary copyrighted work without the permission of the copyright holder.



What you actually see on your computer screen may be different, depending on your computing environment and the operating system you're using.



If it did not play back correctly, refer to **Troubleshooting** (p. 34) to determine the reason. This section contains information on how to solve problems such as no sound, or failure to play back correctly.

# Installing & Setting Up the Driver (Macintosh)

The following items are required for connections and installation. Remove them from the SD-80 package, and have them ready.

- SD-80
- USB cable
- AC cable
- CD-ROM

## Connecting your Macintosh

- 1 Turn off the power of the Macintosh and all peripheral devices connected to the Macintosh.
- 2 With the power switch turned **OFF**, connect the **AC cable** to the **SD-80**.
- 3 Connect the **AC cable** to an electrical outlet.
- 4 Turn on the peripheral devices connected to the Macintosh, except for the SD-80. Then turn on the power of the Macintosh itself.

\* *Do not turn on the power of the SD-80 at this time.*

If the power of the SD-80 is turned on, a message like the following will appear when the Macintosh is started up. Perform the steps described below as appropriate for the message that is displayed.

If the screen indicates:

**“Driver required for USB device ‘unknown device’ is not available.  
Search for driver on the Internet?”** -> click [Cancel].

If the screen indicates:

**“Software required for using device ‘unknown device’ cannot be found.  
Please refer to the manual included with the device, and install the  
necessary software.”** -> click [OK].

### Use either OMS or FreeMIDI as the MIDI driver.

- If you are using OMS.....(p. 24)
- If you are using FreeMIDI .....(p. 28)

\* *Either **OMS** or **FreeMIDI** must be installed in your Macintosh, as appropriate for the sequencer software you are using.*

### **What is a driver?**

A “driver” is software that transfers data between the SD-80 and application software running on your computer, when your computer and the SD-80 are connected by a USB cable. The driver sends data from your application to the SD-80, and from the SD-80 to your application.

# Installing the SD-80 driver (OMS)

Use the following procedure to install the SD-80 driver.

The included **SD-80 OMS driver** is an add-on module for using the SD-80 with OMS. In order for you to use it, **OMS must already be installed on the hard disk from which you started up.**

If you would like to learn more about OMS, refer to **OMS\_2.3\_Mac.pdf** (online manual) in the **OMS2.3.8E** folder within the **OMS** folder of the CD-ROM.

\* *Disconnect the SD-80 from the Macintosh before you perform the installation.*

**1**

Exit all currently running software (applications).

If you are using a virus checker or similar software, be sure to exit this as well.

**2**

Prepare the CD-ROM.

Insert the CD-ROM into the CD-ROM drive.

**3**

Double-click the **SD-80 OMS Driver-E Installer** icon (found in the **Driver E-OMS** folder of the CD-ROM) to start up the installer.

**4**

Verify the **Install Location**, and click [**Install**].

**5**

If a message like the following is displayed, click [**Continue**].

The other currently running applications will exit, and installation will continue.



**6**

A dialog box will indicate **Installation completed**.

Click [**Restart**] to restart your Macintosh.

**7**

Use the **USB cable** to connect the **SD-80** to your **computer**.

**8**

Set the SD-80's power switch to the **ON** position.

## MEMO

OMS can be found in the **OMS 2.3.8 E** folder within the **OMS** folder of the CD-ROM.

## MEMO

You will need the Adobe Acrobat Reader in order to view **OMS\_2.3\_Mac.pdf**. The latest version of Adobe Acrobat Reader can be downloaded from the Adobe website. <http://www.adobe.com> (This URL may change without notice.)

## MEMO

Once the connections have been completed, turn on power to your various devices in the order specified. By turning on devices in the wrong order, you risk causing malfunction and/or damage to speakers and other devices.

## MEMO

Always make sure to have the volume level turned down before switching on power. Even with the volume all the way down, you may still hear some sound when the power is switched on, but this is normal, and does not indicate a malfunction.



## OMS settings

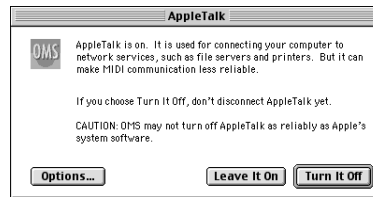
- 1** From the CD-ROM, drag the **Driver E-OMS-Setting** folder to the hard disk of your Macintosh to copy it.



- 2** In the **Opcode-OMS Application** folder where you installed OMS, double-click **OMS Setup** to start it up.



- 3** If a dialog box like the one shown here appears, click **[Turn It Off]**. A confirmation dialog box will then appear, so click **[OK]**.



### MEMO

We recommend that you turn off **AppleTalk**, by selecting **Chooser** from the Apple menu.

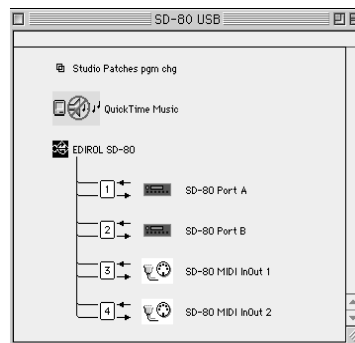
- 4** The **Create a New Studio Setup** dialog box will appear. Click **[Cancel]**. If you accidentally clicked **[OK]**, click **[Cancel]** in the next screen.



- 5** Choose "**Open**" from the **File** menu.

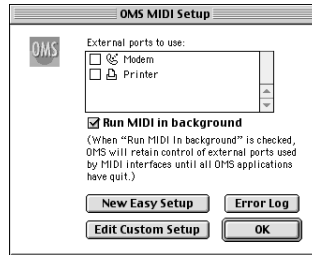
From the **Setting** folder that you copied in **step 1**, select the **SD-80 USB** file, and click **[Open]**.

A screen like the one shown here will appear.



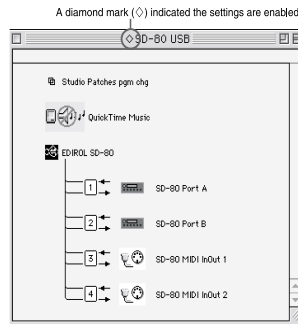
**6** From the **Edit** menu, select **OMS MIDI Setup**.

In the **OMS MIDI Setup** dialog box that appears, check **Run MIDI in background**, and click **[OK]**.



**7** From the **File** menu, choose **Make Current**.

If you are unable to select **Make Current**, it has already been applied, and you may continue to the next step.

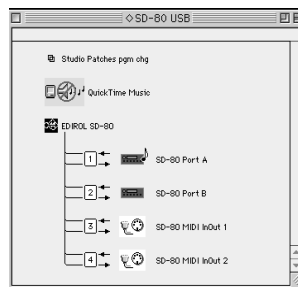


**8** Verify that MIDI transmission and reception can be performed correctly. From the **Studio** menu, choose **Test Studio**.



**9** When you move the mouse cursor near the sound generator icon, the cursor will change to a musical note shape.

Click on the sound generator icon of each port in the diagram at right. If sound is heard from the SD-80, the settings are correct.



### MEMO

#### Additional information about the ports

**SD-80 Port A:**  
Sends/receives data for SD-80 part group A

**SD-80 Port B:**  
Sends/receives data for SD-80 part group B

**SD-80 MIDI InOut1:**  
Sends/receives data from the SD-80's MIDI IN / OUT 1 connectors

**SD-80 MIDI InOut2:**  
Sends/receives data from the SD-80's MIDI IN 2 / OUT 2 connectors

**Does the SD-80's PART level meter move?**

If the PART level meter in the SD-80's display is moving but you do not hear sound, check whether the volume of the SD-80 or your speaker system has been lowered. If the PART level meter does not move, check the connections and OMS settings once again.

**MEMO**

If the SD-80 does not produce sound, refer to **No sound** (p. 34).

**10**

Exit **OMS Setup**.

From the **File** menu, choose **[Exit]**. If the **AppleTalk confirmation** dialog box appears, click **[OK]** to close the dialog box.

This completes the series of steps needed to connect the SD-80 to the Macintosh, install the MIDI driver, and make the driver settings.

## Installing the SD-80 driver (FreeMIDI)

Use the following procedure to install the SD-80 driver.

The included **SD-80 FreeMIDI driver** is an add-on module for using the SD-80 with FreeMIDI. In order to use it, **FreeMIDI must be installed on the hard disk from which you started up.**

\* *Disconnect the SD-80 from the Macintosh before beginning the installation.*

**1**

Exit all currently running software (applications).

If you are using a virus checker or similar software, be sure to exit this as well.

**2**

Prepare the CD-ROM.

Insert the CD-ROM into the CD-ROM drive.

**3**

Double-click the **SD-80 FM Driver-E Installer** icon (found in the **Driver E-FreeMIDI** folder of the CD-ROM) to start up the installer.

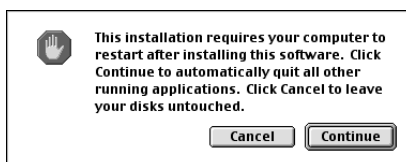
**4**

Verify the **Install Location**, and click **[Install]**.

**5**

If a message like the following is displayed, click **[Continue]**.

The other currently running applications will exit, and installation will continue.



**6**

A dialog box will indicate **Installation completed**. Click **[Restart]** to restart your Macintosh.

**7**

Use the **USB cable** to connect the **SD-80** to your **computer**.

**8**

Switch **ON** the SD-80's Power switch.

### FreeMIDI settings

**1**

From the CD-ROM, copy the **Driver E-FreeMIDI-Setting** folder onto the hard disk of your Macintosh.

**2**

Open the **FreeMIDI Applications** folder from the location into which you installed FreeMIDI, and double-click the **FreeMIDI Setup** icon to start it up.

### MEMO

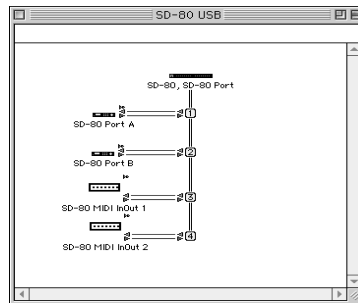
Once the connections have been completed, turn on power to your various devices in the order specified. By turning on devices in the wrong order, you risk causing malfunction and/or damage to speakers and other devices.

### MEMO

Always make sure to have the volume level turned down before switching on power. Even with the volume all the way down, you may still hear some sound when the power is switched on, but this is normal, and does not indicate a malfunction.

- 3 When “OMS is installed on this computer...” appears, click [**FreeMIDI**].
- 4 The first time the software is started up, a dialog box saying “Welcome to FreeMIDI!” will appear. Click [**Continue**].
- 5 When the **FreeMIDI Preferences** dialog box appears, click [**Cancel**].
- 6 When the **About Quick Setup** dialog box appears, click [**Cancel**].
- 7 From the **File** menu, choose **Open**.
- 8 Select **SD-80** from the **FreeMIDI Setting** folder you copied in **step 1**, and click [**Open**].
- 9 Verify that MIDI transmission and reception occur correctly. From the **MIDI** menu, choose **Check Connections**.

- 10 The mouse cursor will change to the shape of a note. Click on the icon of each port in the diagram at right.  
If you hear sound, MIDI messages are being sent from the Macintosh to the SD-80.



### Does the SD-80's PART level meter move?

If the PART level meter in the SD-80's display is moving but you do not hear sound, check whether the volume of the SD-80 or your speaker system has been lowered. If the PART level meter does not move, check the connections and OMS settings once again.

- 11 Once again choose the **MIDI** menu command **Check Connections** to end the test.
- 12 From the **File** menu, choose **Quit** to exit **FreeMIDI Setup**.  
This completes the series of steps needed to connect the SD-80 to the Macintosh, install the MIDI driver, and make the driver settings. Now, MIDI data can be input and output (recorded and played).

### MEMO

Additional information about the ports

#### SD-80 Port A:

Sends/receives data for SD-80 part group A

#### SD-80 Port B:

Sends/receives data for SD-80 part group B

#### SD-80 MIDI InOut1:

Sends/receives data from the SD-80's MIDI IN 1/OUT 1 connectors

#### SD-80 MIDI InOut2:

Sends/receives data from the SD-80's MIDI IN 2/OUT 2 connectors

### MEMO

If the SD-80 does not produce sound, refer to “No sound (p. 34)”.

# Troubleshooting

If an unexpected problem occurs while using the SD-80, read this chapter first. It contains numerous tips for resolving problems.

If you are using Windows or Macintosh for the first time, and as a result find it difficult to follow the procedural explanations, please refer to the manuals that came with your computer or operating system.

Troubleshooting is organized according to different operating systems. Refer to the icon(s) at the left of the title to find the items you need.



Problems common to Windows and Macintosh



Problems occurring only in Windows



Problems occurring only in Macintosh

## Problems related to the USB driver



### Cannot install the driver correctly

- **Is the CD-ROM correctly inserted into your CD-ROM drive?**  
Installation is not possible unless the CD-ROM included with the SD-80 is inserted in your CD-ROM drive. Make sure that the CD-ROM is correctly inserted into your CD-ROM drive.
- **Is the CD-ROM or the lens of the CD-ROM dirty?**  
If the CD-ROM or the lens of the CD-ROM drive is dirty, the installer may not work correctly. Clean the disc and/or lens using a commercially-available CD cleaner or lens cleaner.
- **Are you installing the software from a networked CD-ROM drive?**  
The software cannot be installed from a networked CD-ROM drive.
- **Is there sufficient free space on your hard disk?**  
Delete unneeded files to increase the amount of free space. After deleting the unneeded files, empty the recycling bin.
- **Is the SD-80 connected correctly?**  
Make sure that the USB connector of your computer is connected to the SD-80 by a USB cable. Check this, and if you are using Windows, close the **Sound and Multimedia Properties** dialog box (**Sounds and Audio Devices Properties** in Windows XP, and **Multimedia Properties** in Windows 98), re-open the same dialog box once again, and specify the audio and MIDI input/output destinations. "**MIDI input and output destinations**"(p. 19).
- **Is the power of the SD-80 turned on?**  
Make sure that the SD-80's **POWER switch** has been pressed inward. Check this, and if you are using Windows, close the **Sound and Multimedia Properties** dialog box (**Sounds and Audio Devices Properties** in Windows XP, and **Multimedia Properties** in Windows 98), re-open the same dialog box once again, and specify the audio and MIDI input/output destinations.



- Using the procedure for **“Deleting the driver”** (p. 37), delete the USB audio device driver installed in your computer, and then re-install the SD-80 driver as described in **“Installing & Setting Up the Driver (Windows)”** (p. 7). Also check whether there is any **“Other devices”** in **“Device Manager”** or **“Unknown device”** in **“Universal Serial Bus Controllers”**. If you find any, delete them.




- **Is OMS or FreeMIDI installed?**  
The SD-80 driver cannot be installed unless **OMS** or **FreeMIDI** are installed. Please install **OMS** or **FreeMIDI**. (OMS -> p. 25, FreeMIDI -> p. 28)



## **SD-80 is not detected when making OMS or FreeMIDI settings**

- **Is the SD-80 detected?**  
Turn the power of the SD-80 off, then on again.  
  
Reconnect the USB cable.  
  
If other USB devices are connected, connect only the SD-80.  
  
It is possible that the Macintosh did not correctly detect and initialize the SD-80. Leave the SD-80's USB cable connected, and restart your Macintosh. If it is still not detected, shut down your Macintosh, and then restart it.  
  
The SD-80 will not be detected if it is connected to the USB connector on the Macintosh keyboard. Please connect the SD-80 to a USB connector on the Macintosh itself.
- **Are you using only OMS?**  
OMS will not work properly if FreeMIDI is installed in the same system. Delete FreeMIDI-related files from the Extensions folder.

 **An “Unknown driver found” dialog box appears, and you are unable to install the driver**

 **“Find new hardware wizard” does not execute automatically**

 **“Find new hardware wizard” ends before the process is completed**

- **It may take about 15 seconds (or more) after the USB cable is connected for the SD-80 to be detected.**
- **Is the USB cable connected correctly?**  
Make sure that the SD-80 and your computer are correctly connected via a USB cable.
- **Is USB enabled on your computer?**  
Refer to the operation manual for your computer, and make sure that USB is enabled.
- **It has been found that in some cases, not all of the Windows 98 files required to support audio via USB are installed when a computer is shipped.**  
Please contact the manufacturer of your computer.
- **Does your computer meet the USB specifications?**  
If you are using a computer that does not fulfill the electrical requirements of the USB specifications, operation may be unstable. In this case, you may be able to solve the problem by connecting a USB hub.
- **Does “Unknown device” appear for “Other device” or “Universal serial bus controller”?**  
Use the following procedure to delete “Other device” (Universal Serial Bus Controller) “Unknown device”, and then restart your computer.
  1. In the Windows **Control Panel**, double-click System. The **System Properties** dialog box will appear.
  2. Click the **Device Manager** tab. For Windows 2000, click the **Hardware** tab, and then click the **[Device Manager]** button.
  3. Double-click “Other device” or “Universal Serial Bus Controller” to display a list of devices.
  4. From the list, select the unknown device and click **[Delete]**.
  5. In the dialog box that asks you to confirm the deletion, click **[OK]**.
  6. Verify that “Other device” or “Unknown device” is not displayed in the list, and click **[Close]** to close the dialog box.

 **“Found unknown device” appears even though you installed the driver**

If your computer or USB hub has two or more USB connectors, and you connect the SD-80 to a USB connector to which the SD-80 has never been connected before, the “Unknown device” dialog box may appear even on a computer onto which you have already installed the driver.

Refer to “Installing & Setting Up the Driver (Windows)”(p. 7), and install the driver once again. This is not a malfunction.





## Can't install/delete/use the driver in Windows XP/2000

- **Did you log on to Windows as a user with administrative privileges?**  
In order to install/delete/re-install the driver in Windows XP/2000, you must be logged into Windows as a user with administrative privileges, such as Administrator. For details, please contact the system administrator for your computer system.
- **Did you make “Driver Signing Options”?**  
In order to install/re-install the driver, you must make “Driver Signing Options”.  
(Windows XP -> p. 8, Windows 2000 -> p. 13)



## Windows XP/2000 displays a “Hardware Installation” or “Digital Signature Not Found” dialog box

- **Did you make “Driver Signing Options”?**  
In order to install/re-install the driver, you must make the settings described in “Driver Signing Options”.  
(Windows XP -> p. 8, Windows 2000 -> p. 13)



## Device Manager shows “?”, “!”, or “USB Composite Device”



## The “Insert Disk” dialog box does not appear

Use the following procedure to re-install the driver.

1. Turn off the power of your computer, and start up Windows with all USB cables disconnected (except for keyboard and mouse).
2. After Windows restarts, use a USB cable to connect the SD-80 to your computer.
3. Turn on the power of SD-80.
4. Click the Windows **[Start]** button, and from the menu that appears, choose **Settings | Control Panel**.
5. Double-click the **System** icon. The **System Properties** dialog box will appear.
6. Click the **Device Manager** tab.  
In Windows XP, select the **System Properties Hardware** tab, and click **Device Manager**.
7. Check whether you can see an indication of “?**Composite USB Device**, ?**USB Device**, !**USB Device**”, or “**USB composite device**” displayed below “**Sound, Video, and Game Controllers, Other Devices**”, or “**Universal Serial Bus Controller**”. If you find any such indication, select it and click **[Delete]**.
8. A dialog box will ask you to confirm deletion of the device. Verify the contents of the dialog box, and then click **[OK]**. In the same way, delete all indications of “?**Composite USB Device**”, “?**USB Device**”, “**USB Device**”, and “**USB composite device**” that you find.
9. If you find **EDIROL SD-80** USB Driver with a yellow “!” or a red “?” displayed beside it, delete this in the same way.
10. When you have finished deleting the unwanted devices, click **[OK]** in the **System Properties** dialog box.
11. Turn off the power of the SD-80, then delete the driver. “**Deleting the driver**”(p. 37).

- 12. Restart Windows.** Then install the driver once again.  
 (->“**Installing & Setting Up the Driver (Windows)**”(p. 7))

*\* If the problem still occurs after you have taken the above measures, please refer also to the Readme file for the USB driver. The Readme file is on the CD-ROM.*

## Problems when using the SD-80

---



### Operating system becomes unstable

- **Operation becomes unstable when the computer is started up with the SD-80 already connected**

Please start up your computer with the SD-80 disconnected, and then connect the SD-80. On a computer that uses a USB keyboard, starting up the computer with the SD-80 already connected may cause operation to become unstable. In this case, start up the computer with the SD-80 disconnected, and then connect the SD-80.



### No sound

- **Have you specified the MIDI data output destination for your operating system?**  
 You must specify the **SD-80** as the audio data output destination for your computer. For details on how to make this setting, refer to Settings and checking.  
 (Windows, “**MIDI input and output destinations**”(p. 19)/  
 Macintosh, “**OMS settings**”(p. 25), “**FreeMIDI settings**”(p. 28))
- **Are you running multiple applications?**  
 If multiple applications are running simultaneously, an error message may appear. If this occurs, click **[OK]** and exit the other applications.  
 Even if an application window is closed, it is still running if it appears in the taskbar. Be sure to exit unneeded applications displayed in the taskbar.
- **Was the driver installed correctly?**  
 In order for you to play back audio data via the SD-80, the driver must be installed. For installation and settings, refer to “**Installing & Setting Up the Driver**” (Windows, p. 7 / Macintosh, p. 23).
- **Is your audio playback equipment (e.g., stereo system) connected correctly?**  
 On its own, the SD-80 is not capable of producing sound that you can hear. Make sure that the USB connector of your computer is connected to the SD-80 by a USB cable. Make sure that the SD-80’s **OUTPUT 1** (audio output 1) jacks are connected by audio cables to the input jacks of your audio playback equipment. For details on connections, refer to “**Connections with audio equipment**”(p. 6).
- **Is the power of your audio equipment turned on?**  
 Make sure that the power is turned on for your audio equipment (e.g., stereo) and the SD-80.
- **Are the various volume settings of the SD-80 set appropriately?**  
 The front panel of the SD-80 has separate knobs that adjust the MIDI volumes. Use the **Volume knob** located on the front panel of the SD-80 to adjust the volume.

- **Is your computer in Suspend or Sleep mode?**  
If so, get your computer to resume normal operation, then exit all applications that are using the SD-80. Next, turn the SD-80's power off, then switch it on again.
- **Did you reconnect the USB cable or turn the power of the SD-80 off and on?**  
Exit all applications that are using the SD-80, and turn the power of the SD-80 off and then on once again.



- **Is OMS/FreeMIDI set correctly?**  
As described in “**OMS settings**”(p. 25) or “**FreeMIDI settings**”(p. 28), check the OMS or FreeMIDI settings. Also make sure that the device for MIDI IN/OUT is correctly selected in the MIDI settings of your MIDI sequencer software.



- **Does the PART level meter move in the SD-80 display?**  
If the PART level meter is moving but you do not hear sound, check whether the volume of the SD-80 or your speakers has been lowered. If the PART level meter of the SD-80 is not moving, recheck the connections and “**OMS settings**”(p. 25)/“**FreeMIDI settings**”(p. 28).



- **Is the OMS setup enabled?**  
If a diamond-shaped symbol is not displayed at the left edge of the title area in the OMS setup window, the setup is not enabled. From the OMS File menu, choose “Enable setup”. (“**OMS settings**”(p. 25))



- **Has your computer been set to enter Sleep mode?**  
If your computer enters Sleep mode, exit the software you are using, and then restart your computer. We recommend that you set your computer to not use Sleep mode.

## Can't play back MIDI



- **Has the MIDI device you are using been set correctly?**  
In order to record/play MIDI tracks using the SD-80, you must correctly install the SD-80 driver (“**Installing & Setting Up the Driver (Windows)**”(p. 7)). Also make sure that the input port and output port are set as follows in your software.

INPUT port	OUTPUT port
EDIROL SD-80 MIDI IN 1	EDIROL SD-80 PART A
EDIROL SD-80 MIDI IN 2	EDIROL SD-80 PART B



- **Has the MIDI device you are using been selected correctly?**  
Select either **[SD-80 Port A]** or **[SD-80 Port B]** as the MIDI output device.



- **Are the track outputs set correctly?**  
MIDI tracks to which no MIDI playback device is assigned will not be heard. If you want to play back a MIDI track, you must make sure that the MIDI device you want to use is displayed in your software as the MIDI output port. For details, refer to the owner's manual for your software.



## **Can't record MIDI**

- **Has the MIDI input device you are using been selected correctly?**  
Select either **[SD-80 MIDI InOut 1]** or **[SD-80 MIDI InOut 2]** as the **MIDI input device**.

# Deleting the driver

---

If you were unable to install the driver according to the procedure given, the SD-80 may not be recognized correctly by the computer. In this case, use the following procedure to delete the driver, and then follow the procedure in “**Installing & Setting Up the Driver**” (Windows, p. 7; Macintosh, p. 23) to install the driver once again.

## Windows XP/2000 users

In order to delete (uninstall) the driver, a user with **administrative privileges** such as **Administrator** must be logged onto Windows. For details, contact the system administrator of your computer.

1. With all USB cables disconnected, start Windows. (USB keyboard and USB mouse excepted)
2. Log on to Windows as a user with **administrative privileges** (such as **Administrator**).
3. After connecting the SD-80 to your computer via a USB cable, turn on the power of the SD-80.
4. Exit all applications before deleting the driver.
5. Open the **Control Panel**, and double-click **System**.
6. Click the **Hardware** tab, and in the “**Device Manager**” area, click [**Device Manager**].
7. Double-click “**Sound, Video, and Game Controllers**” to view the **list of devices**.
8. From the list, click “**EDIROL SD-80**” to select it. Then right-click, and from the menu that appears, select “**Delete**”.  
*\* If “EDIROL SD-80” does not appear in the list, refer to the “Can’t install/delete/use the driver in Windows XP/2000”(p. 33) in “Troubleshooting”.*
9. A dialog box will ask you to confirm that you want to delete the device. Verify the contents of the dialog box, and click [**OK**].
10. Close the **Device Manager** window, and click [**OK**] in **System Properties**.
11. Disconnect the USB cable from the SD-80.
12. Restart Windows.

## Windows Me/98 users

1. With all USB cables disconnected, start up Windows. (USB keyboard and USB mouse excepted)
2. After connecting the SD-80 to your computer via a USB cable, turn on the power of the SD-80.
3. Exit all applications before deleting the driver.
4. Open the **Control Panel**, and double-click **System**.  
\* Depending on the state of your computer, **System** may not appear in the **Control Panel**. In this case, click "**Show all control panel options**".
5. Click the **Device Manager** tab.
6. Double-click "**Sound, video, and game controllers**" to see a list of devices.
7. From the list, click "**EDIROL SD-80**" to select it, and click [**Delete**].
8. A dialog box will appear, asking you to confirm that you want to **delete the driver**. Verify the contents, and click [**OK**].
9. Click [**Close**] to close **System Properties**.
10. Disconnect the USB cable from the SD-80.
11. In **Control Panel**, click **Folder Options** and then click the **Display** tab. (In Windows 98, click **Start | Settings | Folder Options.1**.)
12. In **Detailed Settings** of the **Display** tab, remove the check mark for "**Don't display extensions of associated files**", click "**Show all files and folders**", and then click [**OK**]. (In Windows 98, this will be "**Show all files**".)
13. Click **Start | Find | Files or folders**.
14. In "**Search location**", select "**Local hard drive**". Then in "**Name of file or folder**", type "**\*0023.\***" and click [**Begin search**].
15. Of the files that are found, delete the five files **Rddp0023.dat**, **Rddv0023.driv**, **Rdvx0023.vxd**, and **Rdwm0023.sys**. If the list shows **Rdif0023.inf** or **RolandRDIF0023.INF**, delete these files as well.  
\* *Never delete any file other than the files specified here.*
16. Restart Windows.

## Macintosh users

1. Turn off the power of the SD-80.  
Also disconnect the USB cable (by which the SD-80 is connected) from your Macintosh.
2. From the **system extensions** folder, drag "**USB SD-80 Driver**" into the trash to delete it.
3. Delete **SD-80** from the **OMS Folder** inside the System folder, or drag **SD-80 Driver** from the **FreeMIDI Folder** to the trash.
4. Restart the Macintosh.

