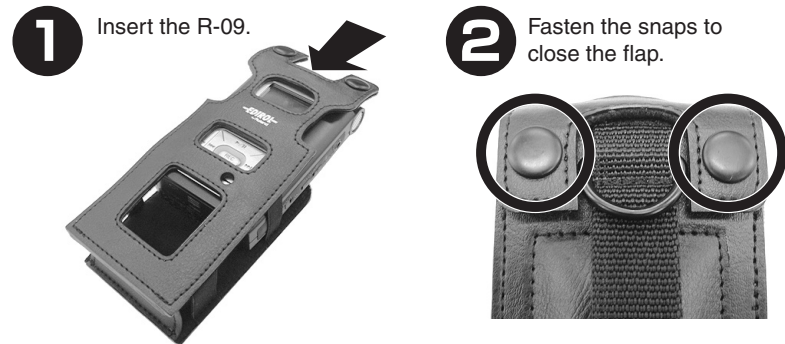
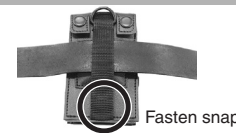


## Cover Stand Set for R-09 OP-R09C OWNER'S MANUAL

### Attaching the Cover



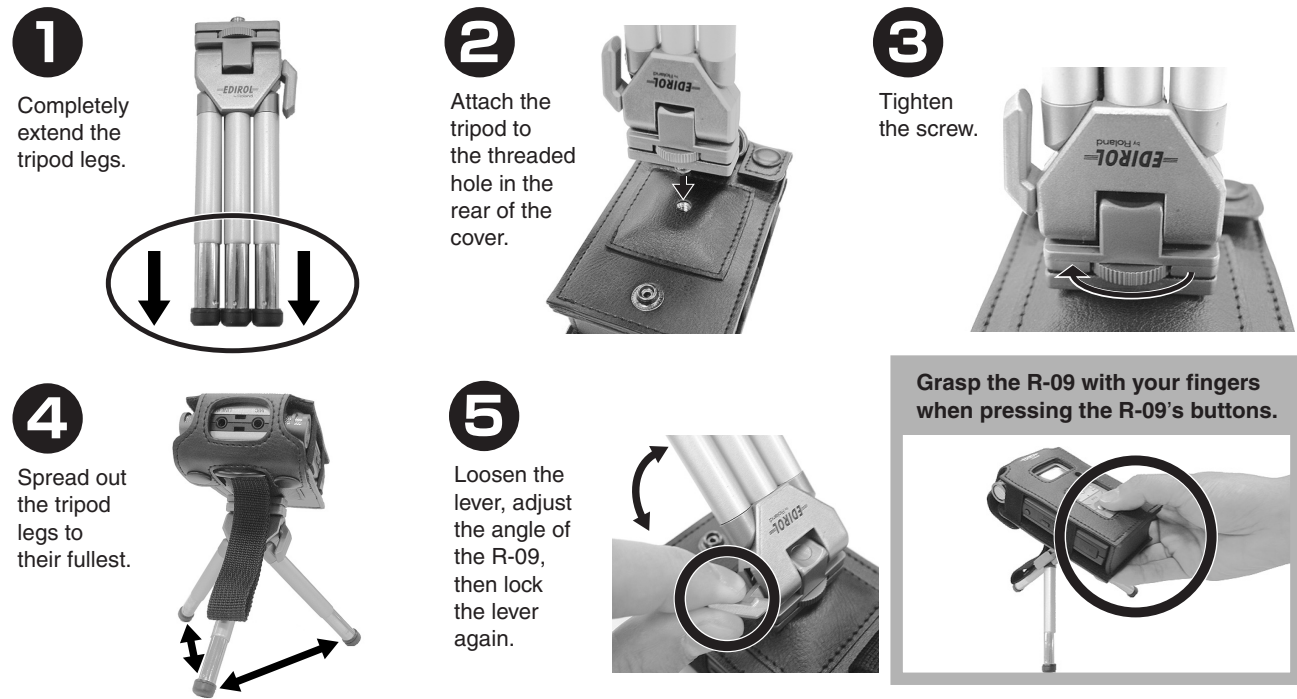
#### When Attaching to a Belt



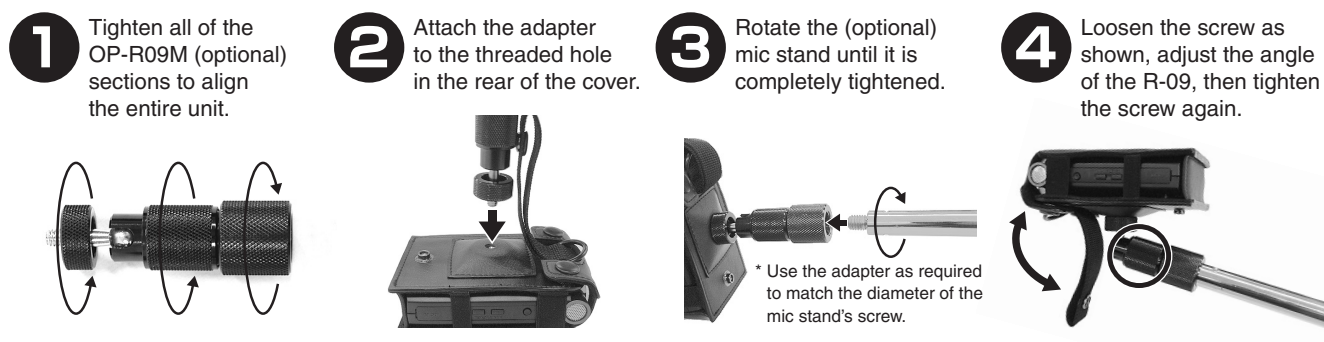
#### When Attaching to a Carrying Strap



### Attaching the Tripod



### Attaching the Mic Stand Adapter (Optional OP-R09M)



## USING THE UNIT SAFELY

### INSTRUCTIONS FOR THE PREVENTION OF FIRE, ELECTRIC SHOCK, OR INJURY TO PERSONS

#### About ⚠ WARNING and ⚠ CAUTION Notices

<b>⚠ WARNING</b>	Used for instructions intended to alert the user to the risk of death or severe injury should the unit be used improperly.
<b>⚠ CAUTION</b>	Used for instructions intended to alert the user to the risk of injury or material damage should the unit be used improperly. * Material damage refers to damage or other adverse effects caused with respect to the home and all its furnishings, as well to domestic animals or pets.

#### About the Symbols

<b>⚠</b>	The ⚠ symbol alerts the user to important instructions or warnings. The specific meaning of the symbol is determined by the design contained within the triangle. In the case of the symbol at left, it is used for general cautions, warnings, or alerts to danger.
<b>⊘</b>	The ⊘ symbol alerts the user to items that must never be carried out (are forbidden). The specific thing that must not be done is indicated by the design contained within the circle. In the case of the symbol at left, it means that the unit must never be disassembled.
<b>⚡</b>	The ⚡ symbol alerts the user to things that must be carried out. The specific thing that must be done is indicated by the design contained within the circle. In the case of the symbol at left, it means that the power-cord plug must be unplugged from the outlet.

### ALWAYS OBSERVE THE FOLLOWING

#### ⚠ WARNING

- Before using this unit, make sure to read the instructions below, and the Owner's Manual. ⚠
- Do not open or perform any internal modifications on the unit. ⚠
- Do not attempt to repair the unit, or replace parts within it (except when this manual provides specific instructions directing you to do so). Refer all servicing to your retailer, the nearest Roland Service Center, or an authorized Roland distributor. ⚠

- In households with small children, an adult should provide supervision until the child is capable of following all the rules essential for the safe operation of the unit. ⚠

- Protect the product from strong impact. (Do not drop it!) ⚠

#### ⚠ CAUTION

- Try to prevent cords and cables from becoming entangled. In addition, to prevent the equipment from toppling and falling, arrange cords and cables so they do not become pulled or snagged. Also, all cords and cables should be placed so they are out of the reach of children. ⚠

- Keep the adapter screw included with the optional special mic stand adapter in a safe place out of children's reach to prevent accidental ingestion. ⚠

### IMPORTANT NOTES

- Be sure the tripod is spread out adequately. This allows the tripod to stand with greater stability.
- Use the setup in a flat, level location.
- Use the setup only after confirming the stability of all attached devices. Avoid use in locations where wind or other conditions may cause the equipment to topple and fall.

- Always detach the device from the tripod before moving it. Carrying the device while it is still attached to the tripod may cause the device to separate from the tripod and fall.
- Do not leave the device attached to the tripod. The topple and fall, resulting in unanticipated damage to the unit.
- Take care not to allow fingers to become pinched when extending and retracting the tripod legs.
- \* Roland assumes no liability whatsoever for any damages, loss of income, or claims by any third party arising from the inappropriate use of this product.
- \* Roland assumes no liability whatsoever for any damage to the device resulting from the unit dropping or falling.

#### Placement

- Do not expose the unit to direct sunlight, place it near devices that radiate heat, leave it inside an enclosed vehicle, or otherwise subject it to temperature extremes. Excessive heat can deform or discolor the unit.

#### Maintenance

- For everyday cleaning wipe the unit with a soft, dry cloth or one that has been slightly dampened with water. To remove stubborn dirt, use a cloth impregnated with a mild, non-abrasive detergent. Afterwards, be sure to wipe the unit thoroughly with a soft, dry cloth. Do not launder or wash the entire case.
- Never use benzine, thinners, alcohol or solvents of any kind, to avoid the possibility of discoloration and/or deformation.

### Specifications

#### Tripod (two-stage extending/retracting type)

- Retracted length: 98 mm
- Overall height in use: Approx. 90 mm
- Weight: 35 g
- Max. Load: 1000 g (vertical load)

\* In the interest of unit improvement, the specifications and/or appearance of this unit are subject to change without prior notice.