

# Read me first

motion dive .tokyo console Owner's Manual



EDIROL  
by Roland

digitalstage

## motion dive .tokyo console MD-P1

04121223 '05-10-1N

## motion dive .tokyo console MD-P1 Basic Operation

The most important thing about this hardware console is that it's "easy to understand." The "motion dive .tokyo console" is designed with the same form of interface as motion dive. Operating the "motion dive .tokyo console" is extremely simple; this page contains everything there is to know about it.

For details on using the software "motion dive .tokyo" refer to the separate "motion dive .tokyo" manual.

### Assignable controls

You can assign various operations to the two knobs A (left side) and B (right side). In the Total Control Modules area, open MIDI to specify what you want to assign.

- 1 Click [MIDI].
- 2 Specify what you want to assign.

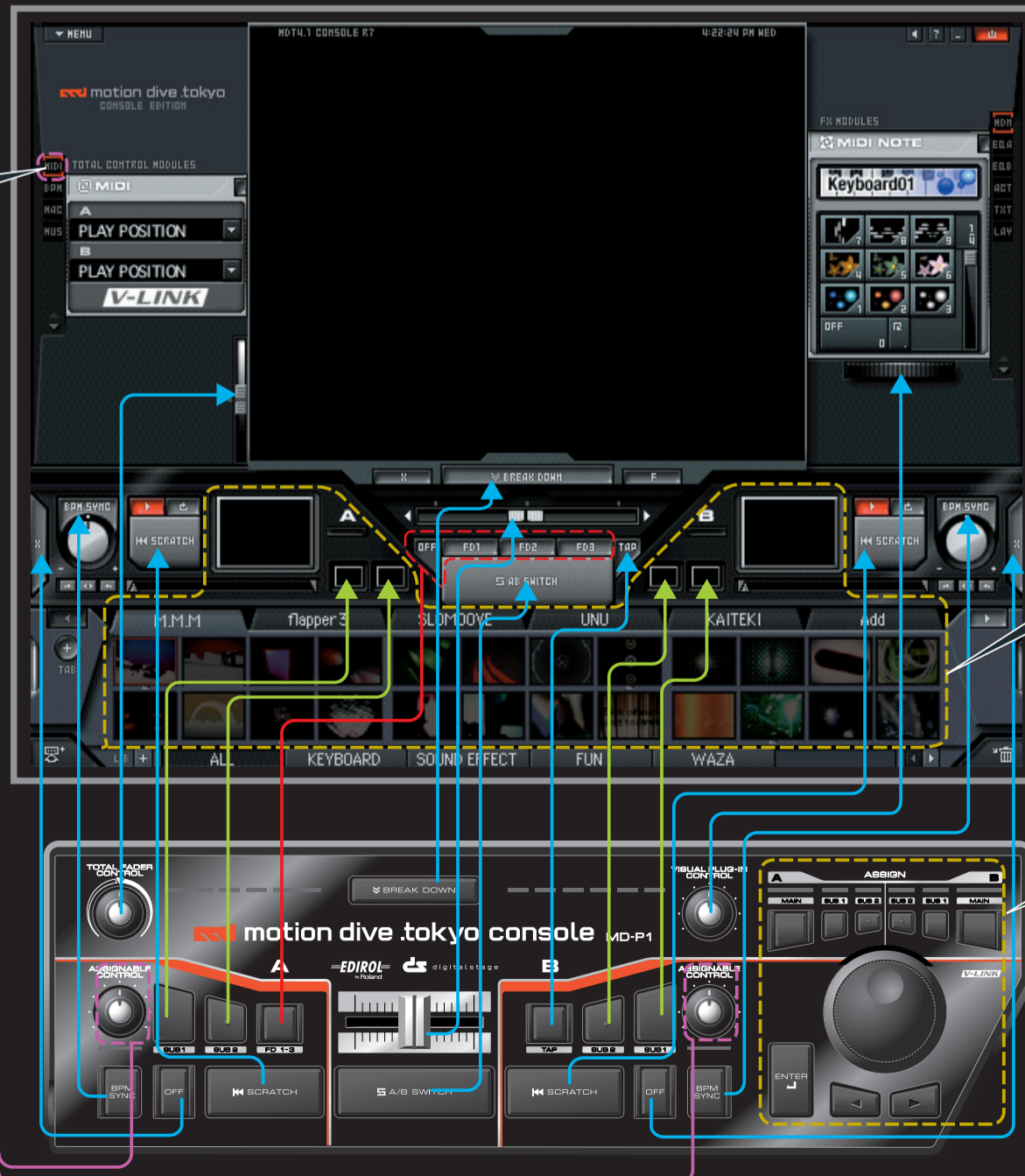


The following choices are available:

PLAY POSITION	Adjusts the playback point
SPEED CONTROL	Adjusts the speed
COLOR EQ (Fore)	Adjusts the foreground plug-in color EQ
COLOR EQ (Back)	Adjusts the background plug-in color EQ
LOOP START POSITION	Adjusts the loop start point
LOOP END POSITION	Adjusts the loop end point
BPM	Change the BPM

### Operations in conjunction with the Ctrl key

- Hold down the computer's Ctrl (control) key and turn the MD-P1's VISUAL PLUGIN CONTROL knob to change the FX MODULES.
- Hold down the computer's Ctrl (control) key and turn the MD-P1's TOTAL FADER CONTROL knob to change the TOTAL CONTROL MODULES.
- Hold down the computer's Ctrl (control) key and turn the MD-P1's ASSIGNABLE CONTROL knob to adjust the ASSIGNABLE CONTROL parameter.



The "motion dive .tokyo console MD-P1" is a dedicated controller for the "motion dive .tokyo" software. Roland provides no guarantee or support regarding its use with any software other than "motion dive .tokyo".

### Selecting a clip



# motion dive .tokyo console MD-P1

## Installation and setup

### 1 Installing the USB driver for motion dive .tokyo console "MD-P1"

#### Installing the USB driver

Welcome to the motion dive .tokyo Performance Package!  
This package consists of the motion dive .tokyo software together with the dedicated motion dive .tokyo MD-P1 hardware (which we'll refer to as the "MD-P1"), giving you the perfect VJ environment. Never again will you have to use your computer keyboard for VJ performance!  
In order to start using this package, the first thing you need to do is install the "USB driver" for the MD-P1 into your computer.

**The "USB driver" is software that lets your computer use the MD-P1. You must proceed as follows to install the driver before using a USB cable to connect the MD-P1 to your computer.**

In order to install the USB driver, you'll need the DVD-ROM that's included with this product.  
Regardless of the operating system you're using (Windows or Mac OS), insert the DVD-ROM marked "Install DVD-ROM." Navigate to the "Driver" folder of the DVD-ROM, and start up the installer (this will be Setup.exe for Windows, and MD-P1USBDriver.pkg for Mac OS) to install the USB driver.

For details on installing the USB driver, refer to "Installing the USB driver" on the back of this sheet. You must install the driver by following this procedure.

#### Uninstalling the USB driver

If you need to uninstall the USB driver, follow the instructions for "Removing the driver" in "Hardware-related FAQ" on the back of this sheet.

### 2 Installing or uninstalling motion dive .tokyo

#### Installing

To install motion dive, you'll need the DVD-ROM included with this product.  
Regardless of the operating system you're using (Windows or Mac OS), insert the DVD-ROM marked "Install DVD-ROM."  
The installer will start up, and the installation procedure will be shown on the screen.  
The explanations shown on the screen contain important information such as instructions on how to defeat installation restrictions for each operating system, so be sure to read them carefully without skipping anything.

#### Uninstalling

The procedure for uninstalling motion dive will depend on your operating system.  
o Windows: The Start menu will contain a uninstaller named "remove motion dive." Select this, and follow the instructions that appear in the screen.  
o Mac OS X: You can uninstall from the installer popup menu, or you can uninstall by dragging the "motion dive console" folder from the "Applications" folder into the trash.

As a note of caution that applies to all operating systems, the motion dive uninstaller does not delete files created by the user. If you want to completely remove all data, or to perform a clean reinstallation, you can manually drag the "My MDTCTune" folder into the trash. The "My MDTCTune" folder is located in the folder structure described below.

### 3 Folder structure

When installation is completed, the following folders and files will be created.

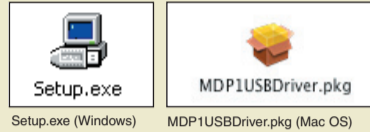
#### "motion dive console" folder (the application itself)

This contains the motion dive application itself. Normally you will not need to perform operations in this folder.

- Windows: Normally this will be created in the "c:\Program Files\digitalstage" folder.
- Mac OS X: This will be created in the "Applications" folder of your startup disk.  
In OS X, this will be installed in the "Applications" folder of the system domain.



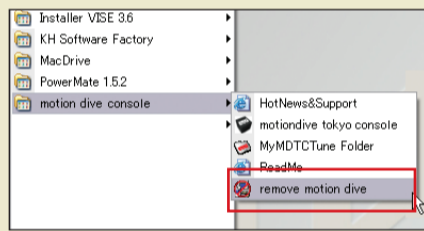
motion dive .tokyo console "MD-P1"



Setup.exe (Windows) MDP1USBDriver.pkg (Mac OS)



Installer



Uninstaller (Windows)

#### "My MDTCTune" folder structure (video, music, plug-ins, etc.)

The "My MDTCTune" folder contains the videos, still images, music, and plug-ins you will use in motion dive. You'll use this folder when you want to add plug-ins or music files, so remember its location.

Windows: Normally this will be located in the root directory of the C drive (C:\My MDTCTune).

Mac OS: This will be in the same folder as the motion dive application.

#### "Library" folder

This folder contains videos, still images, and Flash movies for use in motion dive, as well as Macro setting files. Normally you will not need to access this folder.

#### "Musics" folder

If you have MP3 format music files that you want to use with the "MUSIC PLAYER" plug-in within motion dive, you can manually add them to this folder. Initially, this folder contains several songs with bonus sounds.

#### "Plug-ins" folder

Optional plug-ins that add additional visual operations or expand the functionality of motion dive can be added to this folder. Several types of plug-ins will already be in this folder at the time of installation.

#### "Texts" folder

This folder contains patterns (text layer files) for use with the "Text plug-in" that display realtime motion typography (titles) within motion dive. You can create them yourself.

#### "Actions" folder

This folder contains Flash movies for use with the "Action plug-in." You can create them yourself.

#### "MIDI note" folder

This folder contains files for use with the "MIDI note plug-in."

### 4 Starting-up for the first time

#### Starting motion dive

Start up motion dive.

- Connect the MD-P1 to your computer before you start up "motion dive .tokyo".**  
The "motion dive .tokyo" software will not start up unless the dedicated MD-P1 hardware console is connected. (The screen will indicate "MIDI devices not found! Please connect with MD-P1" and the program will exit.)  
If the above error appears even though the MD-P1 is connected, it is possible that the USB driver is not installed correctly. Please read "Hardware-related FAQ" on the other side of this sheet, and re-install the USB driver.
- Don't disconnect the MD-P1 from your computer while "motion dive .tokyo" is running.**  
This may cause the system to stop operating correctly.
- Turn off the standby (suspend) and sleep settings of your computer.**  
If your computer enters standby (suspend) or sleep modes while "motion dive .tokyo" is running, it may stop working correctly. If your computer should enter standby (suspend) or sleep modes, you should exit the "motion dive .tokyo" software when the computer resumes operation, and then re-connect the MD-P1 to your computer.

#### User registration

The user registration screen will appear the first time you start up the software. Please follow the on-screen instructions to complete your user registration.

[ User registration procedure ]

To register as a user, please follow the steps listed on the red "Product registration card" (Digital Stage) included in the package.

The serial number (11 digit install code) required for user registration is printed on this card.



#### Exiting the software

From the "motion dive .tokyo" menu, choose "Quit" or click the "x" button located in the upper right of the window.

#### Using the "motion dive .tokyo" software

For details on using the "motion dive .tokyo" software, refer to the separate "motion dive .tokyo Owner's Manual."

#### Using the MD-P1 hardware

For details on using the MD-P1 hardware, refer to "Basic operation of the motion dive .tokyo console" in this leaflet.

Opening the "My MDTCTune" folder

In Windows, you can use a shortcut key to open the "My MDTCTune" folder from the "Start menu" in a single operation.

In Macintosh, this folder is located in the same level as the application.



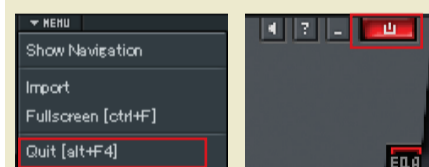
Windows (Start menu)



Macintosh



User Registration Window



Owner's Manual



motion dive .tokyo Owner's Manual

Before using this unit, carefully read the sections entitled: "USING THE UNIT SAFELY" and "IMPORTANT NOTES." These sections provide important information concerning the proper operation of the unit. Additionally, in order to feel assured that you have gained a good grasp of every feature provided by your new unit, Owner's manual should be read in its entirety. The manual should be saved and kept on hand as a convenient reference.

Microsoft and Windows are registered trademarks of Microsoft Corporation.

Windows® is known officially as: "Microsoft® Windows® operating system."

The screen shots in this document are used in compliance with the guidelines of the Microsoft Corporation.

Apple and Macintosh are registered trademarks of Apple Computer, Inc.

QuickTime and the QuickTime logo are trademarks or registered trademarks of Apple Computer, Inc., used under license.

Mac OS is a trademark of Apple Computer, Inc.

All product names mentioned in this document are trademarks or registered trademarks of their respective owners.



Copyright to this document and all of the software, data, creative works, photographs, music, and printed matter accompanying this product is the property of the developing companies, the artists themselves, and the photographers. Copying or commercial use of this material other than as allowed by the copyright holder is forbidden.

Copyright ©2005 digitalstage inc. All right reserved. Made in Japan.

Copyright ©2005 ROLAND CORPORATION

All rights reserved. No part of this publication may be reproduced in any form without the written permission of ROLAND CORPORATION.



## Installing the USB Driver Windows XP/2000 users

1. With the MD-P1 left unconnected, start up Windows. Do not connect the MD-P1 to the computer until you reach Step 12.

Disconnect all USB cables except for a USB keyboard and USB mouse (if used).  
Log onto Windows using a user name that has administrative privileges (such as Administrator).

2. Open the **System Properties** dialog box.

### Windows XP users

1. Click the Windows start menu, and from the menu, select Control Panel.
2. In "Pick a category," click "Performance and Maintenance."
3. In "or pick a Control Panel icon," click the System icon. Depending on your setup, the System icon may appear directly in the Control Panel (Classic view). If so, double-click the System icon.

### Windows 2000 users

1. Click the Windows Start menu, and from the menu that appears, select Settings | Control Panel.
2. In Control Panel, double-click the System icon.

3. Click the Hardware tab, then click [Driver Signing]. The Driver Signing Options dialog box will open.

4. In the Driver Signing Options dialog box, select "Ignore," then click [OK].  
If the current setting is "Warn" or "Block," change this to "Ignore." Then, when you've finished installing the driver, change it back to the original setting.

5. Click [OK] to close the System Properties dialog box.

6. Exit all currently running software (applications). Also close any currently open windows. If you are using virus checking or similar software, you must exit all of these programs as well.

7. Insert "Install DVD-ROM" into your computer's DVD-ROM drive.

If the message "Windows can perform the same action each time you insert a disk or connect a device with this kind of file" appears, click [Cancel].

8. From the Windows start menu, choose "Run...." The "Run..." dialog box will appear.

9. In the Open field of the Run dialog box, type the following and click [OK].

D: \Driver\setup.exe

The drive name is "D:" in the example shown here, but may be different on your system. Use the drive name for your DVD-ROM drive.

10. The Driver Setup dialog box will appear. Click [Next].

11. To begin the installation, click [Next] once again. Installation will begin.

### Windows XP users

If "Driver Signing Options" in step 4 is set to anything other than "Ignore," a dialog box with an "!" or "x" symbol will appear. If a [Continue Anyway] button is displayed, click [Continue Anyway] to proceed with the installation. If you are unable to continue, click [OK] and repeat the driver installation from step 1.

### Windows 2000 users

If "Driver Signing Options" in step 4 is set to anything other than "Ignore," a dialog box indicating "Digital Signature Not Found" will appear. If a [Yes] button is displayed, click [Yes] to proceed with the installation. If you are unable to continue, click [OK] and repeat the driver installation from step 1.

The "Ready to install the driver" dialog box will appear.

12. Connect the MD-P1 to your computer.



A message of "Found New Hardware" will appear. Please wait.

This unit is equipped with a protection circuit. A brief interval (a few seconds) after connecting the MD-P1 is required before the unit will operate normally.

### Windows XP users

1. The Found New Hardware Wizard dialog box will appear.  
If the message "Connect to Windows Update to search for software?" appears, choose "No" and then click [Next].
2. Make sure that "EDIROL MD-P1" is indicated. Then, choose "Install the software automatically [Recommended]" and click [Next].  
If "Driver Signing Options" in step 4 is set to anything other than "Ignore," a dialog box with an "!" symbol will appear. Click [Continue Anyway] to proceed with the installation.

### Windows 2000 users

If "Driver Signing Options" in step 4 is set to anything other than "Ignore," a dialog box indicating "Digital Signature Not Found" will appear. Click [Yes] to proceed with the installation.

13. The Completing the Found New Hardware Wizard dialog box will appear. Click [Finish].

14. In the Driver Setup dialog box, click [Close].

If the Change System Settings dialog box appears, click [Yes]. Windows will restart automatically.

If you changed the "Driver Signing Options" setting in step 4, restore the original settings after Windows has restarted.

This completes driver installation.

## Installing the USB Driver Mac OS X users

If the "Authenticate" dialog box appears during the installation, input the password and click "OK."

What you actually see on your computer screen may be different, depending on your computing environment and the operating system you're using.

1. With the MD-P1 disconnected, start up the Macintosh.

Disconnect all USB cables except for a USB keyboard and USB mouse (if used).

2. Exit all currently running software (applications).

If you are using virus checking or similar software, be sure to exit it as well.

3. Insert "Install DVD-ROM" into the DVD-ROM drive of your Macintosh.

4. In the **Driver** folder of the DVD-ROM, double-click **MDP1USBDriver.pkg**.



A message such as "This Installer package needs to..." may appear. Click "Continue."

5. The display will indicate "Welcome to the EDIROL MD-P1 Driver Installer." Click [Continue].

6. The display will indicate "Select a Destination." Click the drive in which the operating system is installed to select it, and then click [Continue].

Select your startup disk as the drive.

7. The display will indicate "Easy Install." Click [Install] or [Upgrade].

8. The display will indicate "Installing this software requires you to restart your computer when the installation is done." Click [Continue Installation].

9. The display will indicate "The software was successfully installed." Click [Restart] to restart your computer.

10. Connect the MD-P1 to your Macintosh.



- Connect the cable to the USB connector of the Macintosh itself, not to the USB connector of the keyboard.
- This unit is equipped with a protection circuit. A brief interval (a few seconds) after connecting the MD-P1 is required before the unit will operate normally.
- The MD-P1 will not work in the Classic environment of Mac OS X. Use it when the Classic environment is not running.

## Hardware-related FAQ

### Problems with the "motion dive .tokyo" software

If you are experiencing problems with the "motion dive .tokyo" software, please refer to the "FAQ" in the separate "motion dive .tokyo" manual.

If you experience problems, read this chapter first. It contains tips for solving most problems.

For details on operating your Windows or Macintosh computer, refer to the owner's manual of the computer and operating system you are using.

### When motion dive .tokyo is started up, it indicates "MIDI devices not found! Please connect with MD-P1." and exits

#### Is the MD-P1 connected correctly?

motion dive .tokyo will not start up if the "MD-P1" is not connected. If the above error appears even though the MD-P1 is connected to your computer, it may be that the USB driver is not installed correctly. Read "Problems related to the USB driver" (below) and reinstall the USB driver.

#### Is the driver name correct?

motion dive .tokyo recognizes the following driver name.

Windows version: EDIROL MD-P1  
Mac version: MD-P1

#### Mac OS X users:

The driver name will be "MD-P1" at the time of installation, but please be aware that if you intentionally rename the driver, motion dive .tokyo will be unable to recognize the MD-P1.

### Problems related to the USB driver

#### Can't install the driver correctly

Install the MD-P1 driver once again as described in "Installing the USB Driver".

#### Is the MD-P1 connected correctly?

Make sure that the USB connector of your computer is connected to the MD-P1.

#### Could any other USB device be connected?

Before you install, disconnect all USB devices except for your mouse and keyboard.

#### Could other software or resident software (such as antivirus programs) be running?

Installation may not be successful if other programs are running. Be sure to close all other programs before installation.

#### Is the DVD-ROM correctly inserted into your DVD-ROM drive?

Installation is not possible unless the DVD-ROM included with the MD-P1 is inserted in your DVD-ROM drive. Make sure that the DVD-ROM is correctly inserted into your DVD-ROM drive.

#### The included DVD-ROM cannot be read by a CD-ROM drive

Please provide an external DVD-ROM drive.

#### Are you attempting to install from a networked DVD-ROM drive?

You cannot install from a networked DVD-ROM drive.

#### Is the DVD-ROM or the lens of the DVD-ROM drive dirty?

If the DVD-ROM or the lens of the DVD-ROM drive is dirty, the installer may not work correctly. Clean the disc and/or lens using a commercially-available DVD cleaner or lens cleaner.

#### Is your computer's power-conservation mode turned off?

If power-conservation settings are enabled on your computer, please disable any such settings. For the procedure, refer to the owner's manual of your computer.

#### Is there sufficient free space on your hard disk?

Delete unneeded files to increase the amount of free space. After deleting the unneeded files, empty the recycling bin.

#### Does your computer or USB hub have sufficient power supply capacity?

The MD-P1 cannot be connected if insufficient power is supplied to it. Check whether one of the following cases apply.

- If you are using the MD-P1 with a notebook computer that is running on its battery, operation may be unreliable with some models of computer. If this is the case, connect the AC adaptor to your notebook computer.
- The power conservation mode of your computer may limit the power that is supplied to USB. Check the settings of your computer.
- In some cases, the MD-P1 cannot be used with a bus-powered hub (a hub that does not contain a power supply). Please use a self-powered hub (a hub that contains a power supply).

#### Is USB enabled on your computer?

Refer to the operation manual for your computer, and make sure that USB is enabled.

#### Does your computer meet the USB specifications?

If you are using a computer that does not fulfill the electrical requirements of the USB specifications, operation may be unstable. In this case, you may be able to solve the problem by connecting a USB hub.

#### In the Device Manager, do you see "Other device," "Unknown device," or a device for which "?", "!" or "x" is displayed? (Windows)

If the driver installation could not be successfully completed, the installed driver may remain in an incomplete state.  
Re-install the driver. (→"Installing the USB Driver")

#### Windows XP/2000 displays a "Hardware Installation" or "Digital Signature Not Found" dialog box

#### Did you make "Driver Signing Options"?

In order to install/re-install the driver, you must make the settings described in "Installing the USB Driver."

#### You are asked to install the driver file even though you installed the driver (Windows)

#### Did you connect the MD-P1 to a different USB connector than the one you used when installing the driver?

If your computer or USB hub has two or more USB connectors, and you connect the MD-P1 to a different USB connector, you may be asked for the driver file even though the driver has already been installed in your computer. (Such a response does not indicate a malfunction.)  
Proceed as follows to install the driver.

1. With the MD-P1 left unconnected, start up your computer.
2. Connect the MD-P1 to the computer.

#### Windows XP:

1. The Found New Hardware Wizard dialog box will appear.  
If the message "Connect to Windows Update to search for software?" appears, choose "No" and then click [Next].
2. Choose "Search for the best driver in these locations" and click [Next].  
If a dialog box with an "!" or "x" symbol will appear, click [Continue Anyway] to proceed with the installation. If you are unable to continue, click [OK] and repeat the driver installation. (→"Installing the USB Driver")

#### Windows 2000:

If a dialog box indicating "Digital Signature Not Found" will appear, click [Yes] to proceed with the installation. If you are unable to continue, click [OK] and repeat the driver installation. (→"Installing the USB Driver")

3. The Completing the Found New Hardware Wizard dialog box will appear. Click [Finish].

4. In the Driver Setup dialog box, click [Close].  
If the Change System Settings dialog box appears, click [Yes]. Windows will restart automatically.

#### "Find new hardware wizard" does not execute automatically "Find new hardware wizard" ends before the process is completed "Found unknown device" appears even though you installed the driver (Windows)

#### Is the USB cable connected correctly?

Make sure that the MD-P1's USB cable and your computer are correctly connected.  
It may take about 15 seconds (or more) after the USB cable is connected.

#### Does your computer or USB hub have sufficient power supply capacity?

The MD-P1 cannot be connected if insufficient power is supplied to it. Check whether one of the following cases apply.

- If you are using the MD-P1 with a notebook computer that is running on its battery, operation may be unreliable with some models of computer. If this is the case, connect the AC adaptor to your notebook computer.
- The power conservation mode of your computer may limit the power that is supplied to USB. Check the settings of your computer.
- In some cases, the MD-P1 cannot be used with a bus-powered hub (a hub that does not contain a power supply). Please use a self-powered hub (a hub that contains a power supply).

#### Is USB enabled on your computer?

Refer to the operation manual for your computer, and make sure that USB is enabled.

#### Does your computer meet the USB specifications?

If you are using a computer that does not fulfill the electrical requirements of the USB specifications, operation may be unstable. In this case, you may be able to solve the problem by connecting a USB hub.

