

# CR-1604 ADD-ONS

## XLR10•MIXERMIXER•ROTOPOD•REMOTE FADER

### XLR10 EXPANDER



**1. GENERAL CONFIGURATION.** The component shall provide an additional 10 Balanced Microphone Inputs for the Mackie Designs CR - 1604 16-channel Mic/Line Mixer. Component shall attach to the CR-1604, forming a single, physically and electronically integrated component.

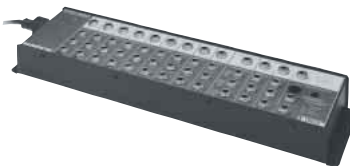
**2. INPUTS/OUTPUTS.** The component shall include on its rear panel, electronically balanced mic inputs using female XLR-3-type connectors to accept nominal levels of from  $-48\text{dBu}$  to  $+14\text{dBu}$ . Each channel shall have a rotary Sensitivity Control adjustable from  $-4\text{dB}$  to  $-48\text{dB}$ . There shall be a phantom power supply with separate switch to provide  $+43/48\text{V DC}$  to all mic input connectors for remote powering of condenser microphones.

**3. PHYSICAL CONFIGURATION.** The component shall be grey-black with aluminum/steel chassis, which shall be mechanically connected by metal screws and electronically connected by ribbon cable to the CR-1604. The XLR10's dimensions shall be 2.1" tall by 17.34" wide (including screw heads) by 2.6" deep.

**4. SPECIFICATIONS.** In addition to specifications previously cited, the XLR10 shall meet or exceed the following performance criteria: Frequency Response, 20Hz to 40kHz  $\pm 1\text{dB}$ ; Distortion, less than 0.025%, 20Hz-20KHz; Mic Preamp E.I.N.,  $-129\text{dBm}$ ; .

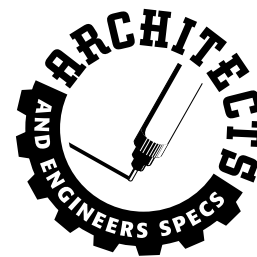
The component shall be a Mackie Designs XLR10 for the CR-1604 Mixer.

### MIXERMIXER



**1. GENERAL CONFIGURATION.** The combiner shall mix the outputs from up to three Mackie Designs CR-1604 mixers (or equivalent) and provide a single set of combined outputs. The combiner shall be capable of being mounted horizontally or vertically via integral mounting tabs, or may be placed on a table. The combiner shall be entirely self-contained including power supply.

**2. INPUTS/OUTPUTS.** The combiner shall have standard tip/sleeve unbalanced jacks to accommodate THREE INPUTS EACH for the following: AUX 1 through 6, ALT 3 and ALT 4, Monitor, stereo headphones (tip=left, ring=right) and Left and Right Main Inputs. All inputs



### MORE INFORMATION

THESE SPECIFICATIONS ARE AVAILABLE ON 3.5" PC & MAC FORMAT DISK IN POPULAR WORD PROCESSOR FORMATS

CALL 800/258-6883  
FAX 425/487-4337  
OUTSIDE THE U.S., CALL  
425/487-4333

# MACKIE®



## CR-1604 ADD-ONS

shall accept nominal levels of from -10dBu to +22dBu. The combiner shall provide combined OUTPUTS for AUX 1 through 6, ALT 3 and ALT 4, Monitor, stereo headphones (tip=left, ring=right) and Main Balanced/Unbalanced Outputs for Left, Right and Mono. Maximum Main Combined Output level shall be +28dBu balanced, and +22dBu unbalanced; all other Outputs shall be +22dBu maximum. Left and Right Main Insert jacks (tip send, ring return) shall be provided. The component shall include a female DIN-type socket on its front panel to receive the connector from a Mackie Designs Remote Fader and shall have a recessed push switch to activate the (optional) Remote Fader.

**3. PHYSICAL CONFIGURATION.** The combiner shall be grey-black steel and aluminum, and shall have dimensions of 6.7" wide by 4.1" deep by 1.65" tall. The weight shall be 5 pounds.

**4. SPECIFICATIONS.** In addition to specifications previously cited, the combiner shall meet or exceed the following performance criteria: Frequency Response, 20Hz to 40kHz ± 1dB; Distortion, less than 0.025%, 20-20kHz; Hum & Noise -94dB (ref 4dBu operating level 20kHz NBW); Dynamic Range 112dB.

The combiner shall be a Mackie Designs MixerMixer.

Because Mackie Designs constantly endeavors to improve its products with new components and manufacturing methods, all specifications are subject to change without notice. Rev 1.2 © 1995-1998 Mackie Designs. "Mackie." is a registered trademark of Mackie Designs Inc.



MACKIE DESIGNS INC. • 16220 WOOD-RED RD. N.E.  
WOODINVILLE • WA • USA • PHONE TOLLFREE 800/258-6883  
FAX 425/487-4337 • OUTSIDE THE U.S., PHONE 425/487-4333

### REMOTE FADER



**1. GENERAL CONFIGURATION.** The fader shall connect to the Mackie Designs MixerMixer to control the master output level of all Main Left and Right inputs that are plugged into the MixerMixer. The fader shall consist of a 100mm dB-calibrated fader with 6-ft connecting cord terminated in male DIN-type plugs. The fader shall be capable of being physically attached to the Mackie Designs CR-1604 Mic/Line Mixer.

**2. PHYSICAL CONFIGURATION.** The fader shall be grey-black steel and shall have dimensions of 1.4" wide by 7.5" tall by 2.3" deep. The weight shall be 2 pounds.

The fader shall be a Mackie Designs Remote Fader for the MixerMixer.

### ROTOPOD BRACKET



**1. GENERAL CONFIGURATION.** The bracket set shall consist of one steel bracket, two rack rails and accompanying hardware. It shall be designed to allow mounting of the Mackie CR-1604 Mic/Line Mixer's Input/Output Pod and Main Mixing Console so that input/output

jacks are on the same plane as the Main Mixing Console for either tabletop or rack-mount use. The rack rails will provide structural reinforcement as well as enable mounting in standard 19" racks in either flush or recessed configuration. When installed on the CR-1604, the bracket set shall place the mixer in such a way that there shall be no gap between the bottom of the mixer and the next lower rack space, but there shall be a gap between the top of the mixer and the next full rack space, enabling cable pass-through. In total, the mixer with RotoPod bracket set installed will occupy 10 rack spaces including the cable pass-through area.

**2. PHYSICAL CONFIGURATION.** The bracket set shall be black painted steel. When the bracket set is added, the CR-1604's dimensions shall be 15.8" tall by 17.34" wide (including screw heads) by 4.8" deep or 5.5" deep in recessed mounting configuration. The bracket set rack rails shall replace those provided with the CR-1604 and shall include two sets of attachment holes allowing either flush mounting or recessed mounting for knob protection, which shall add an extra 0.7" to the mixer's overall depth measurement in RotoPod configuration. The bracket set weight shall be 3 pounds, creating a total CR-1604 weight of 21 pounds with the bracket set installed. In addition to all necessary mounting screws, the bracket set shall include two additional, self-adhesive "feet" for attachment to the bottom of the bracket for tabletop use.

The bracket set shall be a Mackie Designs RotoPod for the CR-1604.

