

TonePort UX8®

Quick Start Guide

Démarrage Rapide

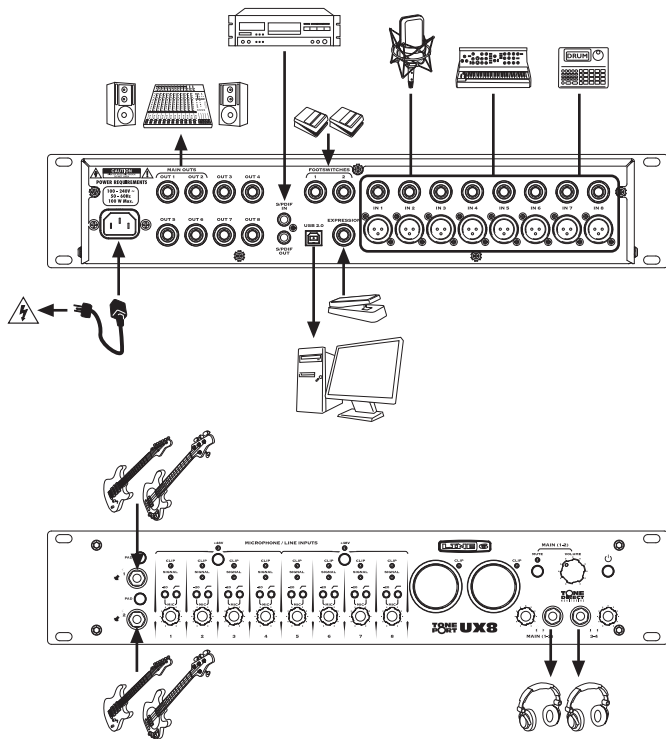
Blitzstart

Ingebruikname

Inicio Rápido

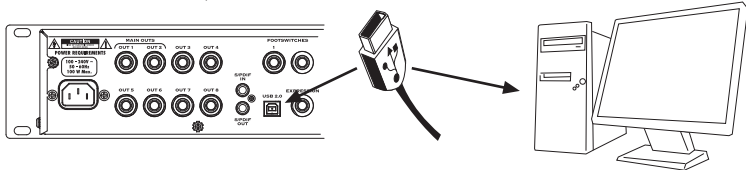


Hook Up

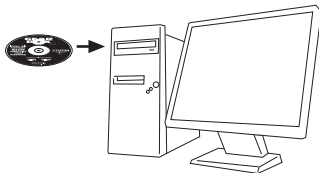


Install Software

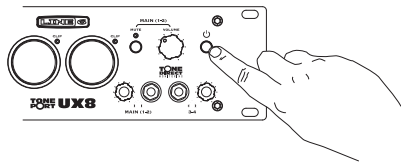
1. Connect USB cable. Do not power on the TonePort UX8.



2. Insert GearBox Install disc, launch install application, and follow the instructions.



3. Power up your TonePort UX8 when instructed by the installer.



Activate the GearBox Plug-In

1. The GearBox Plug-In is an add-on that comes free with the TonePort UX8. To activate it, launch Line 6 Monkey (installed with the GearBox installer), click the 'Optional Add-Ons' tab, then click the 'Activate' button (Monkey should instruct you to do this when running it for the first time). If you do not have a user account you will need to create one now by selecting 'New User'.

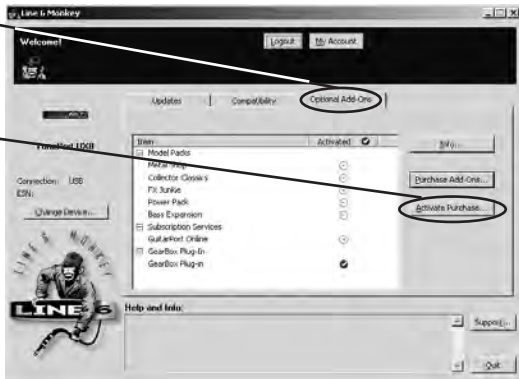


Mac: Applications/Line 6/Monkey

Win: Start → All Programs → Line 6 → Tools → Monkey

2. Click the 'Optional Add-Ons' tab.
3. Click 'Activate Purchase...' to download your add-on capabilities and follow instructions.

NOTE: At any time you can check for possible updates to your TonePort UX8 by clicking the 'Updates' tab - Monkey makes it easy!



Using the GearBox Standalone Application

The GearBox standalone application lets you play and record your instruments with processed tone and incredibly low latencies thanks to Line 6's ToneDirect™ Monitoring.

1. Launch Gearbox.



Mac: Applications/Line 6/GearBox

Win: Start → All Programs → Line 6 → GearBox → GearBox

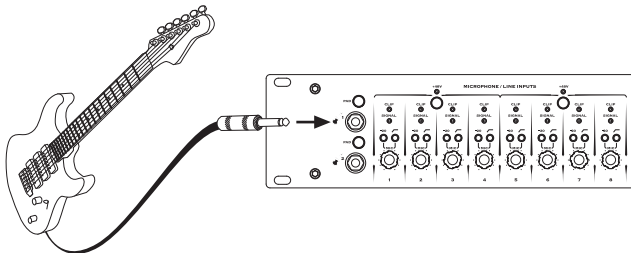
2. Select input source 'Inst 1'



3. Select a Tone Preset.



4. Plug guitar into TonePort UX8's Instrument 1 Input jack and enjoy!



Using GearBox Sends With Your Recording Software

GearBox provides 2 stereo sends to your recording software, which are labeled 9-10 and 11-12 in GearBox, as well as in your recording software.

Send 9-10 is the fully processed GearBox signal.



Send 11-12 can be set to Pre or Post within GearBox, enabling you to record a partially processed or unprocessed signal.



Using The GearBox Plug-In

The GearBox Plug-In provides the same models and presets as the GearBox standalone application.



Try the “Pre-Amp” Models on tracks for recording vocals, drums or acoustic instruments.

If GearBox Plug-In is not yet activated, see “Activate the GearBox Plug-In” in this guide.

TIP: You can use the GearBox standalone application for ToneDirect™ Monitoring when recording guitar or bass tracks, but record only the unprocessed instrument input. Afterwards, you can use the GearBox Plug-In to adjust your tone to accommodate your mix as it evolves.

See the GearBox help for more info!

Register and Get Free Stuff

Included with TonePort UX8 is a handy, postage-paid card for you to send back to us to register your purchase. It is very important you either fill that registration card out right now and send it to us in the mail, or register online at www.line6.com/register. How come? Well, for one thing, it gets you all set up for warranty service should you have a warranty issue with your TonePort UX8.

Line 6, the Line 6 logo, GearBox and TonePort UX8 are trademarks of Line 6, Inc.
TonePort UX8 Quickstart Guide © 2007 Line 6, Inc.