

**LINE 6**



**VERSION 1.01**

# **INSTALLER GUIDE**

Mac<sup>®</sup> OS X, Windows<sup>®</sup> XP<sup>®</sup> & Windows<sup>®</sup> Vista<sup>®</sup>



# Table of Contents

<b>Preparing to Install</b> .....	<b>1•1</b>
<b>Installation on Mac® OS X</b> .....	<b>2•1</b>
iLok Users .....	2•6
Uninstalling POD Farm and Device Drivers .....	2•7
<b>Installation on Windows®</b> .....	<b>3•1</b>
iLok Users .....	3•12
Uninstalling POD Farm and Other Components.....	3•13
<b>Line 6 Monkey &amp; Additional Resources</b> .....	<b>4•1</b>
Purchasing POD Farm Plug-In .....	4•2
Product Activation & Authorization.....	4•2
Additional Resources.....	4•4

*Line 6, POD Farm, POD Farm Plug-In, POD, POD X3, POD X3 Live, PODxt, PODxt Pro, TonePort, GearBox, GearBox Plug-In, Line 6 Monkey, ToneDirect Monitoring, GuitarPort, FBV, Variax, Line 6 Edit and Custom Tone are trademarks of Line 6, Inc. All other product names, trademarks, and artists' names are the property of their respective owners, which are in no way associated or affiliated with Line 6.*

Copyright © 2008 Line 6, Inc.



# PREPARING TO INSTALL

---

This document will walk you through the installation process for the Line 6 POD Farm 1.01 software, POD Farm Plug-In, POD Farm Plug-In for iLok, audio interface drivers, and the Line 6 Monkey utility. Let's get started...

## Quit All Other Applications

It is strongly recommended that you exit all other programs before running the POD Farm installation program.

## Restart Before Re-Installing

If you need to re-install POD Farm, you should restart your computer just before you run the POD Farm installer. This ensures that your computer has not retained older system or driver files, which can cause conflicts when re-installing.

## Where's the Installer?

Line 6 POD Studio devices include a software CD in the original box - this CD includes the POD Farm installer for both Mac<sup>®</sup> and Windows<sup>®</sup> computers. Just insert the POD Farm CD into your CD-ROM drive. On Mac<sup>®</sup>, the disk image will appear in Finder and on your Desktop. On Windows<sup>®</sup>, the installer will usually start automatically. If it doesn't, then browse the CD and double click on the POD Farm v1.xx.exe file.

If you cannot find the Line 6 CD, or if you want to install POD Farm/POD Farm Plug-In for use with other Line 6 USB audio interface or for your iLok, no worries! We always have the POD Farm installer available online:

- **If you already have the Line 6 Monkey software utility installed on your computer...** You can connect your Line 6 USB device and launch Line 6 Monkey. This will scan your system and point you to the latest version of POD Farm available for you (as well as any other recommended updates, or optional Add-Ons).

For more details on Line 6 Monkey, check out the [Line 6 Monkey & Additional Resources](#) chapter!

- **If you do not yet have Line 6 Monkey on your computer...** You can download the POD Farm installer by going to [www.line6.com/software/](http://www.line6.com/software/). Be sure to choose your specific Line 6 USB device from the **Product** selector, "POD Farm" from the **Software** selector, and the specific Mac<sup>®</sup> or Windows<sup>®</sup> operating system version your computer uses from the **OS** selector.

The POD Farm installer will also install the latest Line 6 Monkey version, as well as device drivers for your Line 6 hardware - it is not necessary for you to download these items separately.



## System Requirements

We recommend that you read the separate, *POD Farm 1.01 Release Notes* document for the full, detailed System Requirements, as well as up to date info on compatibility with other hardware and software. This document can be found within the [Line 6 Online Knowledge Base](#), or on the [POD Farm Online Help](#) page.

POD Farm 1.01 requires the following computer operating systems:

- Windows<sup>®</sup> XP<sup>®</sup> Home or Professional, with Service Pack 2 (or later), 32 and 64 bit versions
- Windows<sup>®</sup> Vista<sup>®</sup> Home, Business or Ultimate Edition, 32 and 64 bit versions
- Mac<sup>®</sup> OS X 10.4.x (Tiger<sup>®</sup>)
- Mac<sup>®</sup> OS X 10.5.x (Leopard<sup>®</sup>)

## What if I Have Line 6 GearBox Installed?

If you already have the Line 6 GearBox/GearBox Plug-In software installed on your Mac<sup>®</sup> or Windows<sup>®</sup> computer, then it is recommended that you update to the latest GearBox 3.7 version (or a later version, if available) so that it will co-exist happily with POD Farm. To get the latest GearBox version, connect your Line 6 USB device and launch [Line 6 Monkey](#), or go directly to the [Line 6 Software Downloads](#) page and choose “GearBox” to download the latest installer.

Once you’ve updated GearBox to version 3.7 or later, simply run the POD Farm installer following the steps in this document. You can still use either software (and you can use either GearBox or POD Farm Plug-In as well). Your GearBox Tone Presets will remain intact, and can also be utilized within POD Farm. It is **not** supported to run both POD Farm in Standalone operation and GearBox at the same time.



# INSTALLATION ON MAC<sup>®</sup> OS X

To follow are the steps for installing POD Farm 1.01 on a Mac<sup>®</sup> OS X computer. Remember to disconnect the USB cable from your Line 6 hardware before running the installation. Note that you'll need to restart your computer to finish the POD Farm installation, so now is a good time to save any open documents and exit all other programs.

## Launch Screen

The first screen you will see after opening the "POD Farm 1.01.dmg" file is as follows. Double-click on **POD Farm.mpkg**, as instructed to launch the installer.





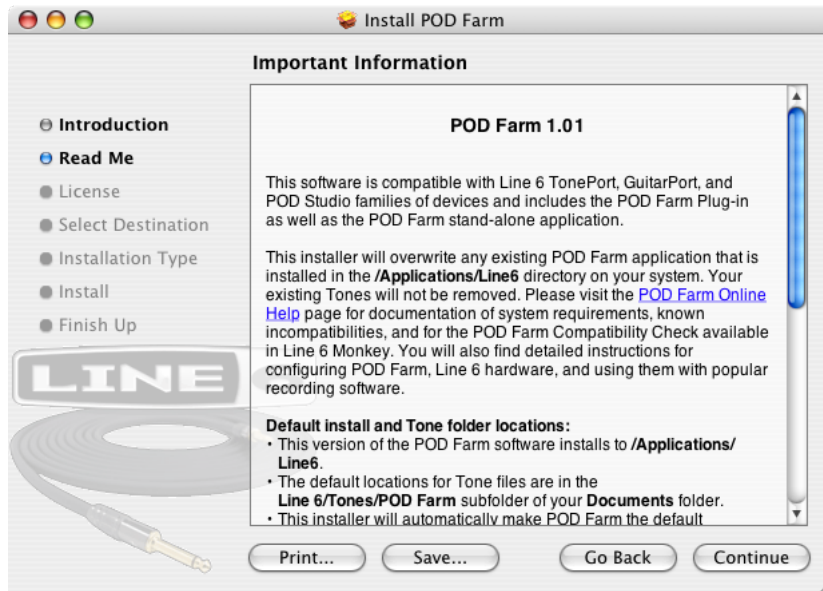
## Welcome

When the installer starts, you will see a Welcome dialog - read the text and click **Continue**.



## Read Me

A dialog with the POD Farm “Read Me” text is presented next. It’s called “Read Me” for a good reason! Please review the information carefully, and click **Continue** when ready to proceed.





## License Agreement

The installer presents you with the License Agreement. After carefully reading the Agreement, select **Agree** if you consent to the terms of this license. Then click **Continue** and the Installer will allow you to proceed. If you do not agree with the license, you cannot install POD Farm.



## Select Destination

Your computer will ask you to pick a destination volume where it will install POD Farm, as shown below. You'll want to choose your internal hard drive. Click **Continue** when ready to proceed.





## Easy Install vs. Custom Install

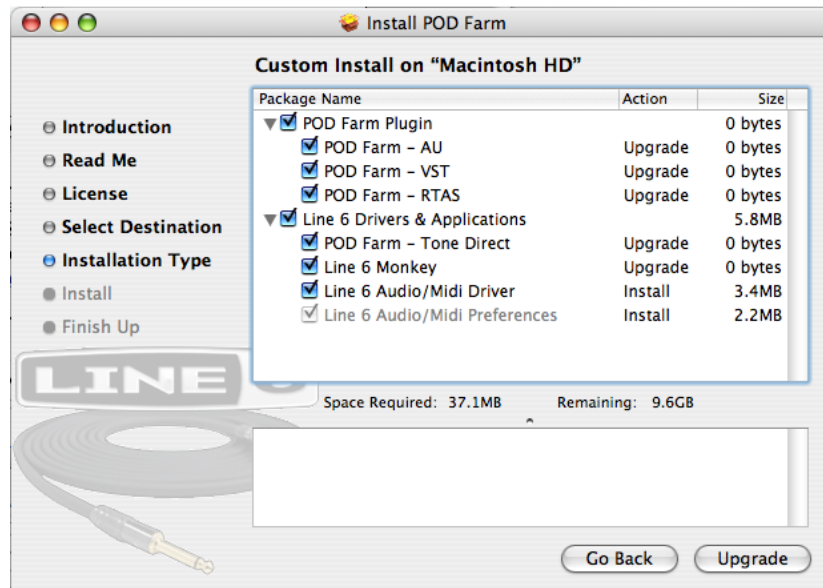
For most users, Easy Install is the way to go since this installs all components - for the Easy Install, simply select the **Upgrade** button. The installer will install POD Farm, POD Farm Plug-In\*, all necessary Line 6 drivers, and Line 6 Monkey.



\* Note that POD Farm Plug-In requires authorization before you will be able to use it on your computer. The authorization “License Key” for POD Farm Plug-In is included for POD Studio devices, and is offered for all other TonePort, GuitarPort, POD X3 and PODxt devices as an optional Add-On. The POD Farm Plug-In License is also sold for iLok USB key devices. For info on Plug-In authorization on Line 6 USB devices, please see the [Line 6 Monkey](#) section. For adding the POD Farm iLok License to your iLok USB key, please see the *POD Farm User Guide*, which can be downloaded from the [POD Farm Online Help](#) site. Or, head on over to the [Line 6 Online Store](#) for more about POD Farm Plug-In and other optional Add-Ons.

For you advanced users and other smart-alecky types, clicking **Customize** will allow you to pick the specific items you want installed. For details, select an item in the top pane and its description appears in the lower pane. Once you’ve selected the items you want, click **Continue** to proceed.





By default, you'll see that all items are checked here, and it is OK to just install everything if you really are not sure which items you may need. Basically, these are the guidelines:

- **If you have a Line 6 USB POD Studio device**, then you'll want to keep all items checked (the POD Farm Plug-In license is already included on your POD Studio device!)
- **If you have a Line 6 TonePort or GuitarPort device**, and have purchased, or are to be purchasing, the POD Farm Plug-In, then you'll want to keep all items checked. If you will not be using POD Farm Plug-In, then you can uncheck all the Plug-In items. Or, if you'll be using only some of the POD Farm Plug-In formats for your audio host software, then you can uncheck the ones you do not need (AU, VST or RTAS).
- **If you have a POD X3 device**, then you'll want to keep all items checked except for the POD Farm Tone Direct item, since it does not run with POD X3 devices. Note that the POD Farm Plug-In license is available for free if you own any POD X3 device, so you will want to install the Plug-In format(s) you'll be using (AU, VST, or RTAS).
- **If you have a PODxt device**, then you'll want to keep all items checked except for the POD Farm Tone Direct item, since it does not run with PODxt devices. Most likely, you have purchased POD Farm Plug-In (or you probably would not be installing POD Farm at all!) You will want to install the Plug-In format(s) you'll be using (AU, VST, or RTAS).
- **If you have POD Farm Plug-In for iLok**, then you'll want to keep all items checked except for the POD Farm Tone Direct item, and the Line 6 Audio/MIDI Driver, since these both are for Line 6 USB audio devices only. You will want to install the Plug-In format(s) you'll be using (AU, VST, or RTAS).

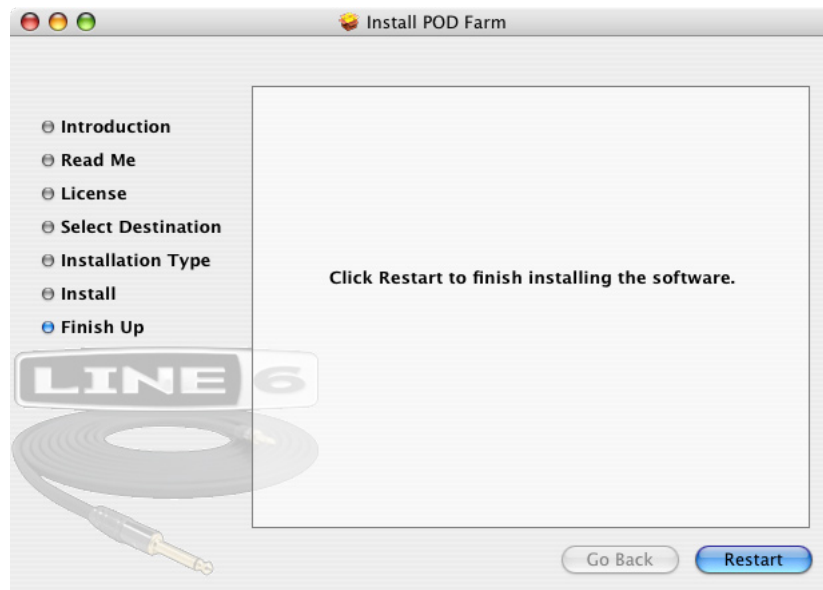
### Install - Authenticate

You may be prompted to enter your Mac® Name and Password to "Authenticate". Enter them in and click OK. The installation process will then run until completed.



## Finish

And...tada! You're done. After the installer performs its magic, you'll be prompted to **Restart** your computer for the changes to take effect.



Once you've restarted your computer, connect your Line 6 hardware directly to your Mac's USB port (it is not recommended to connect to a USB hub with your Line 6 hardware).

## Run Line 6 Monkey

It is recommended that you next run Line 6 Monkey to allow it to check your system and see if there are any other available updates for your system. Please go on ahead to the [Line 6 Monkey & Additional Resources](#) chapter for more information.

## iLok Users

If you have purchased POD Farm Plug-In for your iLok USB key, then, if you have not already done so, you will need to download the POD Farm Plug-In License to your iLok key. If you need some help with this process, please grab the *POD Farm User Guide* from the [POD Farm Online Help](#) site.

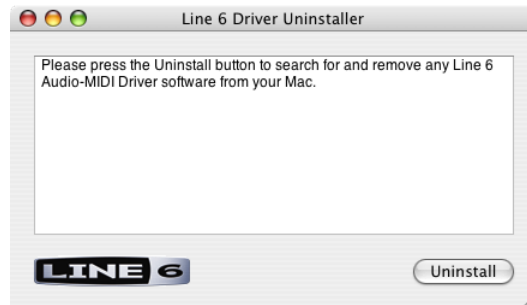


## Uninstalling POD Farm and Device Drivers

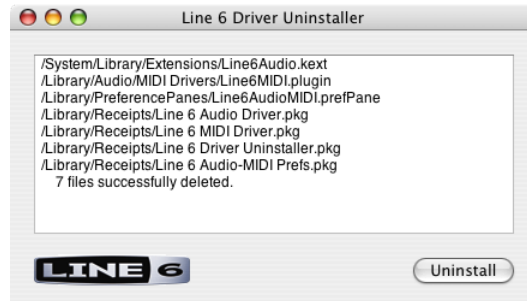
To remove the POD Farm application from your computer, simply move the **POD Farm.app** file from the Applications/Line6 folder into the Trash. This will not remove your saved POD Farm Preset Tones since they are saved by default within the Documents/Line6 directory (unless you manually saved them in a different location).

To uninstall the Device Drivers for Line 6 POD Studio, TonePort, POD X3, PODxt and GuitarPort devices, run the **Line 6 Driver Uninstaller.app**, which is found in the Applications/Line6/Drivers folder. Follow these steps...

Click the **Uninstall** button.



Enter your Mac Name and Password and click **OK** - the uninstaller will run its course.



Once the brief uninstall process completes, go to the **File** menu and quit the Line 6 Uninstaller.



# INSTALLATION ON WINDOWS®

To follow are the steps for installing POD Farm on all versions of Windows® XP® or Windows® Vista®.

## Windows® XP® and Windows® Vista®

The installation process is very much the same whether you are installing POD Farm on Windows® XP® or Vista® - We've pointed out where there are differences in the following steps.

## Welcome

When the installer starts, you will see a Welcome dialog.

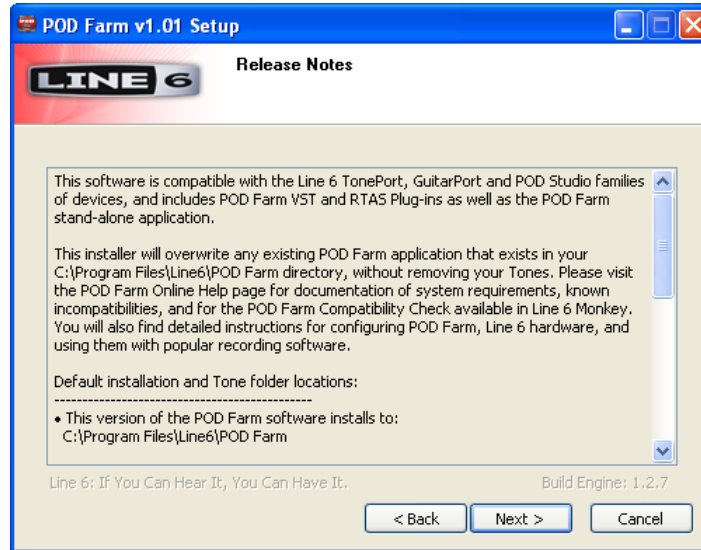


Click **Next** to continue.



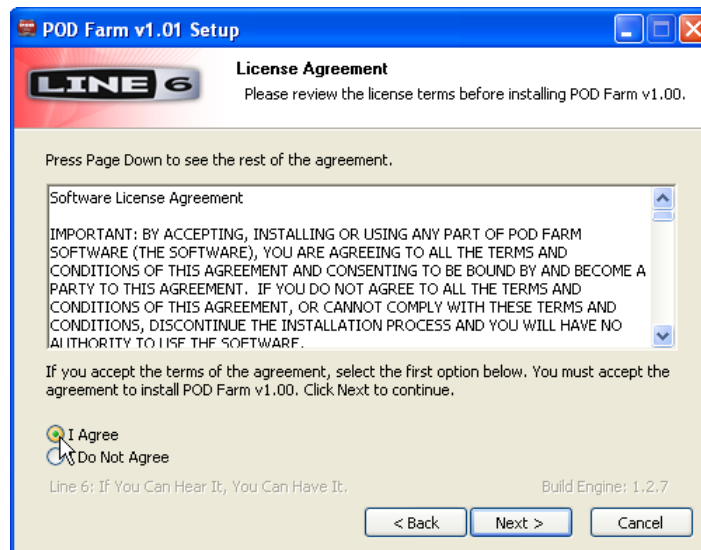
## Release Notes

A dialog with detailed Release Notes is presented. Read it carefully and click **Next** when ready to proceed.



## License Agreement

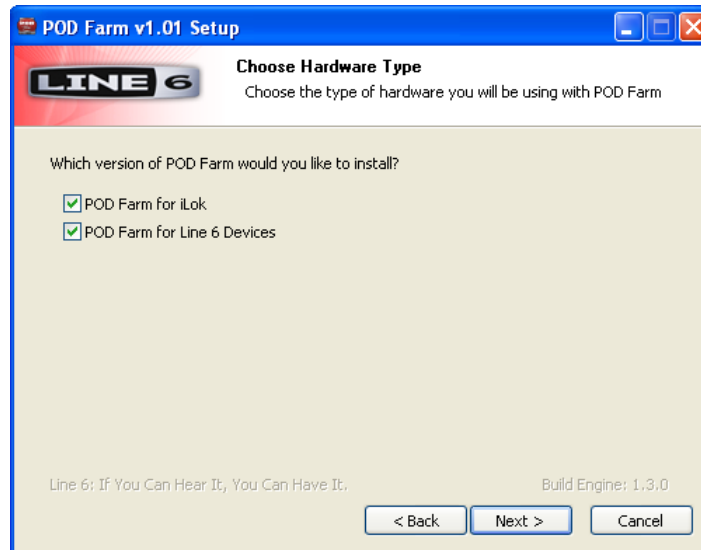
The installer presents you with a License Agreement that you will need to agree to in order to install and use POD Farm. After carefully reading the license, select the **I Agree** option if you consent to the terms of this license, then click **Next**. If you do not agree with the license, the installation will be cancelled.





## Choose Hardware Type

Here, you'll need to choose the appropriate items for the type of hardware you are to be using with POD Farm/POD Farm Plug-In...

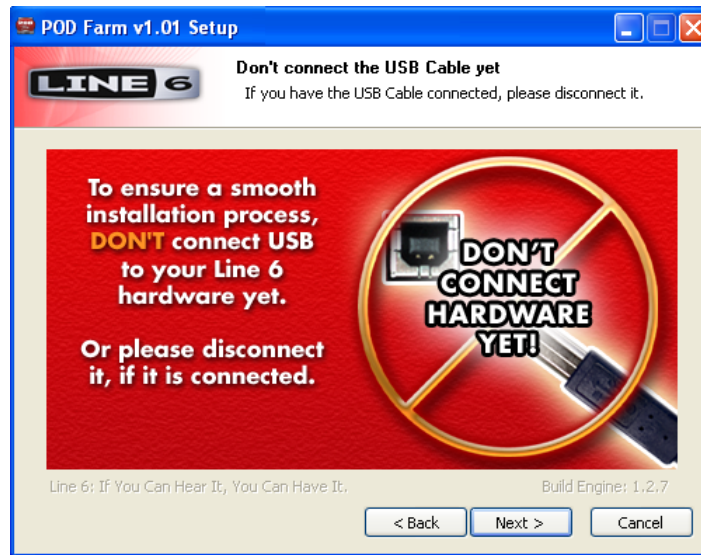


- If you have purchased POD Farm Plug-In for iLok, then you'll only need to check the "POD Farm for iLok" item. This installs only the POD Farm Plug-In.
- If you are to be connecting any Line 6 USB audio device (POD Studio, TonePort, GuitarPort, POD X3 or PODxt) then you will only need to check the POD Farm for Line 6 Devices item. This installs the audio device drivers as well as POD Farm and POD Farm Plug-In items.
- If by chance you are to be using both an iLok and a Line 6 device, then check both boxes.

You'll have more options to customize the installation of these components in the following steps.

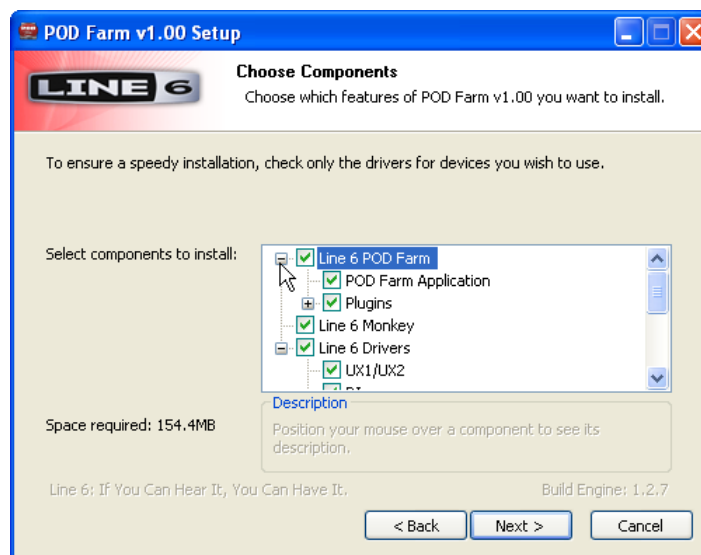
## Disconnect Your Device

Just another friendly reminder... you'll need to disconnect your Line 6 hardware. Click **Next** once you're sure the USB cable is not connected:



## Choose Components to Install

The selectable components that appear in this step depend upon the options you selected in the previous “Choose Hardware Type” screen...



By default, you'll see that all items are checked here, and it is OK to just install everything if you really are not sure which items you may need. To follow are the specifics:

- **If you have a Line 6 USB POD Studio device**, then you'll want to keep all items checked\*. (The POD Farm Plug-In license is already included on your POD Studio device!)
- **If you have a Line 6 TonePort or GuitarPort device**, and have purchased, or are to be purchasing, the POD Farm Plug-In, then you'll want to keep all items checked\*. If you will not be using POD Farm Plug-In, then you can uncheck all the Plug-In items. Or, if you'll be using only one of the POD Farm Plug-In formats (VST or RTAS) for your audio host software, then you can uncheck the one you do not need.



- **If you have a POD X3 device**, then you'll want to keep all items checked except for the POD Farm Tone Direct item, since it does not run with POD X3 devices\*. Note that the POD Farm Plug-In license is available for free if you own any POD X3 device, so you will want to install the Plug-In format(s) you'll be using (AU, VST, or RTAS).
- **If you have a PODxt device**, then you'll want to keep all items checked except for the POD Farm Tone Direct item, since it does not run with PODxt devices\*. Most likely, you have purchased POD Farm Plug-In (or you probably would not be installing POD Farm at all!) You will want to install the Plug-In format(s) you'll be using (AU, VST, or RTAS).
- **If you have POD Farm Plug-In for iLok**, then you'll see only the options for selecting the VST or RTAS Plug-In formats. You can deselect one or the other if you are not to be needing both for your DAW host software.

\* If you are installing on Windows Vista, then you'll need to select the individual driver for your Line 6 device - see next item.

- **Drivers:**
  - **On Windows® XP®** - All Drivers are selected by default, and it is fine to just install all of them and XP will use the one it needs, or you can select just the one for your device.
  - **On Windows® Vista®** - No Drivers are selected by default and it is recommended to select only the Driver for your specific Line 6 hardware type, otherwise the installation will take a bit longer for each additional selected Driver.
- **POD Farm Plug-In** - You may not need both these types, but no harm in leaving both selected either. VST is the format you want for all Windows® "host" audio software other than Digidesign Pro Tools. RTAS is the format needed if you are using any Pro Tools version.

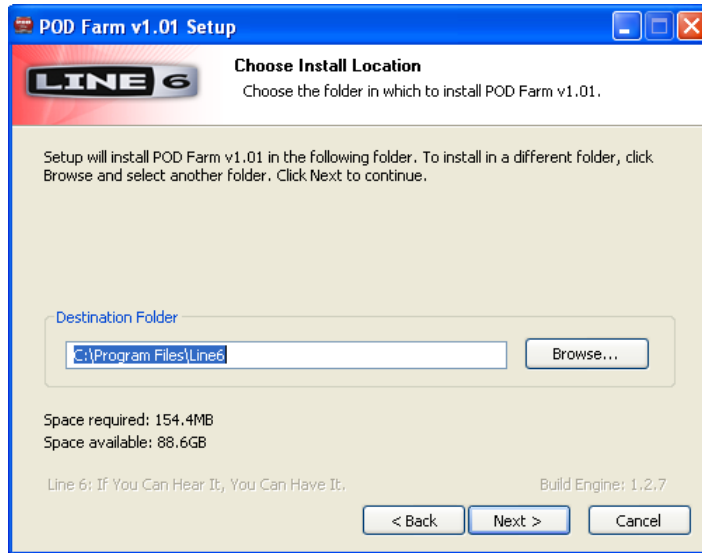
Note that POD Farm Plug-In requires authorization before you will be able to use it on your computer. The authorization "License Key" for POD Farm Plug-In is included for POD Studio devices, and is offered for all other TonePort, GuitarPort, POD X3 and PODxt devices as an optional Add-On. The POD Farm Plug-In License is also sold for iLok USB key devices. For info on Plug-In authorization on Line 6 USB devices, please see the [Line 6 Monkey](#) section. For adding the POD Farm iLok License to your iLok USB key, please see the *POD Farm User Guide*, which can be downloaded from the [POD Farm Online Help](#) site. Or, head on over to the [Line 6 Online Store](#) for more about POD Farm Plug-In and other optional Add-Ons.

- **Line 6 Monkey** - This is an important utility that provides automatic, online update checks, authorizations, and downloads for your system. Monkey is selected for you automatically. If Monkey does not need updating, its checkbox remains unchecked.

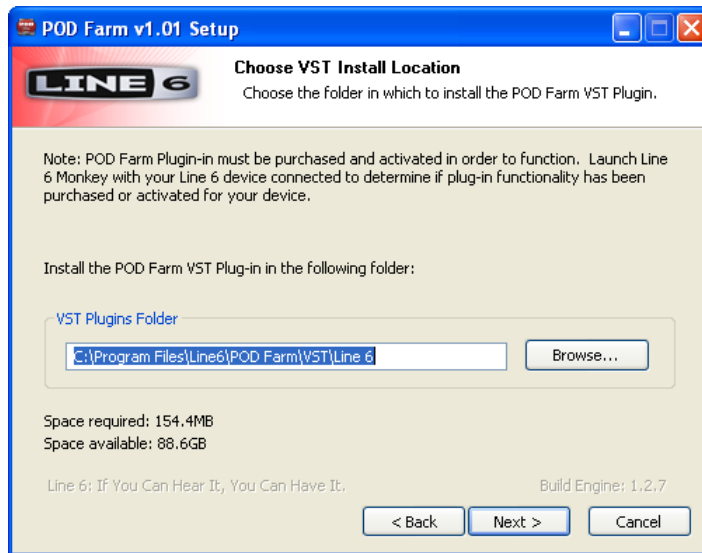
## Choose Install Location

If you'd like to install the POD Farm application in the standard default location, just click the Install button. If you'd like to choose another location, click Browse:



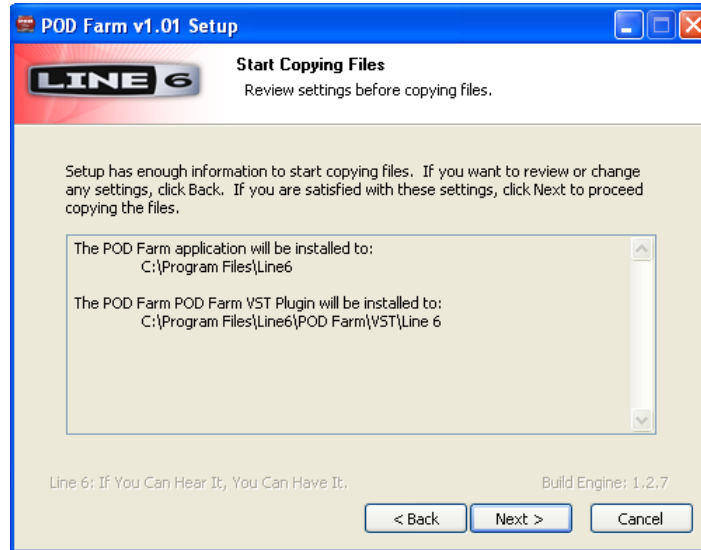


The installer next prompts you where you would like the POD Farm VST Plug-In installed. By default, it is installed to `\Program Files\Line6\POD Farm\VST\Line 6`. If installed here, you might need to point your host audio software to this directory to find POD Farm Plug-In (typically, the host software offers a Preference for adding a VST Directory - see your hosts's documentation). Optionally, you can click **Browse** and select an existing, common VST directory.



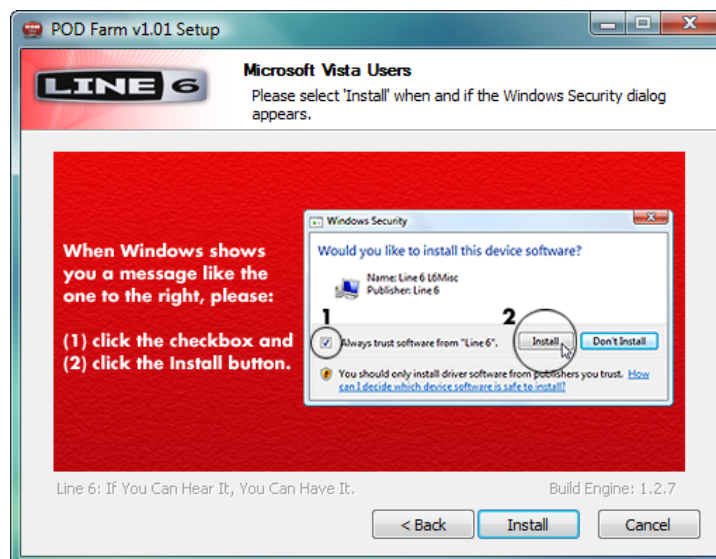


Just to make sure you are happy with where you want the POD Farm application and Plug-In installed, you will be shown the settings you chose to confirm their locations before the Installer goes to work. Isn't that thoughtful? Click the **Back** button to make changes, otherwise click **Next** to keep these settings and proceed.



### Note For Windows® Vista® Users

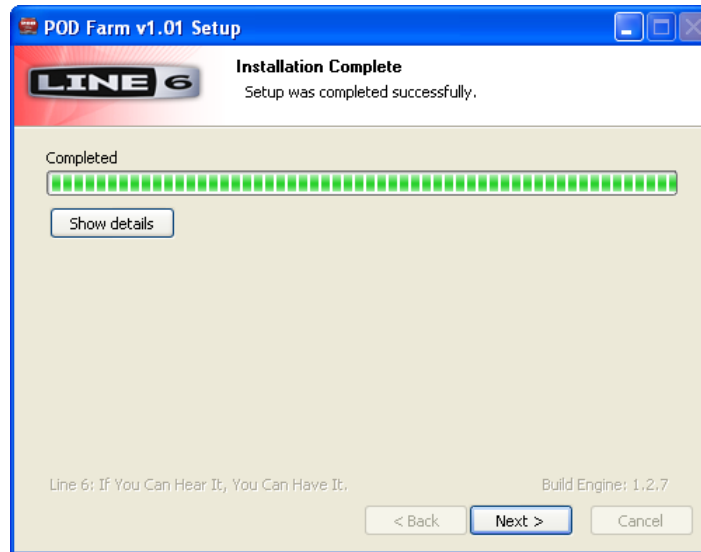
If this is your first time installing Line 6 software using Windows® Vista®, you may be periodically asked for permission to continue the installation (see below). Simply click the **Install** button each time to continue with the rest of the POD Farm installation. Or, you can check the “**Always trust software from Line 6**” option in the prompt and Vista will allow the rest of the installation to proceed without further interruption.





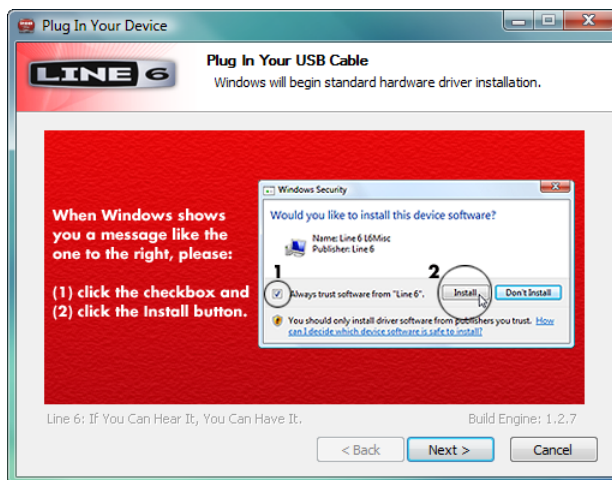
## Allow Installation to Complete

Allow the POD Farm installation process do it's thing – it will inform you once the installation has completed successfully. Click **Next** to continue.



## Connect your Device

If you checked one or more Driver components for a Line 6 USB audio device in the previous “Choose Components” screen, you will next be prompted to connect the USB cable from your Line 6 device to your computer. Plug the USB cable in and wait for the Windows<sup>®</sup> hardware installation process.



Windows Vista



Windows XP



## Windows® Vista® Hardware Installation

Once you've connected your Line 6 USB hardware to the computer, click **Next** on the above dialog and Vista will install the hardware automatically. A status indicator will appear in the bottom right corner of the Windows® Vista® screen informing you when this process starts, and once it completes successfully. Vista users can skip to the [Desktop Shortcuts and File Associations](#) step.

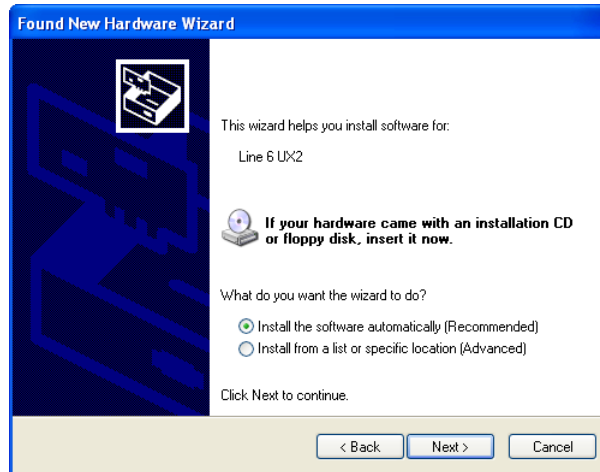


## Windows® XP® - New Hardware Wizard

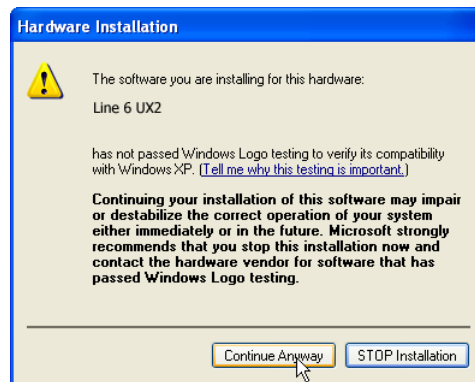
No need to click Next on the previous dialog yet. As soon as you've connected your Line 6 USB hardware to the computer, XP automatically detects a new USB device and launches a Windows **Found New Hardware Wizard** dialog. Since there is no need to connect to Windows® Update for this process, choose the **No, not this time** option and click the **Next** button to install the appropriate drivers.



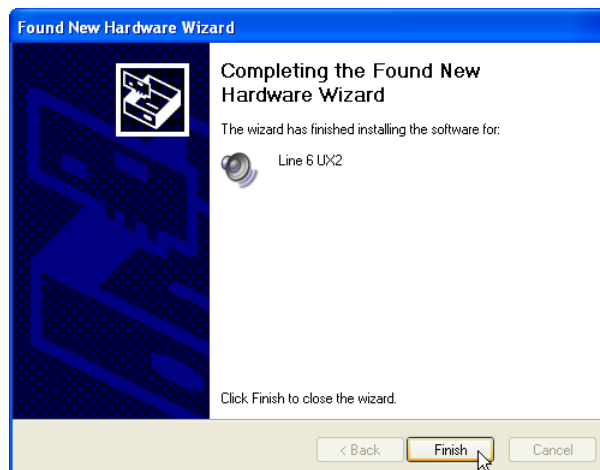
The next screen should already be set to **Install the software automatically** - just click the **Next** button to continue.



When presented with the next alert dialog, simply click the **Continue Anyway** button to ignore this message and continue the installation.



Allow the driver installation process to complete. You will be prompted once the Hardware Wizard is done – click the **Finish** button.





Once the Driver installation completes, you'll see a notification at the bottom right of your screen.

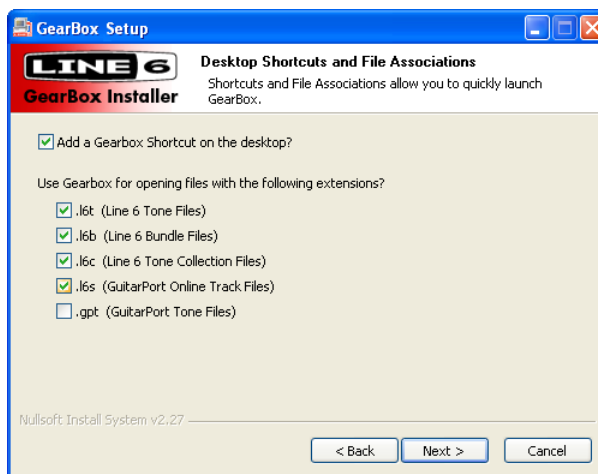


You will now be back at the **Plug in Your Device** screen – in this screen, click **Next** to proceed.



## Desktop Shortcut and File Associations

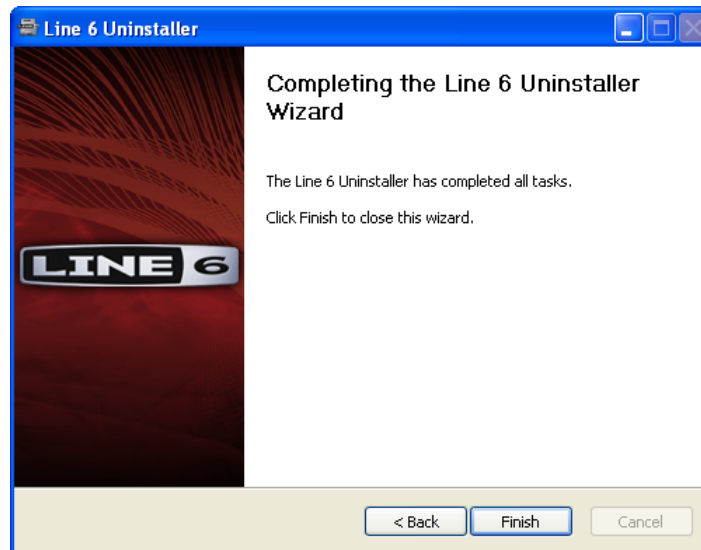
Next you are prompted if you would like a Shortcut icon for the POD Farm to be added to your Windows® desktop. You can also check all the file types that you would like to be “associated” with the POD Farm software (meaning, if you double click one of these types of files within Windows®, it knows to launch the POD Farm in Standalone operation automatically and loads the Tone file). Choose your options and then click **Next**.





## Finish

All the components you selected have been installed. Click the **Finish** button to exit the installer.



## Run Line 6 Monkey

It is recommended that you next run Line 6 Monkey to allow it to check your system and see if there are any other available Updates for your system. Please go on ahead to the next chapter to read about [Line 6 Monkey](#).

## iLok Users

If you have purchased POD Farm Plug-In for your iLok USB key, then, if you have not already done so, you will need to download the POD Farm Plug-In License to your iLok key. If you need some help with this process, please grab the *POD Farm User Guide* from the [POD Farm Online Help](#) site.

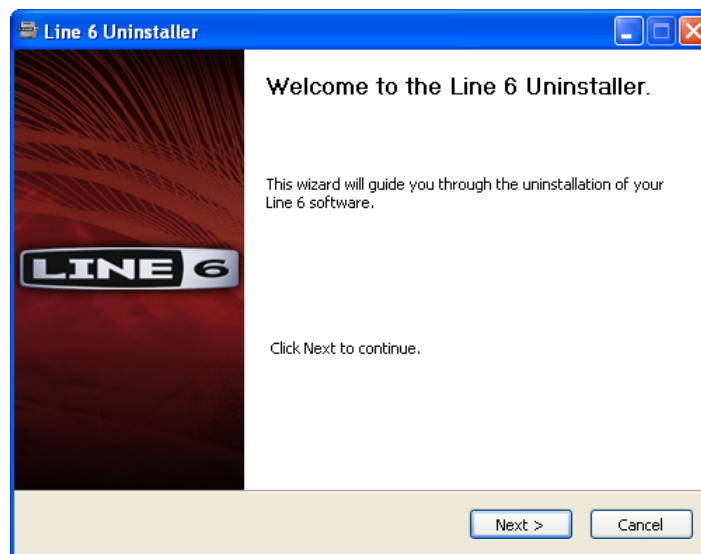


## Uninstalling POD Farm and Other Components

The POD Farm installation also added the Line 6 Uninstaller utility on your system. You can find it by going to the Windows® Start button > Programs > Line 6, or in the Add/Remove Programs utility within the Windows® Control Panel. The Line 6 Uninstaller allows you to individually select to remove all, or any of the POD Farm components individually. The process is the same for Windows® XP® or Vista®. Be sure to exit POD Farm and all other applications first, unplug your Line 6 USB or iLok hardware, then launch the Uninstaller and follow these steps.

### Welcome

The first screen welcomes you politely - click **Next** to continue, or **Cancel** if you've changed your mind and decided you cannot live without all of this cool Line 6 stuff.



### Disconnect Your Hardware

Yes, we'll remind you again - please unplug the USB cable from your Line 6 hardware now.

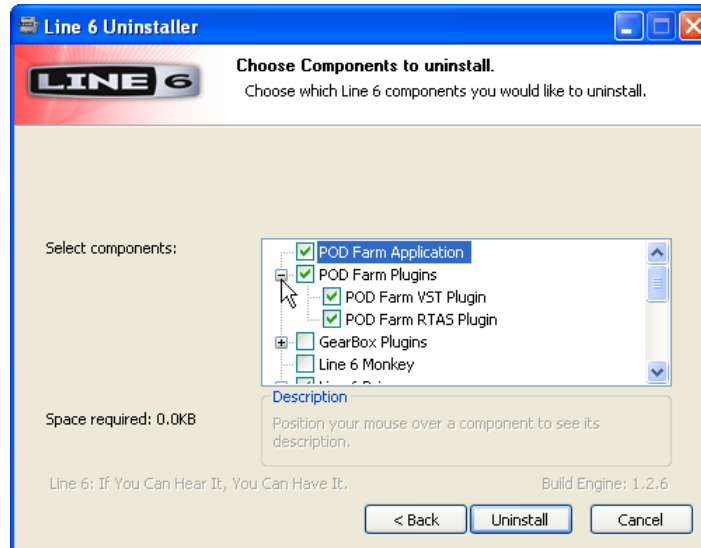






## Choose Components to Uninstall

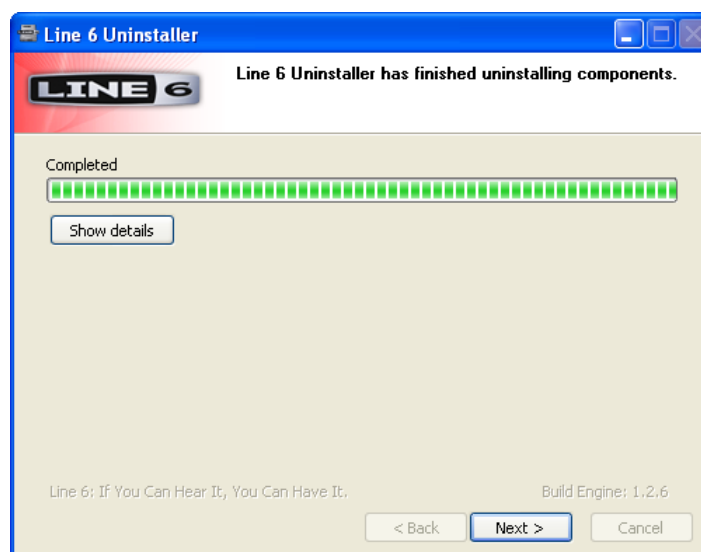
Here you can check any individual items you want to remove - POD Farm application, POD Farm Plug-In, Drivers or Line 6 Monkey. If you have the Line 6 GearBox software on your system, you'll see there is an option to remove it too.



Note that the POD Farm Standalone application and GearBox applications, as well as any audio software on your computer, will require that a Line 6 Audio Device Driver is installed for them to work, so you probably don't want to remove the Driver for your device unless you plan on reinstalling it. Line 6 Monkey is unchecked by default. It is usually a good idea to keep Monkey hanging around since he'll still be able to show you what Line 6 items are available for your system, and guide you through downloads and installations. See the following [Line 6 Monkey](#) chapter. Once you've selected the desired components, click **Uninstall**.

## Uninstall

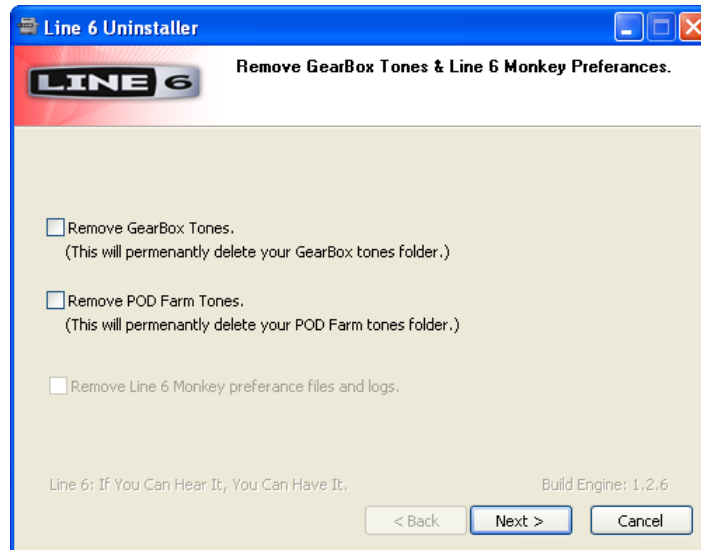
The uninstallation process will now run its course. Click **Next** once it has completed.





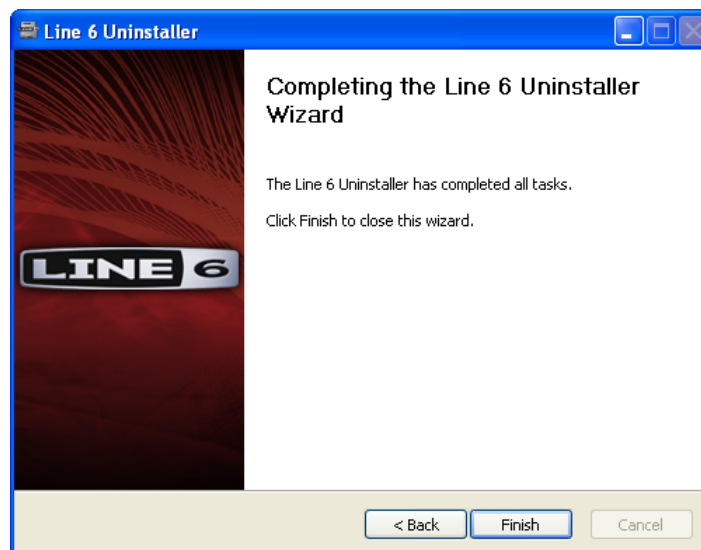
### Choose to Keep or Remove Tone Presets

This screen offers you the option to delete your GearBox and/or POD Farm Tone presets completely from your computer. These are unchecked by default. You probably do NOT want to remove your Tone presets unless you are having some problem and really want them removed, and they'll be gone forever if you check the box! Make your choices carefully and click **Next**.



### Done!

This completes the process and the selected components are now removed from your system. Click finish to close the dialog.





# LINE 6 MONKEY & ADDITIONAL RESOURCES

Line 6 Monkey is the intelligent updater utility automatically installed with your POD Farm application. It is highly recommended that you run Line 6 Monkey at the end of your POD Farm installation, and to do so often to be sure you have all the latest updates for all your Line 6 software and hardware products. Registering your Line 6 hardware is also very important because it ensures that you're dialed in for warranty service and makes it possible for us to contact you if new software versions or other cool enhancements are offered - cutting edge technology and such! So don't put this off any longer. Connect your Line 6 hardware to your computer and follow these steps to launch Line 6 Monkey...

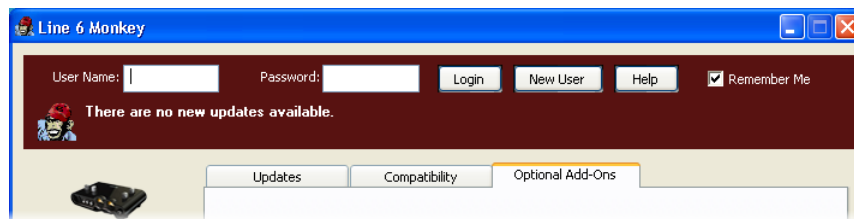
- On Mac®, go to Applications - Line 6.
- On Windows®, go to the Start button menu - Programs - Line 6 - Tools.

iLok Users... You can run Line 6 Monkey to check for POD Farm Plug-In and Add-On updates, but for updates and management of your iLok licenses, you'll want to go to the [iLok.com](http://iLok.com) site.

## Login Account

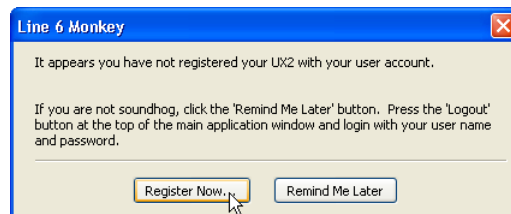
You'll need to Login so that Line 6 Monkey can communicate with the online Line 6 Server and provide you with exactly what you need. It's just a few clicks, and it's free!

- If you have a Line 6 account, then type in your User Name and Password at the top of the Monkey dialog.
- If you have not yet created an account, click the New User button and you'll be walked right through the steps.



## Register Your Hardware

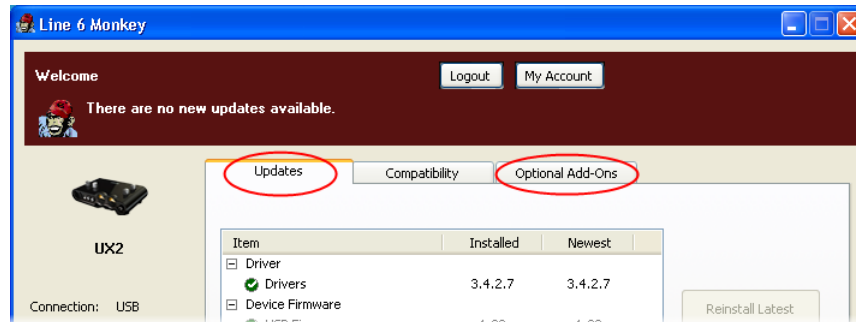
If you have not already done so, you'll be prompted to Register your connected Line 6 hardware. It's a painless process really, so click that Register Now button and fill in the blanks on the Web page. This page will list all your registered Line 6 gear in one place.





## Grab Those Updates

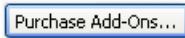
Go to the **Updates** tab in Line 6 Monkey. If you see any items where a newer, updated version is available, then you should click on that item and let the little monkey fellow walk you through the installation steps. This is the easiest way to stay current on the latest POD Farm software updates, as well as drivers and firmware updates. You can check the **Optional Add-Ons\*** tab to see what other goodies might be available for your specific Line 6 device too.



\*Note - Some Line 6 hardware models already include the POD Farm Plug-In, and/or other Add-Ons for free. You'll need to "activate" these items by running Line 6 Monkey - see the following section.

## Purchasing POD Farm Plug-In

POD Farm Plug-In is already included with the new POD Studio hardware. But if you own a Line 6 TonePort, GuitarPort, POD X3 or PODxt device, then you can purchase the POD Farm Plug-In as an Add-On. Just click on the **Optional Add-Ons** tab in Line 6 Monkey, select **POD Farm Plug-In**, then click on **Purchase Add-Ons**.



You will be taken to the **Line 6 Store**, where you can purchase a license for the Plug-In. Follow the instructions on the resulting page to receive your **activation key**. Or, just head on over to the [Line 6 site](#) any time and see what is "in Store" for you.

## POD Farm Plug-In for iLok

Now you can purchase a license for POD Farm Plug-In specifically to add to your iLok USB key! For info and purchasing, please visit the Line 6 Online Store and select iLok.

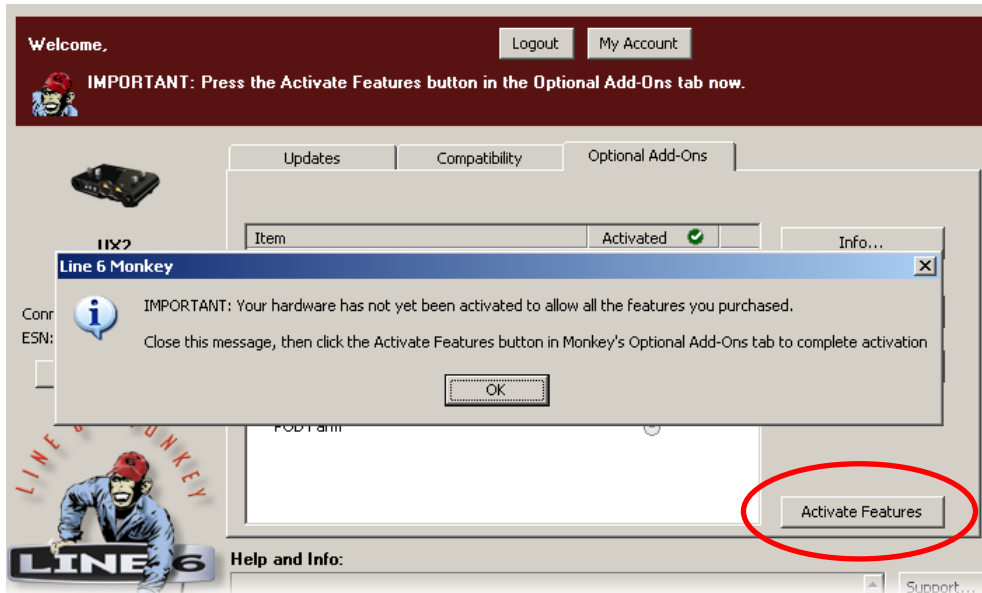
## Product Activation & Authorization

iLok Users... You do not need to use Line 6 Monkey for the process of obtaining the POD Farm Plug-In license and adding it to your iLok USB key. For instructions on this process, you can download the *POD Farm User Guide* from the [POD Farm Online Help](#) site.

Some features of POD Farm and your Line 6 hardware require "Activation" using Line 6 Monkey and a live Internet connection. As mentioned above, POD Studio and some other Line 6 devices include

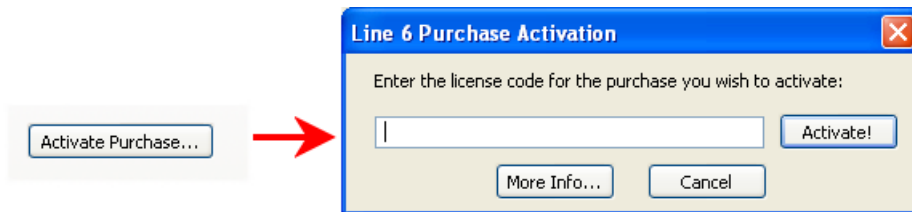


one or more Add-Ons already “installed” on the hardware device itself. When you connect your Line 6 device and launch Line 6 Monkey for the first time, if you are prompted to press the “Activate Features” button, then go ahead and do so to activate the included Add-On(s).



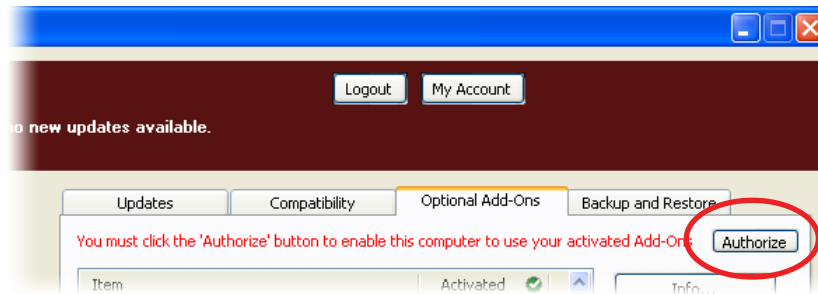
If you’ve purchased additional Add-Ons from the [Line 6 Online Store](#) - these also need to be activated. You will have received a License Key for each Add-On purchase. To activate purchased Add-ons, launch Line 6 Monkey, go to the Optional Add-Ons tab, and then follow these steps...

- You can find all Add-On license keys you’ve purchased by logging into the [Line 6 - My Account](#) online page, and looking in the License Keys page.
- Copy the numerical License key code that appears on this page.
- Go back to the Line 6 Monkey screen and click on the **Activate Purchase** button. A window will pop up, prompting you to enter the activation key you just received.



- Activation turns the Add-On features “on” in your POD Farm-compatible hardware, so they can operate in the POD Farm stand-alone application and/or POD Farm Plug-in.

When using your Line 6 USB hardware on a new computer for the first time, you may also see the following message at the top of the Add-Ons tab - just click the **Authorize** button to finish configuring your computer to use your new hardware and Add-Ons.



Just remember that for POD Farm Plug-in operation, your Line 6 hardware must always be connected via USB (even if you're using a 3rd-party interface). You don't necessarily need to be using your Line 6 hardware as your active USB audio device - it just needs to be USB-connected (and powered on for units that have a power switch).

### Additional Resources

Hungry for more info? We've got plenty of helpful resources just a click away...

- Several additional Help documents covering the latest POD Farm news and support info, product Release Notes and more are available here:

[POD Farm Online Help](#)

- For technical support, choose from the many options listed on the Line 6 Support, including the searchable Knowledgebase:

[Line 6 Support](#)

- Can't get enough of that Line 6 Gear, or want to check out the latest Add-Ons and accessories? Head on over to the Line 6 Store!

[Line 6 Online Store](#)

- Join the Club! Registered Line 6 users are welcome join the All Access club, the place to get:

- Free iTunes® and MP3 Jam Tracks.
- Free loops for GarageBand®, Acid®, Reason® and more.
- Free guitar lessons from LA session pros.
- Free chord and scale practice tools.
- Stay informed of contest and special offers.
- Access to discussion forums, software updates and more.

[All Access Club](#)

