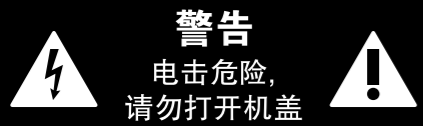



**快速启动向导** (登陆公司网站 [behringer.com](http://behringer.com) 查看完整说明书)





## VIRTUALIZER 3D FX2000


High-Performance 3D Multi-Engine Effects Processor





 带有此标志的终端设备具有强大的电流, 存在触电危险。仅限使用带有 ¼" TS 或扭锁式插头的高品质专业扬声器线。所有的安装或调整均须由合格的专业人员进行。

 此标志提醒您, 产品内存在未绝缘的危险电压, 有触电危险。

 此标志提醒您查阅所附的重要的使用及维修说明。请阅读有关手册。

 **小心**  
为避免触电危险, 请勿打开机顶盖 (或背面挡板)。设备内没有可供用户维修使用的部件。请将维修事项交由合格的专业人员进行。

 **小心**  
为避免着火或触电危险, 请勿将此设备置于雨淋或潮湿中。此设备也不可受液体滴溅, 盛有液体的容器也不可置于其上, 如花瓶等。

 **小心**  
维修说明仅是给合格的专业维修人员使用的。为避免触电危险, 除了使用说明提到的以外, 请勿进行任何其它维修。所有维修均须由合格的专业人员进行。

1. 请阅读这些说明。
2. 请妥善保存这些说明。
3. 请注意所有的警示。
4. 请遵守所有的说明。
5. 请勿在靠近水的地方使用本产品。
6. 请用干布清洁本产品。
7. 请勿堵塞通风口。安装本产品时请遵照厂家的说明。
8. 请勿将本产品安装在热源附近, 如暖气片、炉子或其它产生热量的设备 (包括功放器)。
9. 请勿移除极性插头或接地插头的安全装置。接地插头是由两个插塞接点及一个接地头构成。若随货提供的插头不适合您的插座, 请找电工更换一个合适的插座。
10. 妥善保护电源线, 使其不被践踏或刺破, 尤其注意电源插头、多用途插座及设备连接处。

11. 请只使用厂家指定的附属设备和配件。



12. 请只使用厂家指定的或随货销售的手推车、架子、三角架、支架和桌子。若使用手推车来搬运设备, 请注意安全放置设备, 以避免手推车和设备

倾倒是受伤。

13. 遇闪电雷鸣或长期不使用本设备时, 请拔出电源插头。

14. 所有维修均须由合格的维修人员进行。设备受损时需进行维修, 例如电源线或电源插头受损, 液体流入或异物落入设备内, 设备遭雨淋或受潮, 设备不能正常运作或被摔坏。

15. 本设备连接电源时一定要接地保护。



16. 若电源插头或器具耦合器用作断电装置, 应当保证它们处于随时可方便操作状态。

### 保修条款

有关音乐集团保修的适用条款及其它相关信息, 请登陆 [www.music-group.com/warranty](http://www.music-group.com/warranty) 网站查看完整的详细信息。

### 法律声明

技术数据和外观如有变更, 恕不另行通知, 且准确性与实际产品可能有细微差异。BEHRINGER 是 MUSIC GROUP (MUSIC-GROUP.COM) 的旗下品牌。所有的商标均归各自所有人所有。MUSIC GROUP 对任何人因使用本手册包含的全部或部分描述、图片或陈述而遭受的任何损失不承担责任。颜色及规格可能与产品略有差异。MUSIC GROUP 产品只通过授权销售商进行销售。销售商不是 MUSIC GROUP 的代表, 无权以明确或隐含的理解或表示约束 MUSIC GROUP。本手册具有版权。未经 MUSIC GROUP IP LTD. 的书面同意, 本手册的任何部分均不得为了任何目的, 以任何形式或任何方式进行重新制作或转载, 其中包括复制或录制。

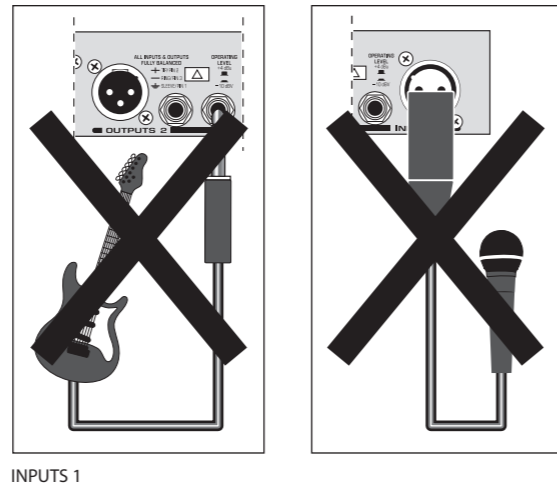
版权所有, 侵权必究。

© 2012 MUSIC Group IP Ltd.

Trident Chambers, Wickhams Cay, P.O. Box 146,  
Road Town, Tortola, British Virgin Islands

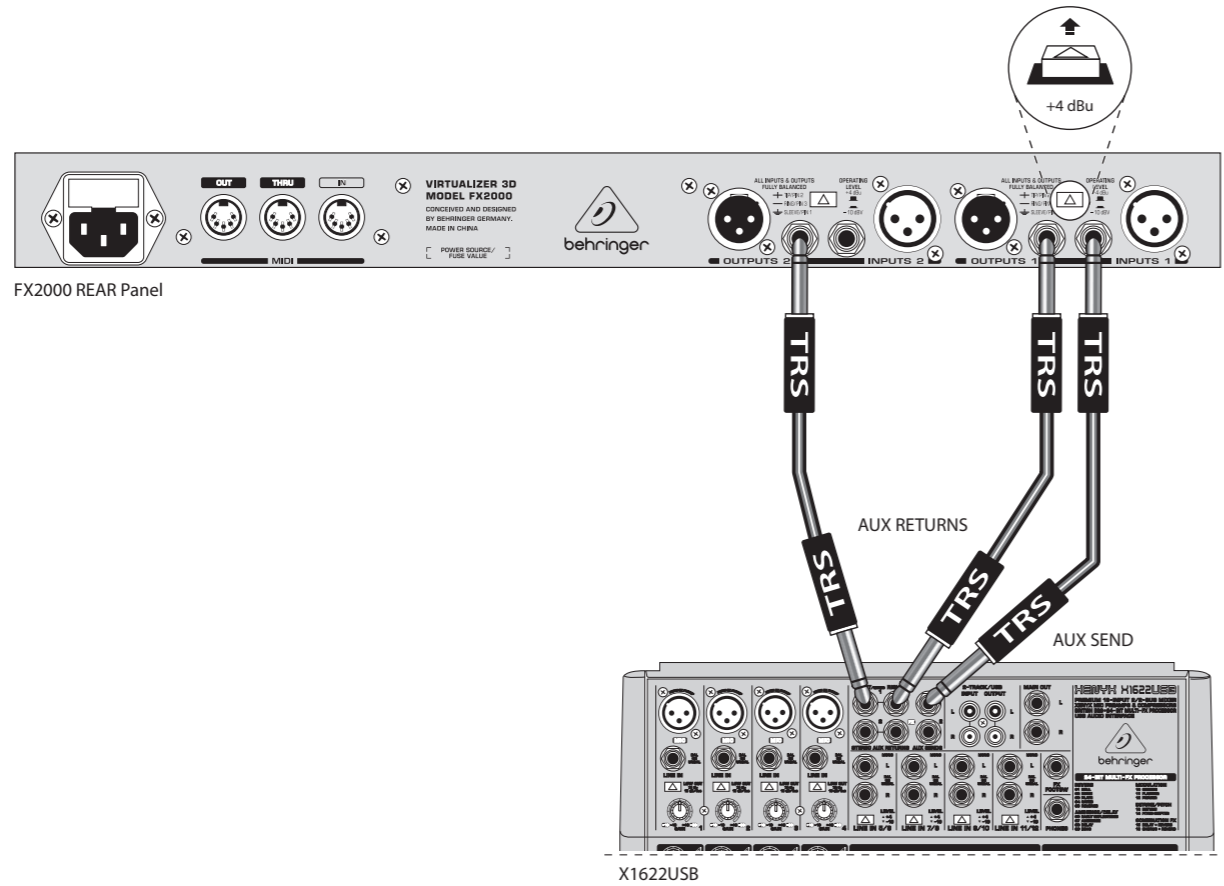
# VIRTUALIZER 3D FX2000 连接应用

## 第一步: 连接应用



INPUTS 1

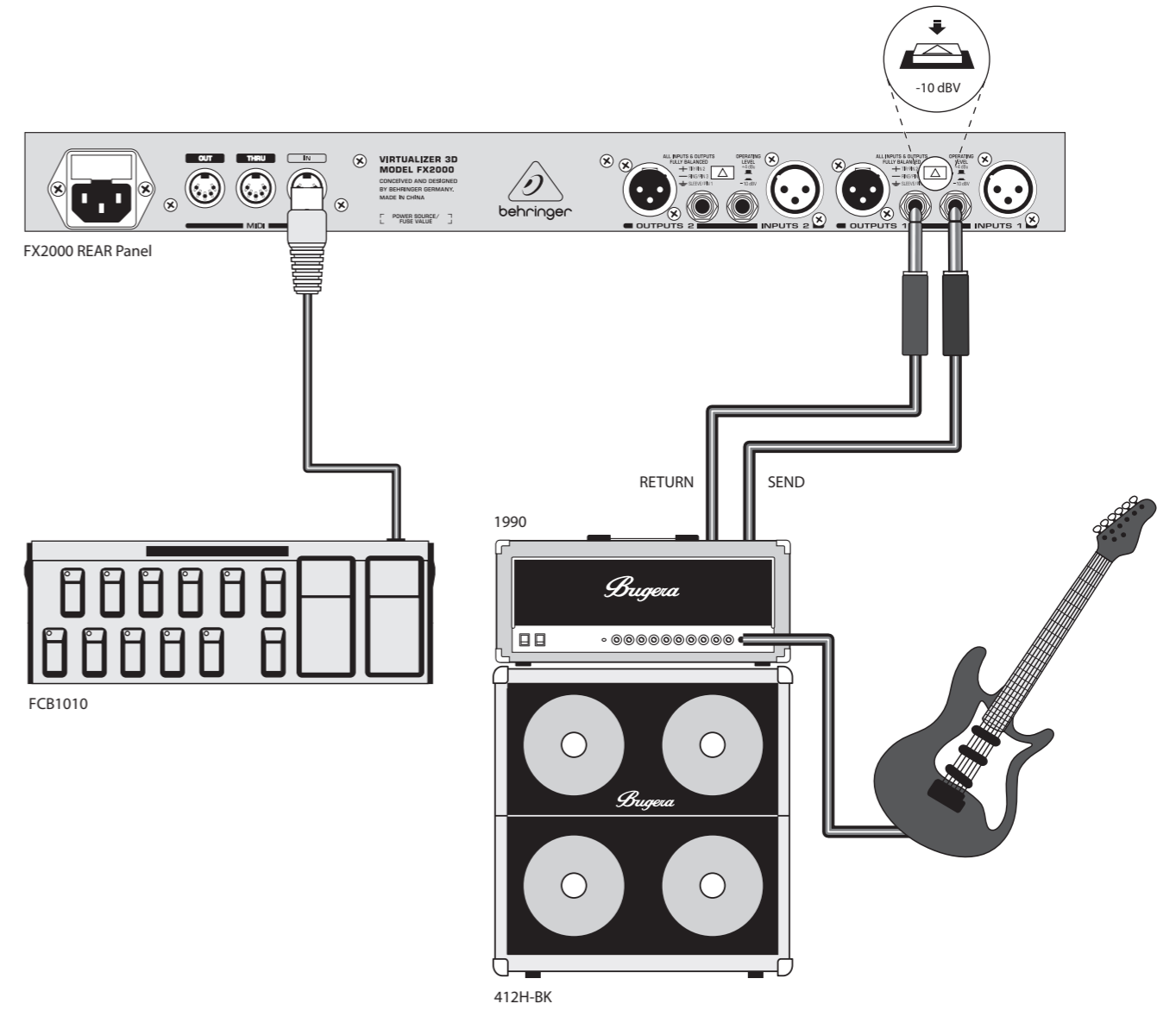
与调音台一起做外部效果处理



FX2000 REAR Panel

X1622USB

FX2000 用于吉他功放效果回路中



FX2000 REAR Panel

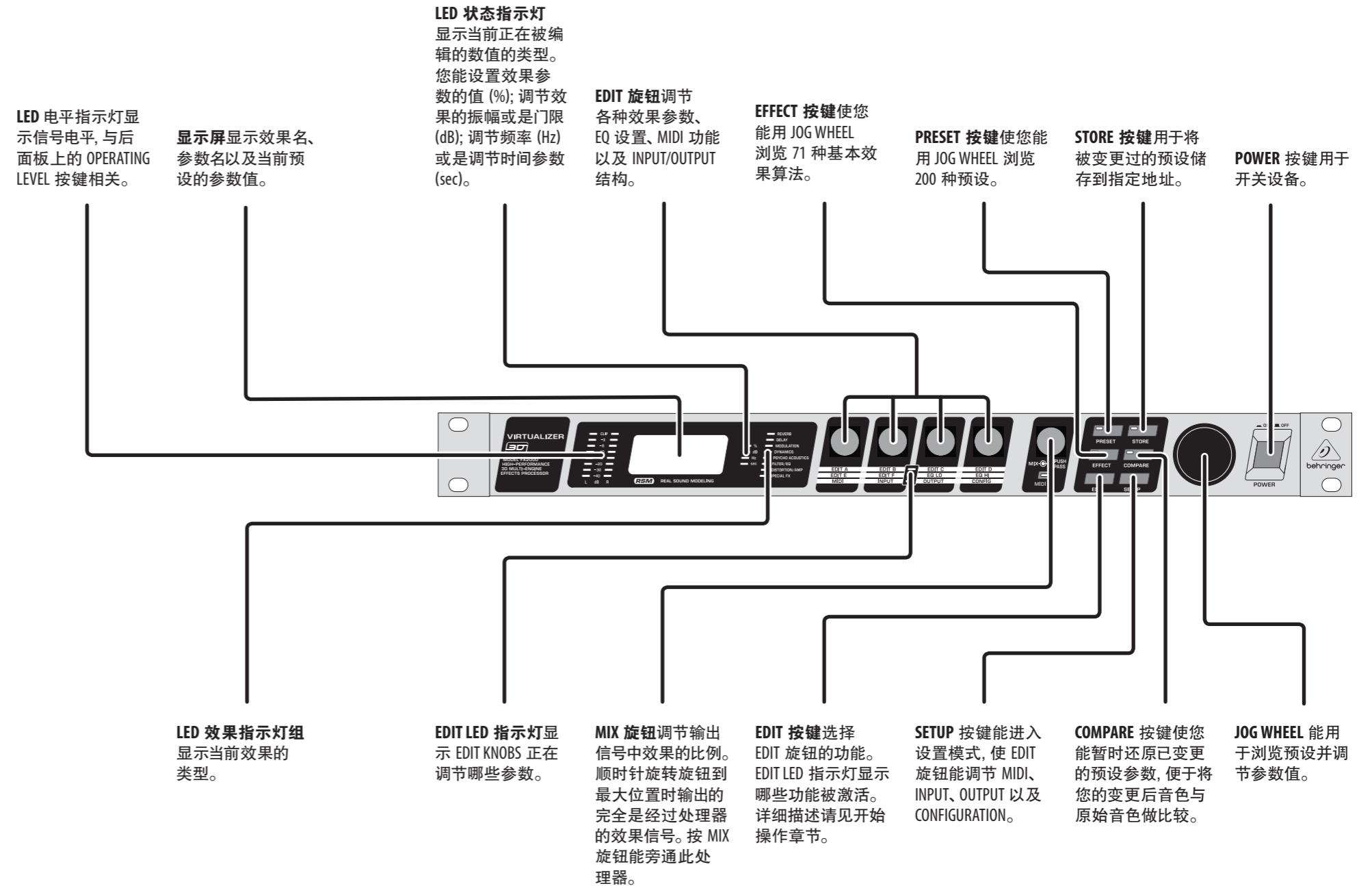
FCB1010

1990

412H-BK

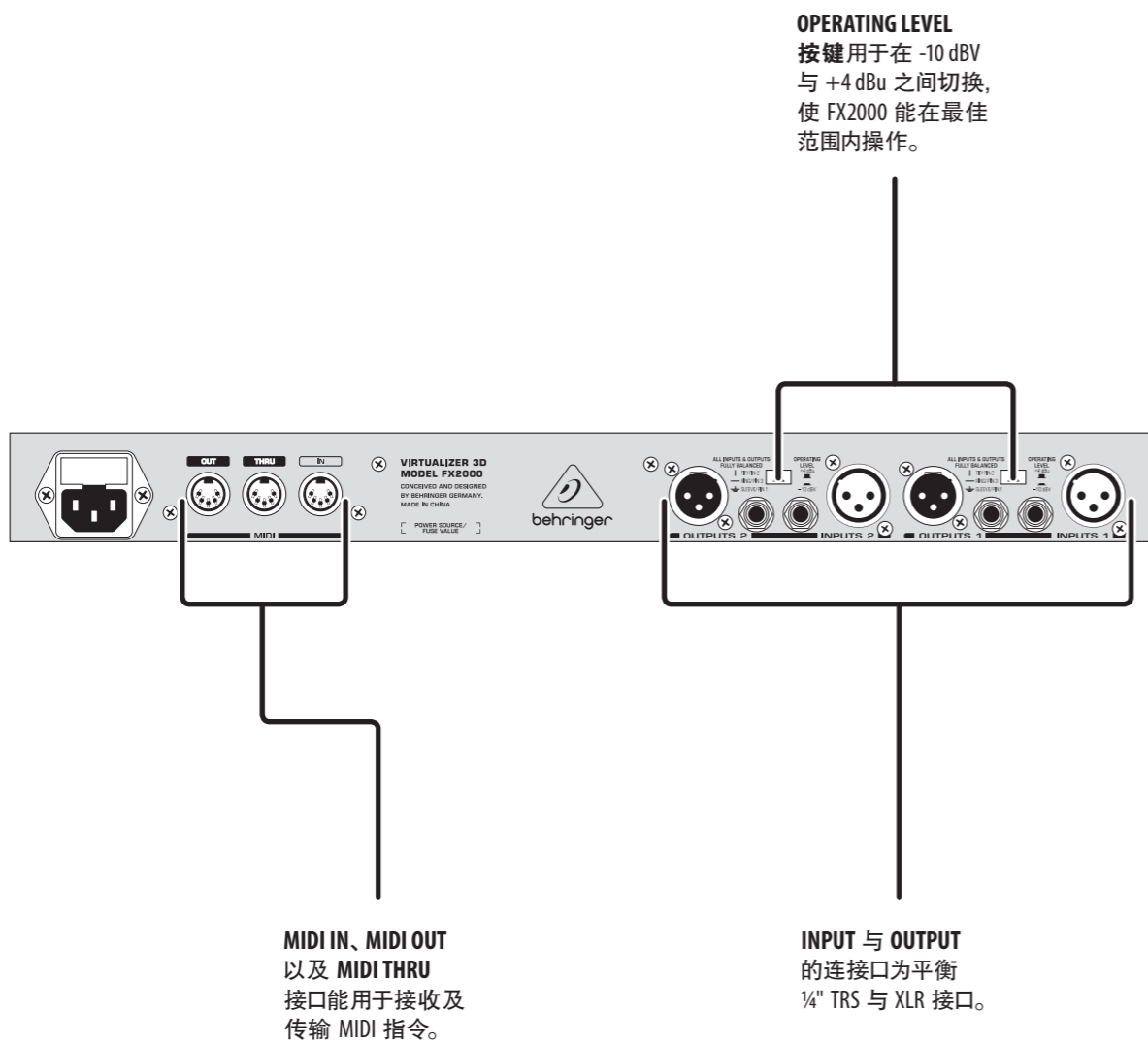
# VIRTUALIZER 3D FX2000 控制

## 第二步: 控制



# VIRTUALIZER 3D FX2000 控制

## 第二步: 控制

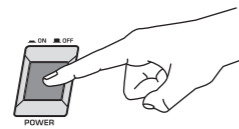


# VIRTUALIZER 3D FX2000 使用

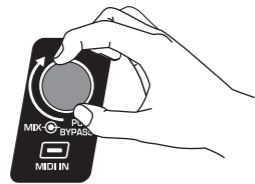
## 第三步: 使用

**1** 为 FX2000 做好所有音频、MIDI 以及电源连接。请保持所有设备的电源关闭。

**2** 开启 FX2000, 再开启其他设备。

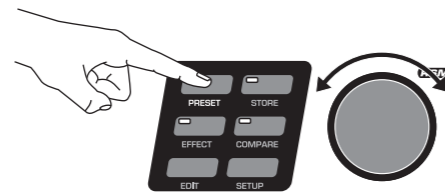


**3** 旋动 MIX 旋钮, 从而调节输出信号的干湿比或效果强度。如果将此处理器与调音台同时使用时, 请将 MIX 旋钮设置在顺时针最大位置。

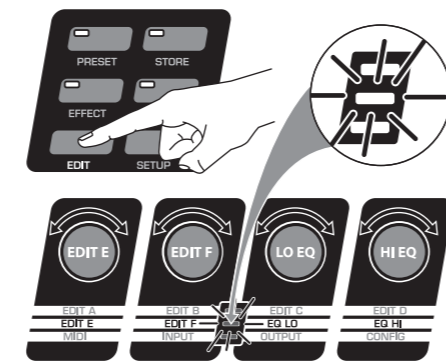
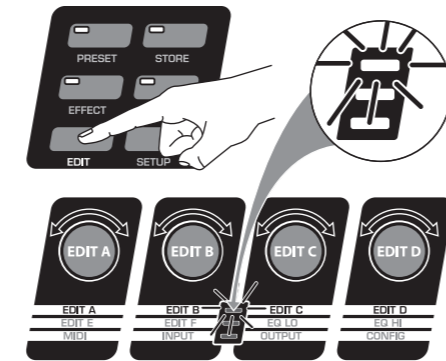


**4** 如有必要, 请调节您的功放或是调音台上的 Send 与 Return 电平。请确保前面板上的 LED 电平指示灯没有达到红色 CLIP LED。

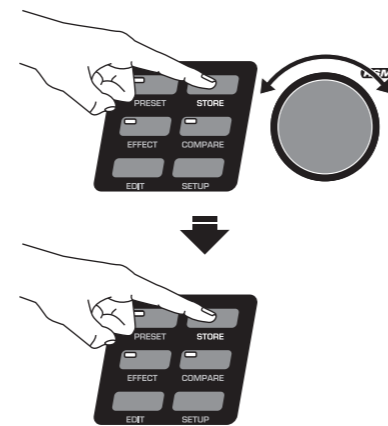
**5** 要选取一个预设, 按 PRESET 按键, 然后旋转 JOG WHEEL 来在已有预设之间选择。



**6** 要编辑预设, 按 EDIT 按键, 然后旋转 EDIT 旋钮来调节参数 A-D。再次按 EDIT 按键就能调节参数 E 与 F 以及 LO 与 HI EQ。



**7** 要保存已经变化的预设, 按 STORE 按键。旋转 JOG WHEEL 来选择用户预设地址, 然后再按 STORE 按键确认。



**8** 请登录 [behringer.com](http://behringer.com) 下载包含 FX2000 详细功能介绍的完整手册。

# VIRTUALIZER 3D FX2000 预设表

## 内置预设 (工厂设置)

No.	EFFECT	No.	EFFECT	No.	EFFECT	No.	EFFECT
I.001	CATHEDRAL OF COLOGNE	I.026	MEDIUM DELAY	I.051	PANNING	I.076	HEAVY METAL
I.002	CONCERT CATHEDRAL	I.027	OLD TAPE	I.052	COMPRESSOR	I.077	FUZZ BOX
I.003	BIG PLATE	I.028	BIG TAPE	I.053	EXPANDER	I.078	RADIO SPEAKER
I.004	DARK PLATE	I.029	PING PONG	I.054	GATE	I.079	BAD SPEAKER
I.005	SMALL CHAMBER	I.030	CHAOS	I.055	ANALOG COMPR./LIMITER	I.080	ROBOTIZER
I.006	DRUM CLOSET	I.031	STEREO CHORUS	I.056	ULTRAMIZER	I.081	AM-RADIO
I.007	BRIGHT ROOM	I.032	ANALOG CHORUS	I.057	DENOISER	I.082	OLD RECORD PLAYER
I.008	AMBIENT ROOM	I.033	VINTAGE CHORUS	I.058	DE-ESSER	I.083	VINTAGE TAPE
I.009	LARGE HALL	I.034	ULTRA CHORUS	I.059	WAVE DESIGNER	I.084	SAMPLER
I.010	CONCERT HALL	I.035	STEREO FLANGER	I.060	EXCITER	I.085	VOCODER
I.011	LIVE STUDIO	I.036	VINTAGE FLANGER	I.061	ULTRAFEX	I.086	VOICE CANCELER
I.012	DRY STUDIO	I.037	JET STREAM FLANGER	I.062	ULTRABASS	I.087	RESONATOR
I.013	ARENA	I.038	STEREO PHASER	I.063	SUBBASS	I.088	CHORUS & REVERB 1
I.014	GARAGE	I.039	RETRO PHASER	I.064	STEREO IMAGER	I.089	CHORUS & REVERB 2
I.015	GUITAR AMP SPRING	I.040	WILD PHASER	I.065	ULTRA WIDE	I.090	FLANGER & REVERB 1
I.016	STUDIO SPRING	I.041	VINTAGE PHASER	I.066	HEADPHONE EXTENDER	I.091	FLANGER & REVERB 2
I.017	BIG DRUMS	I.042	DUAL PHASER	I.067	SPEAKER EXTENDER	I.092	LESLIE & REVERB
I.018	NICE AMBIENCE	I.043	ROTARY SPEAKER	I.068	AUTO FILTER	I.093	PITCH & REVERB
I.019	REFLECTING ROOM	I.044	B3 LESLIE	I.069	LFO FILTER	I.094	DELAY & REVERB
I.020	VOICE WIDENER	I.045	STEREO PITCH SHIFTER	I.070	PARAMETRIC EQ	I.095	TREMOLO & REVERB
I.021	BASS DRUM EXTENDER	I.046	MAJOR 7	I.071	GRAPHIC EQ	I.096	PHASER & REVERB
I.022	PHIL'S DRUMS	I.047	IT'S JAZZ	I.072	VOCAL SPEAKER	I.097	CHORUS & DELAY
I.023	SHORT REVERSE	I.048	REAL CHORUS!	I.073	TUBE AMP	I.098	FLANGER & DELAY
I.024	MEDIUM REVERSE	I.049	VIBRATO	I.074	CRUNCH	I.099	PITCH & DELAY
I.025	SHORT DELAY	I.050	TREMOLO	I.075	BLUES	I.100	TREMOLO & DELAY

## 用户预设 (工厂设置)

No.	EFFECT	No.	EFFECT	No.	EFFECT	No.	EFFECT
U.001	DYNA CHORUS	U.026	UNDER THE BRIDGE	U.051	SOFT WAH WAH	U.076	DISTORTION
U.002	METALLIC FLANGER	U.027	BASS EQ	U.052	SOFT CHORUS REVERSE	U.077	ROBOT
U.003	GATED AMBIENCE	U.028	BLUE'S GROOVE	U.053	FAT GUITAR	U.078	ULTRAMAXXX
U.004	CHORUS ROOM	U.029	SPACE FLANGER	U.054	4 SPACE FX	U.079	PHIL'S SNARE
U.005	TAPE ECHO & ROOM	U.030	GOLD VERB	U.055	FATTY	U.080	WIDE
U.006	QUART ROOM	U.031	80S DIGITAL	U.056	SPACER	U.081	AMBIENCE
U.007	CRAZY MUSIC BOX	U.032	ARPEGGIATOR VCF	U.057	SYNTH HEAVEN	U.082	PLATEAU
U.008	OLD GRAMOPHONE	U.033	VALVE PREAMP	U.058	JEAN GLITTER	U.083	EMPTY LIVING ROOM
U.009	CRUNCH BOX	U.034	NEAR FIELD WIDE!	U.059	SOFT TUBE	U.084	ECHO PLAY
U.010	AUTO WAH	U.035	PING PONG PAN	U.060	DRUMZZZ	U.085	STAGE
U.011	FILTER GROOVE	U.036	SUBWOOFER ROOM	U.061	PERC COMPRESSION	U.086	BIG CATHEDRAL
U.012	SPACE RADIO	U.037	MODULIZZ	U.062	INDUSTRIALIZER	U.087	ETERNITY
U.013	BUBBLE DRUMS	U.038	RECORDING STUDIO	U.063	STRANGE GLIDE 140	U.088	NICE HALL
U.014	BRICK WALL	U.039	FLANGERUS	U.064	SQUARE AT 140	U.089	REVERSE TREMOLO
U.015	ARPEGGIATOR	U.040	CHEAP SPRING	U.065	SQUARE BREATH 140	U.090	REVERSE
U.016	STACCATO	U.041	BRITISH SOLO	U.066	PITCH CHORUS	U.091	VOCAL CHORUS
U.017	THE VOICE	U.042	JAZZ CLUB	U.067	CHORUS 2	U.092	SMOOTH VOCAL FX
U.018	PSEUDO STEREO	U.043	SMALL SPEAKER	U.068	SOFT METALLIZER	U.093	FATTY VOICE CHORUS
U.019	ROOM PHASER	U.044	AUDIOTORIUM	U.069	PHASER	U.094	VOICE EQ
U.020	COMPUTER GAME	U.045	DE-NOIZ	U.070	FLANGER IN BACKGROUND	U.095	PHONE VOICE
U.021	THE FINAL MIX	U.046	MINOR 7	U.071	HARD FLANGER	U.096	VOICE COMPRESSOR
U.022	BASS CHORUS	U.047	BALLAD TREMOLO	U.072	SOFT FLANGER	U.097	EMPTY ARENA (VOICE)
U.023	LIVE ROOM	U.048	TRANCE	U.073	DELAY 137 16TH	U.098	PANOMOLO
U.024	IN THE CLOSET	U.049	DISCO SOUND	U.074	VINTAGE PICKING	U.099	DISTORTED VOCAL
U.025	SYMPHONIC	U.050	DUO REVERBRO	U.075	DELAY STEREO 137	U.100	MOUNTAIN ECHOES

# VIRTUALIZER 3D FX2000 预设表

## 效果算法与参数

	Name	Edit A	Edit B	Edit C	Edit D	Edit E	Edit F	Mix
<b>Reverbs</b>								
1	Cathedral	Pre-Delay	Decay	Hi Dec. Damping	ER / Rev. Bal.	Low Cut	Rev. Mod.	Mix
2	Gold Plate	Pre-Delay	Decay	Hi Dec. Damping	Low Cut	Shv. Damping	Diffusion	Mix
3	Small Hall	Pre-Delay	Decay	Hi Dec. Damping	Size	Shv. Damping	Low Cut	Mix
4	Room	Pre-Delay	Decay	Hi Dec. Damping	Size	Shv. Damping	Diffusion	Mix
5	Concert	Pre-Delay	Decay	Hi Dec. Damping	Bass Mul.	Shv. Damping	Rev. Mod.	Mix
6	Studio	Pre-Delay	Decay	Hi Dec. Damping	Spread	Shv. Damping	Diffusion	Mix
7	Stage	Pre-Delay	Decay	Hi Dec. Damping	Size	Shv. Damping	ER / Rev. Bal.	Mix
8	Spring Reverb	Pre-Delay	Decay	Hi Dec. Damping	Metal Reso.	Hi Cut	Diffusion	Mix
9	Ambience	Pre-Delay	Decay	Hi Dec. Damping	Size	Low Cut	Diffusion	Mix
10	Early Reflections	Pre-Delay	Size	Wall Damping	Reflections	Stereo Width	Diffusion	Mix
11	Gated Reverb	Pre-Delay	Decay	Hi Dec. Damping	Density	Low Cut	Diffusion	Mix
12	Reverse Reverb	Pre-Delay	Decay	Hi Dec. Damping	Density	Low Cut	Diffusion	Mix
<b>Delay</b>								
13	Stereo Delay	Delay Left Coarse	Delay Left Fine	Delay Right Coarse	Delay Right Fine	Feedback Left	Feedback Right	Mix
14	Tape Echo	Delay Left	Delay Right	Feedback	Damping	Feedback HP	Feedback LP	Mix
15	Ping Pong	Delay Left	Delay Right	Feedback Left	Feedback Right	Feed. Delay L	Feed. Delay R	Mix
<b>Modulation</b>								
16	Stereo Chorus	Speed	Depth	Delay	Stereo Phase	LFO Wave	Damping	Mix
17	Analog Chorus	Speed	Depth	Delay	Stereo Spread	—	—	Mix
18	Vintage Chorus	Speed	Depth	Delay	Damping	—	—	Mix
19	Ultra Chorus	Speed	Depth	Delay	Wideness	Stereo Spread	Damping	Mix
20	Stereo Flanger	Speed	Depth	Feedback	Delay	Stereo Phase	Feedback LP	Mix
21	Vintage Flanger	Speed	Depth	Feedback	Delay	—	—	Mix
22	Jet Stream Flanger	Speed	Depth	Feedback	Delay	—	—	Mix
23	Stereo Phaser	Speed	Depth	Feedback	Stereo Phase	Mode	—	Mix
24	Vintage Phaser	Speed	Depth	Feedback	Base	—	—	Mix
25	Dual Phaser	Speed	Depth	Feedback	Base	—	—	Mix
26	Leslie	Speed	Drum Depth	Horn Depth	Drive	Balance	—	Mix
27	Pitch Shifter	Semitones 1	Cents 1	Semitones 2	Cents 2	Semitones 3	Cents 3	Mix
28	Vibrato	Speed	Depth	Wave	Auto Mod.	—	—	Mix
29	Tremolo	Speed	Depth	Wave	Auto Mod.	—	—	Mix
30	Auto Panning	Speed	Depth	Wave	Auto Mod.	—	—	Mix
<b>Dynamics</b>								
31	Compressor	Ratio	Threshold	Makeup-Gain	Soft Knee	Attack	Release	Mix
32	Expander	Ratio	Threshold	Makeup-Gain	SoftKnee	Attack	Release	Mix
33	Gate	Hold	Threshold	Attack	Release	Range	—	Mix
34	Analog Compr./Lim.	Ratio	Threshold	Makeup-Gain	Limiter Thresh.	Attack	Release	Mix
35	Ultramizer	Density	Range	Speed	Split Frequency	Stereo FX	Enhancer Freq.	Band
36	Denoyer	LP-Frequency	LP-Depth	LP-Speed	Gate Threshold	Gate Hold	Gate Resp.	Mix
37	De-Esser	Ratio	Threshold	Makeup-Gain	Frequency	Attack	Release	Band
38	Wave Designer	Attack Left	Release Left	Attack Right	Release Right	Gain Left	Gain Right	Mix
<b>Psycho Acoustic</b>								
39	Exciter	Frequency	Filter-Q	Harmonics	Timbre	Harmon. Kick	—	Mix
40	Enhancer	High Freq	High Gain	Bass Width	Bass Gain	Mid Q	Mid Gain	Gain
41	Ultra Bass	Subbass Freq.	Subbass Level	Harmon. Freq.	Harmon. Level	Harm. Density	Bass Gain	Mix
42	Stereo Imager	Spread	MS-Balance	Spread Mode	Gain	Stereo Bal.	Mono Balance	Mix
43	Ultra Wide	Center	Spread	X-Over Freq.	Gain	—	—	Mix
44	Binauralizer	Center	Space	Mode	Gain	Spk. Distance	Spk.Compens.	Mix

	Name	Edit A	Edit B	Edit C	Edit D	Edit E	Edit F	Mix
<b>Filter/EQ</b>								
45	Auto Filter	Base Freq.	Depth	Type	Resonance	Attack	Release	Mix
46	LFO Filter	Base Freq.	Depth	Type	Resonance	Speed	Wave	Mix
47	Parametric EQ	Gain 1	Freq. 1	Q 1	Gain 2	Freq. 2	Q 2	Gain
48	Graphic EQ	200 Hz	400 Hz	800 Hz	1.6 kHz	3.2 kHz	6.4 kHz	Gain
<b>Distortion/Amp Simulation</b>								
49	Vocal Distortion	Distortion	Delay Gain	Delay	Flanger Level	Type	Flanger Speed	Mix
50	Tube Distortion	Drive	Pre HP	Pre LP	Damp	Tube Select	Mid EQ	Mix
51	Guitar Amp	In Gain	Drive	Presence	Gain	Cabinet Type	Mid EQ	Mix
52	Tri Fuzz	In Gain	Low-Fuzz	Mid-Fuzz	Hi-Fuzz	Drive	Hi Damp	Mix
53	Speaker Simulation	Type	EQ-Gain	EQ-Freq.	EQ-Q	—	—	Mix
54	Ring Modulator	Speed	Depth	Carrier Freq.	Tone	Mode	Slewing	Mix
55	LoFi	Bit Resolution	Tone	Buzz Level	Noise Gain	Noise HP	Noise LP	Mix
<b>Special FX</b>								
56	Vinylizer	Speed	Clicks Level	Scratch Level	Noise Level	Tone	Noise Freq.	Mix
57	Sampler	Rec/Stop	Play/Stop	Speed	Mode	Rec Gain	Overdub Gain	Mix
58	Vocoder	Sensitivity	Mode	Attack	Release	Frequency	Resonance	Mix
59	Voice Canceler	Bass Freq.	MS-Balance	Treble Pan	Gain	—	—	Mix
60	Resonator	Speed	Depth	Carrier Freq.	Feedback	Mode	Slewing	Mix
<b>Combination</b>								
61	Chorus & Reverb	Speed	Depth	Delay	Reverb Mix	Decay	Hi Damp	Mix
62	Flanger & Reverb	Speed	Depth	Feedback	Reverb Mix	Decay	Hi Damp	Mix
63	Leslie & Reverb	Speed	Depth	Doppler	Reverb Mix	Decay	Hi Damp	Mix
64	Pitch Shifter & Reverb	Semitones	Cents	High Cut	Reverb Mix	Decay	Hi Damp	Mix
65	Delay & Reverb	Delay	Feedback	Type	Reverb Mix	Decay	Hi Damp	Mix
66	Tremolo & Reverb	Speed	Depth	Auto Mod.	Reverb Mix	Decay	Hi Damp	Mix
67	Phaser & Reverb	Speed	Depth	Feedback	Reverb Mix	Decay	Hi Damp	Mix
68	Chorus & Delay	Speed	Depth	Mod. Delay	Delay Mix	Delay Time	Delay Feedb.	Mix
69	Flanger & Delay	Speed	Depth	Feedback	Delay Mix	Delay Time	Delay Feedb.	Mix
70	Pitch Shifter & Delay	Semitones	Cents	High Cut	Delay Mix	Delay Time	Delay Feedb.	Mix
71	Tremolo & Delay	Speed	Depth	Auto Mod.	Delay Mix	Delay Time	Delay Feedb.	Mix



## CN 技术参数

模拟输入	
接口	XLR 与 ¼" TRS
类型	RF (射频) 过滤, 伺服平衡输入级
阻抗	80 kΩ 平衡
额定输入电平	-10 dBV 或 +4 dBu (可调)
最大输入电平	+15 dBu @ +4 dBu 额定输入电平, +1 dBV @ -10 dBV 额定输入电平
模拟输出	
接口	XLR 与 ¼" TRS
类型	电子伺服平衡输出级
阻抗	80 Ω 平衡
最大输出电平	+15 dBu @ +4 dBu 额定输入电平, +1 dBV @ -10 dBV 额定输入电平
系统参数	
带宽	20 Hz 至 20 kHz, +/- 3 dB
SNR (信噪比)	91 dB, 未加权, 20 Hz 至 20 kHz
THD (总谐波失真)	典型 0.018% @ +4 dBu, 1 kHz, 0 dBu 输入, 增益 1
串音	< -76 dB
MIDI 接口	
类型	5 针 DIN 插座 IN / OUT / THRU
数字处理	
转换器	24-bit Sigma-Delta, 64/128 倍过采样
采样率	46.875 kHz
显示屏	
类型	4 数位 14 段字母数字 LED - 显示屏
电源	
电压	
美国 / 加拿大	120 V~, 60 Hz
欧洲 / 英国/澳大利亚	230 V~, 50 Hz
中国	220 V~, 50/60 Hz
日本	100 V~, 50/60 Hz
一般出口型号	110-120/220-240 V~, 50/60 Hz
保险管	100 - 120 V~: T 200 mA L 250 V 220 - 240 V~: T 100 mA L 250 V
功率消耗	最大 15 瓦.
主电源连接	标准 IEC 插座
物理特点	
尺寸 (H x W x D)	1.75 x 19 x 8.5" / 44.5 x 483 x 217 毫米
净重	约 4.2 磅 / 1.9 千克
毛重	约 7 磅 / 3.2 千克

## 其他的重要信息

### CN 其他的重要信息

- 1. 在线注册。** 请购买 MUSIC Group 产品后立即在 behringer.com 网站注册。网页上有简单的在线注册表格。这有助于我们更快更有效率地处理您维修等事宜。请阅读保修的相关条款及条件。
- 2. 无法正常工作。** 若您的 MUSIC Group 产品无法正常工作, 我们会为您尽快修复。请联系您购买产品的销售商。若你所在地区没有 MUSIC Group 销售商, 请联系 behringer.com 网站的“WHERE TO BUY”一栏下的所列出的子公司或经销商。
- 3. 电源连接。** 将本设备连接电源前, 请确保使用的电压正确。保险丝需要更换时, 必须使用相同型号及定额的保险丝。



We Hear You